

Product datasheet for **MG210618**

Ctnnb1 (BC053065) Mouse Tagged ORF Clone

Product data:

Product Type:	Expression Plasmids
Product Name:	Ctnnb1 (BC053065) Mouse Tagged ORF Clone
Tag:	TurboGFP
Symbol:	Ctnnb1
Synonyms:	Bfc; Catnb; Mesc
Mammalian Cell Selection:	Neomycin
Vector:	pCMV6-AC-GFP (PS100010)
E. coli Selection:	Ampicillin (100 ug/mL)



[View online »](#)

ORF Nucleotide
Sequence:

>MG210618 representing BC053065
Red=Cloning site Blue=ORF Green=Tags(s)

TTTTGTAATACGACTCACTATAGGGCGGCCGGGAATTCGTCGACTGGATCCGGTACCGAGGAGATCTGCC
GCCGCGATCGCC

ATGGCTACTCAAGCTGACCTGATGGAGTTGGACATGGCCATGGAGCCGGACAGAAAAGCTGCTGTACGCC
ACTGGCAGCAGCAGTCTTACTTGGATTCTGGAATCCATTCTGGTGCCACCACCACAGCTCCTTCCCTGAG
TGGCAAGGGCAACCCTGAGGAAGAAGATGTTGACACCTCCAAGTCCTTTATGAATGGGAGCAAGGCTTT
TCCAGTCTTACGCAAGAGCAAGTAGCTGATATTGACGGGCAGTATGCAATGACTAGGGCTCAGAGGG
TCCGAGCTGCCATGTTCCCTGAGACGCTAGATGAGGGCATGCAGATCCCATCCACGCAGTTTGACGCTGC
TCATCCCCTAATGTCCAGCGCTTGGCTGAACCATCACAGATGTTGAAACATGCAGTTGTCAATTTGATT
AACTATCAGGATGACGCGGAACCTGCCACACGTGCAATTCCTGAGCTGACAAAACCTGCTAAACGATGAGG
ACCAGGTGGTAGTTAATAAAGCTGCTGTTATGGTCCATCAGCTTCCAAAAAGGAAGCTTCCAGACATGC
CATCATGCGCTCCCCTCAGATGGTGTCTGCCATTGTACGCACCATGCAGAATACAATGATGTAGAGACA
GCTCGTTGTAAGTCTGGGACTCTGCACAACCTTCTCACCACCGGAGGGCTTGCTGGCCATCTTTAAGT
CTGGTGGCATCCCAGCGCTGGTGAATGCTTGGGTCAACAGTGGATTCTGTACTGTTCTACGCCATCAC
GACACTGCATAATCTCCTGCTCCATCAGGAAGGAGCTAAAATGGCAGTGCGCCTAGCTGGTGGACTGCAG
AAAATGGTTGCTTGGCTCAACAAAAACAACGTGAAATCTTGGCTATTACAACAGACTGCCTCAGATCT
TAGCTTATGGCAATCAAGAGAGCAAGCTCATCATTCTGGCCAGTGGTGGACCCCAAGCCTTAGTAAACAT
AATGAGGACCTACACTTATGAGAAGCTTCTGTGGACCACAAGCAGAGTGTGAAGGTGCTGTCTGTCTGC
TCTAGCAACAAGCCGGCATTGTAGAAGCTGGTGGATGCAGGCACTGGGGCTTCATCTGACAGACCCAA
GTCAGCGACTTGTCAAACCTGCTTTGGACTCTCAGAAACCTTTCAGATGCAGCGACTAAGCAGGAAGG
GATGGAAGGCCTCCTTGGGACTCTAGTGCAGCTTCTGGGTTCCGATGATATAAATGTGGTACCTGTGCA
GCTGGAATTCTCTCTAACCTCACTTGAATAATTACAAAAACAAGATGATGGTGTGCCAAGTGGGTGGCA
TAGAGGCTCTTGTACGCACCGCTCCTTCTGCTGGTACAGGGAAGACATCACTGAGCCTGCCATCTGTGC
TCTTCGTCATCTGACCAGCCGGCATCAGGAAGCCGAGATGGCCAGAATGCCGTTTCGCTTCAATATGGA
CTGCCTGTTGTGGTTAACTCCTGCACCCACCATCCCCTGACCCTCTGATAAAGGCAACTGTTGGATTGA
TTCGAAACCTTGCCTTTGCCAGCAAATCATGCGCTTTCGGGAACAGGGTGTATTCCACGACTAGT
TCAGCTGCTTGTACGAGCACATCAGGACACCAACGGCGCACCTCCATGGGTGGAACGCAGCAGCAGTTT
GTGGAGGGCGTGCATGGAGGAGATAGTAGAAGGTGTACTGGAGCTCTCCACATCCTTGTCTCGGACG
TTCACAACCGGATTGTAATCCGAGGACTCAATACCATTCCATTGTTTGTGCAATGCTTTATTCTCCCAT
TGAAAATATCAAAGAGTAGCTGCAGGGTCTCTGTGAACTTGCTCAGGACAAGGAGGCTGCAGAGGCC
ATTGAAGCTGAGGGAGCCACAGCTCCCCTGACAGAGTACTCCACTCCAGGAATGAAGGCGTGGCAACAT
ACGCAGCTGCTGTCTTATCCGAATGTCTGAGGACAAGCCACAGGATTACAAGAAGCGGCTTTCAGTCGA
GCTGACCAGTTCCCTCTCAGGACAGAGCCAATGGCTTGGAAATGAGACTGCAGATCTTGGACTGGACATT
GGTGGCCAGGGAGAAGCCCTTGGATATCGCCAGGATGATCCCAGCTACCGTTCTTTTCACTCTGGTGGAT
ACGGCCAGGATGCCTTGGGATGGACCTATGATGGAGCATGAGATGGGTGGCCACCACCCTGGTGTGTA
CTATCCAGTTGATGGGCTGCCTGATCTGGGACACGCCAGGACCTCATGGATGGGCTGCCCCAGGTGAT
AGCAATCAGCTGGCCTGGTTTGTACTGACCTG

ACGCGTACGCGGCCGCTCGAG - GFP Tag - GTTTAA

Protein Sequence: >MG210618 representing BC053065
 Red=Cloning site Green=Tags(s)

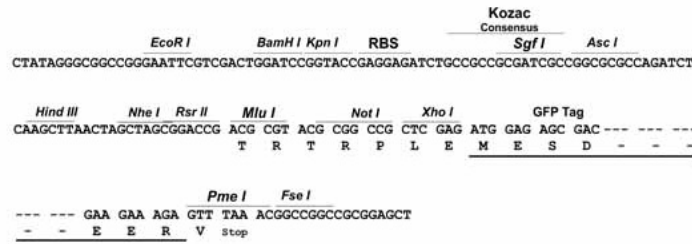
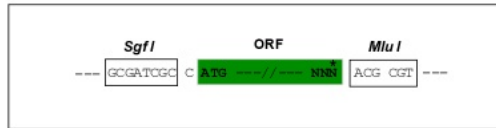
MATQADLMELDMAMEPDRKAAVSHWQQSYLDSGIHSGATTTAPSLSGKGNPEEEDVDTSQVLYEWEQGF
 SQSFTQEQVADIDGOYAMTRAQRVRAAMFPETLDEGMQIPSTQFDDAAHPTNVQRLAEPMSQLKHAVVNL
 NYQDDAELATRAIPELTKLLNDEDQVVVNKAAMVHQLSKKEASRHAIMRSPQMVSIVRTMQNTNDVET
 ARCTAGTLHNLSHHREGLLAIFKSGGIPALVKMLGSPVDSVLFYAITTLHNLHLLHQEGAKMAVRLAGGLQ
 KMVALLNKTNVKFLAITTDCLQILAYGNQESKLIILASGGPQALVNIMRITYTYEKLLWTTSRVLKVLVSV
 SSNKPAIVEAGGMQALGLHLTDPQRLVQNCLWTLRNLSDAATKQEGMEGLLGTLVQLLGSDDINVTCA
 AGILSNLTCNNYKNMMVCQVGGIEALVRTVLRAGDREDITEPAICALRHLSRHHQEAEMAQNAVRLHYG
 LPVVVLLHPPSHWPLIKATVGLIRNLALCPANHAPLREQAIPRLVQLLVRAHQDTQRRTSMGGTQQQF
 VEGVRMEEIVEGCTGALHILARDVHNRI VIRGLNTIPLFVQLLYSPIENIQRVAAGVLCELAQDKEAAEA
 IEAEGATAPL TELLHSRNEGVATYAAAVLFRMSDKPQDYKKRLSVELTSSLFRTEPMAWNETADLGLDI
 GAQGEALGYRQDDPSYRSFHSGGYGQDALGMDPMMHEMGGHHPGADYPVDGLPDLGHAQDLMDGLPPGD
 SNQLAWFDTDL

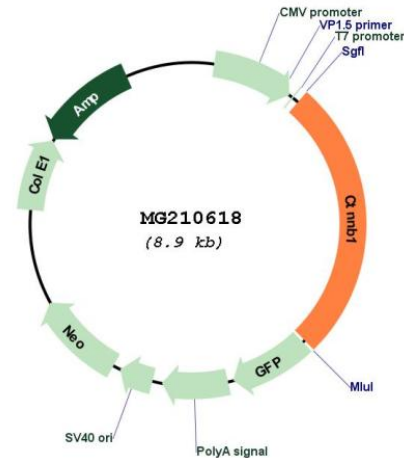
TRTRPLE - GFP Tag - V

Restriction Sites: SgfI-MluI

Cloning Scheme:

Cloning sites used for ORF Shuttling:



Plasmid Map:


ACCN: BC053065

ORF Size: 2343 bp

OTI Disclaimer: The molecular sequence of this clone aligns with the gene accession number as a point of reference only. However, individual transcript sequences of the same gene can differ through naturally occurring variations (e.g. polymorphisms), each with its own valid existence. This clone is substantially in agreement with the reference, but a complete review of all prevailing variants is recommended prior to use. [More info](#)

OTI Annotation: This clone was engineered to express the complete ORF with an expression tag. Expression varies depending on the nature of the gene.

Components: The ORF clone is ion-exchange column purified and shipped in a 2D barcoded Matrix tube containing 10ug of transfection-ready, dried plasmid DNA (reconstitute with 100 ul of water).

Reconstitution Method:

1. Centrifuge at 5,000xg for 5min.
2. Carefully open the tube and add 100ul of sterile water to dissolve the DNA.
3. Close the tube and incubate for 10 minutes at room temperature.
4. Briefly vortex the tube and then do a quick spin (less than 5000xg) to concentrate the liquid at the bottom.
5. Store the suspended plasmid at -20°C. The DNA is stable for at least one year from date of shipping when stored at -20°C.

RefSeq: [BC053065.1](#)

RefSeq Size: 3565 bp

RefSeq ORF: 2345 bp

Locus ID: 12387

Cytogenetics: 9 72.19 cM

Gene Summary:

This gene encodes not only an important cytoplasmic component of the classical cadherin adhesion complex that forms the adherens junction in epithelia and mediates cell-cell adhesion in many other tissues but also a key signaling molecule in the canonical Wnt signaling pathway that controls cell growth and differentiation during both normal development and tumorigenesis. The gene product contains a central armadillo-repeat containing domain through which it binds the cytoplasmic tail of classical cadherins; meanwhile, it also binds alpha-catenin, which further links the cadherin complex to the actin cytoskeleton either directly or indirectly. Beta-catenin is therefore necessary for the adhesive function of classical cadherins. Another key function of this protein is to mediate the canonical Wnt signaling pathway and regulate gene transcription. Without Wnt signal, cytoplasmic beta-catenin that is not associated with the cadherin complex is quickly phosphorylated at the N-terminal Ser/Thr residues by the so called degradation complex containing axin, adenomatous polyposis coli (APC), casein kinase I, and GSK3B, then ubiquitylated by beta-TrCP, and degraded by the proteasome. However, in the presence of Wnt signal, the degradation complex is disrupted and the stabilized cytoplasmic beta-catenin translocates into the nucleus, where it binds various transcription factors and, together with these factors, regulates the transcription of many downstream genes. Mutations of this gene have been linked with various types of tumors. Alternatively spliced variants have been found for this gene. [provided by RefSeq, Sep 2009]