

Product datasheet for **MG210615**

Strn (NM_011500) Mouse Tagged ORF Clone

Product data:

Product Type:	Expression Plasmids
Product Name:	Strn (NM_011500) Mouse Tagged ORF Clone
Tag:	TurboGFP
Symbol:	Strn
Synonyms:	AU022939; D130055P19
Mammalian Cell Selection:	Neomycin
Vector:	pCMV6-AC-GFP (PS100010)
E. coli Selection:	Ampicillin (100 ug/mL)



[View online »](#)

ORF Nucleotide
Sequence:

>MG210615 representing NM_011500
Red=Cloning site Blue=ORF Green=Tags(s)

TTTTGTAATACGACTCACTATAGGGCGGCCGGGAATTCGTCGACTGGATCCGGTACCGAGGAGATCTGCC
GCC**CGCATCGCC**

ATGGACGAGCAGGCGGGGCCGGCTCTTCTTCAGCAACAACCACCCGGGAGCTGGCGGTGCTAAGGGC
TCGGCCCTCTGGCGGAGGCTGCAGCGGCCGGAGACGGAGCGGCTGCGCGGGGGCGGCCGAGCTCAGTA
CAGCCTCCCGGGGATCTTGCACCTCCTGCAGCAGCAATGGGCCCGCTTCGAGGTGGAGAGAGCCAGTGG
GAGGTGGAGCGGGCGGAGCTGCAGGCTCAGATTGCTTTCTTCAGGGGAGAGGAAAGGACAAGAAAATT
TGAAGAAAGATCTTGTGAGGAGGATCAAAATGCTGGAATATGCTTTGAAGCAGGAAAGAGCCAAATACCA
CAAGTTGAAATATGGGACAGAAGTGAATCAGGGAGACATGAAGCCTCCAAGCTATGACTCTGATGAAGGT
AATGAAACAGAGGTGCAGCCACAGCAAAATAGCCAGTTAATGTGAAACAAGGCCCGCAGCTACTCAGGC
AGTATCTCCAGGAGGTCCGCTACACAGATACTATTCTAGACGTGAAATCCAAGCGTGTGCGGGCATTGTT
GGGCTTTTCAAGTGATGCTACTGACAGGGAGGATGACAAAAACCAGGACTCAGTGATAAATGGCACAGAG
GCTGAAGTTAAAGAGACAGCAATGATTGAAAAATCCGAGCTAACGGATTCTGCCTCTGTGCTGGACAATT
TCAAAATCCTTGAAGTGCAGCTGCAGATGTCAGTGACGAGGACGAGGACGAGGACACTGATGGAAGAGC
CAAGAGTGTCACTTATACTTCCACAATTGTTAGGAAAAAGCATTGCCTGATACCAAGTGAAGATCGAGAC
ACAAAAGAAGCTCTGAAGGAGTTTACTTTCTTGTACATCAGAGGAAGGAGACAACGAATCTAGAAGCG
CAGGCGATGGAACCGACTGGGAAAAGGAAGATCAGTGTCTCACGCTGAAGCCTGGAATGTGACCAGGG
AGTGATCTCCAACTGAAGGAGCAGTACAAAAGGAGAGGAAGGGGAAGAAGGGGTGAAGAGGCCCAAT
AGGTCAAACACTACAAGATATGCTTGCTAATTTGAGAGACGTTGATGAACCTCCCTCCTTGACCCATCTG
TTGGCTCCCCTTCCAGACCCAGCAGCTCCAGGCTTCCAGAACAGGAGCTCAGTAGGGCAGATGAAGTGGA
AGCGCTGACATCCCCCTTCTTCTGGGAAGTCATTTATCATGGGAGCAGACGAAGCCCTTGAGAGCGAG
CTGGGGCTTGAGAATTAGCAGGCTCACGGTGGCCAATGAAGCAGACTACTAGCTTATGATATAGCGA
ATAACAAAGATGCCTTGAGGAAGACGTGGAACCTAAGTTTACATTAAGGAGTCACTTTGATGGCATCCG
AGCCCTTGCTTTCCACCCATTGAGCCTGTGTTAATAACAGCCTCAGAGGACCATACGCTGAAAATGTGG
AATCTACAGAAAACAGCCCCAGCCAAAAGAGTACTTCTCTAGATGTGGAGCCTATCTATACATTACGGG
CTCACAAAGGCCCGTGTGTGTGGTCATGAGTAGCAATGGTGAGCAGTGCTACAGCGCGGGACTGA
CGGGCGGATCCAGAGCTGGAGCACCAATCCCAACGTCGATCCCTACGACGCTTACGATCCTTCAGTT
CTAAGAGGCCCTCTGCTGGGCCACAGGACGCGGTATGGGGCTGGCCTACAGTGCGGCACACCAGCGCT
TGCTCTCCTGCTCAGCAGACGGCACTCTTCGCTTATGGAATACAACCTGAGGTTGCTCCAGCACTGAGTGT
ATTTAATGATAACCAAGAGCTGGGAATTCCTGCCTCTGTGGATCTGGTGAGCAGCGACCCGAGCCATATG
GTAGCATCGTTACGAAGGGATATAACAAGCATCTTAAACATGGAACACAGCAGCGAGTTCTCACGCTAG
AATCCAATGTTGATTCAACATCCAGTTCTTCTGCCAAAATAACAGAGTCATCAGCCATCCTACCCCTCC
AATCAGCATCACTGCTCATGAAGACAGGCACATCAAGTTCTACGATAACAATACAGGCAAACTGATCCAC
TCGATGGTGGCCACCTGGAAGCTGTGACAAGCCTGGCAGTTGACCCGAATGGCCTCTACTTGATGTCTG
GCAGTCATGACTGTTCAATACGCTTATGGAATTTAGAAAGTAAGACATGTATCCAGGAGTTCACAGCTCA
TCGGAAGAAATTTGAAGAATCGATCCACGATGTAGCGTTCACCCCTTCCAATGCTATATAGCCAGCGCT
GGAGCCGACGCCCTGGCTAAGGTCTTTGTA

ACGCGTACGCGGCCGCTCGAG - GFP Tag - GTTTAA

Protein Sequence: >MG210615 representing NM_011500
 Red=Cloning site Green=Tags(s)

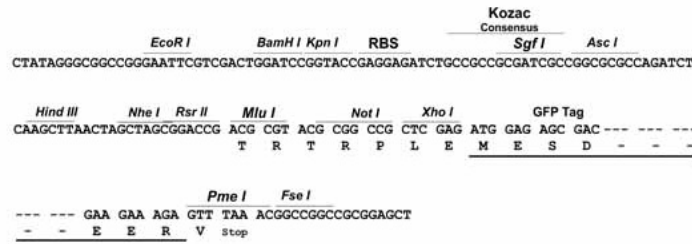
MDEQAGPGVFFSNNHPGAGGAKGLGPLAEAAAAGDGAAGAARAQYSLPGILHFLQHEWARFEVERAQW
 EVERAELQAQIAFLQGERKQENLKKDLVRRKMLEYALKQERAKYHKLKYGTELNQGDMKPPSYDSDEG
 NETEVQPQNSQLMWKQGRQLLRQYLQEVGYTDTILDVKSKRVRALLGFSSDVTDREDDKNQDSVINGTE
 AEVKETAMIGKSELTDSASVLDNFKFLESAAADVSEDEDEDEDTDGRAKSVIDTSTIVRKKALPDTSEDRD
 TKEALKEFDLVTSEEGDNEERSAGDGTDWEKEDQCLTPEAWNVDQGVISKLKEQYKKERKGGKGVKRPN
 RSKLQDMLANLRDVELPSLQPSVSGSPSRPSSSRLPEQELSRADVEALTFPPSSGKSFIMGADAELESE
 LGLGELAGLTVANEADSLAYDIANNKDALRKTWNPKFTLRSHFDGIRALAFHPPIEPVLITASEDHTLKMW
 NLQKTAPAKKSTSLDVEPIYTFRAHKGPVLCVVMSSNGEQCYSGGTDGRIQSWSTNPNVDPYDAYDPSV
 LRGPLLGHGHTDAVWGLAYSAHQRLRLSCSADGTLRLWNTTEVAPALSVFNDNQELGIPASVDLVSSDPSHM
 VASFSKGYTSIFNMETQQRVLTLESNV DSTSSSCQINRVISHPTLPISITAHEDRHIKFDYDNTGKLIH
 SMVAHLEAVTSLAVDPNGLYLMGSHDCSIRLWNLESKTCIQEFTAHRKKFEESIHDVAFHPSKCYIASA
 GADALAKVFFV

TRTRPLE - GFP Tag - V

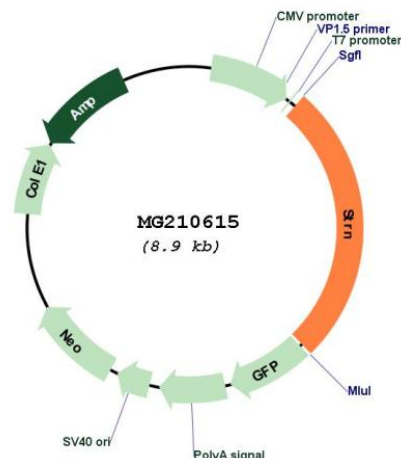
Restriction Sites: SgfI-MluI

Cloning Scheme:

Cloning sites used for ORF Shuttling:



Plasmid Map:



ACCN: NM_011500

ORF Size: 2340 bp

OTI Disclaimer: The molecular sequence of this clone aligns with the gene accession number as a point of reference only. However, individual transcript sequences of the same gene can differ through naturally occurring variations (e.g. polymorphisms), each with its own valid existence. This clone is substantially in agreement with the reference, but a complete review of all prevailing variants is recommended prior to use. [More info](#)

OTI Annotation: This clone was engineered to express the complete ORF with an expression tag. Expression varies depending on the nature of the gene.

Components: The ORF clone is ion-exchange column purified and shipped in a 2D barcoded Matrix tube containing 10ug of transfection-ready, dried plasmid DNA (reconstitute with 100 ul of water).

Reconstitution Method:

1. Centrifuge at 5,000xg for 5min.
2. Carefully open the tube and add 100ul of sterile water to dissolve the DNA.
3. Close the tube and incubate for 10 minutes at room temperature.
4. Briefly vortex the tube and then do a quick spin (less than 5000xg) to concentrate the liquid at the bottom.
5. Store the suspended plasmid at -20°C. The DNA is stable for at least one year from date of shipping when stored at -20°C.

RefSeq: [NM_011500.3](#)

RefSeq Size: 3965 bp

RefSeq ORF: 2343 bp

Locus ID: 268980

UniProt ID: [O55106](#)

Cytogenetics: 17 E3

Gene Summary:

Binds calmodulin in a calcium dependent manner. May function as scaffolding or signaling protein.[UniProtKB/Swiss-Prot Function]