

## Product datasheet for **MG210605**

### Hcn3 (NM\_008227) Mouse Tagged ORF Clone

#### Product data:

Product Type:	Expression Plasmids
Product Name:	Hcn3 (NM_008227) Mouse Tagged ORF Clone
Tag:	TurboGFP
Symbol:	Hcn3
Synonyms:	BCNG-4; Bcng4; Hac3; Hcn4
Mammalian Cell Selection:	Neomycin
Vector:	pCMV6-AC-GFP (PS100010)
E. coli Selection:	Ampicillin (100 ug/mL)



[View online »](#)

**ORF Nucleotide Sequence:**

>MG210605 representing NM\_008227  
 Red=Cloning site Blue=ORF Green=Tags(s)

TTTTGTAATACGACTCACTATAGGGCGGCCGGGAATTCGTCGACTGGATCCGGTACCGAGGAGATCTGCC  
 GCC**CGGATCGCC**

ATGGAGGAGGAGCGCGGCCGGCGGGGCCGGAAGCGCGACCCCTGCACGCGAGACGCCTCCTG  
 CGGCTCCGGCCAGGCCCGCGCGCCTCAGGTGGGGTCCCGGAGTCTGCGCCGAGCCGAAGAGGCGCA  
 GCTCGGGACGCTGCTGCAGCCGACGGTCAACAAGTTCTCTCCGGTCTTCGGCAGCCACAAAGCAGTA  
 GAAATCGAGCAGGAGAGGGTGAAGTCCGCCGGGCCTGGATCATCCACCCTACAGCGACTTCCGGTTTT  
 ACTGGGATCTCATGCTGCTGCTGATGGTGGGGAACCTCATAGTTCTGCCTGTGGGTACACTTTCTT  
 CAAGGAGGAGAACTCTCCACCCTGGATCGTCTTCAATGTCCTCTGACACTTTCTTCTGCTGGATCTG  
 GTGCTCAACTCCGAAGTGGCATCGTGGTGGAGGAAGTGCCGAGATCCTGCTGGCGCAAGGGCCATCC  
 GAACGCGTTACCTGCGCACCTGGTTCCTGGTTGATCTGATCTCCTCCATCCCTGTGGATTATATCTTCT  
 AGTGGTGGAGCTGGAGCCAGCTAGATGCTGAGGTCTACAAAACGGCACGGGCCCTGCGCATCGTTAGA  
 TTCACCAAGATCCTTAGCCTGCTGCGGCTGCTCCGCCTCTCCCGCTCATCCGCTACATACACCAGTGGG  
 AGGAGATCTTTCACATGACCTACGACCTGGCCAGTGCAGTGGTTCGCATCTTCAACCTCATTGGAATGAT  
 GTTGCTGCTGTGCACTGGGACGGCTGTCTGCAGTTTCTGGTCCCTATGCTGCAGGACTTCCCGTCCGAC  
 TGCTGGGTCTCCATGAACCGCATGGTGAACCACTCGTGGGGCCCGCAGTATCCACGCCCTGTTCAAGG  
 CCATGAGTCACATGCTATGCATTGGCTATGGGCAGCAGGCACCGGTAGGCATGCCTGACGCTGGCTCAC  
 CATGCTCAGTATGATTGTGGCGCCACGTGTTATGCCATGTTTCATCGGTACGCCACCGCCCTCATCCAG  
 TCCCTGGACTCTCCCGCGACAGTACCAGGAGAAGTACAAGCAGGTGGAGCAGTACATGCTTCCACA  
 AGCTGCCCGCTGACACCCGGCAGCGCATCCACGAGTACTACGAGCATCGTACCAGGGCAAGATGTTTGA  
 TGAAGAGAGCATCCTGGGGGAGCTGAGCGAGCCACTTCGGGAGGAGATTATTAACCTCACCTGCCGGGC  
 CTGGTGGCCACATGCCGCTGTTTGCTCATGCTGACCCAGCTTCGTACCCGAGTGTCTACCAAGCTCC  
 GTTTTGAGGTCTTCCAACCAGGGGACCTGGTGGTGCCTGAGGGCTCCGTGGGCAGGAAGATGTAATTCAT  
 CCAGCACGGGCTGCTGAGTGTGCTGGCACGTGGCGCCCGCAGACCCGCCTCACTGATGGATCCTACTTT  
 GGGGAGATCTGCCTGCTGACTCGAGGTCGGAGAACAGCCAGTGTAAAGGCTGACACCTATTGTCGCCTCT  
 ACTCGCTCAGCGTGGACCACTTCAATGCGGTGCTTGAAGGATTCCTCAATGATGCGCAGGGCTTTGAGAC  
 GGTGGCCATGGACCGCTTCGGCGCATCGGCAAAAAGAATTCGATACTGCAGCGGAAACGCTCTGAGCCG  
 AGTCCAGGCAGCAGCGGTGGCGTCATGGAGCAGCATTGTTACAACACGACAGAGACATGGCTCGTGGTG  
 TTCGGGGCTGGCTCCTGGTACAGGAGCTCGACTCAGTGGAAAGCCAGTGTGTGGGAACCACTGGTGCA  
 CGCCCTCTGCAGGCAGCTGCTGTGACCTCCAACGTGGCCATAGCCTTGACTCACCAGCGAGGCCCTCTG  
 CCCCTCTCCCCTGATTCTCCAGCCACCCTCCTAGCTCGATCTGCTAGACGCTCAGCAGGCTCCCCAGCCT  
 CCCACTGGTGCCTGTCCGAGCAGGTCCTCTGCTGGCCCGGGGACCCCTGGGCGTCCACTTCTCGCCTGCC  
 TGCTCCACCTGCCGAACCTCCATGCCAGCCTATCCCGACAGGGCGTTCACAGGTATCTCTGTTGGGC  
 CCTCCCCAGGAGGAGGTGCTCGGAGGCTAGGACCTCGGGGCCGCCACTTCTGCCTCGCAACCTCTC  
 TGCTCAGCGAGCAACAGGGGATGGCTCTCCTAGGCGTAAAGGCTCTGGAAGTGAAGCGCTGCCCCCTC  
 TGGGCTTTGGCCAAACCTCCAGGACAGTCCAGCCACCCAGGTATCAGTGCCTGAGCCAGTTACCCCC  
 AGAGTCCCAAAATTTTGCCAACATG

AGCGGACCGACGCGTACGCGGCCGCTCGAG - GFP Tag - GTTTAA

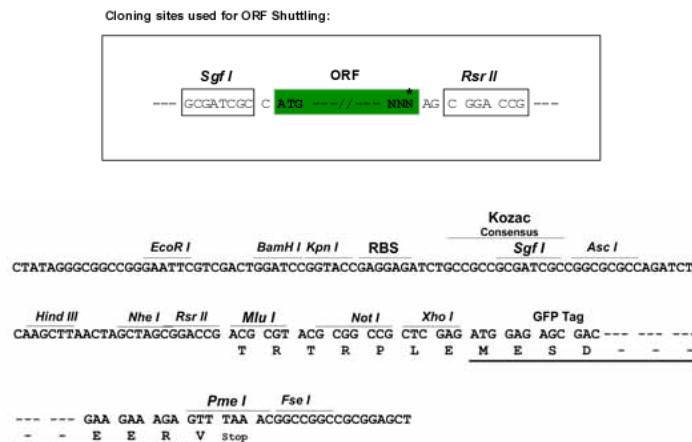
**Protein Sequence:** >MG210605 representing NM\_008227  
 Red=Cloning site Green=Tags(s)

MEEEARPAAGAGEAATPARETPPAAPAQARAASGGVPESAPEPKRRQLGTLTLLQPTVNFSLRVFGSHKAV  
 EIEQERVKSAGAWIIHPYSDFRYWDLIMLLLMVGNLIVLPVGIFFKEENSPPWIVFNVLSDTFFLLDL  
 VLNFRTGIVVEEGAEILLAPRAIRTRYLRTWFLVDLISSIPVDYIFLVVELEPRLDAEVYKTARALRIVR  
 FTKILSLLRLLRSLRIRYIHQWEEIFHMTYDLASAVVRIFNLIGMMLLLCHWDGCLQLFVPLQDFPSD  
 CWVSMNRMVNHSWGRQYSHALFKAMSHMLCIGYQQAPVGMPPVWLTMLSMIVGATCYAMFIGHATALIQ  
 SLDSSRRQYQEKYKQVEQYMSFHKLPAQTRQRIHEYYEHRYQGKMFDEESILGELSEPLREEIINFTRCG  
 LVAHMPLFAHADPSFVAVLTKLRFVFPQDGLVVREGSVGRKMYFIQHGLLSVLARGARDTRLTDGSYF  
 GEICLLTRGRRTASVRADTYCRLYSLVDHFNVALEEFPMRRAFETVAMDRLRRIGKKNLSLQQRKSEP  
 SPGSSGGVMEQHLVQHDRDMARGVRGLAPGTGARLSGKPVLWEPLVHAPLQAAAVTSNVAIALTHQRGPL  
 PLSPDSPATLLARSARRSAGSPASPLVPVRAGPLLARGPWASTSRLPAPPARTLHASLSRTGRSQVSLLG  
 PPPGGGARRLGRGRPLSASQPSLPQRATGDGSPRRKSGSERLPPSGLLAKPPGTVQPPRSSVPEPVTP  
 RGPQISANM

SGPTRRRLE - GFP Tag - V

**Restriction Sites:** SgfI-RsrII

**Cloning Scheme:**



**ACCN:** NM\_008227

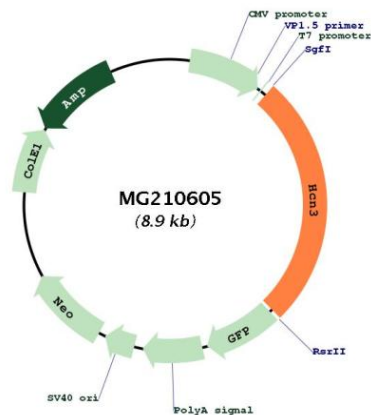
**ORF Size:** 2337 bp

**OTI Disclaimer:** The molecular sequence of this clone aligns with the gene accession number as a point of reference only. However, individual transcript sequences of the same gene can differ through naturally occurring variations (e.g. polymorphisms), each with its own valid existence. This clone is substantially in agreement with the reference, but a complete review of all prevailing variants is recommended prior to use. [More info](#)

**OTI Annotation:** This clone was engineered to express the complete ORF with an expression tag. Expression varies depending on the nature of the gene.

<b>Components:</b>	The ORF clone is ion-exchange column purified and shipped in a 2D barcoded Matrix tube containing 10ug of transfection-ready, dried plasmid DNA (reconstitute with 100 ul of water).
<b>Reconstitution Method:</b>	<ol style="list-style-type: none"><li>1. Centrifuge at 5,000xg for 5min.</li><li>2. Carefully open the tube and add 100ul of sterile water to dissolve the DNA.</li><li>3. Close the tube and incubate for 10 minutes at room temperature.</li><li>4. Briefly vortex the tube and then do a quick spin (less than 5000xg) to concentrate the liquid at the bottom.</li><li>5. Store the suspended plasmid at -20°C. The DNA is stable for at least one year from date of shipping when stored at -20°C.</li></ol>
<b>RefSeq:</b>	<a href="#">NM_008227.1</a> , <a href="#">NP_032253.1</a>
<b>RefSeq Size:</b>	3268 bp
<b>RefSeq ORF:</b>	2340 bp
<b>Locus ID:</b>	15168
<b>UniProt ID:</b>	<a href="#">O88705</a>
<b>Cytogenetics:</b>	3 F1
<b>Gene Summary:</b>	Hyperpolarization-activated potassium channel. May also facilitate the permeation of sodium ions.[UniProtKB/Swiss-Prot Function]

### Product images:



Circular map for MG210605