

Product datasheet for **MG210601**

Iqce (NM_028833) Mouse Tagged ORF Clone

Product data:

Product Type:	Expression Plasmids
Product Name:	Iqce (NM_028833) Mouse Tagged ORF Clone
Tag:	TurboGFP
Symbol:	Iqce
Synonyms:	1700028P05Rik; mKIAA1023
Mammalian Cell Selection:	Neomycin
Vector:	pCMV6-AC-GFP (PS100010)
E. coli Selection:	Ampicillin (100 ug/mL)



[View online »](#)

ORF Nucleotide Sequence:

>MG210601 representing NM_028833
 Red=Cloning site Blue=ORF Green=Tags(s)

TTTTGTAATACGACTCACTATAGGGCGGCCGGGAATTCGTCGACTGGATCCGGTACCGAGGAGATCTGCC
 GCC**CGGATCGCC**

ATGAGCCTGGGCACCACAGATATAGCCTCGGAGACGGGAGATGACAGTCTGTCTGCTATTACCTTTGAAT
 CTGACATTGAGTCGAAAACAAAAAGGAAAAGTTTCCACAAACCTCCTTCCACATCACAAAAGTCGCCCTA
 CTACTCCAAACCCAGAAAAGTGACCTCCTGGCGATCTCTGAAGACGGCAGGGAGCATGCCTCTGAGTAGC
 AGAATGTCCTTGACCCACAGAAGCTGTGGCTGGGATCCTCGAAACAGGGTAGTGTGCCCAACCCCGA
 GCCCACGCTTACCTCGGAGCACGCTGGACCCACCCCCAGCTGCACTCCCGACTACCTGACAGAAGC
 CGTGAGAGCGAAGAGGGCAGACCTCAGGCGTTCTGGCAGCCATGGTCACGTCTCTGGGACTTCCGCTAC
 AGAGAGAAGGAGGACATGTACGACGAGATCATCGAGTTGAAGAAGTCCTTACATATGCAGAAAAGTGATG
 TGGATCTGATGAGAACAAAGCTTCGGCGCTTGAAGAGGAGAACAGCAGAAAAGGATCGGCAGATAGAACA
 GCTTCTGGATCCAAGTCGAGGCCAGACTTCGTGCGAACCTTGGCAGAGAAGAAGCTGACACGGGCTGG
 GTCATCACCGGGCTCAAACAAAGGATCTTCAGGCTGGAGCAGCAATGCAAGGAGAAGGACAACACTATCA
 ACAAACCTGCAGACGGACATGAAGACCACCAACCTGGAGGAGATGCGCATTGCCATGGAAACATACTACGA
 AGAGATCCATCGTCTGCAGACCCCTCTGGCGAGTTCTGAAGCCACAGGAAAGAAGCCCATGGTGGAGAAG
 AAAGTGGGTGTGAAGAGGCAGAGAAGATGAGCAGTGCCTGCTGAACCTAACACGGAGTGTGCAGGAGC
 TGACCGAGGAGAACCAGAGCCTGAAGGAGGACCTGGACCGCATGCTGAGCAATTCACCCACCATCTCAA
 AATAAAGGTTACGGGGACTGGAGCAAGCCCGGCTGCTGAGACGCATCGCAGAGCTAGAAAAGAAAAGTG
 AGTTCCTCAGAAAGCCAAAGCAATCGACTTCAGAGCTGGTGAATCCGAATCCCCTGGTCCGCTCCCAT
 CCAACATCTCAGTCAAAAAGCAGCCGAAAGGGGACCAGTCCCCAGAGGACCTGCCAAGGTGGCCCGCTG
 TGAGGAACAAGAGCATCTCCAAGGAACCGTGAAGAGCCTGAGAGAGGAGCTGGGTGCACTGCAGGAGCAG
 CTGCTGGAGAAAGACCTGGAGATGAAGCAGCTGCTACAGTCCAAGATCGACCTGGAGAAGGAGTTGGAGA
 CAGCCAGGAAAGGCGAGAAGGGGAGGCAGGAGCAGGAGCAGGCTTTGAGGGAGGAAGTTGAAGCACTCAC
 CAAAAATGTCAAGAAGTGAAGAAGCTAAGAGAGAAGAGAAAACTCCTTCGTAGCAGTGAATCATGAG
 GCTCATCCAGAGCTCCATGCCCCCTCGCCCTGCAGCAGGCACTCCGAGCCAGACTCTGACAATAGTGCTG
 GTGAGGAGGTAGCTCCCAACCCCTGCCCATGCTCTGAAGAGAGGAGAGAGGCTGCCATTAGGACCT
 GCAGGCGCAGTGAAGGCCACAGGCGCAAGAAAAGAGAAGCAGCTCTGGATGAGGCAGGACTGTGCTC
 CAGGCAGCCTTCAGGGGACACCTAGCTCGTTCGAAGCTTGTACGCAGCAAAGTCCAGACTCCAGGTCTC
 CCAGCCTGCCGGGCTTCTCAGCCCTTTAACCAGAGTTCCTCGCGCCCGTGTCTAAGCCCCATCTC
 CCCGGTGAAGAGAACCACACAAAGAGGAGGCTGTCATCGTTATCCAGTCCATCCTCCGTGGATACCTG
 GCCCAGGCCAGGTTAATTGCCAGCTGCTGTGAGAGATTGCGGCGTCTCTCAGAGGAAACTGTTTCAT
 TGACACCTCAGGATCTGCCTCCCACCCTCCCTCAGAGCTTCTCCCGAGTGTCCGCAAGGAGCTCTG
 TGCTCGGAGGAGCTGAGGGAGACCTCTGCATCTGAACCTGCCCCCTCCGTCCCCACTCCGCCAAGGT
 GGCCACGGGGACTGCCGTCCTCATCCAGTCTGGAGGCTGTGCCAGTATGAAGGATGCCATGTGTGAGG
 AAAGGAGCAGCAGCCCTAGAAGCGCAGGGCCATCCTTGGCTGAGCCCTCTCCCCAGAAGTGCAGCCCT
 GTCACCACCACCTGTGGAGGACATCTGCTCGGATGACTCAGATGACATTATCTTTTCGCCATTTCTGCC
 AGGAAGAAAAGCCCTCCCCGTTTC

AG**CGGACCG**ACGCGTACGCGGCCGCTCGAG - GFP Tag - GTTTAA

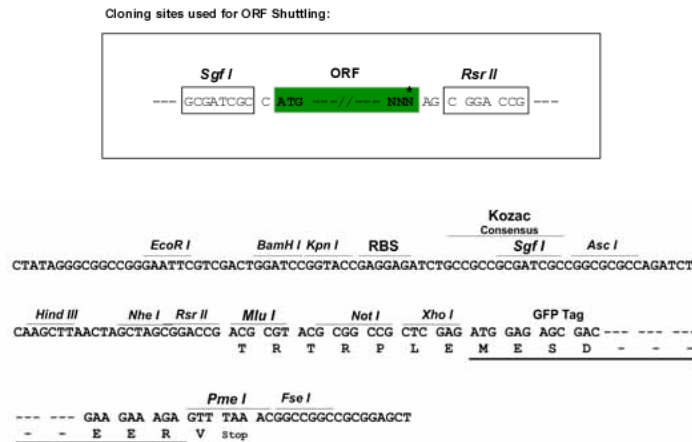
Protein Sequence: >MG210601 representing NM_028833
 Red=Cloning site Green=Tags(s)

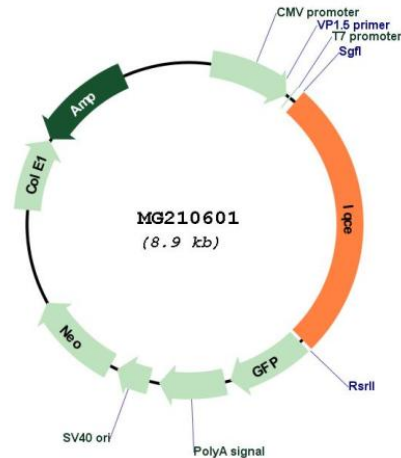
MSLGTTDIASETGDDSLSAITFESDIESKTKRKSFKKPPSTSPKSPYYSKPRKVTSWRSLKTAGSMPLSS
 RMSLTPQKLWLGSSKQGSVAQPPSPTLTSEHAWTHPPSCTPDYL TEAVRAKRADLRRSGSHGHVSGTSVY
 REKEDMYDEIIELKKSLSHMOKSDVDLMRTKLRRLEEENSRKDRQIEQLLDPSRGPDPFVRTLAEKKPDGTW
 VITGLKQRIFRLEQQCKEKDNTINKLQTDKTTNLEEMRIAMETYYEEIHLRQLTLASSEATGKKPMVEK
 KLGVKRQKKMSSALLNLRVSVQELTEENQSLKEDLDRMLSNSPTISKIKGYGDWSKPRLLRRIAELEKKV
 SSSESPKQSTSELVNPPLVRSPNISVQKQPKGDQSPEDLPKVAPCEEQEHQGTVKSLREELGALQEQ
 LLEKDLEMKQLLQSKIDLEKELETAREGEKGRQEALREEVEALTKKCQELEEAKREEKNSFVAVTHE
 AHPHELHAPSPCSRHSEPDSDNSAGEEGSSQPPAPCSEERREAAIRTLQAQWKAHRRKKREAAALDEAAVTL
 QAAFRGHLARSKLVRKVPDSRSPSLPGLLSPLNQSSPAPRVLSPISPAEENPTQEEAVIVIQSILRGYL
 AQARFIASCCREIAASSQRETVSLTPSGSASPPSLRASPGVIRKELCASEELRETSASEPAPSVPYSAQG
 GHGDCPSSSSLEAVPSMKDAMCEERSSSPRSAGPSLAEPSPPELQPLSPPPVEDICSDSDDIIFSPFLP
 RKKSPSPF

SGPTRRRLE - GFP Tag - V

Restriction Sites: SgfI-RsrII

Cloning Scheme:



Plasmid Map:


ACCN: NM_028833

ORF Size: 2334 bp

OTI Disclaimer: The molecular sequence of this clone aligns with the gene accession number as a point of reference only. However, individual transcript sequences of the same gene can differ through naturally occurring variations (e.g. polymorphisms), each with its own valid existence. This clone is substantially in agreement with the reference, but a complete review of all prevailing variants is recommended prior to use. [More info](#)

OTI Annotation: This clone was engineered to express the complete ORF with an expression tag. Expression varies depending on the nature of the gene.

Components: The ORF clone is ion-exchange column purified and shipped in a 2D barcoded Matrix tube containing 10ug of transfection-ready, dried plasmid DNA (reconstitute with 100 ul of water).

Reconstitution Method:

1. Centrifuge at 5,000xg for 5min.
2. Carefully open the tube and add 100ul of sterile water to dissolve the DNA.
3. Close the tube and incubate for 10 minutes at room temperature.
4. Briefly vortex the tube and then do a quick spin (less than 5000xg) to concentrate the liquid at the bottom.
5. Store the suspended plasmid at -20°C. The DNA is stable for at least one year from date of shipping when stored at -20°C.

RefSeq: [NM_028833.3](#), [NP_083109.2](#)

RefSeq Size: 4359 bp

RefSeq ORF: 2337 bp

Locus ID: 74239

UniProt ID: [Q6PCQ0](#)

Cytogenetics: 5 G2

Gene Summary: Component of the EvC complex that positively regulates ciliary Hedgehog (Hh) signaling (PubMed:24582806). Required for proper limb morphogenesis (By similarity). [UniProtKB/Swiss-Prot Function]