

## Product datasheet for **MG210600**

### **Rgl2 (NM\_009059) Mouse Tagged ORF Clone**

#### **Product data:**

Product Type:	Expression Plasmids
Product Name:	Rgl2 (NM_009059) Mouse Tagged ORF Clone
Tag:	TurboGFP
Symbol:	Rgl2
Synonyms:	KE1.5; Rab2l; Rgt2; Rlf
Mammalian Cell Selection:	Neomycin
Vector:	pCMV6-AC-GFP (PS100010)
E. coli Selection:	Ampicillin (100 ug/mL)



[View online »](#)

**ORF Nucleotide Sequence:**

>MG210600 representing NM\_009059  
 Red=Cloning site Blue=ORF Green=Tags(s)

TTTTGTAATACGACTCACTATAGGGCGGCCGGGAATTCGTCGACTGGATCCGGTACCGAGGAGATCTGCC  
 GCC**CGGATCGCC**

ATGCTCCCGCGGCCCTGCGGCTGCTTTTGGACACGACCCCCCGGGGAGTCGTGCTGAGCAGCTTCC  
 GGAGCCGGGACCCGAAGAGGGTGGGGACCCAGGTGGCCGGGCCGTGGGCGGGGGCAGGAGGAAGAGGA  
 TGAGGAAGAAGAAGAGGCTTCTGTGTCACTCTGGGACGAGGAGGAGGATGGTGCGACCTTTACTGTCA  
 AGCCGCCAGTACAGGCCTCTTGACCCCTTGGCTCCCTTGCCTCCACCTCGCTCCTCCCGACGGCTCCGCG  
 CTGGCACTCTGGAGGCCCTGGTCAACACCTCTTGGATGCCAGGACAGCAGGGGTGACATGATGTTTAC  
 TCCGGCCTTGGTCCACCCACCGGGCCTTCACTCCACTCCTGCCCTGTTTGGGCTTGTGGCTGACAGG  
 CTGGAAGCCCTGAATCTCATCTCCCGGTGAGCTAGAGAGGACCACAGGGGTAGCCATCTCTGTACTTT  
 CAACTTGGCTGGCCTCTACCCCTGAGGATTTTGGCTCTGAGGTCAAGGGTCAACTTGACCGGCTTGAGAG  
 CTTCTTGTTCGACAGGGTATGCAGCACGGGAGGGTGTGTGGGGGGCAGTGCTGACCTCATCCGAAAC  
 CTCGGGGCCCGGGTGGACCCCGGGCCCGACCTTCTAAGCCCTGGCCCTTCTGGCGATTCCCTGT  
 CTGACCCACGGATGTCCTGGTGTCTCGCTGACCCTTGGCCGAACAGCTGACCTGCTAGATGCGGA  
 ACTGTTTCTTAATCTGATCCCCTCTCAGTGTGGGAGGCCTCTGGGGTACAGAGACCGGCCAGGACAT  
 TCTCACCTCTGCCGCTGTCCGAGTACCGTACACAGTTCAACAAGGTGGCGGGGGCGGTAGTTAGCT  
 CTGTCTTGGGGCCACCTCAATTGGAGAGGGGCAAGAGAGGTGACTGTGAGACCACTGCCGCCCCACA  
 GAGGGCCCGGCTCTAGAGAAGTGGATCCGTGTGGCCGAGGAGTGCCGCTGCTTCGGAACTTCTCTCA  
 GTGTATGCTGTTGTGTCGCTTGCAGTCCAGCCCTATCCACAGGCTTCGGGCAGCCTGGGGGAGACAA  
 CCAGGGACAGCCTCCGAGTCTTTCCAGCCTGTGCCAGATTTTCTCAGAGGAGGATAATTTCCAGAG  
 CAGAGAGCTCCTCATGCAGGAAGTGAAGCCGACGCCCTGTGGAGCCACACTCCAAGAAGGCCCAAGG  
 TCTGGCTTCAAGGGTGGGGTGTGGTCCCTACCTGGGAACCTTCTGAAGGACCTCGTGATGCTGGATG  
 CGGCCTCAAGGATGAGCTGGAGAATGGCTACATCAATTTGACAAGCGGAGGAAGGAGTTTGTATCCT  
 TTCGGAGCTGTTGCGCTCCAGAAAGAATGTCGTGGCTACGACCTCCGACCTAAGCTGATATCCAGCAA  
 TGGCTCCAGGGCCTCCAGCCTTAACTGAAGCTCAGAGTACCGTGTATCCTGTGAAGTGGAGCCACCAG  
 GGACAGTGACTCCCCGCTGCAAGGACACCTCGGCCAACACTAGTGATCACACAGTGGACGGAAGTTCT  
 GGGCTCTGTTGGAGGCCCACTCCGCTTGTGCTCCTGGGATCGGCCAGTGTGGGGGAGATGAGGTGCT  
 GGAACCCAGCACCTCTGCTGACTCGCCTCGCCAGCACATGAAGTGGCCATCAGTCTCATCTCTGGACT  
 CTGCCCTGGAAAGCAGCCCTCCTTGCACAGCCCTGCTGACCCTGGCCACCTCTCTCTCCAGCCTCCTC  
 CCTAGGCCTTCCCGGGTCAACCGTCCGCTCAGCCTCCTGTGGGTCTCCGTTGAGTGGAAACACAGGAGAA  
 GGGACCTTAGGAGTGTGGATGTGGGGCGGGGTATCTGGGCCAGGGTCTCTGATTGCCGAATCATCC  
 GAGTCCAGATGGAGCTGGGGGAGGATGGCAGCGTCTACAAGAGCATCCTGGTGACAAGCCAGGACAAAGC  
 TCCAAGTGTATTAGTCGTGCTTAAGAAAAACAATCGTGATTCTGCTGTGGCTTCCAGAGTTCGAGCTG  
 GTGCAGCTGCTACCTGGGGATCGAGAGCTGACCATCCACACTCAGCTAACGTCTTCTATGCCATGGATG  
 GTGCATCTCATGACTTCTCTCGGCAGCGCAGAAGACCCTCTGCTGCCACCCCGGGTCCACAGCGG  
 CCCCTCTGCCTCAGGAACCTCTCCGAGCGAGGGGGAGGGGCTCTTTCCAGGATCAAGGCCACGGGG  
 AGGAAGATTGCACGGGCACTGTTC

**ACGCGT**ACGCGGCCGCTCGAG - GFP Tag - GTTTAA

**Protein Sequence:** >MG210600 representing NM\_009059  
 Red=Cloning site Green=Tags(s)

```

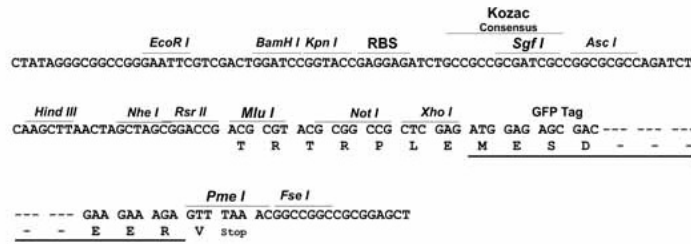
MLPRPLRLLLDTPPGGVVLSFRSRDPEEGDPGGRAVGGGQEEEEEEEEASVSVWDEEEDGATFTVT
SRQYRPLDPLAPLPPRSTRRLRAGTLEALVRHLLDARTAGADMMFTPALLATHRAFTSTPALFGLVADR
LEALESHPPELERTTGVAISVLSTWLASHPEDFGSEVKGQLDRLESFLLRTGYAAREGVVGGSSADLIRN
LRARVDPRAPDLKPLALPGDSPADPTDVLVFLADHLAEQLTLDAELFLNLIPSQCLGGLWHRDRPGH
SHLCPSVRATVTQFNKVAGAVVSVL GATSI GEGPREVTVRPLRPPQARALLEKWIRVAEECRLLRNFSS
VYAVVSALQSSPIHRLRAAWGETTRDSLRFVSSLCQIFSEEDNYSQSRELLMQEVKQPVPVEPHSKKAPR
SGFRGGGVVYPYLGTFKDLVMLDAASKDELENGYINFDKRRKEFAILSELLRLQKECRGYDLRPNSDIQQ
WLQGLQPLTEAQSHRVSCEVEPPGTS SPAARTPRPTLVITQWTEVLGSVGGPTPLVSWDRPSVGGDEV
GTPAPLLTRLAQHMKWPSVSSLD SALESSPSLHSPADPGHLSPPASSPRPSRGHRRSASC GSPLSGNTGE
GTSRSAGCGGGVSGPGSSDCRIIRVQ MELGEDGSVYK SILVTSQDKAPSVISRVLKNNRDSAVASEFEL
VQLLPDRELTI PHSANVFYAMDGASHDFLLRQRRRPSAATPGSHSGPSASGTPPSEGGG SFPRIKATG
RKIARALF
  
```

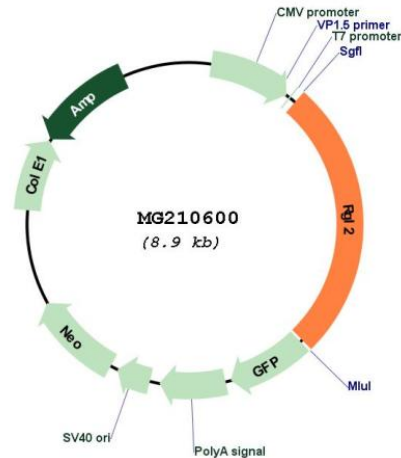
TRTRPLE - GFP Tag - V

**Restriction Sites:** SgfI-MluI

**Cloning Scheme:**

Cloning sites used for ORF Shuttling:



**Plasmid Map:**


**ACCN:** NM\_009059

**ORF Size:** 2334 bp

**OTI Disclaimer:** The molecular sequence of this clone aligns with the gene accession number as a point of reference only. However, individual transcript sequences of the same gene can differ through naturally occurring variations (e.g. polymorphisms), each with its own valid existence. This clone is substantially in agreement with the reference, but a complete review of all prevailing variants is recommended prior to use. [More info](#)

**OTI Annotation:** This clone was engineered to express the complete ORF with an expression tag. Expression varies depending on the nature of the gene.

**Components:** The ORF clone is ion-exchange column purified and shipped in a 2D barcoded Matrix tube containing 10ug of transfection-ready, dried plasmid DNA (reconstitute with 100 ul of water).

**Reconstitution Method:**

1. Centrifuge at 5,000xg for 5min.
2. Carefully open the tube and add 100ul of sterile water to dissolve the DNA.
3. Close the tube and incubate for 10 minutes at room temperature.
4. Briefly vortex the tube and then do a quick spin (less than 5000xg) to concentrate the liquid at the bottom.
5. Store the suspended plasmid at -20°C. The DNA is stable for at least one year from date of shipping when stored at -20°C.

**RefSeq:** [NM\\_009059.2](#), [NP\\_033085.2](#)

**RefSeq Size:** 2967 bp

**RefSeq ORF:** 2337 bp

**Locus ID:** 19732

**UniProt ID:** [Q61193](#)

**Cytogenetics:** 17 B1

**Gene Summary:**

Probable guanine nucleotide exchange factor. Putative effector of Ras and/or Rap. Associates with the GTP-bound form of Rap 1A and H-Ras in vitro.[UniProtKB/Swiss-Prot Function]