

Product datasheet for **MG210598**

Brsk1 (BC086636) Mouse Tagged ORF Clone

Product data:

Product Type:	Expression Plasmids
Product Name:	Brsk1 (BC086636) Mouse Tagged ORF Clone
Tag:	TurboGFP
Symbol:	Brsk1
Synonyms:	SADB, SAD-B
Mammalian Cell Selection:	Neomycin
Vector:	pCMV6-AC-GFP (PS100010)
E. coli Selection:	Ampicillin (100 ug/mL)



[View online »](#)

ORF Nucleotide
Sequence:

>MG210598 representing BC086636
Red=Cloning site Blue=ORF Green=Tags(s)

TTTTGTAATACGACTCACTATAGGGCGGCCGGAATTCGTCGACTGGATCCGGTACCGAGGAGATCTGCC
GCC**CGCATCGCC**

ATGTCGTCGGGTCCAAGGAAGGTGGCGGGGCTCCCCGCCTACCACCTCCCACACCCACACCCACACC
CACCCCAGCACGCCAATATGTGGGCCCTATCGCCTGGAGAAGACGCTGGGCAAAGGACAGACAGGTCT
AGTTAAACTTGGAGTCCACTGCATCACGGTCAGAAGGTCGCTGTCAAGATCGTGAACAGGGAGAAGCTG
TCGGAATCGGTGCTGATGAAGGTGGAGAGGAAATCGCCATCCTGAAGCTCATTGAACACCCGCACGTGC
TCAAGCTCCACGACGTCTACGAGAACAAGAAATATTTATACTTGGTTCTTGAGCACGTTTCTGGTGGTGA
GCTGTTGACTACCTGGTAAAAAAGGGAGACTGACACCCAAGGAGGCCCGGAAGTTCTTCCGCCAGATC
GTGTCAGCACTGGACTTCTGCCATAGCTACTCCATCTGTCACAGAGACTTGAAGCCAGAGAACCTGCTGT
TGGATGAGAAAAACAACATCCGCATCGCAGACTTTGGTATGGCGTCCCTGCAAGTGGGGGACAGCCTCCT
GGAGACCAGCTGCGGGTCCCCCATTACGCATGTCAGAGGTGATCAAGGGGAAAAGTATGATGGCCGC
CGGCAGACATGTGGAGCTGTGGAGTATCCTATTTGCCCTGCTTGTGGGGGCACTGCCCTTCGATGACG
ACAACCTGCGCCAGCTACTGGAGAAGGTGAAACGTGGGGTCTTCCACATGCCTCACTTCATCCCTCCAGA
CTGCCAGAGCCTCCTGAGAGGGATGATTGAAGTGGAGCCCAGAAAAGGCTCAGTCTGGAGCAAATTCAG
AAACATCCTTGGTATCTGGGCGGAAACACGAACCAGACCCTTGCTGGAGCCAGCCCAGGCCGAGAG
TAGCCATGCGTAGCCTGCCTTCCAATGGCGAGCTGGACCTGACGTTCTGGAAAGCATGGCGTCTCTGGG
CTGCTTACAGACCGCGAGCGGCTGCACAGAGAAGTGGAAAGCGAGGAGGAAAACCAAGAAAAGATGATC
TATTATTTGCTTTTGGATCGGAAAGAGCGGTATCCTAGCTGTGAAGACCAGGACCTGCCTCCTCGGAATG
ATGTTGACCCACCTCGTAAGCGTGTGGATTCCCCATGCTGAGCAGACACGGGAAACGGAGGCCAGAGCG
GAAGTCCATGGAAGTCCTAGTATCACAGATGCTGGGAGTGGTGGCTCCCCAGTGCCTACCAGACGGGCC
TTGGAGATGGCCAGCACAGTCAGAGATCCCGCAGCGTCAAGTGGAGCCTCCACTGGTCTGTCTCCAGCC
CTCTGAGCAGCCCAAGGAGTCCGGTCTTTTCTTCTCACCGGAGCCAGGCGCTGGAGATGAGGCTAGAGG
CGGAGGCTCCCCAATTCCAAAACACAGACGCTGCCTTCTCGGGGCCAGAGGTGGGGGCGCTGGAGAG
CAGCCACCACCCCAAGTCCCGTTCCACGCCCTTGCTGGACCACCAGGCTCCCCGCGCTCCTCCGGCG
GAACCCCTTGCCTCACCTCTGCACACGCTCGAGCCAGCCCTACGGGGACCCAGGAACGACGCCACC
TCCCAGCCAGGCGGTGGCGTGGGGGAGCCGCTGGAGAAGTGGCTCAACTCCATCCGCAACAGCTTC
CTGGGCTCCCCTCGTTCACCGCGCAAGATGCAGGTCCCTACCGCCGAGGAGATGTCCAGTTTGACAC
CAGAATCCTCCTGAGCTGGAAAACGCTCCTGGTTCGGGAATTCATCTCCTTGACAAAAGAAGAACAA
AATATTCCTCGTCTAAAGGACAAACCTCTCAGCAGCATCAAAGCGGACATTGTCCATGCCTTTCTGTCTG
ATCCCCAGCCTGAGTCACAGTGTACTGTACAGACCAGCTTACGGGCCGAATACAAGGCCAGCGCGGCC
CCTCCGCTTCCAGAAGCCTGTCCGCTTTCAGGTGGACATCAGCTCCTCTGAGGGTCCAGAACCCCTCACC
CCGAAGAGATGGCAGCAGTGGAGGTGGCATCTACTCAGTACCTTTACTCTATCTCCGGTCCCAGCCGT
CGGTTCAAACGTGTGGTAGAGACCATCCAGGCACAGTTGCTGAGTACTCACGACCAGCCCTCCGTGCAGG
CCTTGGCAGATGAGAAGAACGGAGCCCAGACCCGGCTGCTGGGACCCACCCGAAGCCTGCAGCCCC
ACCAGGCCGCTTGACCCTGATCTGAGTAGCTCTCCCCGCGAGGACCCCTAAGGACAAGAAGTCTCTG
GCCACCAATGGAACCCCTCTACCC

ACGCGTACGCGGCCGCTCGAG – GFP Tag – GTTTAA

Protein Sequence: >MG210598 representing BC086636
 Red=Cloning site Green=Tags(s)

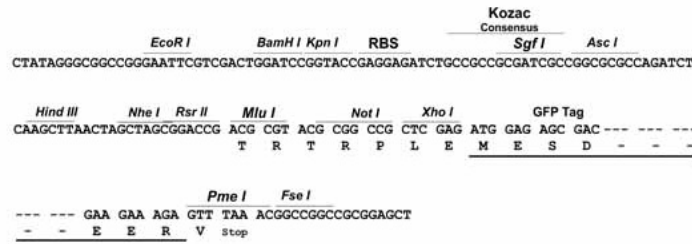
MSSGSKEGGGGSPAYHLPHPHPPQHAQYVGPYRLEKTLGKGQTGLVKLGVHCITGQKVAVKIVNREKL
 SESVLMKVEREIAILKLIEHPHVLKLDVYENKKYLYLVEHVSGGELFDYLKKGRLTPKEARKFFRQI
 VSALDFCHSYSICHRDLKPENLLLDEKNNIRIADFGMASLQVGDLSLETSCGSPHYACPEVIKGEKYDGR
 RADMWSCGVILFALLVGALPFDDNLRQLLEKVKRGVFMHPHFIPPDCQSLLRGMIEVEPEKRLSLEQIQ
 KHPWYLGKHEPDPCLEPAPGRRVAMRSLPSNGELDPDVLESMASLGCFRDRERLHREL RSEENQEKMI
 YLLLLDRKERYPSCEDQDLPPRNDVPPRKRVDSPMLSRHGKRRPERKSMEVLSITDAGSGGSPVPTRRR
 LEMAHQSQRSRVSGASTGLSSSPLSSPRSPVFSFPEPGAGDEARGGGSPTSKTQTLPSRGPRGGGAGE
 QPPPPSARSTPLPGPPGSPRSSGGTPLHSLHTPRASPTGTPGTTPPPSPGGVGGAAWRSRLNSIRNSF
 LGSPRFHRRKMVPTAEEMSSLTPESPELAKRSWFGNFIISLDKEEQIFLVLDKDKPLSSIKADIVHAFLS
 IPSLSHSVLSQTSFRAEYKASGGPSVFQKPVRFQVDIISSEGEPEPSRRDGSSGGGIYSVFTLISGPSR
 RFKRIVETIQAQLLSTHDQPSVQALADEKNGAQTTPAGTPPRSLQPPGRSDPDLSSSPRRGPPKDKLL
 ATNGTLP

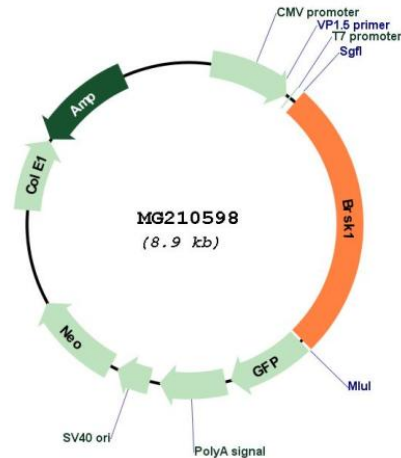
TRTRPLE - GFP Tag - V

Restriction Sites: SgfI-MluI

Cloning Scheme:

Cloning sites used for ORF Shuttling:



Plasmid Map:


ACCN: BC086636

ORF Size: 2336 bp

OTI Disclaimer: The molecular sequence of this clone aligns with the gene accession number as a point of reference only. However, individual transcript sequences of the same gene can differ through naturally occurring variations (e.g. polymorphisms), each with its own valid existence. This clone is substantially in agreement with the reference, but a complete review of all prevailing variants is recommended prior to use. [More info](#)

OTI Annotation: This clone was engineered to express the complete ORF with an expression tag. Expression varies depending on the nature of the gene.

Components: The ORF clone is ion-exchange column purified and shipped in a 2D barcoded Matrix tube containing 10ug of transfection-ready, dried plasmid DNA (reconstitute with 100 ul of water).

Reconstitution Method:

1. Centrifuge at 5,000xg for 5min.
2. Carefully open the tube and add 100ul of sterile water to dissolve the DNA.
3. Close the tube and incubate for 10 minutes at room temperature.
4. Briefly vortex the tube and then do a quick spin (less than 5000xg) to concentrate the liquid at the bottom.
5. Store the suspended plasmid at -20°C. The DNA is stable for at least one year from date of shipping when stored at -20°C.

RefSeq: [BC086636](#), [AAH86636](#)

RefSeq Size: 3013 bp

RefSeq ORF: 2336 bp

Locus ID: 381979

Cytogenetics: 7 A1

Gene Summary:

Serine/threonine-protein kinase that plays a key role in polarization of neurons and centrosome duplication. Phosphorylates CDC25B, CDC25C, MAPT/TAU, RIMS1, TUBG1, TUBG2 and WEE1. Following phosphorylation and activation by STK11/LKB1, acts as a key regulator of polarization of cortical neurons, probably by mediating phosphorylation of microtubule-associated proteins such as MAPT/TAU at 'Thr-504' and 'Ser-554'. Also regulates neuron polarization by mediating phosphorylation of WEE1 at 'Ser-642' in post-mitotic neurons, leading to down-regulate WEE1 activity in polarized neurons. In neurons, localizes to synaptic vesicles and plays a role in neurotransmitter release, possibly by phosphorylating RIMS1. Also acts as a positive regulator of centrosome duplication by mediating phosphorylation of gamma-tubulin (TUBG1 and TUBG2) at 'Ser-131', leading to translocation of gamma-tubulin and its associated proteins to the centrosome. Involved in the UV-induced DNA damage checkpoint response, probably by inhibiting CDK1 activity through phosphorylation and activation of WEE1, and inhibition of CDC25B and CDC25C.[UniProtKB/Swiss-Prot Function]