

## Product datasheet for **MG210594**

### Sema4f (NM\_011350) Mouse Tagged ORF Clone

#### Product data:

Product Type:	Expression Plasmids
Product Name:	Sema4f (NM_011350) Mouse Tagged ORF Clone
Tag:	TurboGFP
Symbol:	Sema4f
Synonyms:	Sema W
Mammalian Cell Selection:	Neomycin
Vector:	pCMV6-AC-GFP (PS100010)
E. coli Selection:	Ampicillin (100 ug/mL)



[View online »](#)

ORF Nucleotide  
Sequence:

>MG210594 representing NM\_011350  
 Red=Cloning site Blue=ORF Green=Tags(s)

TTTTGTAATACGACTCACTATAGGGCGGCCGGGAATTCGTCGACTGGATCCGGTACCGAGGAGATCTGCC  
 GCC**CGGATCGCC**

ATGCTGGCCAGGGCCGAGCGGCCCGCCGGCCCGCCGGCCCTCCGGTCTCTCTTCCCGCCGCGT  
 CGTCGCTGCTGCTGCTGCTGCTGGCGATGCTGAGCGCCCGGTGTGCGGCCGCGTCCCCCGCTCGGTGCC  
 CAGAACCTCGCTGCCATCTCCGAGGCTGACTCTATCTCACCCGGTTTGCGGCCCTCATACTGACAAT  
 TACTCTGCTCTCCTGGTGGATCTGCTTCTCACACTTTACGTCGGTGCACGGGACAGCATCTTCGCTT  
 TAACCCTGCCCTTCTCTGGGAAAAGCCTCGAAGGATCGACTGGATGGTGCCCGAGACTCACAGACAGAA  
 CTGTAGGAAGAAAGGCAAGAAAGAGGACGAATGCACAATTTTATCCAGATTCTCGCCATTGCCAATGCC  
 TCTCACCTCTCACGTGTGCACCTTCGCTTTTGATCCGAAGTGCGGGGTATTGATGTGCCAGTTTCC  
 AGCAGGTTGAAAGACTTGAGAGTGGCCGGGGAAATGCCTTTTGGAGCCAGCTCAACGGTACGACGCTGT  
 AATGGCTGGGGGCGTCTTACACCGCCACTGTGAAAACTTCTGGGGACAGAGCCGATTATCTCCCGA  
 GCTGTGGGTGAGCTGAGGACTGGATTCGAACAGAGACCTTGTCATCCTGGCTTAAATGCCCCAGCCTTTG  
 TCGCAGCTATGGTCTGAGCCCGCTGAGTGGGGGATGAAGATGGAGACGATGAAATCTCTTTTTCTT  
 CACGGAGACCTCCCGAGTCTTGGACTCATATGAGCGCATCAAGGTCCCACGAGTGGCCCGTGTGTGTGCG  
 GGGGACCTTGGGGGCCGGAAGACCTTCAGCAGAGATGGACGACGTTTCTAAAGGCTGACCTGCTGTGTC  
 CAGGGCCCGAGCATGGAAGGGCTCGGGGGTCTGCAGGATATGACAGAGCTTCGACCTCAGCCTGGCGC  
 GGGGACCCCTCTTTTATGGCATCTTTCTCCAGTGGGAAGGAGCCGCCATTTCTGCTGTGTGTGCC  
 TTCCGACCCCAAGACATCCGGCAGTGTGAATGGTCCCTTTAGAGAGCTAAAACATGACTGCAACAGGG  
 GACTACTGTGATGGACAACGAGGTGCCCCAGCCAGACCTGGAGAGTGCATACCAACAACATGAAGTT  
 CCAGCAGTTTGGATCCTCACTCTCCCTGCCAGACCGTGTGCTCACCTTTATCAGAGACCACCCGTCATG  
 GACAGGCCGTGTTTCCAGCTGATGGCCGCCCTGCTGGTCACTACGGATACAGCCTATCTCAGAGTTG  
 TGGCTCACCGGTGACCAGCCTCTCAGGAAAAGAAATGATGTGCTTACCTGGGGACAGAGGATGGGCA  
 CCTCCATCGGGTGTGCGCATCGGAGCTCAGCTCAGTGTCTGGAGGATCTGGCCTTGTCCCGAAACA  
 CAGCCGGTTGAAAGCATGAAATGTACCATGATTGGCTTCTGGTGGGCTCCATACTGAGGTGACACAAG  
 TGAACACCAGCAACTGTGGCCGTCTCCAGAGCTGCTCAGAATGTATCCTGGCCAGGATCCCGTGTGTGC  
 CTGGAGCTTCCGGCTCGATGCTTGTGTGCCCATGCAGGCGAGCACCGTGGGATGGTTCAAGACATAGAG  
 TCAGCAGATGTCTTTTGTGTCCAAAAGAACCTGGAGAACATCCGGTAGTGTGTTGAAGTTCCAGTGG  
 CTACGGTGGGCCAGTGGTCTGCGCTGCTCCCCAGTTCTGCCTGGGCATCCTGTGTGTGGCACCAGCC  
 CAGTGGAGTGACTTCGCTCACCCACGAAGGGATGGGCTAGAGGTGGTGGTGACCCAGGGGCCATGGGG  
 GCTTATGCTTGGCAGTGTGAGGAGGTGGAGCCCGCCGTGTGGTGGCTGCTTATAGCTTGGTGTGGGGCA  
 GCCAGAGGGGGCCGCAAACCGGGCCACACCGTTGTGGGGGCTGGGCTGGTTGGCTTTTCTGGGTGT  
 TCTAGCAGCATCTCACTCTCCTGATTGGTCGCGCTCAGCAGCGCGGCGACAGAGGGAGCTTCTA  
 GCTAGAGACAAGTGGGCTTAGATCTGGGGCTCCACCTTCTGGGACCACAAGCTATAGCCAAGACCCTC  
 CCTCTCCTTACCTGAAGATGAACGGCTGCCCTGGCCCTGGGTAAAGCGGGCAGTGGTTTTGGTGGCTT  
 CCTCCACCCTTCTGCTGGATTCTTGGCCGAGCCAGCCACATCCGGTCACTGGGGCTCCTCTGGCC  
 ACGTGCGATGAGACGTCTATC

**ACGCGT**ACGCGGCCGCTCGAG - GFP Tag - GTTTAA

Protein Sequence: >MG210594 representing NM\_011350  
 Red=Cloning site Green=Tags(s)

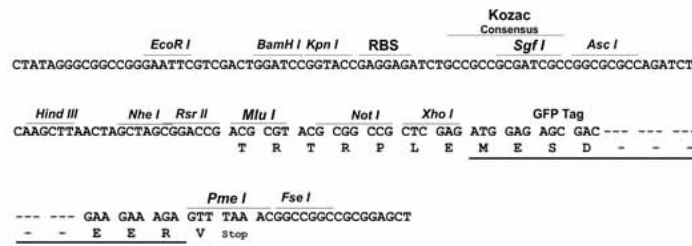
MLARAERPRGPRPPVSLFPPSSLLLLLLAMLSAPVCGRVPRSPRTSLPISEADSYLTRFAAPHTYN  
 YSALLVDPASHTLYVGARDSIFALTLPFSGEKPRRIDWMPETHRQNCRKKGKKEDECHNFIQILAIANA  
 SHLLTCGTFAFDPKCGVIDVSSFQQVERLESGRGKCPFEPQRSAAVMAGGVLATVKNFLGTPEIISR  
 AVGRAEDWIRTETLSSWLNAPAFVAAAMVLSAEWGDDEGDDEIFFFFTTETSRVLDSYERIKVPRVARVCA  
 GDLGGRKTLQQRWTTFLKADLLCPGPEHGRASGVLQDMTELRPQPGAGTPLFYGIFSSQWEGAAISAVCA  
 FRPQDIRAVLNGPFRELKHCNRGLPVMNEVPQPRPGECITNNMKFQQFGSSLSLPDRVLTFRDHPML  
 DRPVFPADGRPLLVTDDTAYLRVVAHRVTSLSGKEYDVLVLGTEDGHLHRAVRIGAQLSVLEDLALFPET  
 QPVESMKLYHDWLLVGSHTVTVNTSNCGRQLQSCSECILAQDPVCAWSFRLDACVAHAGEHRGMVQDIE  
 SADVSSSLCPKEGHPVVFEVPVATVGHVVLPCSPSSAWASCVWHQPSGVTSLTPRRDGLVVVTPGAMG  
 AYACECQEGGAARVVAAYSLVWGSQRGPANRAHTVVGAGLVGFLGVLAASLTLLLIGRRQRRRQRELL  
 ARDKVGLDLGAPPSGTTSYSQDPPSPSPEDERLPLALGKRGSGFGGFPFLLDSCPSAHIRLTGAPLA  
 TCDETSI

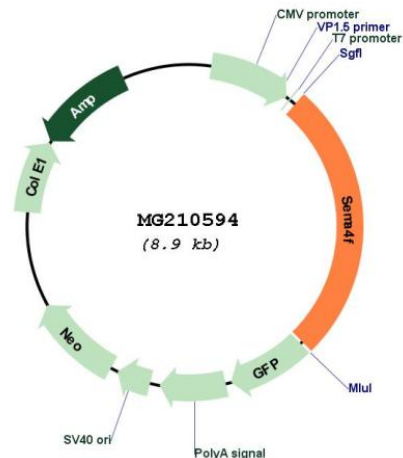
TRTRPLE - GFP Tag - V

Restriction Sites: SgfI-MluI

Cloning Scheme:

Cloning sites used for ORF Shuttling:



**Plasmid Map:**


**ACCN:** NM\_011350

**ORF Size:** 2331 bp

**OTI Disclaimer:** Due to the inherent nature of this plasmid, standard methods to replicate additional amounts of DNA in *E. coli* are highly likely to result in mutations and/or rearrangements. Therefore, OriGene does not guarantee the capability to replicate this plasmid DNA. Additional amounts of DNA can be purchased from OriGene with batch-specific, full-sequence verification at a reduced cost. Please contact our customer care team at [custsupport@origene.com](mailto:custsupport@origene.com) or by calling 301.340.3188 option 3 for pricing and delivery.

The molecular sequence of this clone aligns with the gene accession number as a point of reference only. However, individual transcript sequences of the same gene can differ through naturally occurring variations (e.g. polymorphisms), each with its own valid existence. This clone is substantially in agreement with the reference, but a complete review of all prevailing variants is recommended prior to use. [More info](#)

**OTI Annotation:** This clone was engineered to express the complete ORF with an expression tag. Expression varies depending on the nature of the gene.

**Components:** The ORF clone is ion-exchange column purified and shipped in a 2D barcoded Matrix tube containing 10ug of transfection-ready, dried plasmid DNA (reconstitute with 100 ul of water).

**Reconstitution Method:**

1. Centrifuge at 5,000xg for 5min.
2. Carefully open the tube and add 100ul of sterile water to dissolve the DNA.
3. Close the tube and incubate for 10 minutes at room temperature.
4. Briefly vortex the tube and then do a quick spin (less than 5000xg) to concentrate the liquid at the bottom.
5. Store the suspended plasmid at -20°C. The DNA is stable for at least one year from date of shipping when stored at -20°C.

RefSeq: [NM\\_011350.4](#), [NP\\_035480.3](#)

RefSeq Size: 4067 bp

RefSeq ORF: 2334 bp

Locus ID: 20355

UniProt ID: [Q9Z123](#)

Cytogenetics: 6 35.94 cM

**Gene Summary:** This gene encodes a member of semaphorin family of membrane-bound and secreted proteins that are involved in guiding axonal growth. The encoded protein is a transmembrane protein localized to the glutamatergic synapses via its association with a synapse-associated scaffolding protein. In oligodendrocyte precursor cells, the encoded protein contributes to the outward migration and differentiation. Alternative splicing results in multiple transcript variants encoding different isoforms. [provided by RefSeq, May 2015]