

Product datasheet for **MG210592**

Sema3e (NM_011348) Mouse Tagged ORF Clone

Product data:

Product Type:	Expression Plasmids
Product Name:	Sema3e (NM_011348) Mouse Tagged ORF Clone
Tag:	TurboGFP
Symbol:	Sema3e
Synonyms:	6430702L12; AA408817; mKIAA0331; Semah
Mammalian Cell Selection:	Neomycin
Vector:	pCMV6-AC-GFP (PS100010)
E. coli Selection:	Ampicillin (100 ug/mL)



[View online »](#)

ORF Nucleotide
Sequence:

>MG210592 representing NM_011348
Red=Cloning site Blue=ORF Green=Tags(s)

TTTTGTAATACGACTCACTATAGGGCGGCCGGAATTCGTCGACTGGATCCGGTACCGAGGAGATCTGCC
GCC**CGGATCGCC**

ATGGCACCGGCCGACACATCCTCACCTTGTCTGCTCTGGGGTACCTGCTGGAACCTGGACCCAGGTC
ACTCCGCGAACCCCTCCTACCCAGGCTACGCCTGTACATAAAGAACTTTGGAACTGAATAGGACTTC
AATATTTCAAAGCCCCCTTGATTCTTGTATCTCCATACAAATGCTGCTGGATGAGTATCAAGAACGGCTC
TTTGTGGGAGGCAGAGACCTTGTCTATTCCCTGAACTTGGAAACGAGTCAGTGACGGCTACAGAGAGAT
ACTGGCCGAGCACAGCAGTAAAGGTAGAAGAATGCATAATGAAAGGAAAAGACGCAAATGAGTGTGCCAA
TTATATCCGGTTTTGCATCACTACAACAGGACACCTTCTGACCTGTGCTACTGGAGCTTTTGTATCCA
CACTGTGCCTTCATCAGAGTCGGGCACCATTAGAGGAACCCCTGTTTACCTGGAGTCACACAGATCTG
AGAGAGGAAGGGCAGATGTCTTTGACCCCACTCCTCTTTGTGCCACGCTAGTTGGGAATGAGCT
GTTTGTGGACTCTACAGTGACTATTGGGGCAGAGACTCGGCATCTTCCGAGCATGGGAAGTTAGGC
CATATTCGCACTGAGCATGACGATGAGCGGCTCCTGAAAGAACCAAAATTTGTAGGTTTCATATATGATTC
CTGATAACGAAGACCGAGATGACAACAAAATGACTTTTTCTTTACTGAGAAGGCGCTGGAGGCGGAGAA
CAACGCCACACGATCTACACCCGAGTGGGGCGGCTGTGCGTGAATGACATGGGAGGACAGAGAATCCTG
GTGAACAAGTGGAGCACTTTCTTAAAGCGCGGCTGGTTTGTCTCAGTGCCGGGAATGAATGGAAATCGACA
CATACTTTGACGAACTAGAGGATGTGTTTTACTGCCGACCAGAGATCCTAAGAATCCAGTGATATTTGG
GAAGCCTTTAATGGCCCATATGCTCATAAAGAAGGCCCTGAATACCACTGGTCACTATATGAAGGAAAAG
TCCCCTACCAAGGCCTGGTTCTGTGCCAGCAAAGTAAACGGAGGCAAGTATGGAACCAACCAAGATTA
CCCGATGACGCCATCCGGTTCGCAAGGATGCATCCTCTAATGTATCAGCCCATAAAACCTGTTTCATAAA
AAACCAATACTGTTAAAAACAGATGAAAAATACAACCTGAGGCAACTTGCCTGGATCGGGTGAAGCGG
AGGATGGCCAGTATGACGCTTATTTATTGGGACAGACACAGGAATTGTGCTGAAAGTAATCACAATTTA
CAACCAAGAAACAGAGTGGATGGAGGAAGTCATTCTAGAGGAACTTCAAATATTCAGGATCCAGCCCT
ATCATTCTATGGAAATTTCTTCAAAGAGACAACAGCTTTACATTGGATCAGCCTCTGCTGTGCCACAAG
TCAGATCCATCACTGCGACATGTATGGCAGTGCTTGTGCTGACTGCTGCCTGGCTCGAGACCCGACTG
TGCTGGGATGGCATATCCTGCTCCAGGTAACCAACAGGTGCACACGCAAAGAGGAGGTTCCGCAGG
CAGGACGTTCCGATGGCAACGCCGCCAACAGTGCTTTGGACAGCAATTTGTTGGAGACGCGTTGGACA
GGACTGAAGAGAGGCTGGCTTATGGCATAGAGAGCAACAGTACTCTGTTGGAATGCACCCCGCATCACT
ACAAGCAAAAGTCATCTGGTTTGTACAGAAGGGACGCGCAGTAAGAAAAGAGAGGTGAAGACGGATGAC
AGAGTTGTCAAGATGGACTTGGGCTTGCTTCTCAGAGTACGCAAGTCAGATGCAGGGACCTATTTTT
GCCAGACAGTAGAACACAATTTTGTCCATACTGTGCGTAAAAATCACCTTGGAGGTGGTCGAAGAGCATAA
AGTGGAGGGCATGTTTCATAAGGACCATGAAGAGGAAAGACATCACAAGATGCCCTGCCCTCCCTAAGC
GGTATGTCTCAGGGGACAAAACCGTGGTACAAGGAATCTTGCAGCTGATTGGCTACAGCAACTCCAGA
GAGTGAAGAATACTGCGAAAAGGTGTGGTGTACAGATAAGAAGAGGAAAAAGCTTAAAAATGTCTCCCTC
CAAGTGAAGTATGCCAACCCCAAGAAAAGAGGCTTCGCTCTAAGCTGAGCACTTCCGCTGCCAGG
CACACGCTGCTCTCC

AGCGGACCGACGCGTACGCGGCCGCTCGAG - GFP Tag - GTTTAA

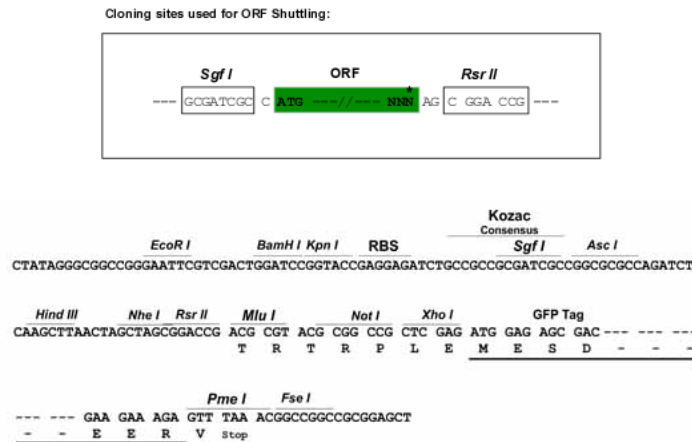
Protein Sequence: >MG210592 representing NM_011348
 Red=Cloning site Green=Tags(s)

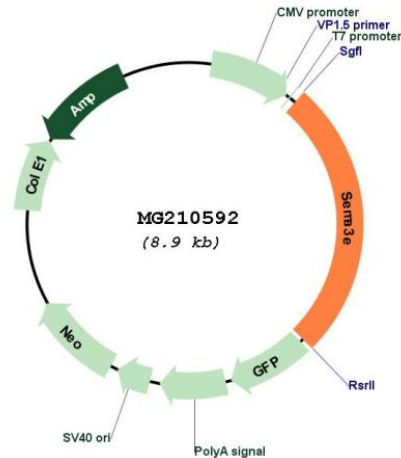
MAPAGHILTLLLWGHLELWTPGHSANPSYPRRLSHKELLELNRTSIFQSPGLFDLHTMLLDEYQERL
 FVGGKDLVYSLNLERVSDGYREIYWPSTAVKVEECIMKGDANECANYIRVLHHYNRTHLLTCATGAFDP
 HCAFIRVGHHSSEPLFHLESHRSEGRGRCPFDPNSSFVSTLVGNELFAGLYSDYWGRDSAIFRSMGKLG
 HIRTEHDDERLLKEPKFVGSYMIIPDNERDDNKMYFFFTEKALEAENNAHTIYTRVGRLCVNDMGGQRIL
 VNKWSTFLKARLVCSVPGMNGIDTYFDELEDVFLLPTRDPKPNVIFGLFNNTTSNIFRGHAVCVYHMSSIR
 EAFNGPYAHKEGPEYHWSLYEGKVPYPRPGSCASKVNGGKYGTTKDYPDDAIRFARMHPLMYQPIKPVHK
 KPILVKTDGKYNLRQLAVDRVEAEDGQYDVLFIGTDTGIVLKVITIYNQETEWMEEVILEELQIFKDPAP
 IISMEISSKRQQLYIGSASAVAQVRFHHCMDYGSACADCCCLARDPYCAWDGISCSSRYPTGAHAKRRFR
 QDVRHGNAAQCCFGQQFVGDALDRTEERLAYGIESNSTLLECTPRSLQAKVIWFVQKGRDVRKEEVKTD
 RVVKMDLGLLFLRVRKSDAGTYFCQTVENHFVHTVRKITLEVVEEHKVEGMFHKDHEERHHKMPCPPLS
 GMSQGTKPWYKEFLQLIGYSNFQRVEEYCEKVWCTDKKRKLLKMSPSKWKYANPQEKRLRSKAHFRLPR
 HTLLS

SGPTRRRLE - GFP Tag - V

Restriction Sites: SgfI-RsrII

Cloning Scheme:



Plasmid Map:


ACCN: NM_011348

ORF Size: 2325 bp

OTI Disclaimer: The molecular sequence of this clone aligns with the gene accession number as a point of reference only. However, individual transcript sequences of the same gene can differ through naturally occurring variations (e.g. polymorphisms), each with its own valid existence. This clone is substantially in agreement with the reference, but a complete review of all prevailing variants is recommended prior to use. [More info](#)

OTI Annotation: This clone was engineered to express the complete ORF with an expression tag. Expression varies depending on the nature of the gene.

Components: The ORF clone is ion-exchange column purified and shipped in a 2D barcoded Matrix tube containing 10ug of transfection-ready, dried plasmid DNA (reconstitute with 100 ul of water).

Reconstitution Method:

1. Centrifuge at 5,000xg for 5min.
2. Carefully open the tube and add 100ul of sterile water to dissolve the DNA.
3. Close the tube and incubate for 10 minutes at room temperature.
4. Briefly vortex the tube and then do a quick spin (less than 5000xg) to concentrate the liquid at the bottom.
5. Store the suspended plasmid at -20°C. The DNA is stable for at least one year from date of shipping when stored at -20°C.

RefSeq: [NM_011348.2](#), [NP_035478.2](#)

RefSeq Size: 6877 bp

RefSeq ORF: 2328 bp

Locus ID: 20349

UniProt ID: [P70275](#)

Cytogenetics: 5 A1

Gene Summary:

Plays an important role in signaling via the cell surface receptor PLXND1. Mediates reorganization of the actin cytoskeleton, leading to the retraction of cell projections. Promotes focal adhesion disassembly and inhibits adhesion of endothelial cells to the extracellular matrix. Regulates angiogenesis, both during embryogenesis and after birth. Can down-regulate sprouting angiogenesis. Required for normal vascular patterning during embryogenesis. Plays an important role in ensuring the specificity of synapse formation. [UniProtKB/Swiss-Prot Function]