

Product datasheet for **MG210587**

Maged1 (NM_019791) Mouse Tagged ORF Clone

Product data:

Product Type:	Expression Plasmids
Product Name:	Maged1 (NM_019791) Mouse Tagged ORF Clone
Tag:	TurboGFP
Symbol:	Maged1
Synonyms:	2810433C11Rik; 5430405L04Rik; Dlixin; Dlxin-1; Dlxin1; DXBwg1492e; MAGE-D1; mFLJ00163; NRAGE
Mammalian Cell Selection:	Neomycin
Vector:	pCMV6-AC-GFP (PS100010)
E. coli Selection:	Ampicillin (100 ug/mL)



[View online »](#)

ORF Nucleotide Sequence:

>MG210587 representing NM_019791
 Red=Cloning site Blue=ORF Green=Tags(s)

TTTTGTAATACGACTCACTATAGGGCGGCCGGGAATTCGTCGACTGGATCCGGTACCGAGGAGATCTGCC
 GCC**CGATCGCC**

ATGGCTCAGAAACCGACGGCGGTGCAGGCCTCCGCGCTTCCAGGCTGAGGCCTCTGTTGAAGACAGCG
 CCTTGCTTGTGCAGACCTTGATGGAAGCCATCCAGATCTCCGAGGCTCCGCCACCAGCCAGGCCACAGC
 AGCTGCCAGTGGGCCAAATGCTAGTCCCCAGAGTTCACAGCCCCAACTGCCAATGAGAAGGCTGATACT
 GAGGTTTCAGCAGCTGCTGCCAGGCCTAAGACAGGCTTTAAGGCCAGAATGCCACCACAAAGGGGCCAA
 ATGATTACTCTCAGGCACGTAATGCCAAGGAGATGCCAAGAATCAGTCTAAGGCGGCCTTTAAGTCACA
 GAATGGCACCCCTAAAGGTTACATGCTGCCTGACTTTCCAGGCAGCACCCACAGGCAAATCAGCT
 AAAAAGTCTGAAATGGCCTTTAAGGGTCAGAATAGCACTAAGGCTGGCCCCGGTACCACCTACAATTTCC
 CTCAGTCTCCAGTGCCAATGAGATGACCAACAACCAGCCTAAGACAGCTAAGGCTTGAATGACACTAC
 TAAGTCCCTGGAGCTGATGCCAGACCAGAATGTAATCAGGCCAAAATGGCTGACGTAGGGACCAGC
 GCAGGTATCTCTGAAGCTGATGGTGCAGCAGCCAGACATCAGCAGATGGCTCCCAGACTCAGAATGG
 AGTCCCGACTATAATTCGGGGCAAGAGGACCCGCAAGGTTAATAACTTGAATGTGGAAGAGAACAACAG
 TGGGGATCAAAGGCGTGCCTCACTGGCCTCAGGGAACGGAGGTCTGCTCCGGTTCAGTGACCACTCAG
 CAGAACCACCTGGAGCACCCCTAATGTGGTGTGGCAGACCACTGGCTTGGCAGAACCACATCAGGCT
 GGCAAAACCAGACAGCCAGGCAGACCCACCAGCAGCAGTCCAGAGTCCCCAGCTAGGCAGACACCATC
 AGCTTGGCAGAACCAGTTGCATGGCAGAATCCAGTGTCTGGCCTAACCAGTGTCTGGCAGAATCCA
 GTGATCTGGCCAAACCCATTGTCTGGCCTGGCCCAATGTCTGGCCAAACCCAAATGGCCTGGCAGAGTA
 CACCTGGATGGCAGAGCCACCCAGCTGGCAGGCTCCACCTAGTTGGCAGAGCCCTCAAGATTGGCAGGG
 CCCTCCAGATTGGCAGGTACCACCTGACTGGTCAATGCCTCCTGACTGGTCCCTTTCCCTCCGACTGGCCT
 TTTCCACCTGACTGGATCCCGCGACTGGCCAATCCACCTGACTGGCAGAACTTACGACCCTCACCTA
 ATCTGAGATCCTCCTCAACTCTCGTGCCTCACAGAACCAGGTCCTCCACAGCCCCGAGATGTGGCCCT
 TCTTCAGGAAAGAGCAAATAAGTTGGTCAAGTACCTGATGCTTAAAGACTACACGAAGGTGCCCATCAAG
 CGCTCAGAAATGCTGAGGGATATCATCCGAGAATACACTGATGTCTATCCAGAAATCATTGAGCGCGCAT
 GCTTTGCTCCTGGAGAAGAAGTTTGAATCCAGCTGAAGGAAATCGACAAAGAAGAGCATCTGTATATTCT
 CATCAGTACCCCTGAGTCCCTGGCTGGCATACTGGGAACGACCAAGACACCCGAAGCTTGGCCTCCTC
 TTAGTGATTCTGGCATTATCTTCATGAATGGCAACCGTCCACCGAGGCCGTCTCTGGGAAGCACTGC
 GCAAGATGGGACTACGTCTGGGTGAGACATCCCTCCTTGGTGACCTGAGAAAACCTTCTACTTACGA
 GTTTGTAAGCAGAAATACCTGGACTACAGACGAGTGCCCAACAGCAACCCTCCTGAGTATGAGTTCCTC
 TGGGGCTCCGCTCCTACCATGAGACTAGCAAGATGAAAGTGCTGAGATTCATTGAGAGGTTTCAGAAGA
 GAGACCTCGTGACTGGACTGCACAGTTCATGGAAGCTGCAGATGAAGCCTTGGATGCTCTGGATGCTGC
 TGCAGCTGAGGCAGAGGCCCGGGCTGAAGCGAGAAACCGCATGGGAATGGAGATGAGGCTGTGTCTGGT
 CCCTGGAGCTGGGATGACATTGAGTTTGGCTGCTGACCTGGGATGAGGAAGGAGATTTGGAGATCCTT
 GGTCCAGGATCCCCTTACCTTCTGGCCAGATACCACCAGAATGCCCGCTCCAGGTTTCCCAGGCCTT
 TACTGGCCCCATATTGGCCCCAGCGGTACTGCCACCGCCAACTTCGCCGCCAACTTCGGTGCCATTGGC
 TTCTTCTGGGTTGAG

ACGCGTACGCGGCCGCTCGAG – GFP Tag – GTTTAA

Protein Sequence: >MG210587 representing NM_019791
 Red=Cloning site Green=Tags(s)

```

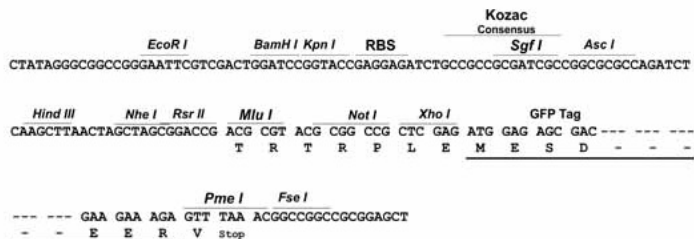
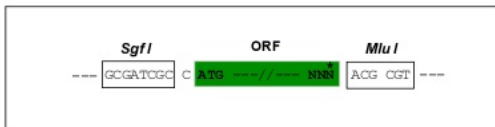
MAQKPDGGAGLRGFQAEASVEDSALLVQTLMEAIQISEAPPTSQATAAASGPNASPQSSQPPTANEKADT
EVSAAAARPKTGFKAQNATTKGPNQDYSQARNAKEMPKNQSKAAFKSQNGTPKGSAAASDF SQAAPTGKSA
KKSEMAFKGQNSTKAGPGTTYNFQSPSANEMTNNQPKTAKAWNDTTKVPGADAQTQNVNQAKMADVGTG
AGISEADGAAAQTSADGSQTQNMESRTIIRGKTRKVNLLNVEENNSGDQRRASLASGNWRSAPVPVTTQ
QNPPGAPPNVVWQTPLAWQNPQSGWQNTARQTTPAARQSPPARQTPSAWQNPVAVWQNPVIWPNPVIWQNP
VIWPNPVIWVPGPIVWPNPMAWQSTPGWQSPPSWQAPPSWQSPQDWQGPDPWQVPPDWQSMPPDWSFSDWP
FPPDWIPADWPIPPDWQNLRSPNLRSSNSRASQNGPPQPRDVALLQERANKLVKYLMLKDYTKVPIK
RSEMLRDIIREYTDVYPEIIERACFVLEKKFGIQLKEIDKEEHL YILISTPESLAGILGTTKDTPKLGLL
LVILGIIFMNGNRATEAVLWEALRKMGLRPGVRHPLLGDRLKLLTYEFVKQKYLDYRRVPNSNPPEYEF
WGLRSYHETSKMKVLRFIAEVQKRDPRDWT AQFMEAADEALDALDAAAAEAEARAEARNRMGIGDEAVSG
PWSWDDIEFELLTWDEEGDFGDPWSRIPFTFWARYHQNARSRFQAFTGPIIGPSGTATANFAANFGAIG
FFWVE
  
```

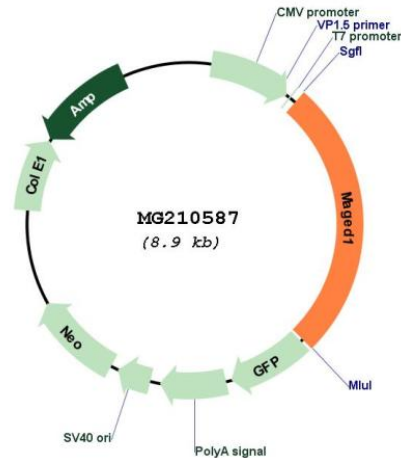
TRTRPLE - GFP Tag - V

Restriction Sites: SgfI-MluI

Cloning Scheme:

Cloning sites used for ORF Shutting:



Plasmid Map:


ACCN: NM_019791

ORF Size: 2325 bp

OTI Disclaimer: The molecular sequence of this clone aligns with the gene accession number as a point of reference only. However, individual transcript sequences of the same gene can differ through naturally occurring variations (e.g. polymorphisms), each with its own valid existence. This clone is substantially in agreement with the reference, but a complete review of all prevailing variants is recommended prior to use. [More info](#)

OTI Annotation: This clone was engineered to express the complete ORF with an expression tag. Expression varies depending on the nature of the gene.

Components: The ORF clone is ion-exchange column purified and shipped in a 2D barcoded Matrix tube containing 10ug of transfection-ready, dried plasmid DNA (reconstitute with 100 ul of water).

Reconstitution Method:

1. Centrifuge at 5,000xg for 5min.
2. Carefully open the tube and add 100ul of sterile water to dissolve the DNA.
3. Close the tube and incubate for 10 minutes at room temperature.
4. Briefly vortex the tube and then do a quick spin (less than 5000xg) to concentrate the liquid at the bottom.
5. Store the suspended plasmid at -20°C. The DNA is stable for at least one year from date of shipping when stored at -20°C.

RefSeq: [NM_019791.2](#), [NP_062765.1](#)

RefSeq Size: 2752 bp

RefSeq ORF: 2328 bp

Locus ID: 94275

UniProt ID: [Q9QYH6](#)

Cytogenetics: X 41.56 cM

Gene Summary:

Involved in the apoptotic response after nerve growth factor (NGF) binding in neuronal cells. Inhibits cell cycle progression, and facilitates NGFR-mediated apoptosis. May act as a regulator of the function of DLX family members. May enhance ubiquitin ligase activity of RING-type zinc finger-containing E3 ubiquitin-protein ligases. Proposed to act through recruitment and/or stabilization of the Ubl-conjugating enzyme (E2) at the E3:substrate complex. Plays a role in the circadian rhythm regulation. May act as RORA coregulator, modulating the expression of core clock genes such as ARNTL/BMAL1 and NFIL3, induced, or NR1D1, repressed.[UniProtKB/Swiss-Prot Function]