

Product datasheet for **MG210577**

Ecel1 (NM_021306) Mouse Tagged ORF Clone

Product data:

Product Type:	Expression Plasmids
Product Name:	Ecel1 (NM_021306) Mouse Tagged ORF Clone
Tag:	TurboGFP
Symbol:	Ecel1
Synonyms:	DINE; xce
Mammalian Cell Selection:	Neomycin
Vector:	pCMV6-AC-GFP (PS100010)
E. coli Selection:	Ampicillin (100 ug/mL)



[View online »](#)

ORF Nucleotide
Sequence:

>MG210577 representing NM_021306
 Red=Cloning site Blue=ORF Green=Tags(s)

TTTTGTAATACGACTCACTATAGGGCGGCCGGAATTCGTCGACTGGATCCGGTACCGAGGAGATCTGCC
 GCC**CGCATCGCC**

ATGGAGGCCCGTATTCCATGACAGCGCACTACGACGAGTTCCAGGAAGTCAAGTATGTGAGCCGGTGTG
 GCACCGGGGGCGCTCGAGGGACCTCACTGCCTCCAGGCTTCCCGAGGGGCTCAGGGCGCAGTGCTAGCGG
 GTCCAGGTCTGGGCTGCCCGCTGGAATCGACGCGAGGTGTGCCTGCTGTGCGGGTTGGTGTTCGTCGCC
 GGCTCTGCGCCATCCTGGCGGCCATGCTGGCGCTCAAATACCTGGGCCCGGAGCGCGGGCGGTGGCG
 GAGCCTGTCCCGAGGGCTGCCCGAGCGCAAGGCCTTTGCACGCGCCGCCGCTTTCTGTCTGCCAACCT
 GGACGCCAGCATCGACCCGTGCCAGGACTTCTACTCGTTCGCGTGCAGGAGCTGGCTGCGGCGCCACGCT
 ATCCCGACGACAAGCTCACCTACGGCACGATCGCGGCCATCGGAGAGCAGAACGAGGAGCGTCTGCGGC
 GCCTGTGGCGAGACCCACGGAGGCCCGCGCGCTGCGCAGCGCAAGGTGCGCGCTTCTCCGCTC
 GTCCCTCGACATCGCGGAGATCGAGAGGCTCGGGCCGCGCCCATGCTCGAGGTCATCGAGGACTGCGGC
 GGCTGGGACCTGGGCGGCGCGCCGATCGCCCCGGGGCGGCTCGCTGGGACCTCAACCGACTGCTGTACA
 AGGCACAGGGTGTGTACAGCGCGGCCGCTCTTCTCGCTTACAGTCAGCCTGGACGACAGGAACCTCCTC
 GCGCTACGTATCCGATTGACCAGGATGGGCTCACCTGCCAGAGAGAACCTGTACCTAGCTCAAGAC
 GAGGAGAGTGAGAAGATCTTGGCTGCATACAGGGTGTTCATGCAGCGTCTACTCAGACTACTGGGAGCGG
 ACGCTGTGGAGCAGAAGGCGCAGGAAATCCTTCAGCTGGAACAGAGGCTGGCCAAATCTCTGTGTGAGA
 ATATGATGATCTCCGTGATGTGATGTCAGCTCCGCGTACAACAAAGTGACTCTGGGGCAGCTGCAGAAGATC
 ATCCCCATTTGCAAGTGAAGTGGCTGCTGGATCAGATCTCCAGGAAGACTTCTCGAGGAGGAGGAGG
 TGGTGTCTGGCCACAGACTACATGCAGCAGGTGCCAGCTCATCCGCTCCACACCTCGAAGGATCCT
 GCACAACCTACCTAGTGTGGCGTGTGGTGGTGGTTCTGAGTGAGCACCTGCCTCACCATCCGAGAGGCA
 CTGCATGAGCTGGCCAAAGAGATGGAGGCAATGACAAGCCCCAGGAGTTGGCCCCGAGTCTGCCTGGGCC
 AGGCCAACCGCCACTTCGGCATGGCTCTTGGTGCCTCTTTGTACATGAACACTTCTCAGCTGCCAGTAA
 AGCCAAGGTGCAGCAGCTAGTGAAGATATCAAGTACATCTTGGGCCAGCGCCTGGAGGAGCTGGACTGG
 ATGGATGCCAGACCAAGGCAGCTGCTCGGGCCAAAGCTCCAGTACATGATGGTTCATGGTTGGCTATCCAG
 ACTTCTGCTGAAACCTGAGGCTGTAGACAAAGAATATGAGTTCGAGGTCCACGAGAAGACCTACTTCAA
 GAACATTTTGAACAGCATCCGATTCAAGTATCCAGTTGTCGTCGTCGTCGTCGTCGTCGTCGTCGTCGTCG
 TCCTCGTGGCTCCTCCACCACAGGCGCTCAATGCCTACTATCTGCCCAACAAGAATCAAATGGTCTTCC
 CAGCTGGCATCCTGCAGCCACCCTGTATGACCCAGACTTCCACAGTCTCTGAACTACGGGGGATTGG
 CACCATCATTGGGCACGAACTGACCCATGGCTATGACGACTGGGGGGGACAGTATGACCGCTCAGGAAAC
 CTGTTGCACTGGTGGACTGAGACCTCTACAGCCACTTTCTGCGCAAGGCCGAGTGCATCGTTCCGCTCT
 ATGACAACTTCACCGTCTACAACCAGCGGTGAATGGGAAACACACACTTGGCGAGAACATCGCAGACAT
 GGGAGGCCTCAAGCTGGCCTACTATGCCTATCAGAAGTGGGTCCGGGAGCATGGCCCCGAGCACCCGCTG
 CACCGGCTCAAGTACACACACAACCAGCTTTTCTTCATTGCCTTTGCACAGAAGTGGTGCATCAAGCGAC
 GGTACAGTCCATCTACCTGCAGGTGCTGACAGACAAGCATGCACCTGAGCACTACCGGGTCTGGGCAG
 CGTATCCAGTTTGAGGAATTCGGCCGGGCTTCCACTGTCCCAAGGACTCTCCCATGAACCCCGTCCAT
 AAGTGCTCTGTGTGG

ACGCGTACGCGGCCGCTCGAG – GFP Tag – GTTTAA

Protein Sequence: >MG210577 representing NM_021306
 Red=Cloning site Green=Tags(s)

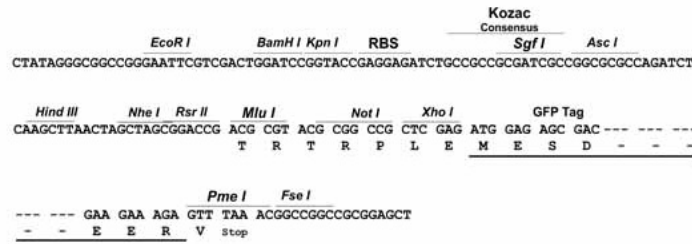
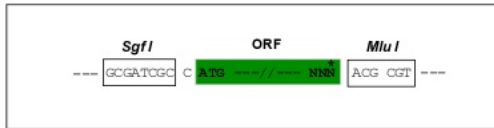
```
MEAPYSMTAHYDEFQEVKYVSRCTGGARGTSLPPGFPRGSGRSASGSRSGLPRWNRREVCLLSGLVF
AA GLCAILAAMLALKYLGPGAAGGGGACPEGCPERKAFARAARFLSANLDASIDPCQDFYSFACGGW
LRRHA IPDDKLYGTIAAIGEQNEERLRRLLARPTGGPGGAAQRKVRFFRSCLDMREIERLGPRP
MLEVIEDCG GWDLGAADRPGAARWDLNRLLYKAQGVYSAAALFSLTVSLDDRNSSRYVIRIDQD
GLTLPERTLYLAQD EESEKILAAAYRVFMQRLLRLLGADAVEQKAQEILQLEQLANISVSEYD
DLRRDVSSAYNKVTLGQLQKI IPHLQWKWLLDQIFQEDFSEEEVLLATDYMQQVSQLIRSTP
RRLHNYLVWRVVVVLSEHLSPPFREA LHELAKEMEGNDKPQELARVCLGQANRHFGMALGAL
FVHEHFSAAASKAKVQQLVEDIKYILGQRLEELDWM DAQTKAAARAKLQYMMVMGYPDFLL
KPEAVDKKEYEFVHEKTYFKNILNSIRFSIQLSVKKIRQEVDK SSWLLPPQALNAYYL
PNKNQMVFPAGILQPTLYDPDFPQSLNYGGIGTII GHELTHGYDDWGGQYDRSGN
LLHWWTETSYSHF LRKAECIVRLYDNFTVYNQRVNGKHTLGENIADMGGLKLAYYAYQK
WVREHGPEHPL HRLKYTHNQLFFIAFAQNWCIKRRSQSIYLQVLTDKHAPEHYRVLGS
VSQFEEFGRAFHC PKDSPMNPVH KCSVW
```

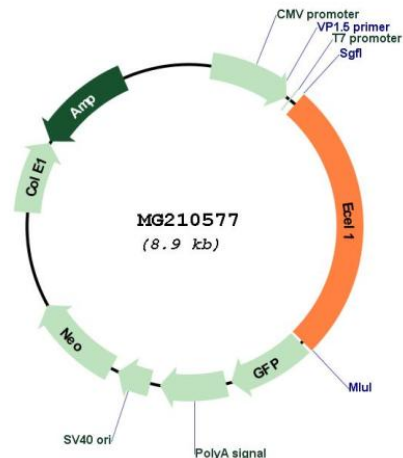
TRTRPLE - GFP Tag - V

Restriction Sites: SgfI-MluI

Cloning Scheme:

Cloning sites used for ORF Shuttling:



Plasmid Map:


ACCN: NM_021306

ORF Size: 2325 bp

OTI Disclaimer: The molecular sequence of this clone aligns with the gene accession number as a point of reference only. However, individual transcript sequences of the same gene can differ through naturally occurring variations (e.g. polymorphisms), each with its own valid existence. This clone is substantially in agreement with the reference, but a complete review of all prevailing variants is recommended prior to use. [More info](#)

OTI Annotation: This clone was engineered to express the complete ORF with an expression tag. Expression varies depending on the nature of the gene.

Components: The ORF clone is ion-exchange column purified and shipped in a 2D barcoded Matrix tube containing 10ug of transfection-ready, dried plasmid DNA (reconstitute with 100 ul of water).

Reconstitution Method:

1. Centrifuge at 5,000xg for 5min.
2. Carefully open the tube and add 100ul of sterile water to dissolve the DNA.
3. Close the tube and incubate for 10 minutes at room temperature.
4. Briefly vortex the tube and then do a quick spin (less than 5000xg) to concentrate the liquid at the bottom.
5. Store the suspended plasmid at -20°C. The DNA is stable for at least one year from date of shipping when stored at -20°C.

RefSeq: [NM_021306.3](#)

RefSeq Size: 2728 bp

RefSeq ORF: 2328 bp

Locus ID: 13599

UniProt ID: [Q9JMI0](#)

Cytogenetics: 1 C5

Gene Summary:

May contribute to the degradation of peptide hormones and be involved in the inactivation of neuronal peptides.[UniProtKB/Swiss-Prot Function]