

## Product datasheet for **MG210572**

### **Dgcr8 (NM\_033324) Mouse Tagged ORF Clone**

#### **Product data:**

Product Type:	Expression Plasmids
Product Name:	Dgcr8 (NM_033324) Mouse Tagged ORF Clone
Tag:	TurboGFP
Symbol:	Dgcr8
Synonyms:	D16H22S788E; D16H22S1742E; D16Wis2; Gy1; mir-1306; N41; Vo59c07
Mammalian Cell Selection:	Neomycin
Vector:	pCMV6-AC-GFP (PS100010)
E. coli Selection:	Ampicillin (100 ug/mL)



[View online »](#)

ORF Nucleotide  
Sequence:

>MG210572 representing NM\_033324  
 Red=Cloning site Blue=ORF Green=Tags(s)

TTTTGTAATACGACTCACTATAGGGCGGCCGGAATTCGTCGACTGGATCCGGTACCGAGGAGATCTGCC  
 GCC**CGCATCGCC**

ATGGAGACATATGAGAGTCCCTCTCCTCTCCCGGTGAGCCCGCAGGAGAAGCGATGATGGAGAACCGAG  
 CTTGCCCTTCCAAGTGCTGCCCATGAACAGTCTCCACCACCTCCCCTGCAAACGTCCAGTGATGCAGA  
 GGTAATGGACGTTGGCTCTGGTGGTGGTGGACAGTCCGAACCTCCTGCCGACGACCCATTCAACTCTAC  
 GGAGCTTCTCTTCTCCTCAAAGGATCCTTCTCTAAGGGCCGCTCCTCATAGACCCGAACTGTAGTGGCC  
 ACAGCCCGCGCACTGCCCGGCACGCACCTGCGGTCCGGAAGTTCTCCCCTGACCTTAAGTTGCTTAAGGA  
 TGTAAGATTAGCGTGGCTTTACTGAGAGTGCAGGAGTAAGGACAGGAAGGTGCTGTACACAGGAGTA  
 GAACGCAGCACTCGCCTGAGTGTGGCCAGCTCCTTAGTCTGTCAGTGGGACGTGCATGCTTGTCCCT  
 TTGGCGGGAGTGTGGTAATGGGTAGGCTAGGGGTGAGAGTGCAGATAAGAAGGATGAGGAAAATGA  
 GCTGGATCAGGAAAAGAGAGTGGAGTATGCAGTCTCGATGAGTTAGAAGATTTTACTGACAATTTGGAG  
 CTAGATGAAGAAGAACAGGCGGGTTCACGGCTAAAGCAATCGTTCAAAGAGACAGAGTGGATGAAGAGG  
 CCTTGAATTTCTCCTATGAGGATGACTTTGACAATGATGTGGACGCTTACTAGAGAAGGTCTCTGTGC  
 TCCAAGAAGAGGCGAATGGAGGAAAAATATGGCGGAGACAGTGCATCCATCTGATGGAGAGACAAGT  
 GTACAGCCAATGATGACCAAGATTAACAAGTGCCTCAAAAGTCTGGCCGTCCACCTACAGAGCCATTGC  
 CTGATGGATGGATCATGACTTTTATAATTCTGGAGTCCCTGTATACCTGCACAGAGAGTCTCGAGTGGT  
 CACTTGGTCCAGACCCTACTTCTTGGGAACAGGAAGCATACGGAACATGATCCTCCTTAAGCAGTATC  
 CCCTGCCTACATTATAAGAAAATGAAGGACAATGAGGAACGAGAACAACAACTGTGATCTTGCCCCAGTG  
 GAGAGGTGCACCTGTCAAGCCCTTGGTCTGGTCTGCAGAGTTGGATTTCCCTCTGGAAGAGCCTGCTC  
 CATGGGTGGAGACTCAGGGTCCATGGATGAGAAGGACCCATTGGGGCTGAGGCAGCCGCTGGAGCCCTG  
 GGACAAGTGAAGGCTAAAGTTGAGGTGTGCAAAGATGAATCAGTTGATCTGGAGGAATTTCTGAATTAAC  
 TTGAGAAGCGTTTTGACTTTGAACAAGTAACTGTAAAAAATTCAGGACTTGGGCTGAGCGGCGTCAAGT  
 CAACCGTGAGATGAAGCGGAAGCAGGCCGAGTCAAGAGGCCCCATCCTGCCAGCCAACAGAAAGCTGATC  
 ACTCTATCTGTACAAGATGCACCCACAAAGAAAGAGTTTGTCAATCCAATGGGAAGTCTGAGGTTT  
 GCATCCTGCACGAATACATGCAGCGTGCCTCAAGGTCCGCCCTGTTTATAATTTCTTTGAATGTGAGAA  
 TCCAAGTGAAGCCTTTTGGTGCCTCCGTGACCATTGATGGTGTGACTTACGGATCTGGAAGTCAAGCAGC  
 AAAAACTTGCGAAGAATAAAGCTGCCGAGCCACCCTGGAAATTCATCCCTGACTTTGTTAAACAGA  
 CCTCTGAGGAGAAGCCTAAAGACAGTGAAGAACTGGAGTATTTAACCACATCAGTATTGAGGATTCAGG  
 AGTCTATGAGCTGACAAGCAAGGCTGGGCTGTTGTCTCCATATCAGATCCTCCATGAGTGCCTTAAAGA  
 AACCATGGAATGGGTGACACATCCATCAAGTTTGAAGTGGTTCCCTGGGAAAAACCAGAAGAGTGAATATG  
 TTATGGCATGCGGCAAACACACAGTGCAGGCGGTGGTGAAGAATAAACGAGTTGGGAAACAATTAGCATC  
 TCAGAAAAATCCTTCAAGTACTGCACCCACATGTCAAGAACTGGGTTCCCTACTACGCATGTATGGTCTG  
 GAGAGCAGCAAAATGGTCAAGCAGGAGACCTCTGACAAGAGTGTGATAGAGCTACAGCAGTATGCCAAGA  
 AGAACAGGCCCAACCTTACATCCTGAGCAAGCTACAAGAAGAGATGAAGAGGCTGGCTGCAGAGCGGGA  
 GGAGACTCGGAAGAAACCAAGATGTCAATTGTAGCATCTGCCAGCCTGGTGGTGGAGCCCTTGTGCACA  
 GTCGATGTA

**ACGCGT**ACGCGGCCGCTCGAG - GFP Tag - GTTTAA

Protein Sequence: >MG210572 representing NM\_033324  
 Red=Cloning site Green=Tags(s)

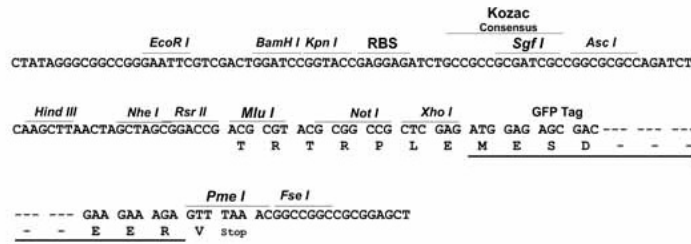
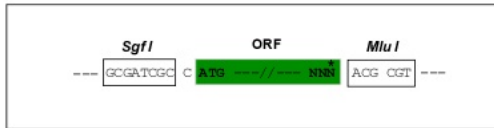
METYESPSPLPREPAGEAMMENRACPFQVLPHEQSPPPPLQTSSDAEVMVGVGGDQSEPPADDPFNFY  
 GASLLSKGSFSKGRLLIDPNCSGHSRPTARHAPAVRKFSPLKLLKDVKISVSFTESCRKDRKVLTYGV  
 ERSTRPECGQLLSPVSGDVHACPFGGVGVNGVGLGGESADKKDEENELDQEKRVYAVLDELEDFTDNLE  
 LDEEGTGGFTAKAIVQRDRVDEEALNFSYEDDFDNDVDALLEEGLCAPKKRRMEEKYGGSDHPSDGETS  
 VQPMMTKIKTVLKSRRPPEPLPDGWIMTFHNSGVVYVYLRHRESRVVTVSRPYFLGTGSIRKHDPLSSI  
 PCLHYKKMKDNEEREQNCDLAPSGEVSPVKPLGRSAELDFLEPDSMGDSDGSMDEKDPDPLGAEAAAGAL  
 GQVKAKVEVCKDESVDLEEFNRYLEKRFDFEQVTYKFKRTWAERRQFNREMRRKQAESERPILPANQKLI  
 TLSVQDAPTKKEFVINPNGKSEVCILHEYMQRVLKVRPVYVNFECENPSEPFASVTIDGVTYGSSTASS  
 KKLAKNKAARATLEILIPDFVKQTSEEKPKDSELEYFNHISIEDSRVYELTSKAGLLSPYQILHECLKR  
 NHGMGDTSIKFEVVPKGNQKSEYVMACGKHTVRGWCKNKRVGKQLASQKILQLLHPHVKNWGSLLRMYGR  
 ESSKMKVQETSDKSVIELQQYAKKNRPNLHILSKLQEMKRLAEREETRKKPKMSIVASAQPGGEPLCT  
 VDV

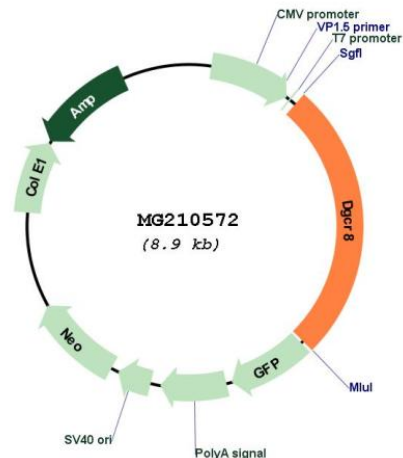
TRTRPLE - GFP Tag - V

Restriction Sites: SgfI-MluI

Cloning Scheme:

Cloning sites used for ORF Shuttling:



**Plasmid Map:**


**ACCN:** NM\_033324

**ORF Size:** 2319 bp

**OTI Disclaimer:** The molecular sequence of this clone aligns with the gene accession number as a point of reference only. However, individual transcript sequences of the same gene can differ through naturally occurring variations (e.g. polymorphisms), each with its own valid existence. This clone is substantially in agreement with the reference, but a complete review of all prevailing variants is recommended prior to use. [More info](#)

**OTI Annotation:** This clone was engineered to express the complete ORF with an expression tag. Expression varies depending on the nature of the gene.

**Components:** The ORF clone is ion-exchange column purified and shipped in a 2D barcoded Matrix tube containing 10ug of transfection-ready, dried plasmid DNA (reconstitute with 100 ul of water).

**Reconstitution Method:**

1. Centrifuge at 5,000xg for 5min.
2. Carefully open the tube and add 100ul of sterile water to dissolve the DNA.
3. Close the tube and incubate for 10 minutes at room temperature.
4. Briefly vortex the tube and then do a quick spin (less than 5000xg) to concentrate the liquid at the bottom.
5. Store the suspended plasmid at -20°C. The DNA is stable for at least one year from date of shipping when stored at -20°C.

**RefSeq:** [NM\\_033324.2](#), [NP\\_201581.2](#)

**RefSeq Size:** 4226 bp

**RefSeq ORF:** 2322 bp

**Locus ID:** 94223

**UniProt ID:** [Q9EQM6](#)

**Cytogenetics:** 16 11.31 cM

**Gene Summary:**

Component of the microprocessor complex that acts as a RNA- and heme-binding protein that is involved in the initial step of microRNA (miRNA) biogenesis (PubMed:17259983). Component of the microprocessor complex that is required to process primary miRNA transcripts (pri-miRNAs) to release precursor miRNA (pre-miRNA) in the nucleus. Within the microprocessor complex, DGCR8 function as a molecular anchor necessary for the recognition of pri-miRNA at dsRNA-ssRNA junction and directs DROSHA to cleave 11 bp away from the junction to release hairpin-shaped pre-miRNAs that are subsequently cut by the cytoplasmic DICER to generate mature miRNAs. The heme-bound DGCR8 dimer binds pri-miRNAs as a cooperative trimer (of dimers) and is active in triggering pri-miRNA cleavage, whereas the heme-free DGCR8 monomer binds pri-miRNAs as a dimer and is much less active. Both double-stranded and single-stranded regions of a pri-miRNA are required for its binding. Specifically recognizes and binds N6-methyladenosine (m6A)-containing pri-miRNAs, a modification required for pri-miRNAs processing (By similarity). Involved in the silencing of embryonic stem cell self-renewal (PubMed:17259983).[UniProtKB/Swiss-Prot Function]