

Product datasheet for **MG210564**

Cpt1b (NM_009948) Mouse Tagged ORF Clone

Product data:

Product Type:	Expression Plasmids
Product Name:	Cpt1b (NM_009948) Mouse Tagged ORF Clone
Tag:	TurboGFP
Symbol:	Cpt1b
Synonyms:	Cpt1; Cpt1-m; Cpti; Cpti-m; M-cpti
Mammalian Cell Selection:	Neomycin
Vector:	pCMV6-AC-GFP (PS100010)
E. coli Selection:	Ampicillin (100 ug/mL)



[View online »](#)

ORF Nucleotide Sequence:

>MG210564 representing NM_009948
 Red=Cloning site Blue=ORF Green=Tags(s)

TTTTGTAATACGACTCACTATAGGGCGGCCGGAATTCGTCGACTGGATCCGGTACCGAGGAGATCTGCC
 GCC**CGGATCGCC**

ATGGCGGAAGCACACCAGGCAGTAGCTTCCAGTTCCTGACCCAGACGGGGTCGACTTCCGGCTTA
 GTCGGGAGGCTCTGAGACACATCTACCTGTCTGGAATCAACTCCTGGAAGAAACGCCTTATTGCAATCAA
 GAATGGCATCCTTAGGGGTGTGTACCCTGGCAGCCCCACCAGCTGGCTGGTTGTTGTCATGGCAACAGTT
 GGTTCCAACTACTGCAAGGTGGACATCTCCATGGGACTGGTGCATTGCATCCAGAGATGCCTCCCGGAAA
 GGTATGGCCACTTTGGACCCACAGACAGAGGCATTCTCAGCATGGTTCATCTTCTCCACCGGAGTCTG
 GGCGACAGGCATTTTCTTCCGACAAACCTTGAAGTGTCTCTCTACCACGGGTGGATGTTGAG
 ATGCACAGCAAGACCAGCCATGCCACCAAGATCTGGGCTATCTGTGTCCGTCTCTGTCCAGCCGGCGGC
 CCATGCTCTACAGCTTCCAAACGTCCTGCTAAGCTTCTGTCCCGAGCGTCCAGCCACAATTCACCG
 GTACTTGGATTCTGTGCGGCCCTTATTGGATGATGAAGCATATTACCGCATGGAGACATTGGCCAAGGAA
 TTCCAGGACAAGACTGCCCCAGGCTGCAGAAATACCTGGTGCTCAAGTCATGGTGGGCAACTAATATG
 TGAGTGACTGGTGGGAAGAATATGTCTACCTCCGAAGCAGGAGCCCCCTCATGGTGAACAGCAACTATTA
 TGCCATGGATTTTGTGCTTATTAAGAACAACAAATGTGCAAGCAGCCCGTCTAGGCAATGCCGTTACGCC
 ATGATCATGTATCGCCGCAAACTGGACCGTGAAGAGATCAAGCCGGTTCATGGCACTGGGTATGGTCCCA
 TGTGCTCTACCAGATGGAGAGGATGTTCAACACTACACGCATCCAGGCAAAGAGACAGACTTGTACA
 GCACCTCTCAGAGAGCAGGCACGTGGCTGTCTACCACAAGGTGCTTCTTCAAGGTCTGGCTCTATGAG
 GGCTCGCGCTGCTCAAGCCCCGAGACCTGGAGATGCAGTTCAGAGAATCCTCGACGACCTTCCCCAC
 CTCAGCCTGGGGAGGAGAAGCTGGCAGCCCTCACCGCAGGAGGAAGGGTAGAGTGGGAGGACAGGCACCA
 GACCTTCTCAGCTCTGGCAAGAACAAGATGTCTCTGGACGCCATCGAAGGTGCTGCTTTCTTGTGACC
 CTGGATGAAGATTCTCATTGCTACAACCTGACGATGAGACCAAGTCTTAGCCTCTACGGCAAAGCCTTGC
 TCCATGGCAACTGCTATAACAGGTGGTTTGACAAATCTTTCACCTTATCTCTGCAAGAATGGCCTGTT
 AGGCCTCAACACCGAACACTCGTGGCAGACGCGCCCATATTGGGCACCTCTGGGAGTTTGTCTGGGC
 ACTGATACCTTTACCTGGGCTACACGGAGACAGGACACTGTGTGGGTGAGCCAAACACCACGTTGCCAC
 CCCCTCAGCGGCTGCCGTGGGACATTCCCGAGCAGTCCCGGGAAGCCATCGAGAACTCGTACCAAGTAGC
 CAAGGCACTGGCCGATGACGTGGAGCTCTACTGCTTCCAGTCTTACCCTTTGGCAAAGGTCTTATCAAG
 AAGTGTAGGACCAGCCCCGACGCTTTTGTGCGAGATTGCCCTACAGCTGGCTCATTTCGGGACAAAGGCA
 AGTTCTGCCTGACTTACGAGGCCTCGATGACAAGAATGTTCCGAGAGGGCGGACTGAGACTGTGCGTTC
 CTGTACCAACGAGTCCGACGCTTTGTGCAAGGCCATGATGAAGGGGTCCCATAAAGAAACAAGACCTCCAA
 GATCTCTTCCGGAAAGCCTCCGAAAAGCACAAAACATGTACCGCTAGCCATGACAGGGGCTGGGATCG
 ACCGGCACCTCTTCTGCCTTACATCGTCTCCAAGTACTAGGAGTTAGCTCTCCTTTCTGGCTGAGGT
 ACTTTCTGAACCTGGAGCCTCTCCACCAGCCAGATCCCCAGTTCAGATCTGCATGTTTGACCCAAAA
 CAGTATCCCAATCATCTGGGTGCTGGAGGTGGCTTTGGTCCCGTGGCGGATGATGGCTACGGGGTCTCTT
 ACATGATCGCAGGAGAAAAACCATGTTCTTCCACATCTCCAGCAAATACTCAAGTTCAGAGACGAAACGC
 CCAGCGCTTTGGGAACCATCCGCCAAGCACTGTTGGACATCGCCGAACCTTTCAAATTTCCAAGACA
 GACAGC

ACGCGTACGCGGCCGCTCGAG – GFP Tag – GTTTAA

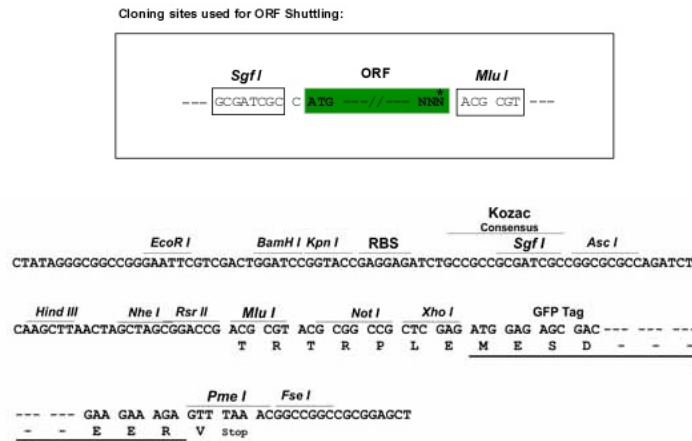
Protein Sequence: >MG210564 representing NM_009948
Red=Cloning site Green=Tags(s)

```
MAEAHQAVAFQFTVTPDGVDFRLSREALRHIYLSGINSWKKRLIRIKNGILRGVYPGSPTSWLVVVMATV
GSNYCKVDISMLGVDCIQRCLPERYGHFGTPEALLSMVIFSTGVWATGIFFFRQTLKLLLSYHGWMFE
MHSKTSKATKIWAICVRLSSRRPMLYSFQTSPLPKLPVPSVPATIHRYLDSVRPLLDDEAYYRMETLAKE
FQDKTAPRLQKYLVLKSWWATNYVSDWEEYVYLRSRSPMLVNSNYAMDFVLIKNTNVQAARLGNVHA
MIMYRRKLDREEIKPVMALGMVPMCSYQMERMFNTTRIPGKETDLLQHLSESRHVAVYHKGRFKVWLYE
GSRLKLPDRLEMQFQRILDDPSPQPGEKLAALTAGGRVEAEARQTFSSGKNKMSLDAIERAAFFVT
LDEDSHCYNPDDETSLSLYGKALLHGNCYNRWFDSFTLISCKNGLLGLNTEHSWADAPIIGHLWEFVLG
TDTFHLGYTETGHCVGEPTTLPPPQRLPWDIPEQCREAIENSYQVAKALADDVELYCFQFLPFQGLIK
KCRTSPDAFVQIALQLAHRDKGKFCLEYEASMRMFREGRTETVRSCTNESAAFVQAMMKGSHKKQDLQ
DLFRKASEKHQNMRYRLAMTGAGIDRHLFCLYIVSKYLGVSPPFLAEVLSEPSLSTSQIPQFQICMFDPK
QYPNHLGAGGGFVPVADDGYGVSYMIAGENTMFFHISKEYSSSENAQRFGNHIRQALLDIAELFKISK
DS
```

TRTRPLE - GFP Tag - V

Restriction Sites: SgfI-MluI

Cloning Scheme:



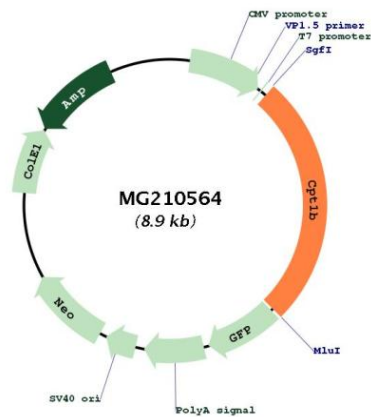
ACCN: NM_009948

ORF Size: 2316 bp

OTI Disclaimer: The molecular sequence of this clone aligns with the gene accession number as a point of reference only. However, individual transcript sequences of the same gene can differ through naturally occurring variations (e.g. polymorphisms), each with its own valid existence. This clone is substantially in agreement with the reference, but a complete review of all prevailing variants is recommended prior to use. [More info](#)

OTI Annotation: This clone was engineered to express the complete ORF with an expression tag. Expression varies depending on the nature of the gene.

Components:	The ORF clone is ion-exchange column purified and shipped in a 2D barcoded Matrix tube containing 10ug of transfection-ready, dried plasmid DNA (reconstitute with 100 ul of water).
Reconstitution Method:	<ol style="list-style-type: none"> 1. Centrifuge at 5,000xg for 5min. 2. Carefully open the tube and add 100ul of sterile water to dissolve the DNA. 3. Close the tube and incubate for 10 minutes at room temperature. 4. Briefly vortex the tube and then do a quick spin (less than 5000xg) to concentrate the liquid at the bottom. 5. Store the suspended plasmid at -20°C. The DNA is stable for at least one year from date of shipping when stored at -20°C.
RefSeq:	<u>NM_009948.1, NP_034078.1</u>
RefSeq Size:	2894 bp
RefSeq ORF:	2319 bp
Locus ID:	12895
UniProt ID:	<u>Q924X2</u>
Cytogenetics:	15 44.89 cM

Product images:


Circular map for MG210564