

Product datasheet for **MG210563**

Slc7a14 (BC061928) Mouse Tagged ORF Clone

Product data:

Product Type:	Expression Plasmids
Product Name:	Slc7a14 (BC061928) Mouse Tagged ORF Clone
Tag:	TurboGFP
Symbol:	Slc7a14
Synonyms:	A930013N06; BC061928
Mammalian Cell Selection:	Neomycin
Vector:	pCMV6-AC-GFP (PS100010)
E. coli Selection:	Ampicillin (100 ug/mL)



[View online »](#)

ORF Nucleotide
Sequence:

>MG210563 representing BC061928
 Red=Cloning site Blue=ORF Green=Tags(s)

TTTTGTAATACGACTCACTATAGGGCGGCCGGGAATTCGTCGACTGGATCCGGTACCGAGGAGATCTGCC
 GCCGCGATCGCC

ATGAGTGGCTTTCTGGCCTCACTGGACCCGAGGCGGGTACAGTGGGGAGCCGCCTGGTATGCAATGCACT
 CTCGGATCCTGCGCACCAAAACCAGTGGAGTCCATGCTGGAGGAACTGGGACCACCTCGGCGCATGGTAC
 CAAGCTAGCCCAGGTTCTCACTACTGTAGACCTCATCTCTTGGAGTCCGCAGCTGTGTGGCACTGGC
 ATGTATGTGGTGTCTGGCCTGGTGGCAAGGAGATGGCAGGGCCTGGGGTTCATCGTGTCTTCATCATTG
 CTGCTGTTGCATCTATATTATCAGGTGTGTGCTATGCAGAGTTTGGAGTCCGAGTCCCAAGACCACAGG
 ATCTGCCTACACCTACAGCTATGTCACCGTTGGGGAGTTCGTGGCATTTCATCGGCTGGAACTTGATT
 CTGGAGTACCTGATTGGCAGGCAGCTGGTGCCAGTGTCTGAGCAGTATGTTTGACTCCCTGGCAAACC
 ACAGCATCAGCCGCTGGATGGTGGACACCGTGGGAACCCTCAACGGCCTGGGAAAGGGGAAGAGTCGTA
 CCCAGACCTTCTGGCTCTGGTATTGCCGTTCATCGTGACCATCATTGTGGCTCTGGGAGTAAAACTCT
 GTGGGCTTCAACAACGTCTCAATGTGCTGAACCTGGCAGTGTGGGTGTTTCATCATGATCGCAGGCCTCT
 TCTTCATCAATGGCAAATACTGGGCTGAAGGCCAGTTCCTGCCCCACGGATGGTCAGGGGTGCTGCAAGG
 AGCAGCCACGTGCTTCTATGCTTTCATTGGCTTTGACATCATTGCCACCACGGGTGAGGAAGCCAAGAAC
 CCCAACACATCCATCCCTACGCCATCACGGCATCCCTGGTCACTGCTGACAGCGTATGTGTCTGTGA
 GCATGATCTTAACCCTGATGGTACCATATTACGCCATTGACACAGAGTCCCCGCTCATGGAGATGTTTGT
 GGCCATGGCTTCTATGCTGCGAAGTTTGTAGTGGCCATTGGCTCGGTGGCAGGACTGACCGTCAGCTTG
 CTGGGCTCCCTGTTCCCATGCCAGGGTCATTTACGCCATGGCTGGCGATGGGCTGCTTTTCAGGTTCC
 TGGCTCACGTGAGCTCCTACACAGAGACACCAGTGGTAGCTTGCATAGTGTGTCAGGCTTCTGGCTGCTCT
 CCTCTCTGCTGGTGGCTGAGCCTGAGGGACCTCATAGAGATGATGCCATCGGCACGCTCCTCGCCTACACC
 CTGGTCTCTGTCTGTGCTTCTGCTTCTCGGTATCAACCTGAGAGCGACATCGATGGTTTTGTCAAGTTC
 TGTCTGAGGAGCACCAAGAAGAAGGAAGGCATCCTGGCTGACTGTGAGAAGGAAAACCTGTTCTCCTGT
 GAGTGAAGGGGAGGAATTTCCAGCCCAGCCACCAACCTGTGGGGCCAAAACCTGCCGTCTTGGGA
 GACAATGAGATGCTCATAGGAAATCAGATAAGTCCGCCTACAACGTCAACCACCCCAACTACGGCACTG
 TGGATATGACCACGGGCATAGAAGCCGATGAATCAGAAAACATCTATCTCATCAAGTTGAAGAAGCTGAT
 CGGACCCCGTTACTACACCATGAGAATCCGGCTGGGCCTCCAGGCAAAATGGACCGGCCACGGCGGGC
 ACCGGGCACACGGTGACCATCTGCGTGTCTGCTGTTTCATCCTCATGTTTCATCTTCTGCTCCTTCA
 TCTTTGGCTCTGAGTACATCTCAGGCCAGAGCTGGTGGGCCATCCTTCTGGTCTGATGATGCTGCT
 GATCAGTGTGCTGGTGTGTAATCCTGCAGCAGCCAGAGAACCCTCAAGAAGCTGCCGTACATGGCCCC
 TGCCCTCCCTTTGTACCTGCCTTTGCCATGTTGGTGAATATCTATCTCATGCTAAAGCTCTCCACCATCA
 CATGGATCCGGTTTGGGTCTGGTGTCTTGTGGGTATGCTCATTATTTTGGGTATGGCATCTGGAACAG
 CACCTTGGAAATCAGCGCCCAGAGCAAGCCCTGCATCAGAGCACGTACCAGCGCTACGATGTGGATGAT
 CCCTTTTCTGTGGAGGAGGGTTCTCTACGCCACCGAGGGCGAGAGCCAGGAGGACTGGGGTGGGCCC
 CCGAGGACAAAGGCTTCTATTACCAACAGATGTCAGATGCGAAGGCAAAACAGCCGGACGAGTAGCAAAG
 GAAAAGCAAAAGCAAAACAAACAGAAGTCCGAGGCCCTGATTGCAAATGACGAGTTAGATTGCTCTCCG
 GAG

ACGCGTACGCGGCCGCTCGAG - GFP Tag - GTTTAA

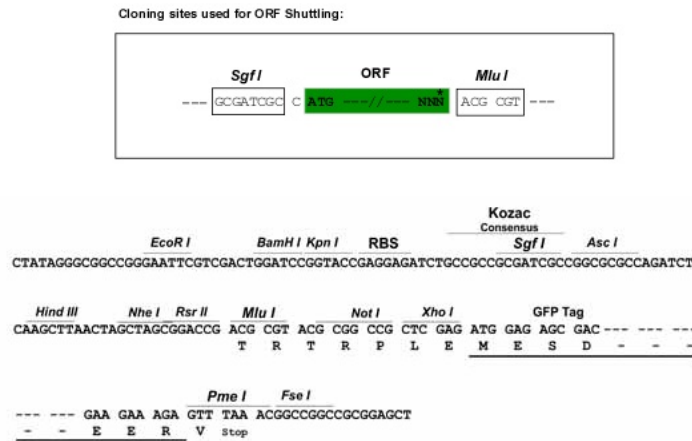
Protein Sequence: >MG210563 representing BC061928
Red=Cloning site Green=Tags(s)

```
MSGFLASLDPRRVQWGAAWYAMHSRILRTPVESMLEGTGTTSAHGKLAQVLTVDLISLGVGSCVGTG
MYVVSGLVAKEMAGPGVIVSFIIAAVASILSGVCYAEFGVRVPKTTGSAYTYSYVTVGEFVAFFIGWNL
LEYLIGTAAGASALSSMFDLANHSISRWMVDTVGTNLGLGKGEEYDPDLLALVIAVIVTIIIVALGVKNS
VGFNNVNLVNLAVVWFIMIAGLFFINGKYWAEQGQFLPHGWSGVLQGAATCFYAFIGFDIIATTGEEAKN
PNTSIPYAITASLVICLTAYVSVSMILTLMPYPAIDTESPLMEMFVAHGKYAAKFVVAIGSVAGLTVSL
LGSFLPMPRIYAMAGDGLLFRFLAHVSSYTETPVVACIVSGFLAALLSLLVSLRDLIEMMSIGTLLAYT
LVSVCVLLRLRYQPESDIDGFVKFLSEEHTKKKEGILADCEKETCSPVSEGEFSSPATNTCGAKNPLSLG
DNEMLIGKSDKSAYNVNHPNYGTVDMTTGIEADESENIYL IKLKKLIGPRYYTMRIRLGLPGKMDRPTAA
TGHTVTICVLLLFILMFIFCSFIIFGSEYISGQSWWAILLVLLMMLLISVLVFLVILQQPENPKLPMYAP
CLPFVPAFAMLVNIYMLKLSTITWIRFAVWCFVGM LIYFGYIWNSTLEISAREQALHQSTYQRYDVDD
PFSVEEGFSYATEGESQEDWGGPAEDKGFYYQQMSDAKANSRTSSKAKSKSKHKQNSEALIANDELDCSP
E
```

TRTRPLE - GFP Tag - V

Restriction Sites: SgfI-MluI

Cloning Scheme:



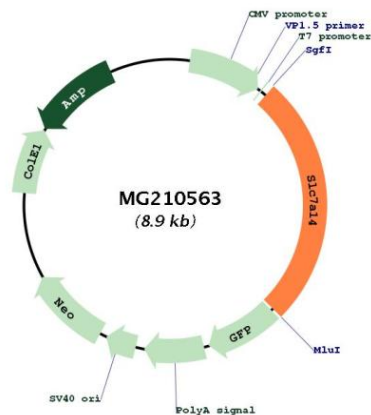
ACCN: BC061928

ORF Size: 2315 bp

OTI Disclaimer: The molecular sequence of this clone aligns with the gene accession number as a point of reference only. However, individual transcript sequences of the same gene can differ through naturally occurring variations (e.g. polymorphisms), each with its own valid existence. This clone is substantially in agreement with the reference, but a complete review of all prevailing variants is recommended prior to use. [More info](#)

OTI Annotation: This clone was engineered to express the complete ORF with an expression tag. Expression varies depending on the nature of the gene.

Components:	The ORF clone is ion-exchange column purified and shipped in a 2D barcoded Matrix tube containing 10ug of transfection-ready, dried plasmid DNA (reconstitute with 100 ul of water).
Reconstitution Method:	<ol style="list-style-type: none">1. Centrifuge at 5,000xg for 5min.2. Carefully open the tube and add 100ul of sterile water to dissolve the DNA.3. Close the tube and incubate for 10 minutes at room temperature.4. Briefly vortex the tube and then do a quick spin (less than 5000xg) to concentrate the liquid at the bottom.5. Store the suspended plasmid at -20°C. The DNA is stable for at least one year from date of shipping when stored at -20°C.
RefSeq:	<u>BC061928</u> , <u>AAH61928</u>
RefSeq Size:	5454 bp
RefSeq ORF:	2315 bp
Locus ID:	241919
Cytogenetics:	3 A3
Gene Summary:	May be involved in arginine transport.[UniProtKB/Swiss-Prot Function]

Product images:

Circular map for MG210563