

## Product datasheet for **MG210562**

### **Psd2 (NM\_028707) Mouse Tagged ORF Clone**

#### **Product data:**

Product Type:	Expression Plasmids
Product Name:	Psd2 (NM_028707) Mouse Tagged ORF Clone
Tag:	TurboGFP
Symbol:	Psd2
Synonyms:	6330404E20Rik; AW125584; EFA6C
Mammalian Cell Selection:	Neomycin
Vector:	pCMV6-AC-GFP (PS100010)
E. coli Selection:	Ampicillin (100 ug/mL)



[View online »](#)

**ORF Nucleotide Sequence:**

>MG210562 representing NM\_028707  
 Red=Cloning site Blue=ORF Green=Tags(s)

TTTTGTAATACGACTCACTATAGGGCGGCCGGAATTCGTCGACTGGATCCGGTACCGAGGAGATCTGCC  
 GCC**GCGATCGCC**

ATGGATGAAGAGAAGCTCCCATGTGAGCTGCACAAGGAAGGGAGTGCTACCCAGGAGGACCACGGCCTGG  
 AGCCCGAAGAGGAGCCTGGGCTCCAGAATGGAACAGCAGCCAGCGAAGGCCTGAGCAGCCACATCAGCGG  
 CCCAGGCGGTGAGAAGACCTTAGAGGGTACCATGGAGCCTGTGAGAGGCCAGATGTGGCCCTGCCTGGC  
 CTTAACCTCTCTTTGACCAATGGCCTGGCTTTGGGACAAGATGGGAACATTTTGAAGATTCCATAGAAT  
 TTAAGACCTGGAGAAGCGGACCAGCAGAGGAGGAGGATGTCCCTGGGAGTCCCTGTCCAGATGCTGGGGA  
 CCCTCAGCTGGGGCTGGATTGTCTGGCGAACAGATGTACGTGATGGCTTCAGTGCCACTTTTGAGAAG  
 ATTCTGGAGTCGGAGCTACTGCGGGGCACCCAGTATAGCAGCCTGGACTCTTTAGATGTGCTGAGTCTCA  
 CTGACGAGAGTGACAGCTGTGTCAGCTTCGAGGCCCCCTTACACCTCTCATCCAGCAGAGGGCTCGAGA  
 TAGCCCCGAGGCCGGGGCTGGGCTGGGCAATGGGGACATGGGGCCTGAAGGGGATCTGGGGCAACTGGT  
 GGTGTGATGGGGAAGTGGCAGTCCCCTGAGGCGGTCCATCTCTAGCAGCCGCTCAGAGAATGTCTTGA  
 GCCACCTGTCTCTCACCTCGGTGCCAATGGGTTCCATGAAGATGGGCCTGGGGGCTCGGGAGGGGACGA  
 TGAGGACGATGAGGACACGGACAAGTTGCTGAACCTCTGCCAGTGACACCAGCCTTAAGGATGGCCTGTG  
 GACTCGGACTCGGAGCTGAGCAGCTCTGAGGGGCTGGAGCCTGGCAGCACAGATCCACTGGCCAACGGGT  
 GCCAGGGGGTCAGCGAAGCCGCTCGCAGGCTGGCCCGACGGCTCTACCATCTTGAAGGTTTCCAGCGCTG  
 TGATGTAGCTCGGACGCTGGGCAAGAACAATGAGTTTACGAGGCTGGTTGCTGGGGAGTACCTCAGTTTC  
 TTCGACTTCTCAGGCCTCACTTTGGACAGAGCACTCAGAACCTTCTCTCGCCGCTACTGCCAGTGAACCCAGACGAC  
 AGACACGGAACGAGAACGAGTCCCTTACCCACTTCTCTCGCCGCTACTGCCAGTGAACCCAGACGACAC  
 CACATCAGAAGATGGGATCCACACGCTCACCTGCGCCCTGATGCTCAACACAGACCTGCATGGACAC  
 AACATTGGCAAGAAGATGTCTGCGCAGCAATTCATTGCCAATTGGACCAGCTGAACGATGGCCAAGACT  
 TTGCCAAAGACTTTTGAAGACTTTTACAACCTCCATCAAGAACGAAAAGCTGGAATGGGCCATTGATGA  
 GGATGAGCTGAGGAAATCCCTGTCTGAGCTGGTGGATGACAAGTTTGGGACGGGCACAAAGAAGGTGACT  
 CGGATCTTGGATGGTGGCAATCCATTCTGGATGTCCCGCAGGCTCTCAACGCTACCACCTACAAGCATG  
 GCGTGTGACCCGGAAGACTCATGCGGACATGGATGGCAAGAGGACACCCCGTGGGAGGCGTGGCTGGAA  
 GAAATTCTATGCAGTGTCAAAGGGACCATCCTGTACCTGCAGAAGGATGAGTACAGGCTTGACAAGGCT  
 CTGTCTGAGGGGACCTGAAGAATGCCATCCGTGTGCACCACGCTCTGGCCACCAGGGCTTCTGACTACA  
 GTAAGAAGTCAAACGTGCTCAAGCTGAAGACAGCAGACTGGAGGGTGTTCCTCTTCCAGGACCCGAGCAA  
 GGAAGAGATGTTGTCTGGATCCTGAGGATCAACCTAGTAGCCGCCATCTTCTCAGCACCAGCCTTCCCA  
 GCAGCCGTGAGCTCCATGAAGAAGTTTGTGCGACCCCTGTGCCCTCCTGTACCACCCGCTCTGCCAGG  
 AGGAGCAGCTGCGGTCTCATGAGAATAAGTTGAGGCAGGTGACTGCAGAGCTGGCTGAGCACAGGTGTCA  
 CCCACTGGAGAGAGGCCTCAAGTCTAAGGAAGCAGAAGAGTACCGTCTGAAGGAACACTATCTCACCTTT  
 GAGAAAAGCCGTTATGAGACCTATATTCACCTCCTGGCCGTGAAAATCAAAGTGGGCTCAGATGACCTGG  
 AGCGGATTGAGGCACGGCTGGCTACTATAGAAGGGGATGACCCAGCTCTCCGAAAACACTCAAGCCC  
 CGCCCTCAGCTGGGCCACGGCCCTGTGACTGGCAGCAAAGCCACAAAGGATACCTCTGCATCTGATACT

**ACGCGT**ACGCGGCCGCTCGAG - GFP Tag - GTTTAA

**Protein Sequence:** >MG210562 representing NM\_028707  
 Red=Cloning site Green=Tags(s)

MDEEKLPCELHKEGSATQEDHGLEPEEPLQNGTAASEGLSSHISGPGGEKTLEGTMEPVVRGPDVALPG  
 LNL SL TNGLALGQDGNILEDSEIEFKTWRS GPAEEEDVPGSPCPDAGDPQLGLDCPGEPDVRDGF SATFEK  
 ILESELLRGTQYSSLDSDLVLSL TDESDSCVSEAPL TPLIQQRARDSPEAGAGLNGDMGPEGDLGATG  
 GCDGELGSPLRRSISSSRSENVLSHL SL TSVPNGFHEDGPGSGGDDDEDEDTKLLNSASDTSLKDGLS  
 DSDSELSSSEGLEPGSTDPLANGCQGVSEARRLARRLYHLEGFQRCDVARQLGKNNF SRLVAGEYLSF  
 FDFSGLTLDRALRTFLKAFPLMGETQERERVL THFSRRYCQCNPDSTSEDGIHTLT CALMLLNTDLHGH  
 NIGKKMSCQQFIANLDQLNDGQDFAKDLLKTL YNSIKNEKLEWAIDEDELRSLSLSELVDDKFGTGKVKVT  
 RILDGGNPF LDVPPALNATTYKHGVL TRKTHADM DGKRTPRRRGWKIFYAVLKGITILYLQKDEYRLDKA  
 LSEGLDKNAIRVHHALATRASDYSSKSNVLKLTADWRVFLFQAPSKEEMLSWILRINLVAEIFSAPAFP  
 AAVSSMKKFCRPLLPSCTTRLCQEQLRSHENKLRQVTAELAEHRCHPLERGLKSKEAEEYRLKEHYLTF  
 EKSRYEYIHL LAVKIKVGSDDLRIEARLATIEGDDPALRKTHSSPALSLGHGPVTGSKATKDTASDT

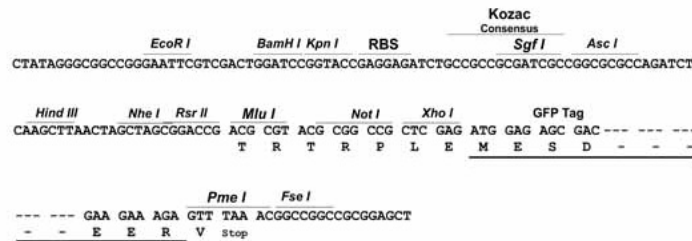
TRTRPLE - GFP Tag - V

**Restriction Sites:**

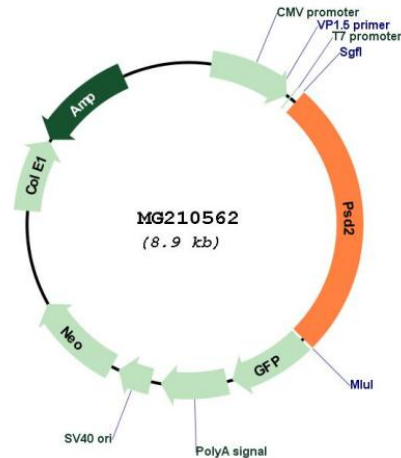
SgfI-MluI

**Cloning Scheme:**

Cloning sites used for ORF Shutting:



Plasmid Map:



ACCN: NM\_028707

ORF Size: 2310 bp

OTI Disclaimer: The molecular sequence of this clone aligns with the gene accession number as a point of reference only. However, individual transcript sequences of the same gene can differ through naturally occurring variations (e.g. polymorphisms), each with its own valid existence. This clone is substantially in agreement with the reference, but a complete review of all prevailing variants is recommended prior to use. [More info](#)

OTI Annotation: This clone was engineered to express the complete ORF with an expression tag. Expression varies depending on the nature of the gene.

Components: The ORF clone is ion-exchange column purified and shipped in a 2D barcoded Matrix tube containing 10ug of transfection-ready, dried plasmid DNA (reconstitute with 100 ul of water).

Reconstitution Method:

1. Centrifuge at 5,000xg for 5min.
2. Carefully open the tube and add 100ul of sterile water to dissolve the DNA.
3. Close the tube and incubate for 10 minutes at room temperature.
4. Briefly vortex the tube and then do a quick spin (less than 5000xg) to concentrate the liquid at the bottom.
5. Store the suspended plasmid at -20°C. The DNA is stable for at least one year from date of shipping when stored at -20°C.

RefSeq: [NM\\_028707.4](#)

RefSeq Size: 4623 bp

RefSeq ORF: 2313 bp

Locus ID: 74002

UniProt ID: Q6P116

Cytogenetics: 18 B2