

Product datasheet for **MG210561**

Pigr (BC013556) Mouse Tagged ORF Clone

Product data:

Product Type:	Expression Plasmids
Product Name:	Pigr (BC013556) Mouse Tagged ORF Clone
Tag:	TurboGFP
Symbol:	Pigr
Mammalian Cell Selection:	Neomycin
Vector:	pCMV6-AC-GFP (PS100010)
E. coli Selection:	Ampicillin (100 ug/mL)



[View online »](#)

**ORF Nucleotide
Sequence:**

>MG210561 representing BC013556
 Red=Cloning site Blue=ORF Green=Tags(s)

TTTTGTAATACGACTCACTATAGGGCGGCCGGAATTCGTCGACTGGATCCGGTACCGAGGAGATCTGCC
 GCC**CGCATCGCC**

ATGAGGCTCTACTTGTTCACGCTCTTGGTAACTGTCTTTTCAGGGGTCTCCACAAAAAGCCCATATTTG
 GTCCCAGGAGGTGAGTAGTATAGAAGGCGACTCTGTTTCCATCACGTGCTACTACCCAGACACCTCTGT
 CAACCGGCACACCCGAAATACTGGTGCCGACAAGGAGCCAGCGCATGTGCACAACGCTCATCTTTCA
 AATGGCTACCTCTCAAGGAGTATTCAGGCAGAGCCAACCTCATCAACTCCCAGAGAACAACACATTTG
 TGATTAACATTGAGCAGCTACCCAGGACGACTGGGAGCTACAAGTGTGGCCTGGGTACCAGTAACCG
 AGGCTGTCTTCGATGTCAGCCTGGAGGTGAGCCAGGTTCTGAGTTGCCGAGTGACACCCACGCTAC
 ACAAGGACATAGGCAGAAATGTGACATTGAATGCCCTTTCAAAGGGAGAATGCTCCAGCAAGAAAT
 CCCTGTGTAAGAAGACAAACCAGTCTGCGAATTGTCATTGACTCTACTGAGAAGGTGAACCCAGCTA
 TATAGGCAGAGCAAACTTTTTATGAAAGGACCGACCTAACTGTATTCTATGTCAACATTAGTCACCTA
 ACGCACAATGATGCTGGGCTGTACATCTGCCAAGCTGGAGAAGGTCCTAGTGCTGATAAGAAGAATGTTG
 ACCTCCAGGTGCTAGCGCTGAGCCAGAGCTGCTTTATAAAGACCTGAGGTCTCTAGTGACTTTTGAATG
 TGACCTGGGCCGTGAGGTGGCAAACGAGGCCAAATATCTGTGCCGGATGAATAAGGAAACCTGTGATGTG
 ATCATTAAACCCCTGGGAAGAGGGATCCAGACTTTGAGGGCAGGATCCTGATAACCCCAAGGATGACA
 ATGGCCGCTTCAGTGTGTTGATCACAGGCTGAGGAAGGAGGATGCAGGGCACTACCAGTGTGGAGCCCA
 CAGTTCGTGTTTGCTCAAGAAGGCTGGCCATCCAGACTTGCAACTCTTTGTCAATGAAGAGTCTACC
 ATTCCTCAATCGTCGCTCTGTTGTGAAGGAGTACAGGAGGCTCTGTGGCCATCGCTGTCCCTATAACC
 CCAAGGAAAGCAGCAGCCTCAAGTACTGGTGTGCTGGGAAGGGACGGAATGGACATTGCCCCGTGCT
 TGTGGGGACCCAGGCCAGGTGCAAGAAGAGTATGAAGGCCGACTGGCACTGTTTGATCAGCCAGGCAAT
 GGTACTTACACTGTCATCTCAACCAGCTACCCAGGATGCTGGCTTCTATTGGTGTCTTACCAATG
 GTGACTCTCGCTGGAGAACCACAATAGAACTCCAGGTTGCCAAGCTACAAGGGAGCCAAACCTTGAGGT
 GACGCCACAGAACGCAACAGCAGTACTAGGAGAGACCTTACCCTTCTGCCACTATCCGTGCAAATTC
 TACTCCCAGGAGAAATACTGGTCAAGTGGAGCAACAAGGTTGCCACATCTGCCAAGCCATGACGAAG
 GTGCCCGCAATCTTCTGTGAGCTGCGACCAGAGCAGCCAGCTGGTCTCCATGACCTGAACCCGGTCAG
 TAAGGAAGATGAAGGCTGGTACTGGTGTGGGTAAAGCAAGGCCAGACCTATGGAGAACTACCGCCATC
 TATATAGCAGTTGAAGAGAGGACCAGAGGGTCAATCCATGTCAACCAACAGATGCAAATGCACGTGCCA
 AAGTCGCTCTGGAAGAAGAGGTAGTGGACTCCTCCATCAGTGAAAAGAGAAACAAAGCCATTCCAAATCC
 CGGGCCTTTTGCCAACGAAAGAGAGATACAGAATGTGGGAGACCAAGCTCAGGAGAACAGAGCATCTGGG
 GATGCTGGCAGTGTGATGGACAAAGCAGGAGCTCCAGCTCCAAAGTGTGTTCTCCACCCTGGTCCCC
 TGGGTCTGGTGTGGCAGTGGGTGCTATAGCTGTGTGGGTGGCCAGAGTCCGACATCGGAAGAATGTAGA
 CCGCATGTCAATCAGCAGCTACAGGACAGACATTAGCATGGCAGACTTCAAGAACTCCAGAGATTTGGGA
 GGCAATGACAACATGGGGCCTCTCCAGACACACAGCAACAGTCATCGAAGGAAAAGATGAAATCGTGA
 CTACCACGGAGTGCACCGCTGAGCCAGAAGAATCCAAGAAAGCAAAAAGGTATCCAAGGAGGAAGCTGA
 CATGGCCTACTCGCATTCTGCTTCAGTCCAGCACCATAGCTGCACAGGTCCACGATGGTCCCCAGGAA
 GCC

ACGCGTACGCGGCCGCTCGAG - GFP Tag - GTTTAA

Protein Sequence: >MG210561 representing BC013556
 Red=Cloning site Green=Tags(s)

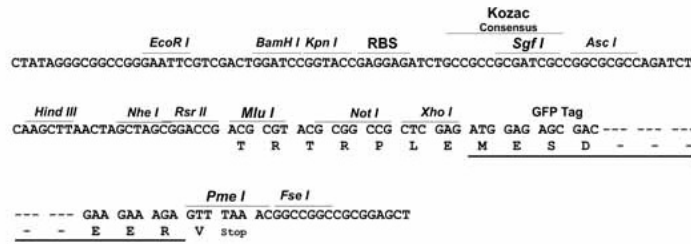
MRLYLFTLLVTVFSGVSTKSPIFGPQEVSSIEGDSVSITCYYPDTSVNRHTRKYWCRQGASGMCTTLISS
 NGYLSKEYSGRANLINFENNTFVINIEQLTQDDTGSYKCGLGTSNRGLSFDVSLEVSQVPELPSDTHVY
 TKDIGRNVITIECPFKRENAPSKKSLCKKTNQSCELVIDSTEKVNPSYIGRAKLFMKGTDLTVFYVNI
 SHLTHNDAGLYICQAGEGPSADKKNVDLQVLAPEPELLLYKDLRSSVTFECDLGREVANEAKYLCRMN
 KETCDV IINTLGKRDPDFEGRILITPKDDNGRFSVLITGLRKEDAGHYQCGAHSSGLPQEGWPIQ
 TWQLFVNEEST IPNRRSVVKGVTTGGSVAIACPYNPKESSSLKYWCRWEGDNGHCPVLVGTQAQV
 QEEYEGRLALFDQPGN GTYTVILNQLTTEDAGFYWCLTNGDSRWRTTIELQVAEATREP
 NLEVTPQNATAVLGETFTVSCHYPCKFYSQEKYWKWSNKGCHILP
 SHDEGARQSSVSCDQSSQLVSMTLNPVSKEDEGWYWC
 GVKQGQTYGETTAIYIAVEERTRGSSHVNPTDANARAKVA
 EEEVVDSSI SEKENKAIPNPGPFANEREIQNVGDQAQENRASG
 DAGSADGQSRSSSKVLFSTLVPLGLVLAVGAI
 AVWVARVHRKNVDRMSISSYRTDISMADFKNSRD
 LG GNDNMGASPDTQQT
 VIEGKDEIVTTECTAEPEESKKAKRSSKEEADMAYSAFL
 LQSSTIAAQVHDGPQE
 A

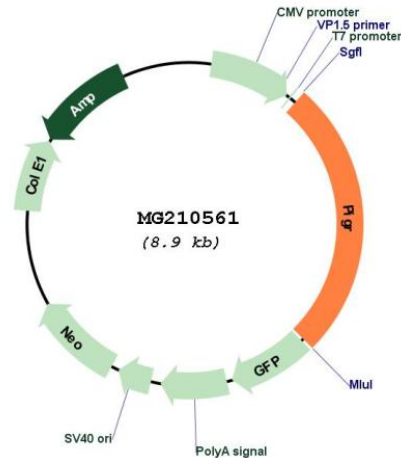
TRTRPLE - GFP Tag - V

Restriction Sites: SgfI-MluI

Cloning Scheme:

Cloning sites used for ORF Shuttling:



Plasmid Map:


ACCN: BC013556

ORF Size: 2315 bp

OTI Disclaimer: The molecular sequence of this clone aligns with the gene accession number as a point of reference only. However, individual transcript sequences of the same gene can differ through naturally occurring variations (e.g. polymorphisms), each with its own valid existence. This clone is substantially in agreement with the reference, but a complete review of all prevailing variants is recommended prior to use. [More info](#)

OTI Annotation: This clone was engineered to express the complete ORF with an expression tag. Expression varies depending on the nature of the gene.

Components: The ORF clone is ion-exchange column purified and shipped in a 2D barcoded Matrix tube containing 10ug of transfection-ready, dried plasmid DNA (reconstitute with 100 ul of water).

Reconstitution Method:

1. Centrifuge at 5,000xg for 5min.
2. Carefully open the tube and add 100ul of sterile water to dissolve the DNA.
3. Close the tube and incubate for 10 minutes at room temperature.
4. Briefly vortex the tube and then do a quick spin (less than 5000xg) to concentrate the liquid at the bottom.
5. Store the suspended plasmid at -20°C. The DNA is stable for at least one year from date of shipping when stored at -20°C.

RefSeq: [BC013556](#), [AAH13556](#)

RefSeq Size: 3560 bp

RefSeq ORF: 2315 bp

Locus ID: 18703

Cytogenetics: 1 56.89 cM

Gene Summary:

This receptor binds polymeric IgA and IgM at the basolateral surface of epithelial cells. The complex is then transported across the cell to be secreted at the apical surface. During this process a cleavage occurs that separates the extracellular (known as the secretory component) from the transmembrane segment (By similarity).[UniProtKB/Swiss-Prot Function]