

## Product datasheet for **MG210541**

### Ampd3 (NM\_009667) Mouse Tagged ORF Clone

#### Product data:

Product Type:	Expression Plasmids
Product Name:	Ampd3 (NM_009667) Mouse Tagged ORF Clone
Tag:	TurboGFP
Symbol:	Ampd3
Mammalian Cell Selection:	Neomycin
Vector:	pCMV6-AC-GFP (PS100010)
E. coli Selection:	Ampicillin (100 ug/mL)



[View online »](#)

**ORF Nucleotide Sequence:**

>MG210541 representing NM\_009667  
 Red=Cloning site Blue=ORF Green=Tags(s)

TTTTGTAATACGACTCACTATAGGGCGGCCGGGAATTCGTCGACTGGATCCGGTACCGAGGAGATCTGCC  
 GCC**CGCATCGCC**

ATGCCGCGCCAGTTCCTCCCAAGTTGAACATGTCCGATTTGGACGAACATGTCCGGCTGTTGGCGGAGAAGG  
 TGTTTGCCTAAGGTGCTCCGAGAAGAGGACAGCAAAGATGTCATGTCCCTGTTTACTGTCCCCGAGGACTG  
 TCCCATCGGACAGAAGGAAGCCAAGGAGAGGGAGCTACAGAAGGAGCTTGCAGAGCAGAAGTCTGTGGAG  
 ACAGCAAAAAGAAAGAAGAGTTTCAAGATGATCCGGTTCGAGTCTTTGTCCCTGCAGATGCCAACACAAC  
 AAGACTGGAAAGGTCTCCAAGTCCAGTCTGCCATGTCTCTGCAACCCCTCTGGTTCGGGAGCTAC  
 TTCTAAGCCTGGGCCAGCACCTATGCTATGCCTGAGTATCAGCGGGTACCATCAGTGGAGATTACTGT  
 GCAGGGATCACTGTGGAAGACTATGAGCAGGCTGCCAAGAGCCTGGCCAAGGCCCTGATGATCCGGGAGA  
 AGTATGCACGGCTTGCTACCACCGCTTCCACGGACCACAGCCAGTACCTGGCTCATCAGGGGAAAG  
 TGTGCCTTTGGAAGAGGGTCTCCAGACTTCCACCTCCCCACTGCCCCAGGAAGACCTTATTGCCTG  
 GATGATGCACCCCAACTGGGCTACCTGGTTCGCATGCACGGAGGTGTCTCTTTGTGTATGACAATC  
 AGACGATGTTGGAACGCCAGGAGCCCCACAGCCTGCCCTACCCTGACCTGGAGACCTACATTGTGGACAT  
 GAGCCATATTCTGGCACTCATCACTGATGGCCCCACGAAAACCTATTGTCAACCGGCGACTGAACTTCTG  
 GAATCCAAGTTTTCAGCTTTCATGAGATGTTAAATGAAATGTGAGAGTTCAAGGAATTGAAGAGTAACCC  
 ACAGAGACTTTTATAATGTGAGAAAGGTAGACACACACATTATGCAGCGGCTGCATGAATCAGAAGCA  
 CCTGCTGCGTTTCATCAAGCACAGTACCAGACAGAGCCGACAGAACTGTGGCGGAGAAGTAGGTCCG  
 AAGATCACCTGCGGCGAGGTGTTTGACAGCCTGCACATGGACCCCTACGACCTCACGGTGGACTCGCTGG  
 ATGTTTATGCAGCGCCAGACATTTACCGCTTCGACAAGTTCAACTCCAAGTACAACCCCGTGGGGGC  
 CAGCGAGCTCCGGGACCTGTATCTGAAAACCTGAGAACTACCTCGGGGAGAATACTTTGCTCGCATGGTC  
 AAGGAAGTGGCCCGGAGCTAGAGGACAGCAAGTACCAATACTCAGAACCCCGGCTCTCCATCTATGGTC  
 GCAGTCCAAGGAGTGGTCTAGCCTGGCCCGCTGGTTCATCCAGCACAAGGTCTACTCACCAACATGCG  
 CTGGATCATCCAGGTGCCCGCATCTATGATATATTTAGGTCAAAGAACTACTGCCAACTTTGGGAAG  
 ATGCTGGAGAACATCTTCTGCCCTGTTCAAAGTACCATCAACCCCAAGATCATCGGGAGCTTACC  
 TCTTCTTAAATACGTGACTGGGTTTGACAGTGTGGATGACGAATCCAAGCACAGTGACCACATGTTCTC  
 AGACAAGAGTCCCAGCCAGACCTCTGGACCAGCGAGCAGAACCCGCCCTATAGTTACTACCTGTACTAC  
 ATGATGCCAACATCATGGTGTGAACAACCTCCGCAGGGAACGAGGCCCTGAGCAGTTCCTCTTCCGGC  
 CCACTGTGGGGAGGCCGCTCCATCACTCACCTAGTGTCTGCCTTCCTGACGGCAGACAACATTTCCCA  
 CGGGCTGCTGCTTAAGAAGAGCCCTGTTTTGCAGTACCTCTACTACCTTGCTCAGATCCCTATTGCCATG  
 TCTCTCTCAGCAACAACAGCCTGTTTCTGGAATATTCCAAGAACCCCTCCGGGAATTCCTGCACAAGG  
 GACTACATGTCTCTCTCTACCAGTACCCCATGCAGTTTCACTACACAAGGAAGCGCTCATGGAGGA  
 GTACGCCATTGCGGCACAAGTGTGGAAGCTGAGTACCTGCGACCTGTGTGAGATCGCCAGGAACAGTGTG  
 CTGCAGAGTGGCCTCTCACATCAGGAGAAGCAGAAGTTTCTGGGTGAGAATTATTACAAGGAAGGACCAG  
 AGGGCAATGACATTCGAAAGACAATGTTGCACAGATCCGGATGGCATTCCGCTACGAGACCCCTGTGTA  
 TGAGCTCAGCTTCTGTCCGATGCCATGAAGTCCGAGGAGATCACAGCCCTGACCAAA

**ACGCGT**ACGCGGCCGCTCGAG - GFP Tag - GTTTAA

**Protein Sequence:** >MG210541 representing NM\_009667  
 Red=Cloning site Green=Tags(s)

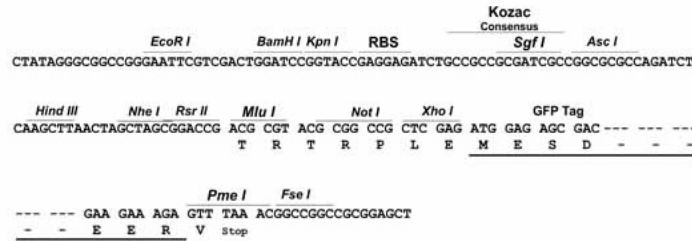
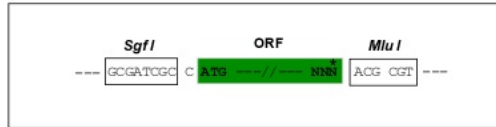
MPRQFPKLNMSDLDEHVRLLAEKVFQVLAKEVREEDSKDVMSLFTVPEDCPIGQKEAKERELQKELAEQKSVE  
 TAKRKKSFKMIRSQSLSLQMPTQQDWKGPPTASAMPSPATPLVPGATSKPGPAPYAMPEYQRTVTSGDYC  
 AGITVEDYEQAASLAKALMIREKYARLAYHRFPRTTAQYLAHQGESVPLEEGLPDFHPPPLPQEDPYCL  
 DDAPPNLGYLVRMHGGVLFVYDNQTMLEERQEPHSLPYPDLETYIVDMSHILALITDGPCTKYCHRRNLFL  
 ESKFSLHEMLNEMSEFKELKSNPHRDFYNVRKVDTIHAAACMNQKHLRFLIKHTYQTEPDRTVAEKLGR  
 KITLRQVFDLSLHMDPYDLTVDSLVDVHAGRQTFHRFDKFNKYNPVGAELRDLYLKTENYLGGEYFARMV  
 KEVARELEDISKYQYSEPRLSIYGRSPKEWSSLARWFIQHKVYSPNMRWIIQVPRIYDIFRSKLLPNFGK  
 MLENIFLPLFKATINPDHRELHLFLKYVTGFDSVDES KHS DHMFSDKSPDLWTSEQNPPYSYYLYY  
 MYANIMVLNLRERGLSTFLFRPHCGEAGSITHLVSAFLTADNISHGLLLKKSPVLQYLYLAQIPIAM  
 SPLSNNSLFLEYSKNPLREFLHKGLHVS LSTDDPMQFH YTK EALMEEY AIAAQVWKLSTCDLCEIARNSV  
 LQSGLSHQEKQKFLGQNY YKEGPEGNDIRKTNVAQIRMAFRYETLCNELSFLSDAMKSEEITALTK

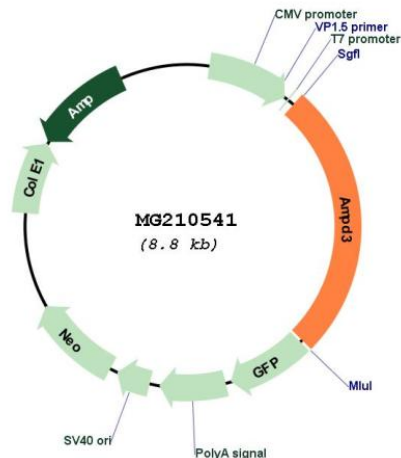
TRTRPLE - GFP Tag - V

**Restriction Sites:** SgfI-MluI

**Cloning Scheme:**

Cloning sites used for ORF Shutting:



**Plasmid Map:**


**ACCN:** NM\_009667

**ORF Size:** 2298 bp

**OTI Disclaimer:** The molecular sequence of this clone aligns with the gene accession number as a point of reference only. However, individual transcript sequences of the same gene can differ through naturally occurring variations (e.g. polymorphisms), each with its own valid existence. This clone is substantially in agreement with the reference, but a complete review of all prevailing variants is recommended prior to use. [More info](#)

**OTI Annotation:** This clone was engineered to express the complete ORF with an expression tag. Expression varies depending on the nature of the gene.

**Components:** The ORF clone is ion-exchange column purified and shipped in a 2D barcoded Matrix tube containing 10ug of transfection-ready, dried plasmid DNA (reconstitute with 100 ul of water).

**Reconstitution Method:**

1. Centrifuge at 5,000xg for 5min.
2. Carefully open the tube and add 100ul of sterile water to dissolve the DNA.
3. Close the tube and incubate for 10 minutes at room temperature.
4. Briefly vortex the tube and then do a quick spin (less than 5000xg) to concentrate the liquid at the bottom.
5. Store the suspended plasmid at -20°C. The DNA is stable for at least one year from date of shipping when stored at -20°C.

**RefSeq:** [NM\\_009667.3](#), [NP\\_033797.2](#)

**RefSeq Size:** 4098 bp

**RefSeq ORF:** 2301 bp

Locus ID: 11717

UniProt ID: [O08739](#)

Cytogenetics: 7 57.85 cM

**Gene Summary:** This gene encodes a member of the adenosine and AMP deaminases family. The encoded protein is an AMP deaminase involved in nucleotide and energy metabolism in erythrocytes. Alternative splicing results in multiple transcript variants. [provided by RefSeq, Jan 2013]