

Product datasheet for **MG210535**

Cpxm2 (NM_018867) Mouse Tagged ORF Clone

Product data:

Product Type:	Expression Plasmids
Product Name:	Cpxm2 (NM_018867) Mouse Tagged ORF Clone
Tag:	TurboGFP
Symbol:	Cpxm2
Synonyms:	4632435C11Rik; CPX-2; Cpx2
Mammalian Cell Selection:	Neomycin
Vector:	pCMV6-AC-GFP (PS100010)
E. coli Selection:	Ampicillin (100 ug/mL)



[View online »](#)

ORF Nucleotide
Sequence:

>MG210535 representing NM_018867
 Red=Cloning site Blue=ORF Green=Tags(s)

TTTTGTAATACGACTCACTATAGGGCGGCCGGAATTCGTCGACTGGATCCGGTACCGAGGAGATCTGCC
 GCC**CGGATCGCC**

ATGGCCCTGTGGGACCGCTGCCCTGCGCTGGCCCTGGCACTTGTGGCGGTGGCCCTGGCTG
 GAGTCAGAGCCCAGGGCGCAGCCTTCGAGGAGCCTGACTATTACAGCCAGGAGCTCTGGCGCGCGGGCG
 CTATCATGGGCATCCGGAGCCTGAGCCGGAGCCGAGCTTTCTCGCCTTCACTGCATGAAGACCTTAGG
 GTGGAGGAGCAGGAACAGCAGGAGCCGACCCAGCAGGGCCACAGGACTCCCAAGAAGGCCATCAAGCCCA
 AGAAGGCTCCCAAGAGGGAGAAGTTAGTTGCAGAGACGCTCCACCAGGTAAAAATAGCAACAGAAAAGG
 CAGAAGAAGCAAGAATCTTGAGAAAGCTGCCAGTGATGACCATGGTGTCCCTGTGGCTCATGAGGATGTC
 AGAGAGAGTTGCCACCTCTTGGTCTGGAACATTAATAATCACAGACTCCAGTGCATGCCTCCACAT
 CGAAGCGTTATGGCCTGGGAGCCACCGGGGAGACTCAACATCCAGGCAGGCATTAATGAAAATGACTT
 TTACGATGGGGCTTGGTGTGCTGGTAGGAACGACTTGCATCAGTGGATCGAAGTGGATGCCCGGCGCCTG
 ACCAAGTTCACAGGGGTCAATACCCAAGGAAGGAACTCTCTGGCTGAGTGACTGGGTGACATCCTATA
 AAGTCATGGTGAGCAATGACAGCCACACATGGGTTACTGTGAAGAATGGATCTGGCGACATGATATTTGA
 AGGAAACAGTGAGAAGGAGATTCTGTGCTCAATGAGCTGCCAGTCCCCATGGTGGCCCGCTACATTCGC
 ATAAACCTCAGTCTGGTTTGATAACGGGAGCATCTGCATGAGGATGGAGATCTTGGGCTGTCCACTGC
 CGGATCCTAATAACTATTATCACCGACGTAATGAGATGACCACCAGGATGACCTGGATTTTAAGCACCA
 CAACTATAAGGAAATGCCCAGTTGATGAAGTTGTCAATGAAATGTGCCCAATATTACCAGGATTTAC
 AAGTTGGTGAAGCCAGGCGCTGAAGTTGTATGCGGTAGAGATCTCTGACCATCCTGGGGAACATG
 GCTGCTGCTGCTGAGTTCTCTGCCAGGAATACTTGGCGCAGAACGCACGCATCGTCCGCTTGGTGGAG
 GAGACTCGAATCCACATCCTACCCTCCCTCAATCCTGATGGCTATGAGAAGGCCTATGAAGGAGGTTCCG
 AGTTGGGAGGCTGGTCCCTGGGACGTTGGACCCATGATGGCATCGATATCAACAACAACCTTTCCAGATTT
 AAACACGCTGCTCTGGGAGGCAGAGGACCAGCAGAATGCCCAAGGAAGGTCCCCAACCACTACATTGCC
 ATCCCTGAGTGGTTTCTGTCTGAGAATGCCACAGTGGCCACAGAGACCAGAGCCGTCATCGCCTGGATGG
 AGAAGATCCCCTTGTGCTGGGAGGCAACCTACAGGGGGTGAGCTGGTGGTGGCATAACCCCTATGACAT
 GGTGCGGTCCCTGTGGAAGACCCAGGAGCACACCCCAACCTGATGATCATGTGTTCCGCTGGCTAGCG
 TACTCCTACGCCCTCACTCACCCTCATGACAGATGCCAGGAGCGAGTGTGCCACACTGAAGATTTTC
 AGAAGGAGGAGGGCACCGTCAATGGGGCTTCTGGCACACAGTGGCTGGAAGTCTAAACGATTTTCAGCTA
 CCTCCATACAAACTGCTTTGAGCTGTCCATCTACGTGGGCTGTGATAAATACCCACACGAGAGCGAGCTG
 CCGGAGGAATGGGAAAATAACCGGGAGTCTCTGATTGTGTTTATGGAGCAGGTTTCATCGAGGCATCAAAG
 GCATAGTGAGAGATTTACAAGGGAAAGGATTTCAAATGCTGTCTCTGTGGAAGGTGTTAACCATGA
 CATCCGGACAGCCAGCGATGGGGATTACTGGCCTACTGAACCTGGCGAATATGTGGTACAGCCAAG
 GCGGAAGGCTTTACTCTCCACCAAGAAGTGCATGGTTGGCTATGATATGGGAGCTACTCGGTGTGACT
 TCACCTCACAAAGACCAACCTGGCTAGGATAAGAGAAATATGGAGACATTTGGGAAGCAGCCTGTCAG
 CCTACCCTCCAGGCGCTGAAGCTGCGGGACGAAAAGGCGGCAGCGTGGG

ACGCGTACGCGGCCGCTCGAG - GFP Tag - GTTTAA

Protein Sequence: >MG210535 representing NM_018867
 Red=Cloning site Green=Tags(s)

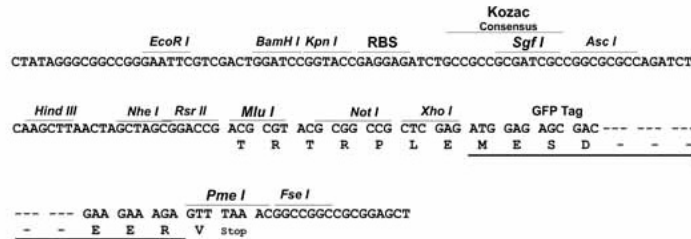
MARLGTACPALALALVAVALAGVRAQGAAFEEDYYSQELWRRGRYHGHEPEPEPEPELFSPSLHEDLR
 VEEQEQQEPHQGHRTPKKAIKPKKAPKREKLV AETPPP GKNSNRKGRRSKNLEKAASDDHGVPVAHEDV
 RESCPPLGLETLKITDFQLHASTSKRYGLGAHRGRLNIQAGINENDFYDGAWCAGRNDLHQWIEVDARRL
 TKFTGVITQGRNSLWLSDWVTSYKVMVSNDSHTWVTVKNGSGDMI FEGNSEKEIPVLNELPVMVARYIR
 INPQSWFDNGSICMRMEILGCPLPDPNNYYHRRNEMTTDDLDFKHNNYKEMRQLMKVVNEMCPNITRIY
 NIGKSHQGLKLYAVEISDHPGEHEVGEPEFHAIAGAHGNEVLGREL LLLLLLQFLCQEYLAQNARIVRLVE
 ETRIHLPSLNPDGYEKAYEGGSELGGWSLGRWTHDGIDINNNF PDLNTLLWEAEDQQNAPRKVPNHYIA
 IPEWFLSENATVATETRAVIWMEKIPFVLGGNLQGGELVVAYPYDMVRS LWTQEHTPTPDDHVFRWLA
 YSYASTHRLMTDARRRVCHTEDFQKEEGTVNGASWHTVAGSLNDFSYLHTNCFELSIYVGC DKYPHESEL
 PEEWENNRESLIVFMEQVHRGIKGIVRDLQGGKISNAVISVEGVNHDIRTASDGDYWRLLNPGEYVVTAK
 AEGFITSTKNCMVG YDMGATRCDFTLTKTNLARIREIMETFGKQPVSLPSRRLKLRGRKRRQRG

TRTRPLE - GFP Tag - V

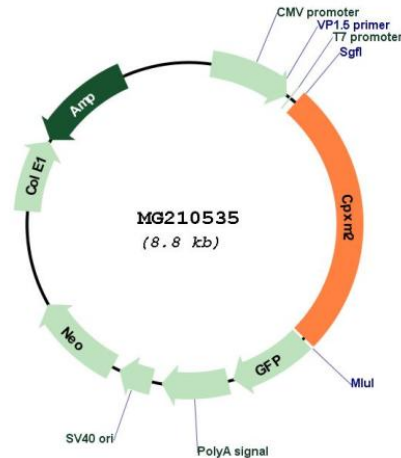
Restriction Sites: SgfI-MluI

Cloning Scheme:

Cloning sites used for ORF Shutting:



Plasmid Map:



ACCN: NM_018867

ORF Size: 2292 bp

OTI Disclaimer: The molecular sequence of this clone aligns with the gene accession number as a point of reference only. However, individual transcript sequences of the same gene can differ through naturally occurring variations (e.g. polymorphisms), each with its own valid existence. This clone is substantially in agreement with the reference, but a complete review of all prevailing variants is recommended prior to use. [More info](#)

OTI Annotation: This clone was engineered to express the complete ORF with an expression tag. Expression varies depending on the nature of the gene.

Components: The ORF clone is ion-exchange column purified and shipped in a 2D barcoded Matrix tube containing 10ug of transfection-ready, dried plasmid DNA (reconstitute with 100 ul of water).

Reconstitution Method:

1. Centrifuge at 5,000xg for 5min.
2. Carefully open the tube and add 100ul of sterile water to dissolve the DNA.
3. Close the tube and incubate for 10 minutes at room temperature.
4. Briefly vortex the tube and then do a quick spin (less than 5000xg) to concentrate the liquid at the bottom.
5. Store the suspended plasmid at -20°C. The DNA is stable for at least one year from date of shipping when stored at -20°C.

RefSeq: [NM_018867.3](#), [NP_061355.2](#)

RefSeq Size: 3499 bp

RefSeq ORF: 2295 bp

Locus ID: 55987

UniProt ID: [Q9D2L5](#)
Cytogenetics: 7 F3
Gene Summary: May be involved in cell-cell interactions.[UniProtKB/Swiss-Prot Function]