

Product datasheet for **MG210514**

Brinp1 (NM_019967) Mouse Tagged ORF Clone

Product data:

Product Type:	Expression Plasmids
Product Name:	Brinp1 (NM_019967) Mouse Tagged ORF Clone
Tag:	TurboGFP
Symbol:	Brinp1
Synonyms:	BRINP; Dbc1; Dbccr1; Fam5a
Mammalian Cell Selection:	Neomycin
Vector:	pCMV6-AC-GFP (PS100010)
E. coli Selection:	Ampicillin (100 ug/mL)



[View online »](#)

ORF Nucleotide
Sequence:

>MG210514 representing NM_019967
Red=Cloning site Blue=ORF Green=Tags(s)

TTTTGTAATACGACTCACTATAGGGCGGCCGGGAATTCGTCGACTGGATCCGGTACCGAGGAGATCTGCC
GCCGCGATCGCC

ATGAACTGGAGGTTTGTGAGCTCTACTTCTGTTTGTATGGGGCCGTATCTCAGTGCAGCCCTCCC
GCCAGGAGCCAGCTGGGACAGACCAACATGTCTCCAAGGAATTTGATTGGCTTATTTAGACAGGGGCC
TTTCCACCACTCCAGGAGCTACCTATCCTTTGTGAAAGACACCGCAAGGATTTACAACAGATATAAA
ATATACAGGGAGTTGCCGTTGGAAGGTGAGGAACACAGCCATAGAAAGGAGAGACCTGGTCCGTCACC
CAGTGGCCCTCATGCCGAGTTTCAAAGGAGCATCCGCTGCTTGGCAGGAGACCCACCTCAGCAGTT
CATTGATACCATCATCAAAAAGTACGGCACCCACCTGCTCATCTGCTACATTGGGAGGAGAGGAGGCT
TTGACCATGTACATGGACAAAAGTCGCCTGGACCGGAAGTCAGGGAATGCTACCCAAAGTGTGAAGCTT
TGCACCAGCTTGCATCATCTACTTTGTCGACCGTGATGGCACCATGAGAAGGCTCCATGAGATCCAGAT
TTCAACTGGAGCAATCAAGGTACAGAAACACGCACTGGGCCTCTGGGCTGTAACAGCTATGACAATCTG
GACTCTGTGAGTTCTGTCTTCTGCAAAGCACGGAGAGCAAACCTGCACCTTCAAGGTCTTCAAGATAATCT
TCCCGCAGTATCTGCAAGAGAAGTTTGTTCAGTCGGCCTTGAGTTACATCATGTGCAATGGAGAGGGAGA
GTATGTGTGTCAGAACAGCCAGTGTGCTGCCAGTGTGCTGAGGAGTTCCACAGTGCAACTGCCCATC
ACCGACATCCAGATCATGGAGTTTACGCTGGCAAACATGGCCAAGGCCTGGACTGAAGCTTATAAGGACC
TGGAGAATTCAGATGAGTTTAAAGTCATTTATGAAGCGTCTCCCAAGCAACCCTTCTGACGATTGGCAG
CATCCACCAGCACTGGGGCAATGACTGGGACCTGCAGAGCCGTTACAAGCTCCTACAGAGTGCCACTGAG
GCTCAGAGGCAGAAAATCCAGAGGACCGCCCGCAAGCTCTTTGGCCTCAGTGTGCGCTGCCGCCACAATC
CCAACCACGCTGCCTAGAGAGAGGACAATTCAACAGTGGCTTGCAAGGTCCAGTCATTCTCTATTG
CAATGAGAATGGGTTCTGGGGAACCTTCTGAAAGCCAGAGGAGTTGTGTGTCATGGTAGCACCACA
CTGTGCCAGCGCCTATCCCATGTATCATAGTGGGAACAACAGCTGTGCCATGTGCAGCCTGGCCAACA
TCTCACTCTGTGGCTCCTGCAATAAGGGCTACAAGCTGTATAGAGGCCGCTGTGAACCACAAAACGTGGA
CTCTGAGCGGAGTGAGCAGTTTATCAGCTTTGAGACCGACCTGGACTTCCAGGACTTGGAACTGAAGTAC
CTGTTGCAGAAGATGGATTACGCCTCTATGTCCATACTACCTTCATCAGCAATGAGATTCGCCTGGATA
CATTTTTTGACCCTCGGTGGCGCAAGCGCATGTCCCTCACTCTCAAAGCAACAAGAACCAGCATGGACTT
TATCCACATGGTATCGGAATGTCCATGCGTATCTGCCAGATGCGCAACAGCAGCCTGGACCCTATGTTT
TTTGTCTATGTCAATCCCTTCAGTGGGAGCCATTCAGAAGGCTGGAACATGCCCTTTGGGAATTTGGCT
ACCCTCGTTGGGAGAAGATCCGCTGCAAACAGCCAATGCTACAATTGGACTCTCTTGCTGGGCAATCG
GTGAAAAACTTTTTTCGAGACTGTCCATATCTACCTACGTAGTCGGACTCGGCTACCCACCTACGCAAT
GAGACTGGCCAGGGCCCGGTGGACCTGTGCGATCCCTCCAAAAGGCAGTTCTACATCAAGATCTCTGATG
TACAGGTGTTTGGGTACAGCCTGAGGTTCAATGCTGACCTCCTACGAAGTGCCGTGCAACAGGTGAATCA
GTCCTATACACAGGGTGGTCAGTTCTATTCCTCCTCATCCGTGATGCTTCTCATGTTGGACATTCGGGAC
CGAATCAACCGCTGGCCCTCCTGTGGCCCCAGGAAAACCCAGCTGGACTTGTTCCTGTATGCTGA
AGCACCCTGAAGCTGACCAACAGTGAGATTATCAGGGTGAACCATGCCTTGGACCTCTACAACACTGA
GATCCTCAAACAGTCTGACCAGATGACAGCCAAACTCTGC

ACGCGTACGCGGCCGCTCGAG - GFP Tag - GTTTAA

Protein Sequence: >MG210514 representing NM_019967
 Red=Cloning site Green=Tags(s)

MNWRFVELLYFLFVWGRISVQPSRQEPAGTDQHSKEFDWLISDRGPFHHSRYSLSFVERHRQGFTRYK
 IYREFARWKVRNTAIERRDLVRHPVPLMPEFQRSIRLLGRRPTTQQFIDTIIKKYGHLLISATLGGEAA
 LTMYMDKSRDLDRKSGNATQSVEALHQLASSYFVDRDGTMRRLHEIQISTGAIKVTETRTGPLGCNSYDNL
 DSVSSVLLQSTESKLHLQGLQIIFPQYLQEKFVQSALSYIMCNGEGEYVCQNSQCRCQCAEEFPQCNCPI
 TDIQIMEFTLANMAKAWTEAYKDLENSDEFKSFMKRLPSNHFLTIGSIHQHWGNDWDLQSRKLLQSATE
 AQRQKIQRARTARKLFLSVRCRHNPNHQLPRERTIQQWLARVQSLLYCENGFWGTFLSQRSVCVHGSTT
 LCQRPIPCIIIGNNSCAMCSLANISLGCSCNKGYKLYRGRCEPQNVDSERSEQFISFETDLDFQDLELKY
 LLQKMDSRLYVHTTFFISNEIRLDTFFDPRWRKMSLTLKSNKNRMDFIHMVIGMSMRICQMRNSSLDPMF
 FVYVNPFSGSHSEGWNMPFGEFGYPRWEKIRLQNSQCYNWTLNLLGNRWKTFEFVHIYLRSRTRLPLRN
 ETGQGPVDLSDPSKRQFYIKISDVQVFGYSLRFNADLLRSVAVQVNVQSYTGGQFYSSSSVMLMLDIRD
 RINRLAPPVAPGPKQLDLFSCMLKHRLKLTNSEIIRVNHALDLYNTEILKQSDQMTAKLC

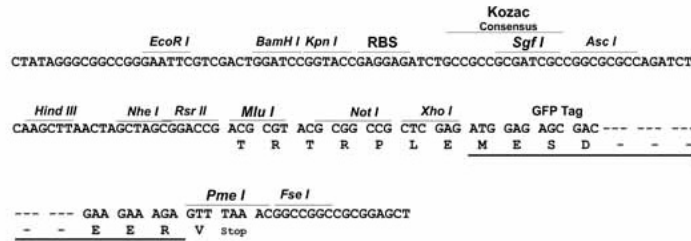
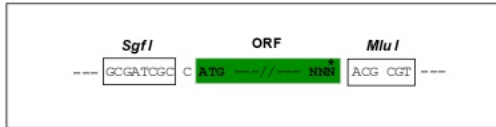
TRTRPLE - GFP Tag - V

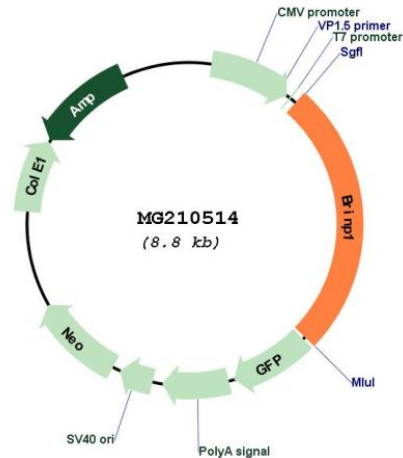
Restriction Sites:

SgfI-MluI

Cloning Scheme:

Cloning sites used for ORF Shutting:



Plasmid Map:


ACCN: NM_019967

ORF Size: 2280 bp

OTI Disclaimer: The molecular sequence of this clone aligns with the gene accession number as a point of reference only. However, individual transcript sequences of the same gene can differ through naturally occurring variations (e.g. polymorphisms), each with its own valid existence. This clone is substantially in agreement with the reference, but a complete review of all prevailing variants is recommended prior to use. [More info](#)

OTI Annotation: This clone was engineered to express the complete ORF with an expression tag. Expression varies depending on the nature of the gene.

Components: The ORF clone is ion-exchange column purified and shipped in a 2D barcoded Matrix tube containing 10ug of transfection-ready, dried plasmid DNA (reconstitute with 100 ul of water).

Reconstitution Method:

1. Centrifuge at 5,000xg for 5min.
2. Carefully open the tube and add 100ul of sterile water to dissolve the DNA.
3. Close the tube and incubate for 10 minutes at room temperature.
4. Briefly vortex the tube and then do a quick spin (less than 5000xg) to concentrate the liquid at the bottom.
5. Store the suspended plasmid at -20°C. The DNA is stable for at least one year from date of shipping when stored at -20°C.

RefSeq: [NM_019967.2](#), [NP_064351.2](#)

RefSeq Size: 3354 bp

RefSeq ORF: 2283 bp

Locus ID: 56710

UniProt ID: [Q920P3](#)

Cytogenetics: 4 C1

Gene Summary: Inhibits cell proliferation by negative regulation of the G1/S transition. Mediates cell death which is not of the classical apoptotic type and regulates expression of components of the plasminogen pathway.[UniProtKB/Swiss-Prot Function]