

Product datasheet for **MG210504**

Emilin3 (NM_182840) Mouse Tagged ORF Clone

Product data:

Product Type:	Expression Plasmids
Product Name:	Emilin3 (NM_182840) Mouse Tagged ORF Clone
Tag:	TurboGFP
Symbol:	Emilin3
Synonyms:	1110013O17Rik; EMILIN-3; EMILIN-5; EMILIN-T; Emilin5
Mammalian Cell Selection:	Neomycin
Vector:	pCMV6-AC-GFP (PS100010)
E. coli Selection:	Ampicillin (100 ug/mL)



[View online »](#)

ORF Nucleotide Sequence:

>MG210504 representing NM_182840
 Red=Cloning site Blue=ORF Green=Tags(s)

TTTTGTAATACGACTCACTATAGGGCGGCCGGAATTCGTCGACTGGATCCGGTACCGAGGAGATCTGCC
 GCC**CGCATCGCC**

ATGGGCCCGCTCTGTCCGTGTGGCTGTGCACCGTCGCGGCGCTGCTCTCGGGGGCGCAGGCCAAGGGCA
 CCCTCTCCTCGCGCGGCCCGCACAGCCAGTGCCTCCCGTTACAGCCTCTACACCACCGGATGGCGTCC
 GCGGCTGCGCCCGGGCCACACAAGTCTCTGTGCCTATGTGGTACACAGAAATGTGACCTGCGTCTTA
 CAAGAAGGAGCAGAGAGCTATATAAAGGCTGAGTACCGGAACTGTGGTGGGGACCCAAGTCCCTTCAA
 CAGTCAGGTACCGCACAGTGTTCAGACCCAGATACAAGATTGGCTACAAGACCGTGACAGACCTGGCGTG
 GCGCTGCTGCCCTGGTCTTACTGGGAAAGCTGCCCTGAACACCTCACAGACCATGGAGCCACCCACCC
 CACCAGGAGCCAGAGCCTCAGATTCCCTTGGGGCAGCTGGGCCAGGTCCAGGCCTTCTCCTTACAGCA
 GAGAGGCCCGCGCCCGTGAAGAAAAGGCCAAGGGCCGTTTGGTGGCGGCTAGAACAGCGCCTGTC
 GCAAGCATATGGCACCTGAGTGGATTGGTAGCCAGCCAGAGAATCCCAATAGGATCAGTGGTACTCC
 AGGGCCCTGTGCTACCTATAGGCTTTGGGGTCAATCCCGAGGGTCTTGTGGCCCAAGAAGCAGAGGCA
 GAGGACCACTCATCCCTCCTCTGAGTGAGATCCTGAGCAAGGTACAGAGGTGAGCAACACATTACAGAC
 CAAGGTGCAGCTGTTAGATGAGGTGCGTGGGCTGGCCCTGGGGCATGAGGCTCACCTGCAGCGGCTCCGG
 GAAGCCCCGCCATCCCGCTGACCTCCTTAGCGCTCCTAGAGGAATACGTGGACCAGCGGCTGCAGCGAC
 TCTGGGGGAGCCTGTGGATGGCTTTGAGCAGAAGCTGCAAGGTGTCCAGAGCGAGTGTGACCTTCGGGT
 GCAAGAGGTGCGGCAGCAATGTGAGGAGGGCCAGGCAGCCAGCCAGCGCTTGCATCAGAGCCTCGATGGC
 CGAGAGCTTGCCTTGGTTCGGTGGGAGCTCTCCAGCTGGGCACTCAGCTGCAGGGCTTACTCTGACTGGTG
 GGGCACCTGCTGCAGCCAAGTGGCTTTGATCAGTCCCCGGGTGGACAGCCTTGAAGAACTGCAGGC
 TGTCACTGAGACCAAGGTGGCCCGGGCACCTTGCCCGCGGATGAGCTTGCAGCCTCTCTGCAGCTATG
 CTTGAGGAGGTGTGGACGGGCTGCTTGAAGCCTTGAAGTATCAATGGGACAGAGAATGGAGCAAGGG
 GCTGCTGTCTGAGAATGGAGGTGGGGGGCTGGGGTGTCCGGTGGCTTCGGGTCCACGCTGGAACAGCGAGT
 GCAGAGCCTAGAGGAGCGGCTGGCAACTGACCCGGAGAGCTAAGCCCCGAGAGTGCCATACCAGACAGA
 TCAGCGCGGCCGCTTGTTCATTCAAGACTAGCAGTACTGGAACAAAGGCTGGTGTCCCTGGAGACCTCGT
 GCACCCCAAGTACCACCACAGCCATCCTGGACAACCTCGTGGCAGAGGTGAAGGCCTGGCAGAGCCGGAG
 CGAGGCTCTCCTACACCAGGTGGCTCGTCACACTGCCCTGCTCCAACAGCTCAATGGCACGGTAGCTGAA
 GTCCAGGGGCGAGCTGGCAGAAGGGACAGGCAGCTCACTGCAAGGGGAGATCACTCTTTGAAAGTCAACC
 TGAAGTCAAGTGAAGTCACTACGGGCTCAGCGACTCTGTCAGCCAGTACTCTGATGCCTTCTCGGC
 TGCCAACACATCCCTGGATGAACGAGAAGAGTGAAGCCGAGGTCCACACCATCCAGGAACAGATC
 AGCAGCCAGGGCTCACGGCTTACGGCTGGCCACAGGCAGGTCTGAACTGCGAGGGGAGCTGGAGCAAC
 TCAAGGCTGGCATGGCCAATGTGGCTAGAGGGTTGAGCCGCTGCCGGGACACAGCCAGGAACTCCAGCA
 TACAGTGGGCCACTTTGACCAGAGGGTGGCCCAAGTGAAGGAGCATGTGAGAGGTTGGGCTGTTGGCA
 ACCCACCTGAACAGTCTGCCTACTGAGCAGCTGAGGTCCAGGGAGGGCTGTGGGGCCACATAGACAAGC
 TGAACACACATTGGCCAGCACACGCAGGATATCGCCCGGCTCCGGGATGACCTGTTGGACTGCAGAGC
 TCAGCTGGCTGAGGTGAGGCCAGGGCAGCTGAC

ACGCGTACGCGGCCGCTCGAG - GFP Tag - GTTTAA

Protein Sequence: >MG210504 representing NM_182840
 Red=Cloning site Green=Tags(s)

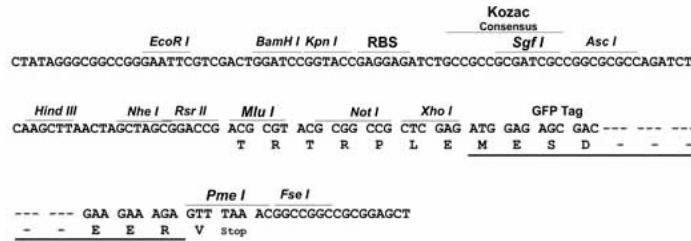
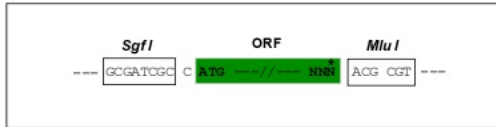
MGRRLSVWLCTVAALLSGAQAKGTPLLARPAQPSASRYSLYTTGWRPRLRPGPHKSLCAYVVHRNVTCVL
 QEGAESYIKAEYRNCGWPNPCSTVRYRTVFRPRYKIGYKTVTDLAWRCCPGLTGESCPEHLTDHGATPP
 HQEPEPIPLGQLGPGPRPSPYSREAPRPRGRKGQPFGERLEQRLSQAYGTL SGLVASHENPNRITGDS
 RAPVVPIGFGVIPEGLVAPEDRGRGPLIPPLSEILSKVTEVSNTLQTKVQLLDEVRLALGHEAHLQRLR
 EAPPSPLTSLALLEEYVDQRLQRLWGSLLDGFQKLGQVQSECDLRVQEVQRQCEEGQAASQRLHQSLDG
 RELALRRELSQLGTQLQGLTLTGGGTCCSQLALI SARVDSLERNLQAVTETQGGPGTLAADELARLSAAM
 LQGGVDLLEGLETINGTENGARGCCLRMEVGGWVGFGSTLEQRVQSLEERLATLTGELSPESAIPDR
 SARPLVHSELAVLEQRLVSLTSCTPSTTTAILDNLVAEVKAWQSRSEALLHQVARHTALLQQLNGTVAE
 VQGQLAEGTGSSLQGEITLLKVNLSVSKSLTGLSDSVSQSDAFSAANTSLDERERRVEAEVHTIQEQI
 SSQGSRLQAGHRQVNLNRGELEQLKAGMANVARGLSRCRDTAQELQHTVGHFDQRVAQVEGACERLGLLA
 THLNSLPTEQLRSREGLWGHIDKLNHTLAQHTQDIARLRDDLLDCRAQLAEVVRPGRAD

TRTRPLE - GFP Tag - V

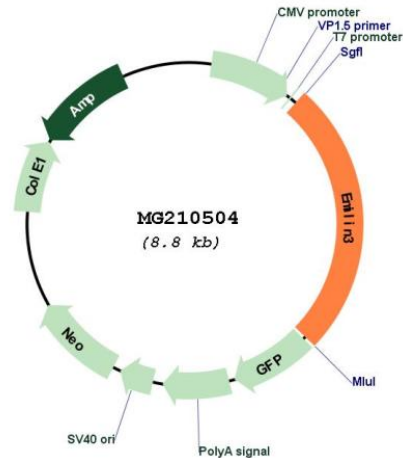
Restriction Sites: SgfI-MluI

Cloning Scheme:

Cloning sites used for ORF Shutting:



Plasmid Map:



ACCN: NM_182840

ORF Size: 2274 bp

OTI Disclaimer: The molecular sequence of this clone aligns with the gene accession number as a point of reference only. However, individual transcript sequences of the same gene can differ through naturally occurring variations (e.g. polymorphisms), each with its own valid existence. This clone is substantially in agreement with the reference, but a complete review of all prevailing variants is recommended prior to use. [More info](#)

OTI Annotation: This clone was engineered to express the complete ORF with an expression tag. Expression varies depending on the nature of the gene.

Components: The ORF clone is ion-exchange column purified and shipped in a 2D barcoded Matrix tube containing 10ug of transfection-ready, dried plasmid DNA (reconstitute with 100 ul of water).

Reconstitution Method:

1. Centrifuge at 5,000xg for 5min.
2. Carefully open the tube and add 100ul of sterile water to dissolve the DNA.
3. Close the tube and incubate for 10 minutes at room temperature.
4. Briefly vortex the tube and then do a quick spin (less than 5000xg) to concentrate the liquid at the bottom.
5. Store the suspended plasmid at -20°C. The DNA is stable for at least one year from date of shipping when stored at -20°C.

RefSeq: [NM_182840.2](#), [NP_878260.1](#)

RefSeq Size: 3577 bp

RefSeq ORF: 2277 bp

Locus ID: 280635

UniProt ID: [P59900](#)

Cytogenetics: 2 H2