

Product datasheet for **MG210486**

Mapk7 (BC100398) Mouse Tagged ORF Clone

Product data:

Product Type:	Expression Plasmids
Product Name:	Mapk7 (BC100398) Mouse Tagged ORF Clone
Tag:	TurboGFP
Symbol:	Mapk7
Synonyms:	BMK1, ERK5, PRKM7, Erk5-T
Mammalian Cell Selection:	Neomycin
Vector:	pCMV6-AC-GFP (PS100010)
E. coli Selection:	Ampicillin (100 ug/mL)



[View online »](#)

ORF Nucleotide
Sequence:

>MG210486 representing BC100398
Red=Cloning site Blue=ORF Green=Tags(s)

TTTTGTAATACGACTCACTATAGGGCGGCCGGAATTCGTCGACTGGATCCGGTACCGAGGAGATCTGCC
GCC**CGCATCGCC**

ATGGCCGAACCGCTGAAGGAGGAGGACGGCGAAGATGGCTCTGGGGAGCCCCCTGGGAGGGTGAAGGCAG
AACCCGTTACACCGCTGCCTCTGTGGTGGCCAAGAACCCTGGCCCTGCTCAAAGCCCGCTCCTTCGACGT
GACCTTTGACGTGGGGGACGAGTACGAGATCATCGAGACCATAGGCAATGGGGCCTACGGGGTGGTGTCT
TCGGCGCGCCCGCCTCACGGGCCAGCAGGTGGCCATCAAGAAGATACCTAATGCTTTTGTGATGGTGA
CCAATGCCAAACGGACCCTCAGGGAGCTGAAGATCCTCAAACACTTCAAACACGACAATATCATGCCAT
CAAGGACATCCTGAAGCCTACTGTGCCCTATGGAGAATTCAGATCTGTCTATGTGGTACTGGACCTCATG
GAGAGCGACCTACACCAGATCATTCACTCTTACAGCCGCTCACCTGGAACATGTGAGATACTTCTGT
ACCAGTGTCTTCGGGGCCTCAAATACATGCACTCTGCTCAGGTCATCCACCGTATCTTAAACCCTTAA
CCTTCTGGTCAATGAGAAGTGTGAGCTCAAGATCGGTGACTTTGGAATGGCCCGTGGTCTCTGTACTTCC
CCTGCCGAGCACCAGTACTTCATGACTGAGTATGTGGTACTCGCTGGTACCGTGGCCCGGAGCTCATGC
TTTCCCTGCACGAGTATACGCAGGCAATCGACCTCTGGTCTGTGGGCTGCATCTTTGGTGAAGTGCATGGC
TCGGCGCCAGCTCTCCAGGCAAAAACACTGTCACCCAGTTACAGCTGATCATGATGGTGTGGGAACT
CCGTACCCAGCTGTGATTCAGGCTGTGGGGGCTGAAAGGGTGCAGCCTATATCCAGAGCCTGCCACCAA
GGCAACCTGTGCCTTGGGAGACAGTATACCCAGGTGTGACCGCCAGGCCCTCTCCCTGTGGGACGCAT
GTTGCGATTTAAACCCAGTGCCGAATCTCAGCTGCTGCTGCCCTTCGCCACCCCTTCTGGCTAAGTAC
CATGACCCTGATGATGAGCCTGATTGCGCCCCACCTTTGACTTTGCTTTTGACCGTGAAGCCCTTACCA
GGGAGCGCATTAAAGGAGGCCATTGTGGCTGAGATTGAGGACTTCCACGCACGACGGGAGGGCATCCGCCA
ACAAATCCGCTTCCAGCCTTCTCTGCAGCCTGTGGCTAGTGAGCCTGTGTGTCCAGATGTTGAGATGCC
AGTCCCTGGGCTCCAAGTGGAGACTGTGCCATGGAGTGCCTCCTCCAGCACTGCCACCATGCTCTGATC
CTGCACCTGACACCGTTGATCTGACTCTGCAGCCTGCCCGCCGCGCCAGTGAAGTGTCTCCACAAAAAG
AGAGGGTGCCATCTCCGACAATACCAAAGCAGCCCTCAAAGTGCCTGCTCAAGTCCCTAAGGAGCAGG
CTCAGAGATGGGCCAGTGCACCCTTGGAGGCGCCTGAGCCTCGAAAGCCCGTGAAGCTCAGGAACGCC
AGCGGGAACGAGAAGAGAAGCGCAGGAGGCGACAAGAGAGGCCAAGGAGCGGGAGAAGCGACGACAAGA
GAGAGAACGCAAGGAGAGGGGGCTGGTACCTTGGGGGGCCCTCTACTGACCCTCTGGCTGGACTGGT
CTCAGTGACAATGACCGAAGCCTGCTAGAGCGGTGGACTCGCATGGCTAGGCCTCCTGCCCTGCCCTG
CCCCAGCGCCAGCACCAGCGCCAGCACCCTCTGCCCCAGCCACTAGTACTCCTACTGCCCCCGTATC
TCAGTCTACTGGTCTCTACAGCCTGCAGGCTCTATTCCGGGTCCTGCCTCCCAGCCTGTTTGCCACCC
CCTGGCCCTGTTCCCGAGCCTGTGGCCCTATCCCTGCTCCGCTCCAGACTGCCCTTCCACTAGCCTTT
TGGCCTCCAGTCACTTGTGCCACCTAGTGGGTTGCCTGGTCTGGTGGCCCGAAGTCTGCTTACTT
CCCATCTGGCCACCACCTCCAGATCCTGGGCTCACCCCTCAGCCTTCTACATCAGAGTCACCTGATGTC
AACCTGGTGAAGCAGCTGTCCAAGTCTCAGGTGGAGGACCCCTGCCTCCTGTGTTCTCTGGCACTC
CAAAGGGCAGTGGGGCTGGCTACGGAGTTGGCTTTGATCTGGAGGAATCTTAAATCAATCTTTGATAT
GGGTGTGGCTGATGGCCACAGGATGGC

ACGCGTACGCGGCCGCTCGAG – GFP Tag – GTTTAA

Protein Sequence: >MG210486 representing BC100398
 Red=Cloning site Green=Tags(s)

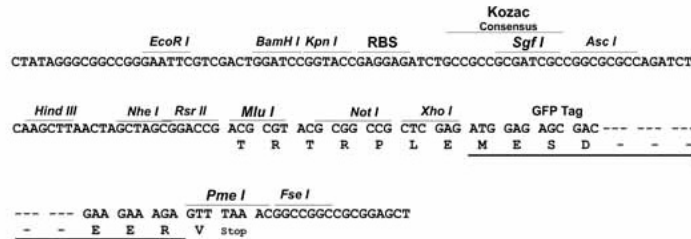
MAEPLKEEDGEDGSGEPPGRVKAEPVHTAASVVAKNLALLKARSFDVTFDVGDEYEIIETIGNGAYGVVS
 SARRRLTGQQVAIKKIPNAFDVVTNAKRTLRELKILKHFKHDNIIA IKDILKPTVPYGEFRSVYVLDLM
 ESDLHQIIHSSQPLTLEHVRYFLYQLLRGLKYMHTSAQVIHRDLKPSNLLVNENCKLIGDFGMARGLCTS
 PAEHQYFMTEYVATRWYRAPELMLSLHEYTQAIDLWSVGCIFGEMLARRQLFPGKNYVHQLQLIMMVLGT
 PSPAVIQAVGAERVRAYIQSLPPRQPVPWETVYPGADRQALSLLGRMLRFKPSARISAAAAALRHPFLAKY
 HDPDDEPDCAPPDFDAFDREALTRERIKEAIVAEIEDFHARREGIRQQIRFQPSLQPVASEPVCVDVEMP
 SPWAPSGDCAMESPPPALPPCSDPAPDVTDLTLQPAPPASELAPPKREGAISDNTKAALKAAALLKSLRSR
 LRDGPSAPLEAPEPRKPVT AQERQREEREKRRRRQERAKEREKRRQERERKERGAGTLGGPSTDPLAGLV
 LSDNDRSLLERWTRMARPPAPAPAPAPAPAPAPSSAQPTSTPTGPVSQSTGPLQPAGSIPGPASQVPCPP
 PGPVQPAGPIAPLQTAPSTLLASQSLVPPSGLPGSGAPEVLPYFSPGPPPPDGLTPQSTSESPDV
 NLVTQQLSKSQVEDPLPPVFSGTPKSGGAGYGVGFLEEF LNQSFDMGVADGPQDG

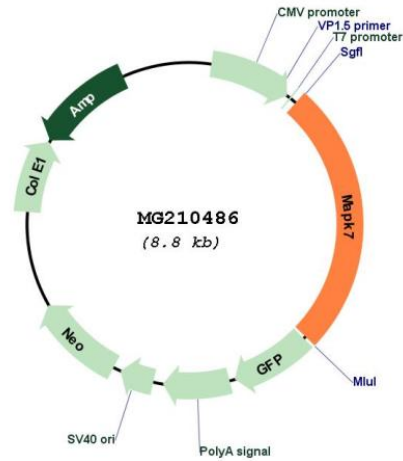
TRTRPLE - GFP Tag - V

Restriction Sites: SgfI-MluI

Cloning Scheme:

Cloning sites used for ORF Shutting:



Plasmid Map:


ACCN: BC100398

ORF Size: 2270 bp

OTI Disclaimer: The molecular sequence of this clone aligns with the gene accession number as a point of reference only. However, individual transcript sequences of the same gene can differ through naturally occurring variations (e.g. polymorphisms), each with its own valid existence. This clone is substantially in agreement with the reference, but a complete review of all prevailing variants is recommended prior to use. [More info](#)

OTI Annotation: This clone was engineered to express the complete ORF with an expression tag. Expression varies depending on the nature of the gene.

Components: The ORF clone is ion-exchange column purified and shipped in a 2D barcoded Matrix tube containing 10ug of transfection-ready, dried plasmid DNA (reconstitute with 100 ul of water).

Reconstitution Method:

1. Centrifuge at 5,000xg for 5min.
2. Carefully open the tube and add 100ul of sterile water to dissolve the DNA.
3. Close the tube and incubate for 10 minutes at room temperature.
4. Briefly vortex the tube and then do a quick spin (less than 5000xg) to concentrate the liquid at the bottom.
5. Store the suspended plasmid at -20°C. The DNA is stable for at least one year from date of shipping when stored at -20°C.

RefSeq: [BC100398](#), [AAI00399](#)

RefSeq Size: 3077 bp

RefSeq ORF: 2270 bp

Locus ID: 23939

Cytogenetics: 11 B2

Gene Summary: Plays a role in various cellular processes such as proliferation, differentiation and cell survival. The upstream activator of MAPK7 is the MAPK kinase MAP2K5. Upon activation, it translocates to the nucleus and phosphorylates various downstream targets including MEF2C. EGF activates MAPK7 through a Ras-independent and MAP2K5-dependent pathway. May have a role in muscle cell differentiation. May be important for endothelial function and maintenance of blood vessel integrity. MAP2K5 and MAPK7 interact specifically with one another and not with MEK1/ERK1 or MEK2/ERK2 pathways. Phosphorylates SGK1 at Ser-78 and this is required for growth factor-induced cell cycle progression (By similarity). Involved in the regulation of p53/TP53 by disrupting the PML-MDM2 interaction (By similarity). [UniProtKB/Swiss-Prot Function]