

Product datasheet for **MG210482**

Setdb1 (BC079537) Mouse Tagged ORF Clone

Product data:

Product Type:	Expression Plasmids
Product Name:	Setdb1 (BC079537) Mouse Tagged ORF Clone
Tag:	TurboGFP
Symbol:	Setdb1
Synonyms:	ESET, mKIAA0067
Mammalian Cell Selection:	Neomycin
Vector:	pCMV6-AC-GFP (PS100010)
E. coli Selection:	Ampicillin (100 ug/mL)



[View online »](#)

ORF Nucleotide
Sequence:

>MG210482 representing BC079537
Red=Cloning site Blue=ORF Green=Tags(s)

TTTTGTAATACGACTCACTATAGGGCGGCCGGAATTCGTCGACTGGATCCGGTACCGAGGAGATCTGCC
GCCGCGATCGCC

ATGTCCTCCCTCCCTGGGTGCATGAGTTTGGCTGCAGCGCCAGCTGCAGTCTGCAGAGATTGCTG
AGCTGCAGCAGGCGGTGGTTGAAGAGCTGGGTATCTCTATGGAGGAACCTCGTCAGTACATTGATGAGGA
ACTGGAAGATGGACTGCATACAGCAGCGCAAGAAGCAGCTCGCAGAGCTGGAGACGTGGTACTACAG
AAAGAGTCTGAAGTGGCTTATGTTGATCGGCTGTTTATGATGATGCCAGGGAAGTACTAACTGTGAGT
CTTTGGTGAAGGATTTCTACTCTAAGCTGGGACTACAGTATCATGACAGTAGCTCTGAGGATGAAGCTTC
CCGGCCACAGAGATCATTGAGATTCCTGATGAAGATGATGATGCCTCAGTATTGATTCAGGTGATGCT
GGGAGCAGAACTCCAAAAGACCAGAAGCTTCGTAAGCTATGGCTGCCTAAGAAAATCAGCTCAAGATG
TCCAGAAGTTCATGGATGCTGTCAACAAGAAAAGCAGTTCTCAAGATCTACATAAAGGAACCTTGGGTCA
GGTGTCTGGAGAAGTCTGAGCAAGATGGGACCTGATAGTCAGCATGCGGATTCTGGGCAAGAAGAGGACT
AAGACATGGCACAAAGGCCACCTTATTGCCATCCAGACTGTTGGGCTAGGAAAAAATACAAAGTGAAT
TTGACAACAAAGGAAAGAGTCTGCTATCTGGGAACCATATTGCCTATGATTACCACCTCCCGCTGACAA
GCTGTTTGTGGGACGTCGAGTGGTGGCCAAAGTACAAAGATGGAATCAGGTCTGGCTTTATGCTGGCATT
GTAGCTGAGACCCCTAACGTCAAGAACAAGCTCAGATTTTTAATTTTTTTGATGATGGCTATGCTTCTCT
ATGTCAGTCACTCAGTCAAGGCTTTATCCCATTTGCCGACCACTAAAAAAGACTTGGGAGGACATAGAAGATAG
CTCCTGCCGAGACTTCATAGAGGAATATCACTGCCTATCCAAACCGCCCAATGGTACTTCTCAAGAGT
GGGCAGCTTATCAAGACTGAGTGGGAAGGCACATGGTGGAAAGTCTCGAGTTGAAGAGTGGATGGCAGCC
TAGTCAGGATCCTCTTTCTGGATGACAAAAGATGTGAGTGGATATATCGAGGCTCTACACGCTGGAACC
TATGTTTTAGTATGAAGACATCCTCAGCCTCTGCAATGGAGAAGAAGCAAGGGGGCAACTCAGAACCCTG
CCTAATATGGGTCTGTGAGGAGCAAAGGTCTGTTGTTCAAGTATACACAGGATCTAACTGGTACTGGAA
TCCAGTTAAGCCATGGAGCCCTACAGCCTATAGCTCCACCGGCCCACTTCTATACCTCCTCTTTC
CCCCAAGCAGCTGACTGACTTAGAAAGCCAACCTGCACAATCACGAAACAAGTAGCCAAGAAGAGC
ACATCATTCCGACCAGGATCTGTGGGCTCCGGCCATTCTCCCTACTTCATCCACTCAGTGAAGATG
TGTCTGCTGGGAACTTGGGATAAACCAGACATATCGGTACCTTTGGCCTCAGTAACTCTACCCAGC
ATCTGCAGCCCTCCAGTCCCTCAGTCCACAGGGCCTCAACCCCTCCAGGGCTCCAGCTCCTCCA
GGCCTCTAGCTCCTCCAGCCTTCCATGGCATGTTAGAGCGGGCACCAGCTGAGCCCTCTACCGAGCCC
CCATGGAGAAGCTTTCTATTTACCTCATGTCTGCAGTTACACTTGTGTTTCCCGGATCAGACCCATGAG
AAACGAACAGTATCGGGCAAGAACCCTCTATTAGTTCACCTTCTGTATGACTTCCGGAGGATGACAGCA
CGGCGCAGAGTTAACCGCAAAATGGGCTTTTATGTAATCTATAAGACACCTGTGGTCTCTGCCTTCGGA
CGATGCAGGAGATAGAGCGCTACCTTTTGGAGACTGGCTGTGACTTTCTGTTCTCTGGAGATGTTCTGTT
GGATCCATATGTTCTTGTGACAGAAAGTTTCAACCCCTTAAGCCTTTTACTATATTTGGACATCACC
TATGGCAAGGAAGATGTTCCCTGTCTGTGTTAATGAGATTGACACAACCTCCCCACCCAGGTGGCCT
ACAGCAAGGAACGCATTCCTGGCAAGGGTGTTCATTAACACAGGCCCTGAATTTCTGGTTGGCTGTGA
CTGCAAGGATGGGTGTCGGGATAAG

ACGCGTACGCGGCCGCTCGAG – GFP Tag – GTTTAA

Protein Sequence: >MG210482 representing BC079537
 Red=Cloning site Green=Tags(s)

```
MSSLPGCMSLAAAPAAADS AEI AELQQAVVEELGISMEELRQYIDEELEKMDCIQQRKKQLAELETWVLQ
KESEVAYVDRLFDDASREVTNCESLVKDFYSKLGLOYHDSSEDEASRPTEIIEIPDEDDDLVIDSGDA
GSRTPKDQKLREAMAALRKS AQDVQKFM DAVNKKSSSQDLHKGTLGQVSGELSKDGLIIVSMRILGKKRT
KTWHKGTLIAIQTVGLGKKYKVKFDNKGKSLLSGNHIA YDYHPPADKLFVGSRVVAKYKDGNOVWLYAGI
VAETPNVKNKLRFLIFFDDGYASYVTQSELYPICRPLKKTWEDIEDSSCRDFIEEYITAYPNRPMVLLKS
GQLIKTEWEGTWWKSRVEEVDGSLVRILFLDDKRC EWIYRGSTRLEPMFSMKTSSASAMEKKQGGQLRTR
PNMGAVRSKGPVVQYTQDLTGTGIQFKPMEPLQPIAPPAPLIPPLSPQAADTDLESQLAQSRKQVAKKS
TSFRPGSVSGSHSPTSSTLSENVSAGLGINQTYRSPLASVTSTPASAAPPVPPVPPGPPTPPGPPAPP
GPLAPP AFHGM LERAPA EPSYRAPMEKLFYLP HVCSY TCLSRIRPMRNEQYRGKNPLL VPLL YDFRRMTA
RRRVNRKMGFHV IYKTPCGLCLRTMQEIERYL FETGCDFLFLEMFC LDPYV LVD RKFQPFKPFYI LDIT
YGKEDVPLSCVNEIDTTPPPQVAYSKERIPGKGVFINTGPEFLVGCDCCKDGC RDK
```

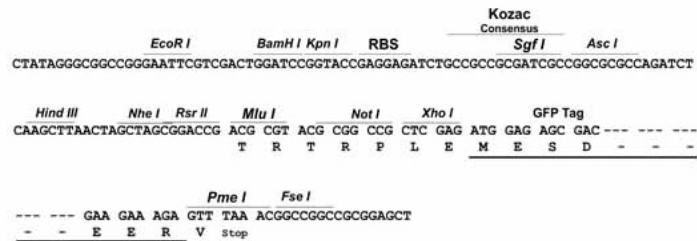
TRTRPLE - GFP Tag - V

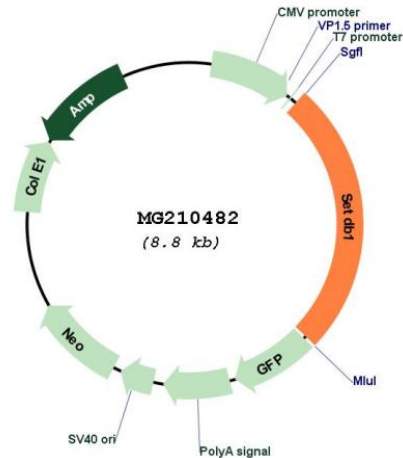
Restriction Sites:

SgfI-MluI

Cloning Scheme:

Cloning sites used for ORF Shutting:



Plasmid Map:


ACCN: BC079537

ORF Size: 2267 bp

OTI Disclaimer: The molecular sequence of this clone aligns with the gene accession number as a point of reference only. However, individual transcript sequences of the same gene can differ through naturally occurring variations (e.g. polymorphisms), each with its own valid existence. This clone is substantially in agreement with the reference, but a complete review of all prevailing variants is recommended prior to use. [More info](#)

OTI Annotation: This clone was engineered to express the complete ORF with an expression tag. Expression varies depending on the nature of the gene.

Components: The ORF clone is ion-exchange column purified and shipped in a 2D barcoded Matrix tube containing 10ug of transfection-ready, dried plasmid DNA (reconstitute with 100 ul of water).

Reconstitution Method:

1. Centrifuge at 5,000xg for 5min.
2. Carefully open the tube and add 100ul of sterile water to dissolve the DNA.
3. Close the tube and incubate for 10 minutes at room temperature.
4. Briefly vortex the tube and then do a quick spin (less than 5000xg) to concentrate the liquid at the bottom.
5. Store the suspended plasmid at -20°C. The DNA is stable for at least one year from date of shipping when stored at -20°C.

RefSeq: [BC079537](#), [AAH79537](#)

RefSeq Size: 5687 bp

RefSeq ORF: 2267 bp

Locus ID: 84505

Cytogenetics: 3 F2.1