

Product datasheet for **MG210459**

Adam32 (NM_153397) Mouse Tagged ORF Clone

Product data:

Product Type:	Expression Plasmids
Product Name:	Adam32 (NM_153397) Mouse Tagged ORF Clone
Tag:	TurboGFP
Symbol:	Adam32
Mammalian Cell Selection:	Neomycin
Vector:	pCMV6-AC-GFP (PS100010)
E. coli Selection:	Ampicillin (100 ug/mL)



[View online »](#)

ORF Nucleotide Sequence:

>MG210459 representing NM_153397
 Red=Cloning site Blue=ORF Green=Tags(s)

TTTTGTAATACGACTCACTATAGGGCGGCCGGGAATTCGTCGACTGGATCCGGTACCGAGGAGATCTGCC
 GCC**GCGATCGCC**

ATGCTGGGCGCCATGCTGCACACTGCTGCTGCTGCTGCTGCGCGAGCTGGGGCCTTGTGTCATCAG
 GACCCGAGTCTCAAAGTTCATTTCTAGAAATCATATTTCCAGAGAAAATTGAAGATAAAACACACTCAGA
 AGAACAGATATCCTATATTATTCCAATAAAACAAGAAGCAGTACACTGTGCACCTCCAGAAAAGATATTTT
 TTAACGAATCGTTTTATGGTTTTATGTATAATCAAGGATCTACAAGTTTTATTCTCCAAACATCCGG
 CTCAGTGTATTATCAAGGACACATCAAAGGCTACCCGAAGTCAAGTGCACCCCTCAGCACATGCTCTGG
 ACTGAGAGGGTTCCTGCAGTTTGAAGATGTGTCTACGGAATTGAGCCTCTGCAATCTGCATTTACATCT
 CAACACATTGTTTATAAGCTAGGGAACAAAGAGAAGGAGTTGATATTTAACAAAAACAGCAGAAACATAG
 AGATGCCTACAACTATGGCATTATAATCAACAAAAAGCCAAAATCACCTTTTAAAAACTGTTTCCCT
 CTATCTAGAGATGAGTATTGTGGTGGACAAAGCGCTGTATGATTACTTGGGCTCTGACAGCAATATTGTA
 ACAAATAAAATCATTGAAATTATCAGTCTTATAAATTCAGTGTTCGCCAACTCAAGTTACTATCGTGT
 TGTCTCATTGGAGTTGTGGTCAGATAAGAATAAGATTCTACAGTTGGTGAAGCAGATGAATTATTGCA
 TAAATTTCTAGAATGGAAGCAGGCTACCTTACCCTAAGACCTCATGATGTTGCATATCTATTCAATTTAT
 AACGAGTACCCAAATTACATGGGAGCAAGTATCCTGGGAAGATGTGACTGCCACTACTCTGCAGGAA
 TCACAATGTACCCAAAGGATATGACCTTGGAGGCTTTTCGGTTATTCTCACCCAAATGCTGGGGCTCAG
 TCTGGGATATCGTATGATGAGCCTGAGAAATGCTACTGCTCGGAATCCATCTGCATCATGAATCCCAGG
 GCGATGCAATATGGAGGTGTGAAGTCAATAGCAATTGCAGTTTGAATGACTTTGAACATTTTAAATCGA
 ACGAGGGTGCCAAATGTCTGCAGAATAAGCCACAGATGCAAAGGACTGCAGCAGCGGCTGCGGAAATGG
 CAAGGTGGAGGGTATGAAATTTGTGACTGTGGCTCTGAAGCAGAATGTGGCCTGATAGCTGTTGTGAA
 CCTAACAGATGTGTTCTGAAAGCAGGAAGAGCTTGTGACAGTAAGTCTCCCTCATCAACATGCTGCAAAA
 ATTGTCAATTTTTACCAGAAAAACATCAATGTAGGCCGAAAAGCATCTATACTGTGACATTCCTGAAGT
 CTGCAATGGGAGCTCAGGAAATGTCCACCTGATGTAACATAAACAATGGGCATGTTTGCAAAGAAAGC
 GGGACTATCTGTTATAATGGAGACTGTCCGACCTGGACAGGGTGTGCGAGTCAATATATGGAGCAGGT
 CAGTGAATGCTCCATTTGCCTGCTATGAAGAAATCCAGGGCCAAAATGATAGGTTTGGCAACTGTGGCAA
 AGACAACCGAAACAGATATGTGTTCTGTGGATGGAGGAATCTCATATGTGGGAGATTGATTTGTACGTAC
 CCTACCCGAATGCCTTACAACCCACCAATAACAGTACAGCTTCTGTGATCTATGCTTTTGTGCGAGACA
 AAGTGTGTATAACTGTGGACTTTGGATCGAGTGTCAAAGAAGATCCACTCAGGGTTGCTAATGGTGTAC
 ATGTGATCTTGATAGGATCTGCTTAAATGGCGTGTGCGTAGAATCGAGATTTCTTAGGGATCAATCAAAA
 ACGTGTTCATCCAAGTGCACCGGAACGGAGTGTGCAATTCATGGTGTCTGCCACTGCAATGCCGGCT
 ACTCACCTCCCAACTGTCAATATCCTACGACAAAAAGGTGAGCATCGCTGTGGTCTGGCAAGCAGCATCT
 GCCCATGGAAAGAGCATCTAAGAACCAAGAAAAGAAGTGGCTTTTAAGTTTGTACATTGTCTTAATTATC
 CTCGCTTCAGTGTTCCTCATAGGCACAGGGTGGAAAGGCTTGAACAGTGCAGGTTCCAAGGAAGAGGAGT
 CCATGAGTAGCGAAAGCAAATCAGAAGACAGCACTTACACGTATGTCAGCAGATCAACTTCTGAGACAAG
 CAGTATGACATCTACGAGCAGT

ACGCGTACGCGGCCGCTCGAG - GFP Tag - GTTTAA

Protein Sequence: >MG210459 representing NM_153397
 Red=Cloning site Green=Tags(s)

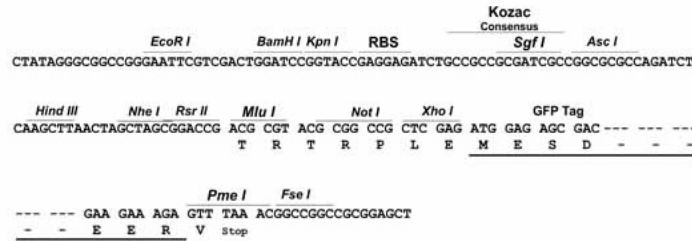
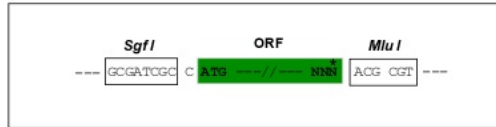
MLGAMLHTLLLLLAE L GALLASGPESQSSFL E I I FPEKIEDKTHSEEQ I S Y I I P I N K K Q Y T V H L Q K R Y F
 L T N R F M V M Y N Q G S T S F H S P N I P A Q C Y Y Q G H I K G Y P N S V A T L S T C S G L R G F L Q F E N V S Y G I E P L Q S A F T S
 Q H I V Y K L G N K E K E L I F N K N S R N I E M P T N Y G I L I N K K P K S P F K N L F P L Y L E M S I V D K A L Y D Y L G S D S N I V
 T N K I I E I I S L I N S V F A Q L K V T I V L S S L E L W S D K N K I P T V G E A D E L L H K F L E W K Q A Y L T L R P H D V A Y L F I Y
 N E Y P N Y M G A T Y P G K M C T A H Y S A G I T M Y P K D M T L E A F S V I L T Q M L G L S L G I S Y D E P E K C Y C S E S I C I M N P R
 A M Q Y G G V K S F S N C S L N D F E H F K S N E G A K C L Q N K P Q M Q R T A A A V C G N G K V E G D E I C D C G S E A E C G P D S C C E
 P N R C V L K A G R A C D S K S P S S T C C K N C Q F L P E K H Q C R P E K H L Y C D I P E V C N G S S G N C P P D V T I N N G H V C K E S
 G T I C Y N G D C P D L D R V C E S I Y G A G S V N A P F A C Y E E I Q G Q N D R F G N C G K D N R N R Y V F C G W R N L I C G R L I C T Y
 P T R M P Y N P P N N S T A S V I Y A F V R D K V C I T V D F G S S V K E D P L R V A N G A T C D L D R I C L N G V C V E S R F L R D Q S K
 T C S S K C H G N G V C N S H G V C H C N A G Y S P P N C Q Y P T T K R S A S L W S G K H D L P M E R A S K N Q E K K W L L S L Y I V L I I
 L A S V F L I G T G W K G L K Q C G S K E E E S M S S E S K S E D S T Y T Y V S R S T S E T S S M T S T S S

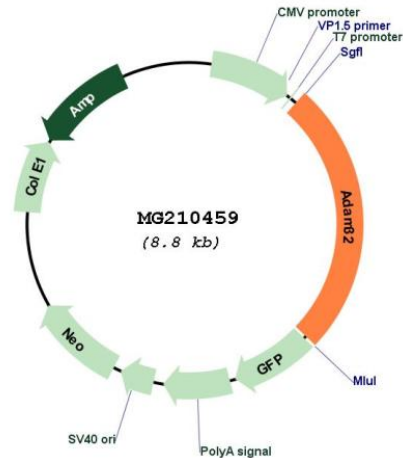
TRTRPLE - GFP Tag - V

Restriction Sites: SgfI-MluI

Cloning Scheme:

Cloning sites used for ORF Shutting:



Plasmid Map:


ACCN: NM_153397

ORF Size: 2262 bp

OTI Disclaimer: The molecular sequence of this clone aligns with the gene accession number as a point of reference only. However, individual transcript sequences of the same gene can differ through naturally occurring variations (e.g. polymorphisms), each with its own valid existence. This clone is substantially in agreement with the reference, but a complete review of all prevailing variants is recommended prior to use. [More info](#)

OTI Annotation: This clone was engineered to express the complete ORF with an expression tag. Expression varies depending on the nature of the gene.

Components: The ORF clone is ion-exchange column purified and shipped in a 2D barcoded Matrix tube containing 10ug of transfection-ready, dried plasmid DNA (reconstitute with 100 ul of water).

Reconstitution Method:

1. Centrifuge at 5,000xg for 5min.
2. Carefully open the tube and add 100ul of sterile water to dissolve the DNA.
3. Close the tube and incubate for 10 minutes at room temperature.
4. Briefly vortex the tube and then do a quick spin (less than 5000xg) to concentrate the liquid at the bottom.
5. Store the suspended plasmid at -20°C. The DNA is stable for at least one year from date of shipping when stored at -20°C.

RefSeq: [NM_153397.2](#), [NP_700446.2](#)

RefSeq Size: 2447 bp

RefSeq ORF: 2265 bp

Locus ID: 353188

UniProt ID: [Q8K410](#)

Cytogenetics: 8 A2

Gene Summary: This gene encodes a member of the disintegrin family of membrane-anchored proteins that play a role in diverse biological processes such as brain development, fertilization, tumor development and inflammation. The encoded protein undergoes proteolytic processing to generate a mature polypeptide comprised of an metalloprotease, disintegrin and epidermal growth factor-like domains. This gene was found to be expressed predominantly in the pachytene spermatocytes, where the processed protein is localized to the sperm surface. This gene is located in a cluster of other disintegrin and metallopeptidase family genes on chromosome 8. Alternative splicing results in multiple transcript variants encoding different isoforms that may undergo similar processing to generate mature protein. [provided by RefSeq, Sep 2015]