

## Product datasheet for **MG210456**

### Mme (BC034092) Mouse Tagged ORF Clone

#### Product data:

Product Type:	Expression Plasmids
Product Name:	Mme (BC034092) Mouse Tagged ORF Clone
Tag:	TurboGFP
Symbol:	Mme
Synonyms:	NEP, CD10, CALLA, 6030454K05Rik
Mammalian Cell Selection:	Neomycin
Vector:	pCMV6-AC-GFP (PS100010)
E. coli Selection:	Ampicillin (100 ug/mL)



[View online »](#)

ORF Nucleotide  
Sequence:

>MG210456 representing BC034092  
 Red=Cloning site Blue=ORF Green=Tags(s)

TTTTGTAATACGACTCACTATAGGGCGGCCGGAATTCGTCGACTGGATCCGGTACCGAGGAGATCTGCC  
 GCCGCGATCGCC

ATGGAAGATCAGAAAGTCAGATGGATATAACTGATATCAATGCTCCAAAGCCAAAGAAGAAACAGCGAT  
 GGACTCCCTGGAGATCAGCCTCTCTGTGCTTGTCTTGCTCCTGACTATCATAGCCGGTGACAATGATCGC  
 TCTCTATGCAACCTATGATGATGGCATTGCAAAATCATCAGACTGCATAAAATCAGCTGCTCGACTGATT  
 CAGAATATGGATGCCTCTGTTGAGCCATGTACAGACTTCTTCAAGTATGCTTGTGGAGGCTGGTTGAAAC  
 GCAACGTCATTCCCGAGACCAGTCCCGATACAGTAATTTTACATTTTAAAGAGATGAGCTAGAAGTCAT  
 TTTGAAAGATGTCCTTCAAGAACCACAACTGAAGACATAGTAGCAGTGCAGAAAGCAAAAACCTTGTAC  
 AGATCGTGATAAATGAGTCTGCTATTGATAGCAGAGGCGGACAACCTCTACTCAAAGTGTACCAGATA  
 TATATGGTGGCCAGTAGCATCAGATAACTGGGATCAAACATATGGCACTTCTTGGACAGCTGAGAAATC  
 CATTGCACAAGTGAATTTAAATATGGGAAAAAGTCTCATTAAATTTTTTTGTTGGCACTGATGATAAG  
 AATTCTACCCAGCATATAATTCATTTTACCAGCCTCGACTTGGCTCCCTCCAGAGACTACTATGAGT  
 GCACTGGAATATATAAGAGGCTTGACAGCATATGTGGATTTTATGATTCTGTGGCCAGACTGATTCCG  
 TCAGGAACAAAGTTTGCCTATTGATGAAAACAGCTCTCTTTGAAAATGAATAAAGTTATGGAATTGGAA  
 AAAGAAATGGCAATGCTACAACATAACAGAGACCGAAATGACCCAATGCTGCTTTATAACAAAATGA  
 CATTGGCCAAGCTGCAGAAACATTTCCCTGGAGGTCAATGGGAAGTCAATCAGCTGGTCAAATTTAC  
 AAATGAAATCATGTCAACTGTGAATATTAATATCAAAATGAGGAAGAAGTTGTTGTCTATGCTCCAGAA  
 TATTTAACCAAATTAAGCCTATTCTTACCAAATATTCTCCAGAGATCTTCAAATTTAATGTCCTGGA  
 GGTTCAATGGATCTTGTAAAGCAGCCTCAGCCGAAACTACAAGGAGTCCAGAAATGCTTCCGCAAGGC  
 CCTTTATGGGACTACATCAGAAACTGCAACATGGAGACGGTGTGCTAACTACGTCATGGGAATATGGAG  
 AATGCTGTGGGAGGCTTTATGTGGAAGCGCTTTTGTGGAGAGCAAGCACGTGTTGAAGACTTGA  
 TTGCACAAATCCGGGAAGTTTTTATTAGACTTTGGATGACCTTACTTGGATGGATGCTGAGACAAAAAA  
 GAAAGCTGAAGAAAAGGCCTTGGCAATTAAGAAAGGATTGGCTATCCTGATGACATCATTTCCAATGAG  
 AACAACTGAATAATGAGTATCTTGAGTTGAACTACAGGGAAGATGAATACTTTGAGAACATAATTCAA  
 ATTTGAAATTCAGCCAAAGCAAGCAGCTAAAGAAGCTCCGAGAAAAAGTGGACAAAGATGAGTGGATAAG  
 TGGAGCAGCTGTAGTCAATGCATTTTATCCTCAGGCCGAAATCAGATAGTCTTCCCGCTGGCATTG  
 CAGCCCCATTCTCAGTCTCAGCAATCCAATCATTGAACTATGGGGCATCGGCATGGTCATTGGAC  
 ATGAAATCACACATGGATTTGATGACAATGGAAGAAATTTCAATAAAGATGGAGACCTCGTTGACTGGT  
 GACGCAGCAGTCGGCAAATAATTTAAAGACCAATCCCAGTGTATGGTATACCAGTATGGAACTTTTCC  
 TGGGACCTAGCAGGTGGACAGCATCTCAATGGAATTAATACACTAGGAGAAAAACATTGCTGATAATGGAG  
 GTATTGGCCAAGCATACAGAGCCTATCAGAATTATGTTAAAAAGAATGGTGAAGAAAAATTAATCCCTGG  
 ACTTGACCTCAATCACAAACATATTTTCTGAACTTTGCCAGGTGTGGTGTGGGACCTACCGGCCA  
 GAGTATGCAGTCAATTTATTAACAGATGTACACAGTCTGGAATTTTCAAGTATTTGGGACTTTGC  
 AGAACTCTGCCGAGTTTGCAGATGCCTTTCATTGCCGCAAGAATTCATACATGAATCCAGAAAGGAAATG  
 TCGGGTTTGG

ACGCGTACGCGGCCGCTCGAG - GFP Tag - GTTTAA

Protein Sequence: >MG210456 representing BC034092  
 Red=Cloning site Green=Tags(s)

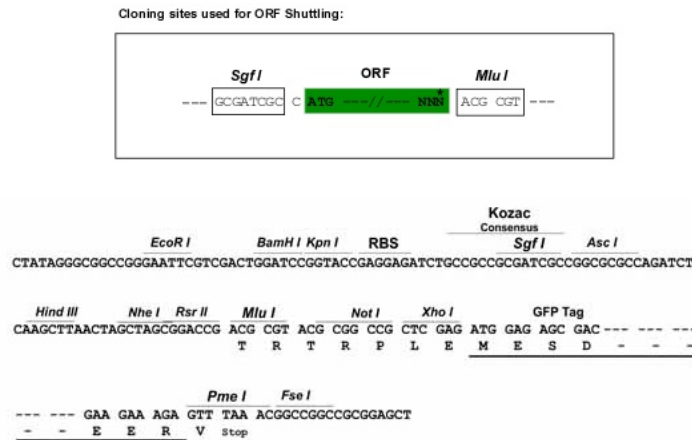
MGRSESQMDITDINAPKPKKKQRWTPLEISLSVLVLLLTIIAVTMIALYATYDDGICKSSDCKIISAARLI  
 QNMDASVEPCTDFFKYACGGWLKRNVIPETSSRYSNFDILRDELEVILKDVLPQPKTEDIVAVQKAKTLY  
 RSCINESAIDSRGGQPLKLLPDIYGWPVASDNWDQTYGTSWTAEKSIAQLNSKYGKKVLINFFVGTDDK  
 NSTQHIHFDQPRLLGPSRDYECTGIYKEACTAYVDFMISVARLIRQEQLPIDENQLSLEMNKVMELE  
 KEIANATTKPEDRNDPMLLYNKMTLAKLQNNFSLLEVNGKSFWSNFTNEIMSTVNINIQNEEVVVYAPE  
 YLTKLKPILTKYSPRDLQNLMSWRFIMDLVSSLRNYKESRNAFRKALYGTTSSETATWRRCANVYVNGME  
 NAVGRLYVEAAFAGESKHVVEDLIAQIREVFIQTLDDL TWMDAETKKAEEKALAIKERIGYPDDIISNE  
 NKLNNEYLELNYREDEYFENIIQNLKFSQSKQLKLRKVDKDEWISGAAYVNAFYSSGRNQIVFPAGIL  
 QPPFFSAQQSNSLNYGGIGMVGHEITHGFDDNGRNFNKDGDLDVWWTQQSANFKDQSQCMVYQYGNFS  
 WDLAGGQHLNGINTLGENIADNGGIGQAYRAYQNYVKKNGEEKLLPGLDLNHNKQLFFLNFAQVWCGTYRP  
 EYAVNSIKTDVHSPGNFRIIGTLQNSAEFADAFHCRKNSYMNPERKCRVW

TRTRPLE - GFP Tag - V

Chromatograms: [https://cdn.origene.com/chromatograms/ja2134\\_c10.zip](https://cdn.origene.com/chromatograms/ja2134_c10.zip)

Restriction Sites: Sgfl-MluI

Cloning Scheme:



ACCN: BC034092

ORF Size: 2250 bp

**OTI Disclaimer:** Due to the inherent nature of this plasmid, standard methods to replicate additional amounts of DNA in E. coli are highly likely to result in mutations and/or rearrangements. Therefore, OriGene does not guarantee the capability to replicate this plasmid DNA. Additional amounts of DNA can be purchased from OriGene with batch-specific, full-sequence verification at a reduced cost. Please contact our customer care team at [custsupport@origene.com](mailto:custsupport@origene.com) or by calling 301.340.3188 option 3 for pricing and delivery.

The molecular sequence of this clone aligns with the gene accession number as a point of reference only. However, individual transcript sequences of the same gene can differ through naturally occurring variations (e.g. polymorphisms), each with its own valid existence. This clone is substantially in agreement with the reference, but a complete review of all prevailing variants is recommended prior to use. [More info](#)

**OTI Annotation:** This clone was engineered to express the complete ORF with an expression tag. Expression varies depending on the nature of the gene.

**Components:** The ORF clone is ion-exchange column purified and shipped in a 2D barcoded Matrix tube containing 10ug of transfection-ready, dried plasmid DNA (reconstitute with 100 ul of water).

**Reconstitution Method:**

1. Centrifuge at 5,000xg for 5min.
2. Carefully open the tube and add 100ul of sterile water to dissolve the DNA.
3. Close the tube and incubate for 10 minutes at room temperature.
4. Briefly vortex the tube and then do a quick spin (less than 5000xg) to concentrate the liquid at the bottom.
5. Store the suspended plasmid at -20°C. The DNA is stable for at least one year from date of shipping when stored at -20°C.

**RefSeq:** [BC034092](#), [AAH34092](#)

**RefSeq Size:** 3623 bp

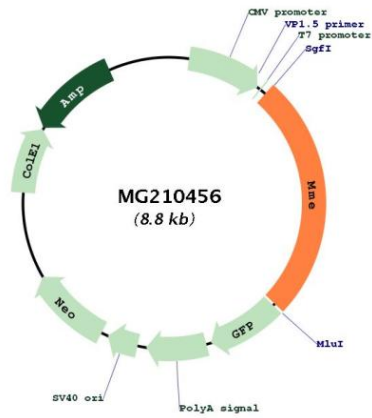
**RefSeq ORF:** 2252 bp

**Locus ID:** 17380

**Cytogenetics:** 3 29.97 cM

**Gene Summary:** Thermolysin-like specificity, but is almost confined on acting on polypeptides of up to 30 amino acids. Biologically important in the destruction of opioid peptides such as Met- and Leu-enkephalins by cleavage of a Gly-Phe bond. Able to cleave angiotensin-1, angiotensin-2 and angiotensin 1-9. Involved in the degradation of atrial natriuretic factor (ANF) (By similarity). Displays UV-inducible elastase activity toward skin preelastic and elastic fibers (PubMed:20876573).[UniProtKB/Swiss-Prot Function]

Product images:



Circular map for MG210456