

Product datasheet for **MG210454**

Med15 (NM_001040683) Mouse Tagged ORF Clone

Product data:

Product Type:	Expression Plasmids
Product Name:	Med15 (NM_001040683) Mouse Tagged ORF Clone
Tag:	TurboGFP
Symbol:	Med15
Synonyms:	A230074L19Rik; AW536074; mPcqap; Pcqap
Mammalian Cell Selection:	Neomycin
Vector:	pCMV6-AC-GFP (PS100010)
E. coli Selection:	Ampicillin (100 ug/mL)



[View online »](#)

ORF Nucleotide
Sequence:

>MG210454 representing NM_001040683
Red=Cloning site Blue=ORF Green=Tags(s)

TTTTGTAATACGACTCACTATAGGGCGGCCGGGAATTCGTGCGACTGGATCCGGTACCGAGGAGATCTGCC
GCC**CGGATCGCC**

ATGGACGTTTCGGGGCAGGAGACCGACTGGCGTAGCGCCGCTTTCGGCAGAAGCTGGTCAGCCAAATTG
AGGATGCCATGAGGAAAGCTGGTGTGGCCACAGTAAATCTAGCAAGGATATGGAGAGTCATGTGTTCTT
GAAGGCCAAGACCCGGGATGAGTATCTTCCCTTGTGGCCGACTCATTATCCATTTCCGAGATATTCAT
AACAGAAGAAATCCCAAGCTTCTGTGACTGACCCCATGAATGCACTGCAGAGCCTTACTGGTGGACCCACCC
CAGGAGCAGCTGGGATTGGCATGCCTCCTCGGGGCCAGGACAGTCCCTGGTGGGATGGTGGCCTTGG
CGTATGGGACAACCACTGCCCTCTCCGGGAACCAACCCCTGGAACCTCTGGAATGGCCCTCATGGC
ATGGCTGTGGTGTCTACAGCACTCCACAGACTCAGCTGCAGTCCAGCAAGTGGCATTGCAGCAACAGC
AGCAGCAGCAACAACAACAGCAATTCAGCAACAGCAGGACGACTGCAGCAACATCAGCAACAGCAGCA
GCAGCAACAGCAGCAACAGCAGTTCAGGCACAACAGAATGCCATGCAGCAACAGTTCCAAGCAGTAGTG
CAGCAGCAGCAGCTTCAGCAGCAGCAGCAGCAGCAGCACCTGATTAAGTTGCATCATCAAAGCCAGCAAC
AACAGATACAACAGCAGCAACTGCAGAGGATGGCAGATTGCAGCTGCAGCAACAGCAACAGCAGCAACA
GCAGCAGGCTTTGCAGGCCAGCCACCAATGCAGCAGCCATCAATGCAGCAGCCACAGCCTCCCCCTTCT
CAGGCCCTACCCAGCAGCTGTACAGCTGCATCATCCACAGCATCACCAGCCACCACCTCAGGCTCAGC
AGTCCCCCATTGCTCAAAACCAACCACCACAGATCCCATCACAGTCACAGAGCCAGCCTTTGGTGTCA
AGCACAAGCCCTTCTGGACCGATGCTGTATGCTGCCAACAGCAGCTGAAATTTGTCCGTGCTCCGATG
GTGGTCCAGCAGCCGCAAGTGCAGCCCCAGGTGCAGCAGGTGCAGCCCCAGGTGCAGCCGAGCAGCAGC
TGCAGGCAGCAGCTGTGCCAGATGGTAGCTCCCGGCTCCAGGTGCAGCCAAAGCAGCCTCACCATGCT
GTCTCACCGTACCAGGCCAGCAGGTGCAGACCCACAGTCGATGCCACCTCCCCACAGCCGTCCCCA
CAACCTGGCTCACAGCCAACTTAATGTCAGCTCCGGCCCTGCCCATCTCCCAGCAGCTTCTGCCTA
GCCCTTACCACAGCCTTCTCAGAGCCAGTGACAGCAGCAGCCACAGAACTTCAGCGTTCCTTCCCC
TGGACCTTTAAACACCCCTGTGAACCCAGCTCTGTATGAGCCAGCTGGCTCTAGCCAGGCTGAGGAG
CAGCAGTACCTGGACAAGCTGAAGCAATTGTCCAAGTACATCGAGCCCTGCGACGCATGATCAACAAGA
TCGACAAGAATGAAGACAGAAAAAGGACTTAAGTAAGATGAAGAGCCTGCTGGACATCCTCACCAGCCC
CTCGAAGAGGTGTCCCCTGAAGACCCTGCAAAAAGTGTGAGATTGCGCTGGAGAAGCTCAAGAATGACATG
GCAGTGCCACACCCCCACCACCCAGTCTTCCAACCAACAGCAGGACCTGTGCCAACCACTCCTAG
ATGCAGTCTGGCAACATCCGTTACCTGTCTTCAACCATTCCTGTACCGCACATTTGTGCCAGCCAT
GATGGCCATCCATGGCCACCTATCGTGTGCCAGTGGTGTGTTCCCGGAAGCGCCGTTTGAGGAGGAT
GAGCGGCAGAGCATACCCAATGTGCTGCAAGGTGAAGTGGCAAGGCTGGATCCCAAGTTCCTGGTGAAT
TGGACCTTCTCACTGCAGCAACAACGGTACTGTCCACCTGATCTGCAAGCTGGATGATAAGGACCTCCC
TAGTGTGCCACCACTGGAGCTCAGTGTGCCTGTGACTACCCTGCCAGAGCCCAATGTGGATCGACCGT
CAGTGGCAATATGATGCCAACCCCTTCTGCAGTCAAGTGCACCGGTGCATGACCTCAAGGCTGTGCAGC
TCCCTGACAAGCACTCGGTACAGCGCTGCTCAACACCTGGGCCAGAGCATCCACCAGGCTGCCTCTC
AGCTGCC

ACGCGTACGCGGCCGCTCGAG – GFP Tag – GTTTAA

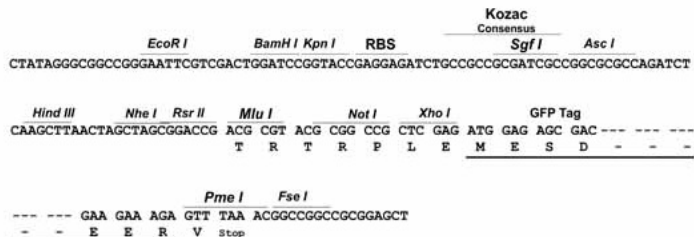
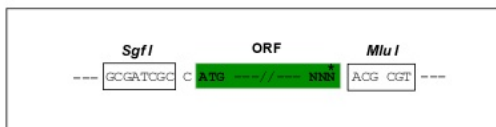
Protein Sequence: >MG210454 representing NM_001040683
 Red=Cloning site Green=Tags(s)

```
MDVSGQETDWRSAAFRQKLVLSQIEDAMRKAGVAHSKSSKDMESHVFLKAKTRDEYLSLVARLI IHFRDIH
NKKSQASVSDPMNAL QSLTGGPTPGAAGIGMPPRGPGQSLGGMGGLGAMGQPLPLSGQPPP GTSGMAPHG
MAVVSTATPQTLQLQQLVQLQQQQQQQQQQFQQQQAALQHQQQQQQQQQQQFQAQQNAMQQQFQAVV
QQQLLQQQQQQQHLIKLHHQSQQQIQQQLQRMAQLQLQQQQQQQQQALQAQPPMQQPSMQQP PPS
QALPQLS QLHHQPPPPQAQQSPIAQNQQPPQIP SQSQSQPLV SQAQALPGPMLYAAQQLKFRAPM
YVQQPQVQVQVQPQVQVQAAVQAAQSAQMVA PGVQVSQSSLTMLS SPSPGQVQVTPQSMPPPPQSP
QPGSQPNSNVSSGPAPSPSSFLPSPSPQSPV TARTPNF SVPSPGPLNTPVNPSSVMS PAGSSQAEE
QQYLDKLKQLSKYIEPLRRMINKIDKNEDRKKDL SKMKSLLDIL TDP SKRCPLKTKQCEIALEKLN DM
AVPTPPPPPVLPTKQDLCOPLLDAVLANIRSPV FNHSLYRTFVPAMMAIHGPPIVSPVVCSRKRRFEE D
ERQ SIPNVLQGEVARLDPKFLVNLDP SHCSNNGTVHLICKLDDKDLPSVPPEL SVPADYPAQSPMWID R
QWQYDANPFLQSVHRCMTSRLQLPDKHSVTAL LNTWAQSIHQACLSAA
```

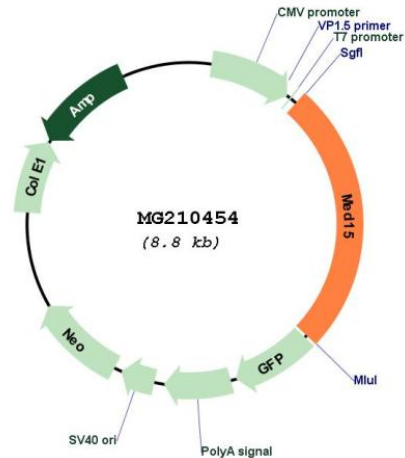
TRTRPLE - GFP Tag - V

Restriction Sites: SgfI-MluI
 Cloning Scheme:

Cloning sites used for ORF Shutting:



Plasmid Map:



ACCN: NM_001040683

ORF Size: 2247 bp

OTI Disclaimer: The molecular sequence of this clone aligns with the gene accession number as a point of reference only. However, individual transcript sequences of the same gene can differ through naturally occurring variations (e.g. polymorphisms), each with its own valid existence. This clone is substantially in agreement with the reference, but a complete review of all prevailing variants is recommended prior to use. [More info](#)

OTI Annotation: This clone was engineered to express the complete ORF with an expression tag. Expression varies depending on the nature of the gene.

Components: The ORF clone is ion-exchange column purified and shipped in a 2D barcoded Matrix tube containing 10ug of transfection-ready, dried plasmid DNA (reconstitute with 100 ul of water).

Reconstitution Method:

1. Centrifuge at 5,000xg for 5min.
2. Carefully open the tube and add 100ul of sterile water to dissolve the DNA.
3. Close the tube and incubate for 10 minutes at room temperature.
4. Briefly vortex the tube and then do a quick spin (less than 5000xg) to concentrate the liquid at the bottom.
5. Store the suspended plasmid at -20°C. The DNA is stable for at least one year from date of shipping when stored at -20°C.

RefSeq: [NM_001040683.1](#), [NP_001035773.1](#)

RefSeq Size: 3263 bp

RefSeq ORF: 2250 bp

Locus ID: 94112

Cytogenetics: 16 10.94 cM

Gene Summary: Component of the Mediator complex, a coactivator involved in the regulated transcription of nearly all RNA polymerase II-dependent genes. Mediator functions as a bridge to convey information from gene-specific regulatory proteins to the basal RNA polymerase II transcription machinery. Mediator is recruited to promoters by direct interactions with regulatory proteins and serves as a scaffold for the assembly of a functional preinitiation complex with RNA polymerase II and the general transcription factors. Required for cholesterol-dependent gene regulation. Positively regulates the Nodal signaling pathway (By similarity).[UniProtKB/Swiss-Prot Function]