

## Product datasheet for **MG210452**

### **Fam129b (NM\_146119) Mouse Tagged ORF Clone**

#### **Product data:**

Product Type:	Expression Plasmids
Product Name:	Fam129b (NM_146119) Mouse Tagged ORF Clone
Tag:	TurboGFP
Symbol:	Fam129b
Synonyms:	9130404D14Rik
Mammalian Cell Selection:	Neomycin
Vector:	pCMV6-AC-GFP (PS100010)
E. coli Selection:	Ampicillin (100 ug/mL)



[View online »](#)

**ORF Nucleotide  
Sequence:**

>MG210452 representing NM\_146119  
 Red=Cloning site Blue=ORF Green=Tags(s)

TTTTGTAATACGACTCACTATAGGGCGGCCGGGAATTCGTCGACTGGATCCGGTACCGAGGAGATCTGCC  
 GCC**CGCATCGC**

ATGGGAGACGTACTGTCCACACACCTGGATGACGCACGGCGCCAGCACATCGCAGAGAAAACCGAGAAGA  
 TCCTCACAGAGTTCCTTCGCTTCTATGAGGACCAAGTATGGTGTCTCCCTTTCAATAGCATGCGCCATGA  
 GATCGAGGGCACCGGCCACCGAGGCACAGCTGCTCTGGCGCAAGGTGCCCCCTGGATGAACGCATCATC  
 TTCTCCGAAACCTTTTCCAGTACCAGGAAGACAATAAGAAGTGGAGAAAACCGCTTCAGCCTGGTGCCCC  
 ATAACATATGGGCTGGTGTATATGAGAACAAAGTGGCCTATGAGCGGCAGATACCAACCCGGGCCGTCAT  
 CAACAGCGCGGGTACAAGGTTCTACCTCTGTCGACCAAGTATCTGGAGCTGGTGGCAATTCCCTGCCA  
 GGGACCACATCGAAATCAGGCTCCACCCCATCCTTAAGTGCCCAACGCAGTTCCCTCTCATCTGTGGC  
 ATCCTTACGCCCACACTATTACTTCTGCATGATGACAGAAGCGGAGCAGGACAAGTGGCAGGCAGTGCT  
 TCAGGATTGCGTTCGACACTGCAACAACGGGATCCCGGAGAACTCAAAGGTGGAGGGCCCTGCATTACA  
 GACGCCATCCGCATGTACCGCCAGTCAAAGGAGCAGTACGGCACCTGGGAAATGCTGTGTGCAACGAGG  
 TGCAGATCCTAAGCAACCTGGTGTGGAGGAGCTGGGCCAGCGCTGAAGGCAGAGCTTGGCCCACGGCT  
 GAAGGGAAAGCCTCAGGAGCGGCAGCGACAGTGGATCCAGATCTCGGACGCTGTGTACCGCTGGTATTT  
 GAACAGGCCAAGGTGCACTTTGAGGACGTGCTGTGTAAGCTGCAGCGGGCCCGGCCGATGGAGGCAG  
 TCATCCGACCGACATGGACAGATCATCACTCCAAGGAGCATCTGGCCAGCAAGATCCGAGCCTTCAT  
 CCTCCCAAGGCGGAGGTGTGCGTGAGGAACCAAGTCCAGCCCTACATCCCATCCATCTTGAGGGCTCTG  
 ATGGTGGCCACCAGCCAGGGCTTCAACGAGGTGCGGATGTCTTCTTCAAAGAGGTACAGAGCATGAATC  
 TGAACGTGATCAACGAGGTGGCATTGACAAGCTGGGCGAGTACATGGAGAAGCTATCCAGCTGGCATA  
 CCACCCCTGAAGATGCAGAGCTGCTATGAGAAGATGGAGCCACTGCGGCTCGACGGGCTGCAGCAGCGA  
 TTCGACGTGTCTAGCACTTCCGTGTTCAAGCAGCGAGCCAGATCCACATGCGAGAGCAAATGGACAATG  
 CTGTGTACACCTTCGAAACCTCCTGCACCAAGAGCTGGGGAAGGGACCCACCAAGGAGGAGCTGTGCAA  
 ATCCATCCAGCGGATTCTAGAGCGCGTGTGAAGAAATACGACTATGACAGCAGTTCTGTGCGCAAGAGA  
 TTCTTCCGAGAGGCGCTGCTGCAGATCACCATTCCCTTCTGCTCAAAAAGCTGGCCCCACCTGCAAGT  
 CGGAGCTGCCACGCTTCCAGGAGCTGATCTTTGAAGACTTGGCAGGTTTCATCCTGGTGGAGAACACGTA  
 CGAGGAGGTGGTGTGCAGACGGTCAAGGACATCCTGCAGGCTGTGAAGGAGGCCGAGTGCAGCGC  
 AAACACAACCTCTACCGTGACAGCATGGTCTGCACAATAGTGACCCCAATCTACACCTGCTGGCTGAGG  
 GCACACCAATCGACTGGGGCGAACAGTACGGTGACAGCGGTGACAGCGCGGTGGTGACAGTGGTGGCAG  
 CCCCTGCCCTCTGAAGCAGCCACCCTCACAGAAAAGCGCAGGCGTGCCAAGCAGGTGATGTCCGTGGTC  
 CAGGACGAGGAGTGGGGCTGCCCTTTGAGGCTGGCGTTGAACCGCCATCACCTGCATCCCCGACAGTG  
 TCACCGAGCTCCGAGGCTGTTGGCCCAGGACCTGCAGGCTGAAAGCTCCCCACGAGCCAGCCCTTCTCT  
 CAATGGGGCTCCAGTCCAAGAGAGCTCCCAACCCGTGGCAGTCCAGAGGCTCACCAGCCAGCCTCACCC  
 CTCCGGCATCTCCACCTGGAAGGCTGTGGACCTTGAAGCCCTAAGCCCAAGTACCAAGAGACCGGAG  
 AGCAGGTGTCTAGCCCCGTAGCCGTCCCCCATCCATACCACCACTGAGGACAGTGGGGAGTGCAGAC  
 GGAGTTC

**ACGCGT**ACGCGGCCGCTCGAG – GFP Tag – GTTTAA

**Protein Sequence:** >MG210452 representing NM\_146119  
 Red=Cloning site Green=Tags(s)

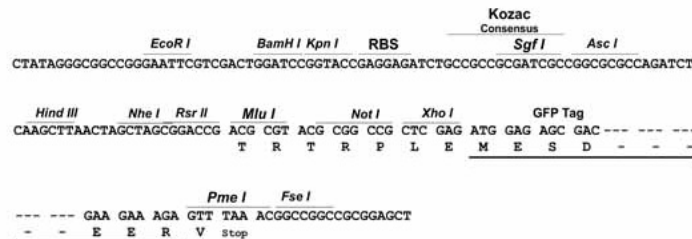
MGDVLSTHLDARRQHIAEKTEKILTEFLRFYEDQYGVSLFNSMRHEIEGTGPPQAQLLWRKVPLDERII  
 FSGNLFQYQEDNKKWRNRFSLVPHNYGLVLYENKVAYERQIPRAVINSAGYKVLTSVDQYLELVGNSLP  
 GTTSKSGSTPILKCPQTQFPLILWHPYARHYFCMMTEAEQDKWQAVLQDCVRHCNNGIPENSKVEGPAFT  
 DAIRMYRQSKEQYGTWEMLCGNEVQILSNLVMEELGPALKAEELGPRLKGPQERQQRQWIQISDAVYRLVF  
 EQAKVHFEDVLCCLQRARPAMEAVIRTDMDQIIITSKEHLASKIRAFILPKAEVCVRNHVQPYIPISILEAL  
 MVPTSQGFTEVRDVFFKEVTDMLNVINEGGIDKLGEYMEKLSQLAYHPLKMQSCYEKMEPLRLDGLQQR  
 FDVSSTSVFKQRAQIHMREQMDNAVYTFETLLHQELGKGPTKEELCKSIQRILERVLLKKYDYDSSSVRKR  
 FFREALLQITIPFLKKLAPTCKSELPRFQELIFEDFARFILVENTYEEVVLQVTMKDILQAVKEAAVQR  
 KHNLYRDSMVLHNSDPNLHLLAEGTPIDWGEQYGDSDSGGDSGGSPCPSEAATLTEKRRRAKQVMSV  
 QDEESGLPFEAGVEPPSPASPDVTELRGLLAQDLQAESSPPASPLNGAPVQESSQPVAVPEASPPASP  
 LRHLPPGKAVDLEPPKPSDQETGEQVSSPSGRPPIHTTTEDSAGVQTEF

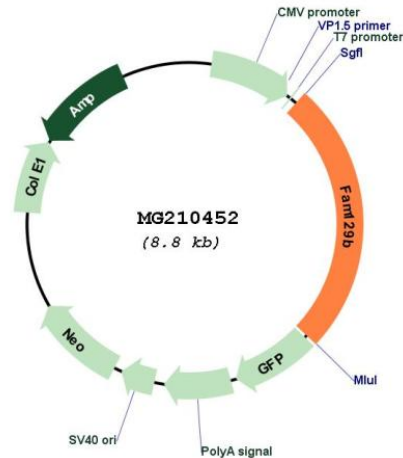
TRTRPLE - GFP Tag - V

**Restriction Sites:** SgfI-MluI

**Cloning Scheme:**

Cloning sites used for ORF Shuttling:



**Plasmid Map:**


**ACCN:** NM\_146119

**ORF Size:** 2247 bp

**OTI Disclaimer:** The molecular sequence of this clone aligns with the gene accession number as a point of reference only. However, individual transcript sequences of the same gene can differ through naturally occurring variations (e.g. polymorphisms), each with its own valid existence. This clone is substantially in agreement with the reference, but a complete review of all prevailing variants is recommended prior to use. [More info](#)

**OTI Annotation:** This clone was engineered to express the complete ORF with an expression tag. Expression varies depending on the nature of the gene.

**Components:** The ORF clone is ion-exchange column purified and shipped in a 2D barcoded Matrix tube containing 10ug of transfection-ready, dried plasmid DNA (reconstitute with 100 ul of water).

**Reconstitution Method:**

1. Centrifuge at 5,000xg for 5min.
2. Carefully open the tube and add 100ul of sterile water to dissolve the DNA.
3. Close the tube and incubate for 10 minutes at room temperature.
4. Briefly vortex the tube and then do a quick spin (less than 5000xg) to concentrate the liquid at the bottom.
5. Store the suspended plasmid at -20°C. The DNA is stable for at least one year from date of shipping when stored at -20°C.

**RefSeq:** [NM\\_146119.2](#)

**RefSeq Size:** 3626 bp

**RefSeq ORF:** 2250 bp

**Locus ID:** 227737

UniProt ID: Q8R1F1

Cytogenetics: 2 B

Gene Summary: May play a role in apoptosis suppression.[UniProtKB/Swiss-Prot Function]