

Product datasheet for **MG210448**

Qsox1 (NM_001024945) Mouse Tagged ORF Clone

Product data:

Product Type:	Expression Plasmids
Product Name:	Qsox1 (NM_001024945) Mouse Tagged ORF Clone
Tag:	TurboGFP
Symbol:	Qsox1
Synonyms:	1300003H02Rik; Qscn6; QSOX; SOx
Mammalian Cell Selection:	Neomycin
Vector:	pCMV6-AC-GFP (PS100010)
E. coli Selection:	Ampicillin (100 ug/mL)



[View online »](#)

ORF Nucleotide Sequence:

>MG210448 representing NM_001024945
 Red=Cloning site Blue=ORF Green=Tags(s)

TTTTGTAATACGACTCACTATAGGGCGGCCGGGAATTCGTCGACTGGATCCGGTACCGAGGAGATCTGCC
 GCC**CGCATCGCC**

ATGAGGAGGTGCGGCCGCTCTCGGGCCGCCATCGCTGCTGCTACTACTGCTGCTGCTCTCGCCTCTGC
 TCTTCTCGGGGCCCGCGCTTACGCGGCCCGGCTCTCAGTGCTCTACTCGTCTCTGACCCGCTGACGCT
 GCTGGATGCTGATTTCGGTGCGTCCCACTGTGCTCGGCTCCAGCAGCGCCTGGGCGGTGGAGTTCTTCGCC
 TCCTGGTGTGGCCACTGCATCGCCTTCGCCCGACGTGGAAGGAGCTTGTAACGACGTGAAAGACTGGA
 GGCCAGCACTCAATCTTGTGTCTGACTGTGCTGAGGAGACCAACAGTGCTGTCTGCAGAGAGTTCAA
 CATCGCTGGCTTCCGACTGTGAGGTTTTTTCAGGCCTTACCAAGAACGGTTCTGGAGCGACACTGCCA
 GGTGCTGGCGCTAATGTGCAGACTCTGCGTATGAGGCTCATCGATGCTCTGGAGTCCCACCGTGACACAT
 GGCCCCAGCCTGTCCACCTCTGGAACCTGCCAAGCTGAATGATATCGACGGATTCTTTACAAGAAATAA
 AGCAGATTACCTGGCCCTGGTCTTTGAAAGGGAAGACTCCTACCTGGGTAGAGAGGTAACCTGGACCTG
 TCCAGTACCATGCTGTGGCAGTGCGCAGGGTCTTGAATACAGAGAGTGACCTGGTGAACAAGTTTGGCG
 TCACTGACTTCCCATCTTGTACCTGCTGCTTCGGAATGGCTCTGTCTCCCGAGTGCCTGTGCTGGTGGG
 GTCCAGGCTTTTCTATACATCCTATCTTCGGGGCTACCTGGACTGACCAGGGATGCTCCCCAACCACA
 GCCACCCAGTCACTGCTGATAAGATAGCACCCACAGTGTGGAAGTTTGCAGACCCTCCAAGATCTACA
 TGGCCGACCTGGAGTCCGCACTCCACTACATCTTGCCTGTAGAAGTGGGGAAGTTCTCAGTGCTGGAGGG
 ACAGCGCTGGTGGCCCTGAAAAAGTTTGTGGCAGTATTGGCCAAGTACTTCCCTGGGCAGCCTTTGGTC
 CAGAATTCTTGCAATCCATAAACGACTGGCTTCAAGCAGCAGAAGAAGAGGATCCCCACAGTTTCT
 TCAAAGCTGCTCTGGACAGCAGGAAGGAGGATGCTGTCTTACTGAGAAGGTGAAGTGGTGGCTGCCA
 GGGCAGTGAGCCACACTTCCGGGGTTTTCCCTGCTCACTGTGGTCTCTTCCACTTCTGACGGTGCAG
 GCAAACCGATATAGTGAGGCCACCCACAGGAACAGCTGATGGCCAGGAGGTCCTCCAAGCCATGAGGA
 GCTATGTTCAAGTCTTCTTTGGCTGTCGTGACTGTGCGGACATTTTGGCAGATGGCTGCAGCGTCCAT
 GCACCAAGTGAGAAGTCCAGTAATGCGATTCTTTGGCTCTGGACTAGCCACAACAGGGTTAACGCTCGC
 CTCTCAGGTGCTCTGAGTGAGGACCCCACTTCCCAAGGTGAGTGGCTCCCCGTGAGCTGTGTTCTG
 CCTGCCATAATGAACTCAACGGACAGGTGCCTTTGTGGGACCTTGGTGCCACCCTCAACTTTCTCAAGGC
 TCACTTCTCCCCAGCAAACATCGTCATAGACTCTTCTGCATCTAGACACACAGGCCGAGAGGGAGTCCA
 GAAGCTACCCCGAGCTGGTAATGGATACATTAAGACTGGAGAGCAGAAATTCAGTGTTGGCCATGAGC
 AGGCTGCTTCTGCAGAGTCCCCTGGAGCCACTGCCCTAGATGTACCAGCTGAGAAGCCTGAAGCAAGTGG
 CCCCCAAGAACTATACAGGCCTCAGAATGGGTGGAGCTTACCAGGGCAGGGCCCTCCTGAGCGCATG
 GAAGACCACCAGAGGGATATGCAGGAGAATGCCCCGGGCAGCAACACTTGGCAAGAGAGACACTGAAG
 CCTATTTCTGCCTGAGGTGAACCACCTCCAAGGCCCTTAGAGCTCAGGCGAGGGGGCCGAGCCCCAA
 GCAACTAGCCCCATACTTGAAGAGGAACCAGAGGCCCTAGCTATACAGGGCCAAGGCCAGTGGCTGCAG
 GTTCTAGGAGGGGGCATTCCCACCTGGACATTAGCCTCTGTGTGGGCTCTACTCCGTGTCCTTCATGG
 GCTTACTGGCCATGTACACCTACTTTCGGGCCAGGCTGAGAACCCTCAAGGGCCATGCTAGTTACCCAC
 AGCC

ACGCGTACGCGGCCGCTCGAG - GFP Tag - GTTTAA

Protein Sequence: >MG210448 representing NM_001024945
 Red=Cloning site Green=Tags(s)

MRRCGRLSGPPSLLLLLLLLSPLLFSGPGAYAARLSVLYSSSDPLTLLDADSVRPTVLGSSSAWAVEFFA
 SWCGHCIAFAPTWKELANDVKDWRPALNLAVLDCAEETNSAVCREFNIAGFPTVRFQAFKNGSGATLP
 GAGANVQTLRMRLIDALESHRDTWPPACPPLEPAKLNIDGFFTRNKADYLALVFEREDSYLGREVTLDL
 SQYHAVAVRRVLNTESDLVNFKFGVTDFFPCYLLLRNGSVSRVPLVESRSFYTSYLRLPGLTRDAPPTT
 ATPVTADKIAPTVWKFADRSKIYMADLESALHYILRVEVGKFSVLEQRLVALKKFVAVLAKYFPGQPLV
 QNFLHSINDWLQKQKKRIPYSFFKAALDSRKEDAVL TEKVNWVGCQGSEPHFRGFP CSLWVLFHFLT VQ
 ANRYSEAHQPQEPADGQEV LQAMRSYVQFFF GCRDCADHFEQMAAASMHQVRSPSNAI LWLWTS HNRV NAR
 LSGAL SEDPHFPKVQWPPRELCSACHNELNQVPLWDLGATLNF LKAHFS PANIVIDSSASRHTGRRGSP
 EATPELVMDTLKLES RNSVLGHEQAAS AEPGATALD VPAEKPEASGPQEL YGLRMGGASPGQPPERM
 EDHQ RDMQENAPGQ QHL SKRDTEALFLPEVNH LQGPLELRRGGRSPKQLAPILEEEPEALAIQGGQWLQ
 VLGGGISHLDISLCVGLYSVSFMGLLAMTYFRARLRTPKGHASYPTA

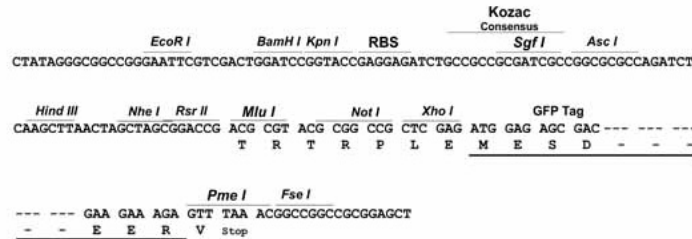
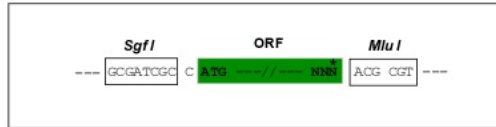
TRTRPLE - GFP Tag - V

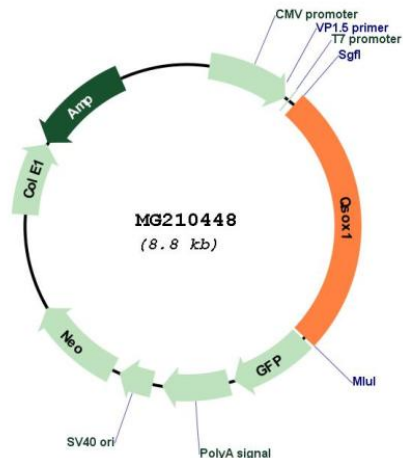
Restriction Sites:

SgfI-MluI

Cloning Scheme:

Cloning sites used for ORF Shutting:



Plasmid Map:


ACCN: NM_001024945

ORF Size: 2244 bp

OTI Disclaimer: The molecular sequence of this clone aligns with the gene accession number as a point of reference only. However, individual transcript sequences of the same gene can differ through naturally occurring variations (e.g. polymorphisms), each with its own valid existence. This clone is substantially in agreement with the reference, but a complete review of all prevailing variants is recommended prior to use. [More info](#)

OTI Annotation: This clone was engineered to express the complete ORF with an expression tag. Expression varies depending on the nature of the gene.

Components: The ORF clone is ion-exchange column purified and shipped in a 2D barcoded Matrix tube containing 10ug of transfection-ready, dried plasmid DNA (reconstitute with 100 ul of water).

Reconstitution Method:

1. Centrifuge at 5,000xg for 5min.
2. Carefully open the tube and add 100ul of sterile water to dissolve the DNA.
3. Close the tube and incubate for 10 minutes at room temperature.
4. Briefly vortex the tube and then do a quick spin (less than 5000xg) to concentrate the liquid at the bottom.
5. Store the suspended plasmid at -20°C. The DNA is stable for at least one year from date of shipping when stored at -20°C.

RefSeq: [NM_001024945.1](#), [NP_001020116.1](#)

RefSeq Size: 3399 bp

RefSeq ORF: 2247 bp

Locus ID: 104009

UniProt ID: [Q8BND5](#)

Cytogenetics: 1 G3

Gene Summary: Catalyzes the oxidation of sulfhydryl groups in peptide and protein thiols to disulfides with the reduction of oxygen to hydrogen peroxide (PubMed:26819240). Plays a role in disulfide bond formation in a variety of extracellular proteins (PubMed:26819240). In fibroblasts, required for normal incorporation of laminin into the extracellular matrix, and thereby for normal cell-cell adhesion and cell migration (PubMed:26819240).[UniProtKB/Swiss-Prot Function]