

Product datasheet for **MG210446**

Snrk (NM_133741) Mouse Tagged ORF Clone

Product data:

Product Type:	Expression Plasmids
Product Name:	Snrk (NM_133741) Mouse Tagged ORF Clone
Tag:	TurboGFP
Symbol:	Snrk
Synonyms:	2010012F07Rik; AI448042; AW547029; E030034B15; mKIAA0096; R74830
Mammalian Cell Selection:	Neomycin
Vector:	pCMV6-AC-GFP (PS100010)
E. coli Selection:	Ampicillin (100 ug/mL)



[View online »](#)

ORF Nucleotide Sequence:

>MG210446 representing NM_133741
 Red=Cloning site Blue=ORF Green=Tags(s)

TTTTGTAATACGACTCACTATAGGGCGGCCGGGAATTCGTCGACTGGATCCGGTACCGAGGAGATCTGCC
 GCC**CGGATCGCC**

ATGGCAGGGTTCAAGCGAGGATATGATGGGAAAATTGCTGGATTATATGATCTGGATAAAACCTTGGGTC
 GAGGTCATTTTGCAGTGGTCAAACCTTGCCAGGCATGTCTTACAGGTGAGAAGGTGGCAGTGAAAGTCAT
 TGACAAGACGAAGCTGGACACTCTAGCCACTGGTCATCTTCCAGGAAGTGAGGTGCATGAAACTAGTG
 CAGCACCCCAACATTGTGCGTCTCTATGAAGTCATAGACACCCAGACCAAACCTTTATCTCATTCTAGAAC
 TTGGAGATGGAGGAGATATGTTTGATTATAATGAAGCACGAGGAGGGTCTTAATGAAGACTTGGCCAA
 GAAGTACTTTGCTCAGATAGTTCATGCTATATCTTATTGCCATAAACTCCATGTGGTCCACAGAGACTTG
 AAACCAGAGAATGTAGTCTTTTTGAAAAACAAGGTCTTGTGAAGTTGACAGACTTTGGCTTCAGCAACA
 AATTTTCAGCCTGGAAAGAACTACCACGAGCTGCGGGTCTCTTGCACTCTGCTCCAGAAATCCTGCT
 TGGCGATGAGTACGATGCCCTGCAGTAGACATATGGAGCCTGGGCGTGATCCTTTTCATGCTGGTGTGT
 GGGCAGCCACCCTTCCAAGAAGCCAACGACAGCGAGACACTGACCATGATCATGGACTGCAAGTACACGG
 TGCCACCCCGCGTGTCTGCAGGGTGCAGGGACCTGATCACACGAATGCTACAGAGAGACCCAAAAGGAG
 AGCCTCTCTGGAAGAGATTGAAAGCCACCCTTGGCTCCAGGGAGTGGACCCATCACCAGCCACCAAGTAT
 AACATTTCCCTCGTGTCTACAAGAACCTCTCCGAGGAAGAGCACAACAGCATCATCCAGCGCATGGTGC
 TCGGGGACATCGCGGACCAGACGCCATCGTAGAAGCCCTGGAACCAACAGGTACAACCACATTACCGC
 CACTTACTTTTTACTTGTGAAAGGATCCTGAGAGAAAAGCAAGAGAAAGAAATACAGACCAGGTCTGCT
 AGCCCCAGCAACATCAAGGCCAGTTTAGGCAGTCATGGCCAACCAAAATTTGATGTACCCCAAGACCTTG
 AAGATGATCTCACTGCCACCCTCTGTACATGCCACAGTCCCAGTCTCCTGCTAGGGCTGGTGACAA
 TGTCTCAATGGCCACAGGAGCAAAGGCCGTGTGTGACCCAGCCAAGAAAGATGAGCTCCCGGAGCTGGCT
 GGGCCGGCACTGTCCACTGTTCCACCTGAAGCATGAAGCCCGCAGCCAGTGGGCGCAAGTGTCTTTCA
 GGGTGAAGAAGATGAGGAGGAGGATGAGGAGGACAAGAAGCCTGTGTCCCTGTCCACGCAGGTGGTGTCT
 GCGCCGGAAGCCATCGGTACCAATCGCCTGACGTCTCGCAAGAGTGCCCAAGTGTCAACCAGATCTTC
 GAGGAGGGCGAGTCAGACGACGAGTTTGACATGGACGAGAACCTGCCGCCAAGCTGAGCCGGCTGAAGA
 TGAACATTGCCTCACCAGGCACAGTGCACAAGCGCTACCACCGCAGGAAAAGCCAGGGCCGGGGCTCTAG
 CTGACGACGCTCTGAGACCAGCGATGACGACTCCGAGAGCCGGCGGAGGCTGGACAAGGACAGCGGCTTT
 GCTTACTCGTGGCACCGCGTGACAGCAGTGGGGGCCACCAGGCAGCGAGGGCGATGGTGGCGCCAGA
 GCAAGCCTAGCAGCGGTGGCGGTGTGGACAAGGCCAGCCGGGTGAGCAGGGCACGGGTGGTGGCAGCCA
 GGGAGGCTCTGGTGGGACCCCGTCCGGTACAGCAGGGTCTCAAGGCGCTGTGCAGGCCCTGACTCATCC
 TCACCCTCCCCCGCTCAGCCTCTGCCGCTCCACGTGGTGCAGAGCTTGTGCAGAGCCTCAAACCTCGTGA
 GCCTGTGCTAGGCTCACAGCTGCATGGCGCAAGTACATTCTGGACCCGAGAAAGGCTTGTCTCCAG
 CGTGAAGGTGCAGGAGAAGTCCACGTGGAAGATGTGCATCAGCGCCCCAGGCCCCAGCCCTCTGCTGAC
 CTTGACCCGGTGAGGACCAAGAAGCTGAGGAACAACGCGCTCCAGCTACCTCTGTGCGAAAAGACCATCT
 CCGTGAACATCCAGCGCAGCCGAAGGAAGGGTGTCTGCGCCTCCAGCCCCCAGCTGCTGCCATGT
 CATC

ACGCGTACGCGGCCGCTCGAG - GFP Tag - GTTTAA

Protein Sequence: >MG210446 representing NM_133741
 Red=Cloning site Green=Tags(s)

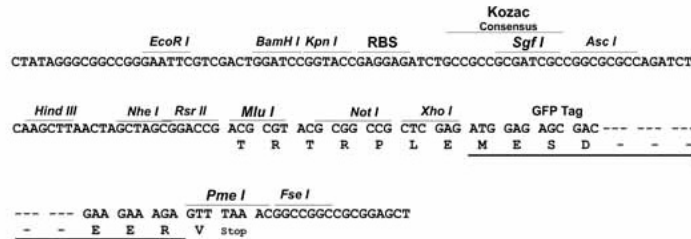
MAGFKRGYDGK IAGLYDLDKTLGRGHFAVVKLARHVFTGEKVAVKVIDKTKLDLTLATGHLFQEVRCMKLV
 QHPNIVRLYEVIDTQTKLYLILELGDGDMFDYIMKHEEGLNEDLAKKYFAQIVHAISYCHKLHVVRDL
 KPENVVFFEKQGLVKLTDFGFSNKFQPGKLLTSCGSLAYSAP EILLGDEYDAPAVDIWSLGVILFMLVC
 GQPPFQEANDSETLTMIMDCKYTVPPRVSAGCRDLITRMLQRDPKRRASLEEIESHPWLQGVDPSPATKY
 NIPLVSYKNLSEEEHNSIIQRMVLGDIADRDAIVEALETNRYNHITATYFLLAERILREKQEKEIQTRSA
 SPSNIKAQFRQSWPTKIDVPQDLEDDL TATPLSHATVPQSPARAGDNVNLNGHRSGKLC DPAKKDELPELA
 GPALSTVPPASMKPAASGRKCLFRVEEDEEEDEEDKPKVSLSTQVVLRRKPSVTNRLTSRKSAPVLNQIF
 EEGESDDEFDMDENLPPKLSRLKMNIASPGTVHKRYHRRKSQGRGSSCSSSETSDDDSESRRRLDKDSGF
 AYSWHRDSSEGGPPGSEGDGGGQSKPSSGGGVDKASPGEQGTGGGSQGGSGGTPSGTAGSSRRCAGPDSS
 SPSPASASAAPRGAELVQSLKLVSLCLGSQLHGAKYILDPOKALFSSVKVQEKSTWKMCISAPGSPSAD
 LDPVRTKLRNNALQLPLCEKTI SVNIQRSRKEGLLCASSPASCCHVI

TRTRPLE - GFP Tag - V

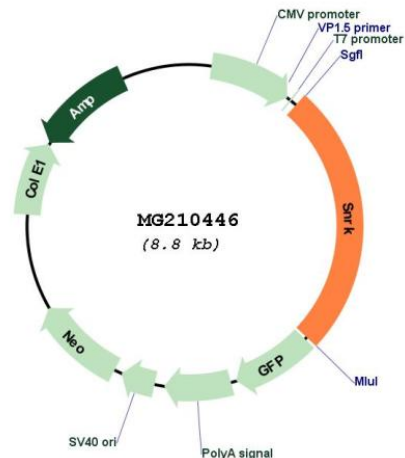
Restriction Sites: SgfI-MluI

Cloning Scheme:

Cloning sites used for ORF Shutting:



Plasmid Map:



ACCN: NM_133741

ORF Size: 4857 bp

OTI Disclaimer: The molecular sequence of this clone aligns with the gene accession number as a point of reference only. However, individual transcript sequences of the same gene can differ through naturally occurring variations (e.g. polymorphisms), each with its own valid existence. This clone is substantially in agreement with the reference, but a complete review of all prevailing variants is recommended prior to use. [More info](#)

OTI Annotation: This clone was engineered to express the complete ORF with an expression tag. Expression varies depending on the nature of the gene.

Components: The ORF clone is ion-exchange column purified and shipped in a 2D barcoded Matrix tube containing 10ug of transfection-ready, dried plasmid DNA (reconstitute with 100 ul of water).

Reconstitution Method:

1. Centrifuge at 5,000xg for 5min.
2. Carefully open the tube and add 100ul of sterile water to dissolve the DNA.
3. Close the tube and incubate for 10 minutes at room temperature.
4. Briefly vortex the tube and then do a quick spin (less than 5000xg) to concentrate the liquid at the bottom.
5. Store the suspended plasmid at -20°C. The DNA is stable for at least one year from date of shipping when stored at -20°C.

RefSeq: [NM_133741.2](#), [NP_598502.2](#)

RefSeq Size: 4708 bp

RefSeq ORF: 2247 bp

Locus ID: 20623

UniProt ID: [Q8VDU5](#)

Cytogenetics: 9 F4

Gene Summary: May play a role in hematopoietic cell proliferation or differentiation. Potential mediator of neuronal apoptosis (By similarity).[UniProtKB/Swiss-Prot Function]