

Product datasheet for **MG210442**

Phtf2 (NM_172992) Mouse Tagged ORF Clone

Product data:

Product Type:	Expression Plasmids
Product Name:	Phtf2 (NM_172992) Mouse Tagged ORF Clone
Tag:	TurboGFP
Symbol:	Phtf2
Synonyms:	1110054G21Rik; 9530062N20Rik; AI447096; C77923
Mammalian Cell Selection:	Neomycin
Vector:	pCMV6-AC-GFP (PS100010)
E. coli Selection:	Ampicillin (100 ug/mL)



[View online »](#)

ORF Nucleotide Sequence:

>MG210442 representing NM_172992
 Red=Cloning site Blue=ORF Green=Tags(s)

TTTTGTAATACGACTCACTATAGGGCGGCCGGGAATTCGTCGACTGGATCCGGTACCGAGGAGATCTGCC
 GCC**CGGATCGCC**

ATGGCGTCCAGAGTCACAGATGCTATAGTCTGGTATCAGAAGAAGATTGGAGCCTATGATCAACAAATAT
 GGGAAAAGTCTGTTGAACAAAGAGAAATCAAGGGCTTAAGGAATAAACCAAAGAAAACAGCACATGTGAA
 ACCAGACCTCATCGATGTTGATCTTGTGAGAGGGTCTGCATTTGCTAAGGCAAAGCCTGAAAAGTCTTGG
 ACTTCTCTGACAAGGAAAGGGATTGTTGAGTGTCTTTTTCCCTTTCTTCTCCCGCTGGTGGTTACAAG
 TAACGTCCAGAGTCATCTTCTCCTGGCTTCTTGTCTCTATCTTCTCCAAGTTGTGCAATAGTATTATT
 CTGTTCCGCTCCTAGCCACATAGCATACTCTAACTGAAGTGATTGGGCCAATATGGCTGATGCTGCTT
 TTGGGAACCGTGCATTGCCAGATTGTTTCAACAAGAACACCCAAGCCTCCACTAGGCACAGGCGGTAAAC
 GAAGAAGGAAATTAAGAAAAGCAGCCCATTTGGAAGTCCACAGGGAAGGGGACGGTTCTAGCACCACAGA
 TAACACACAGGAGGGAGCGGTGCAGAGCCAGGCGCAGGCGCCCTTACAGTGTTGGCAGTGTCTTACA
 GACCTTTGGCTTGTCTTTCTTATCAGGGTCAAAGAAGGCAAAGAATTCATTGATAAGTCAACCCG
 AGACTGACAATGGCTATGTGTCCCTCGATGGGAAGAGGACTGTAAAAAGCAGTGAGGATGGAGCACAGTA
 CCATGAGCCTCAGTGTGAACTGTTGGACCAGAAGACGCAGCCTGGGCCACACGAACGCCAAGGAGTGT
 CCTGCCAAAGATACCAAAGAAAGATAACAAATGTCTCTGATGAAGTATCCAGTGAGGAGGGTCCCGAAA
 CAGGATACCCATTGCGTGGTCAATGTGGACAGAACTTCTGAAAGCGGTCTTCGAAATAGAAAGCCACACCA
 TTATAAAAAGCATTATGCAAATGAGGATGCCCTAAATCGGGTACTAGTTGCAGCTCTCGCTGTTCAAGT
 TCCAGACAGGATTCTGAGAGCACAAGGCCAGAATCTGAAACCGAAGATGTATTATGGGAAGACTTGTAC
 ACTGTGCGGAATGCCGCTCATCTTGTACCAGTGAGACAGATGTGGGAAACCCTCAGATAAATCCATGTGG
 GAAGAAAAGAAATAGAGACGACCCTTTTTCATCAGAGTCATTTGCCCTGGCTTCATAGTTCCACCCAGGA
 TTAGAAAAATCAGTGCTATAGTGTGGGAAGGTAACTGTAAGAAAAGCAGACATGTCTGTACTTGAAA
 TCAGTGGGATGATAATGAACAGAGTGAACAACCATGTCCCAGGCATAGGATACCAGGATTTTGAAATGC
 CATCTCTAATCCTGGGCTTGACCCCATTTGTTTTCCGACTGTCACAAGCAACAGACTTGGAGCAGCTC
 ACAGCCCATCTGCGTCAGAACTTTATGTGATTGCGTTTGGCTTAACGAAGATGTCATGGTTCTTTCTA
 TGGTCTGATAAGTTTTGTGGTTCGAGTCTCTTGTGTGGATCTCTTTTTTTTGTGTGTGTAGCAGA
 AAGAACATATAAGCAACGATTACTTTTTGCAAACTCTTTGGACACTTGACGTCTGCAAGGAGAGCTCGC
 AAATCTGAGGTTCCGCATTTCCGGTTGAAGAAAGTACAGAATATAAAAATGTGGCTGTCTCTGCGTTCCT
 ATCTTAAGCGCCGAGGCCCTCAGCGATCTGTGGATGTCATTGTCTCATCGGCCTTCTTACTGACAACTCTC
 AGTTGTGTTTATCTGCTGTGCACAGCTGCTCCACGTGCACGAGATCTTCCTTGACTGTCACTATAACTGG
 GAGCTGGTGTCTGGTGCATCTCCTTAACGCTGTTCTCCTGAGGTTCTGTTACTCTTGGATCAGAAACCA
 GCAAGAAATACAGCAATACCTCAATCCTACTTACGGAACAGATAAACCTCTACTTGAAAATGGAGAAGAA
 ACCTAACAAAAAGGAGGAGCTGACCCTTGTGAATAATGTGTTAAAGCTGGCTACGAAACTGCTGAAGGAA
 TTGGACAGTCCCTTTAGGTTGTATGGACTTACAATGAATCCGCTGCTGTAAACATCACCCAGGTTGTCA
 TCCTTTCCGCTGTTTCCGGTGTATCAGTACTGCTTGGATTAATTTAAAGCTGTGGAAGATCAATC
 G

ACGCGTACGCGGCCGCTCGAG - GFP Tag - GTTTAA

Protein Sequence: >MG210442 representing NM_172992
 Red=Cloning site Green=Tags(s)

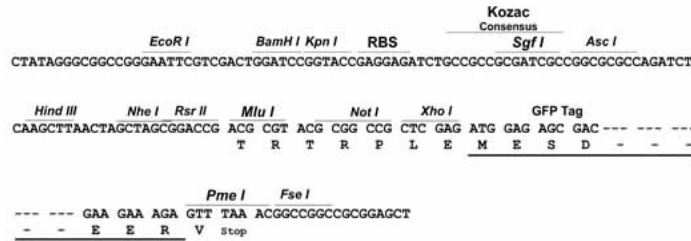
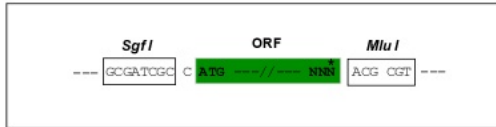
MASRVTD AIVWYQKKIGAYDQQIWEKSVEQREIKGLRNKPKKTAHVKPDLDVLDVLRGSAFAKAKPESPW
 TSLTRKGI VRVVFPPFFSRWWLQVTSRVIFSWLLVLYLLQVA AIVLFC SAPSPHSIPLTEVIGPIWMLL
 LGTVHCQIVSTRTPKPLGTGGKRRRKLKAAHLEVHREGDGSSTTDNTQEGAVQSHGAGAPYSVGTVFR
 DLWLA AFFL SGSKKAKNSIDKSTETDNGYVSLDGKRTVK SSE DGAQYHEPQCETVGPEDA AWATRTPRSV
 PAKDTQRKITNV SDEV S E EGPETGYPLRGHVDR TSEGLRNRKPHHYKKHYANEDAPKSGTSCSSRCSS
 SRQDSESTRPESETEDVLWEDLLHCAECRSCTSETDVGNPQINPCGKKEYRDDPFHQSHLPWLHSSHPG
 LEKISAI VWEGNDCKKADMSVLEISGMIMNRVNNHVP GIGYQVFN AISLILGLTPFVFRLSQATDLEQL
 TAHSASELYVIAFGSNEDVMVLSMVLISFVVRVSLVWIFFLLCVAERTYKQRLLF AKLFGHLTSARRAR
 KSEVPHFRLKKVQNIKMWLSLSYLKRRGPQRSVDVIVSSAFLLTISVVFICCAQLLHVHEIFLDCHYNW
 ELVIWCISLTLFLLRFVTLGSETSKKYSNTSILLTEQINLYLMEKKPNKKEELTLVNNVLKLATKLLKE
 LDSPFRLYGLTMNPLLYNITQVVILSAVSGVISDLLGFNLKLWKIKS

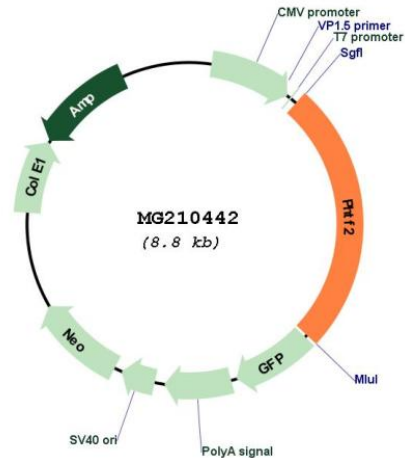
TRTRPLE - GFP Tag - V

Restriction Sites: SgfI-MluI

Cloning Scheme:

Cloning sites used for ORF Shutting:



Plasmid Map:


ACCN: NM_172992

ORF Size: 2241 bp

OTI Disclaimer: The molecular sequence of this clone aligns with the gene accession number as a point of reference only. However, individual transcript sequences of the same gene can differ through naturally occurring variations (e.g. polymorphisms), each with its own valid existence. This clone is substantially in agreement with the reference, but a complete review of all prevailing variants is recommended prior to use. [More info](#)

OTI Annotation: This clone was engineered to express the complete ORF with an expression tag. Expression varies depending on the nature of the gene.

Components: The ORF clone is ion-exchange column purified and shipped in a 2D barcoded Matrix tube containing 10ug of transfection-ready, dried plasmid DNA (reconstitute with 100 ul of water).

Reconstitution Method:

1. Centrifuge at 5,000xg for 5min.
2. Carefully open the tube and add 100ul of sterile water to dissolve the DNA.
3. Close the tube and incubate for 10 minutes at room temperature.
4. Briefly vortex the tube and then do a quick spin (less than 5000xg) to concentrate the liquid at the bottom.
5. Store the suspended plasmid at -20°C. The DNA is stable for at least one year from date of shipping when stored at -20°C.

RefSeq: [NM_172992.3](#), [NP_766580.3](#)

RefSeq Size: 4839 bp

RefSeq ORF: 2244 bp

Locus ID: 68770

UniProt ID: [Q8CB19](#)

Cytogenetics: 5 A3

Gene Summary: May play a role in transcription regulation.[UniProtKB/Swiss-Prot Function]