

## Product datasheet for **MG210439**

### **Noc2l (BC020013) Mouse Tagged ORF Clone**

#### **Product data:**

Product Type:	Expression Plasmids
Product Name:	Noc2l (BC020013) Mouse Tagged ORF Clone
Tag:	TurboGFP
Symbol:	Noc2l
Synonyms:	AA410003; AF155546; NIR
Mammalian Cell Selection:	Neomycin
Vector:	pCMV6-AC-GFP (PS100010)
E. coli Selection:	Ampicillin (100 ug/mL)



[View online »](#)

**ORF Nucleotide Sequence:**

>MG210439 representing BC020013  
 Red=Cloning site Blue=ORF Green=Tags(s)

TTTTGTAATACGACTCACTATAGGGCGGCCGGAATTCGTCGACTGGATCCGGTACCGAGGAGATCTGCC  
 GCC**CGGATCGCC**

ATGGCTGCGTCTCGCGCTCCCCGAGGCGCCTGGAGGACCTCAGTGTGGACGAGTTCCTGGCTTCCGGCT  
 TCGAGTCCGGATCCGAGTCGGAGCTGGAGGGCGCCGCGGAGGAGCGCAGGGCGCAGGAGCCGCTGGAA  
 CCGGGAGCGGGGCGCGCACCTCCCCGGGCCCGCGGACGCTGCGTAAGGGCCGCGCCTCTGAG  
 CACAAAGACCAGCTCTCTCGGCTGAAGGACAGAGACCCCGAGTTCTACAAGTTCCTGCAGGAGAATGACC  
 GGAGCCTACTGGACTTCAGTGACTCGGACAGCTCTGCGGAGGAAGAGGAGCCATTCCACTCCCTGCCAGA  
 CACGCTGGAGGAAGCAAGCGAAACAGAGGAAGATGGAGGAGAGGACAGTACGCGTTGCCAGAGGGCTG  
 CGGAGCAAGAAGAATGAGCCTGTACCCGTGACCCTCGCCATGGTGGAAAGGTGGAGGCAGGGCTCCAGGC  
 ACCACCTTACTCCAGGCTGTTCCATGAAGTTGTACAGGCGTCCGAGCAGCTGTAGCCACCACCAAGG  
 AGAGCAGGAAGCTGCTGAGACTTCAGGTTCCAGTTCGAGATAGTGTGTGTTCAATGCTCTGGTACT  
 TTCTGCATTGAGACCTCTGTGGTTGCCTTCAGAAAGCTGCTGTTGGAAAAGACACCAAAGGATAGCAATA  
 GGCTGCTGCTGCCATCCAGTAGCCCACTGTGGGGAAAGCTCCGTGTGGATGTCAAGTCATACCTAAGTGC  
 GGTGTGACAGCTGGCAGCCTGTCTAGCGGAAGCCACAGTGTCTGCAGCTGTCTGACGATATCAGCAGC  
 TTGGTTCCCTTACTTCTGACTTTCCCGAAGCAGTGCCGAATGCTGCTCAAGAGGATGGTGGTTCTGTGGA  
 GCACGGGCGAAGAGTCTCTGCGGGTCTGGCCTTCTGGTACTCATCAGAGTCTGTGCGCACAAAGAGGA  
 AGCCTTCCCTTGGTCCCATTCTGAAGCAAATGTACATCATGTATGTGAGAACTGCAAGTTCACCTCCCC  
 AGTACCCTCCCCCTATAAGCTTCATGCAGCGGACACTGACTGAAATGCTTGCCTGGACCCAGCGTCT  
 CCTATCAGCAGCCTTCCCTACATCCGCCAGCTTCCGTCACCTGCGGAATGCTATGACCACAGGCAA  
 GAAGGAGACACACCAAGTCTGTGTACAACCTGGCAGTATGTGCACTGCCTCTACCTGTGGTGTGAGTCTG  
 AGTACCCTTGGTTCAGTGAGATCCTGCAGCCCTACTCTACCCTCTCTCCAGATCATATTGGCTGTA  
 TCAAGTTGTTGCCCACTGCTCGATTTTATCCATTGCGCATGCATTGTGTACGTGCCCTGACACTGCTGTC  
 CCAGACCATCGGCACCTTATACCTGTCTGCCCTTATTCTCGAGATTTTCCAGCAGGTGGACTTCAAT  
 AGGCGGCCAGGTGCGATGAGCTCCAAGCCCATCAACTTCTGTGATCTTGAAGTGTCCAGCACCAACC  
 TGCAGGAGAAGGCGTACCGGGACGGCTGCTGGAACAGCTGTGTGACCTTATTCTGGAATACCTGCACAG  
 CCAGGCCACAGCATCGCTTTCCAGAGTTGGTGTGCTACTGTTCTACAGCTGAAATCTTTTCTCCGG  
 GAGTGCAAAGTGGCCAATACTGCGGCGAGGTGCGGCAGCTGCTGGAGAAAGTGAAGAGAATGCACGGC  
 ACATCGAAAGCCTTCGACAGAGCGGACCTTCAGCGTGTCTGACCGGACGGCAGTGGATGCGTGGGAGAA  
 GCAGGTTGCTGAAGAGGGGACCCCACTCACAGATACTACGGCCACTGGAAGAAGCTGAGGGACCGTGAG  
 ATCCAGCTGGAATCAGTGGCAAAGAGCGGCTAGAAGACCTGAACTTCCCAGAGATCAAAAGGCGGAAGG  
 TGGAAGACAGGAAGGATGAAGACAGGAAAGAATTAAGGACCTGTTTGGTGGACAGTCTGAGGGCGA  
 GGACAGCACCGACTTCTTTGAGAGAGGAGTACCTAGGCTCCCGGAAGCTCACCAAGGACTGAAAGAAGAT  
 CAGGAAGAAGAAGATAAAGAAGAAGGTGACAGCGATTAGAGGATGGAGACACAGACACGGGAGTGGATC  
 TGAGCGAACTGTGGCAGCTGGCTCAGGGAGCACAAAGATGAGCTGGAGGATCTTCAGCTCTCAGAAGAGGA  
 C

AG**CGGACCC**ACGCGTACGCGGCCGCTCGAG - GFP Tag - GTTTAA

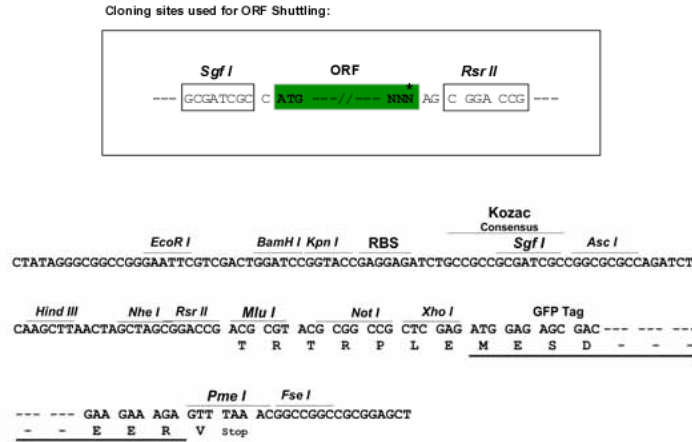
**Protein Sequence:** >MG210439 representing BC020013  
 Red=Cloning site Green=Tags(s)

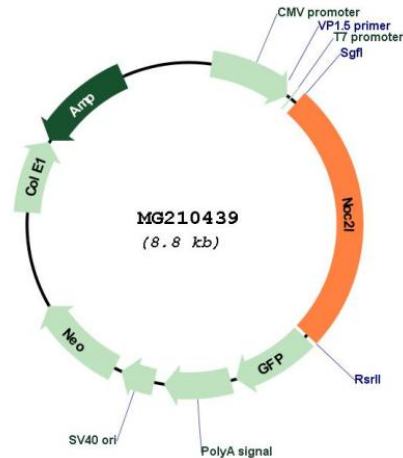
MAASRAPRRRLEDLSVDEFLASGFESGSESELEGAAEERRARGAAWNRRRRGARTSPGPAGRLRKGRASE  
 HKDQLSRLKDRDPEFYKFLQENDRSLDFSDSDSSAESEEPFHSLPDTLEEASETEEDGGEDSDALPRGL  
 RSKKNPEVPVTLAMVERWRQGSRHHLTPRLFHEVVQAFRAAVATTQGEQEAETCRFQVADSAVFNALVT  
 FCIRDLGCLQKLLFGKTPKDSNRLLLPSSSPLWGKLRVDVKSYLSAVVQLAACLAETVSAAVLQHISS  
 LVPYFLTFPKQCRMLLKRMVVLWSTGEESLRVLAFVLIRVCRHKKEAFLGPILKQMYIMYVRNCKFTSP  
 STLPLISFMQRTLTEMLALDPSVSYQHAFLYIRQLAVHLRNAMTTGKKETHQSVYNWQYVHCLYLWCRVL  
 STLGSSEILQPLLYPLSQIIGCIKLLPTARFYPLRMHCVRALTLLSQTIGTFIPVLPFILEIFQQVDFN  
 RRPGRMSSKPINFSVILKLSSTNLQEKAYRDGLLEQLCDLILEYLHSAHSIAFPELVLPVTLQLKSFLR  
 ECKVANYCRQVRQLEKQVENARHIESLRQSATFSVSDRTAVDAWEKQVREEGTPLTRYYGHWKKLRDRE  
 IQLEISGKERLEDLNFPEIKRRKVEDRKDEDRKELKDLFELDSSEGEDSTDFFERGVPRLPEAHQGLKED  
 QEEEDKEEGSDSEGDGTDGVDLSELWQLAQGAQDELEDLQLSEED

SGPTRRRLE - GFP Tag - V

**Restriction Sites:** SgfI-RsrII

**Cloning Scheme:**



**Plasmid Map:**


**ACCN:** BC020013

**ORF Size:** 2241 bp

**OTI Disclaimer:** The molecular sequence of this clone aligns with the gene accession number as a point of reference only. However, individual transcript sequences of the same gene can differ through naturally occurring variations (e.g. polymorphisms), each with its own valid existence. This clone is substantially in agreement with the reference, but a complete review of all prevailing variants is recommended prior to use. [More info](#)

**OTI Annotation:** This clone was engineered to express the complete ORF with an expression tag. Expression varies depending on the nature of the gene.

**Components:** The ORF clone is ion-exchange column purified and shipped in a 2D barcoded Matrix tube containing 10ug of transfection-ready, dried plasmid DNA (reconstitute with 100 ul of water).

**Reconstitution Method:**

1. Centrifuge at 5,000xg for 5min.
2. Carefully open the tube and add 100ul of sterile water to dissolve the DNA.
3. Close the tube and incubate for 10 minutes at room temperature.
4. Briefly vortex the tube and then do a quick spin (less than 5000xg) to concentrate the liquid at the bottom.
5. Store the suspended plasmid at -20°C. The DNA is stable for at least one year from date of shipping when stored at -20°C.

**RefSeq:** [BC020013.1](#)

**RefSeq Size:** 2565 bp

**RefSeq ORF:** 2243 bp

**Locus ID:** 57741

Cytogenetics: 4 E2