

## Product datasheet for **MG210404**

### Tmem2 (BC019745) Mouse Tagged ORF Clone

#### Product data:

Product Type:	Expression Plasmids
Product Name:	Tmem2 (BC019745) Mouse Tagged ORF Clone
Tag:	TurboGFP
Symbol:	Tmem2
Mammalian Cell Selection:	Neomycin
Vector:	pCMV6-AC-GFP (PS100010)
E. coli Selection:	Ampicillin (100 ug/mL)



[View online »](#)

**ORF Nucleotide Sequence:**

>MG210404 representing BC019745  
 Red=Cloning site Blue=ORF Green=Tags(s)

TTTTGTAATACGACTCACTATAGGGCGGCCGGGAATTCGTCGACTGGATCCGGTACCGAGGAGATCTGCC  
 GCC**GCGATCGCC**

ATGCGTGTAGGAGTGTGGAACTACGTCCTGTGCCTACCACAGATTGCATGGCTGTTTCAACTTTCT  
 GGATTGCCACCCCAACAACCACCTGATCAATAACGCAGCTGCAGGCTCACAGGATGCTGGAATATGGTA  
 TTTATTCCACAAGGAACCAACTGGGGAGTCCAGTGGGCTGCAGCTCCTGGAGAAGCCAGAACTCACTCCG  
 CTGGGGATATTTTATAACAACAGGGTTCATTCAAATTTAAGGCTGGTTATTTGTGGACAAAGGTGTCA  
 AAACGACCAACGCCAGTGCATCTGACCCAAGGGAGTACCTCTGCCTGGATAACAGTGAAGGTTTCGGCC  
 CCATCAGGATGCAGACCTGAGAAGCCACGCGTTGCCGCCATCATTGACAGGCTCATTGCTTTAAGAAC  
 AATGACAATGGAGCCTGGTCCGAGGAGGAGATATTATTGTTCAGAATTCAGCATTTCAGATAACGGAA  
 AGGGGCTGACCTTGGCAGTGTGGGAGCTTCCAAGCGATGAAGGTCCAGTCAAGGAGTACGGAGTC  
 CCTCTTTGTGGGAGAGTAGGAATTATGGCTTCAAGGTGGCCAAAACAAGTACATGGGCACAGGGGGA  
 ATCGATCAGAAGCCTCGGACGCTACCCAGGAACAGGACATTCCTCAATCCGAGGCTTTCAGATTTACGATG  
 GGCTATTCATCTCACAAGAGTACTTTCAAAAAGTATGTGCCAACTCCAGACAGGTACAGCAGTGAAT  
 TGGCTTCTCATGAAGAATTCTGGCAGACAACCCAGGAATAACGTTTCCCTTGTGAAGTTTGGTCCA  
 CAGGTCTCTGAACGCTTCTTTGAAAGCCTGGCCCTGGTTTGGAGATTGTGAGCTGGACGGCGATA  
 AGAACTCCATCTCCATGACATTGATGGCTCTGTGACAGGATACAAGGACACCTATGTGGGAAGGATGGA  
 CAACTACCTGATCCGCCATCCAACTGTGTCAATGTTACTAAGTGAATGCAGTGTCTGTAGCGGGACC  
 TACGCCAGGTGTATGTTGACACCTGGAACACTCCGAATCTTAGCATGATCATCACAGGGATGAATACC  
 CATCCCACCAATGGTGCTTCGGGTATCAACCAGAGGGCCATCTCCACAGTACCAGCCTGTCGTCAT  
 GCTGGAGAAGGGCTACACCATCCACTGGAATGGTCCAGCGCCACGAACCACTTTCTGTACCTCGTGAAC  
 TTCAACAAGGATGACTGGATCCGGTGGCCTCTGTTACCCAGCCAACACGAGCTTTCAGGTTACCGTTG  
 GCTTCTGCAGCGGCAGAACGGCTCATTATCTAGAATTGAGGACTATGAGCCTGCGCGGTGATGGAGGA  
 ACTGCAGAAGAAGCCGTCTGAGAGAAAATTCTATTTGACTCTGGCACAGGGTTATTGTTTCTGTATCTC  
 AGAGCCCACAGCCACAGAGATGGCCACAGTTACTGTTTCTCAGGGATGTGAAAGAGTCAAGATTCAGG  
 CAGCAACAGACTCCAAGATATCAGTAACATGCATGGCCAAAGCTTACCCGAGTATTACAAGAAGCCCTC  
 GCGGTCAAGCGCATGCCGCCATGCTCACGGGCTCTGTCAAGGCTGTGGAACCCACCAGATGGTGTTC  
 ACCAGTGACCTCACAAAAGCTACCTCCCTGTACGATTCCAGTACCTGGGAAAGCAGAAATTCAGCGAG  
 GAGATCCATCCATTATTTCCGTCAATGGTACTGACTTTACCTTCCGAGTGCAGGTTGCTCCTCCTCGT  
 TGTGGATGCCTGCAGTGTGCCTTCCGGTGAAGGAAAAGCGGATGTTCTTTCTGCAGACGTGAGTACAC  
 ATGGAAGAATATTTCAAGGCTAGCATCCCCCAAGGTCATCGTTCTGTTGAGCACAAGAGGAGAAATTA  
 AGCAGTGAATATCTCGGATTCATTAGCACTTCTGGGATTGGCCAAGCCAGCACATCTGTACAGCAAAGG  
 TAGTGTGCTATTTTTGGGATTCAGCGGAAACTTCGCACCGTCATGGACGAAGCTATTACCAGTCCCAAT  
 GAGCAGGGCTCGGAGTGCTTGGCAGTTTCTCCGTTGCAGATGGAGGAATATGGTTGCTCCCGGACCG  
 GCAGTGTCCACAGAAGAGACCTTGACCTGTTACAGCAGGCTTTGAAAGTGCTT

AC**GCGGCCGCT**CGAG - GFP Tag - GTTTAA

**Protein Sequence:** >MG210404 representing BC019745  
 Red=Cloning site Green=Tags(s)

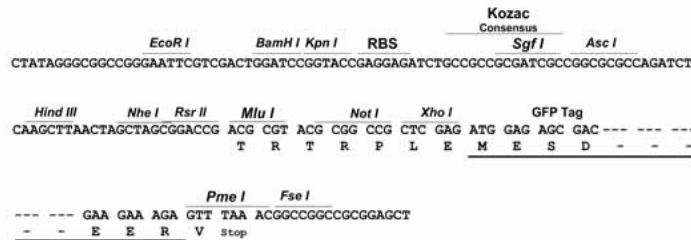
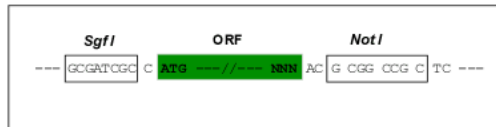
```
MRDGVFGNYVPVPTTDCMAVSTFWIAHPNNHLINNAAGSQDAGIYWLFHKEPTGESSGLQLEKPELTP
LGIFYNNRVHSNFKAGLFVDKGVKTTNASASDPREYLCLDNSARFRPHQDADPEKPRVAIIDRLIAFKN
NDNGAWVRGGDIIVQNSAFADNGKGLTFASDGSFSPDEGSSQEVTESLFVGESRNYGFQGGQNKYMGTTG
IDQKPRTLPRNRTFPIRGFQIYDGPiHLTKSTFKKYVPTPDRYSSAIGFLMKNSWQTTPRNNVSLVKFGP
QVSLNVFFGKPGPWFEDCELDGDKNSIFHDIDGSVTGYKDTYVGRMDNYLIRHPNCVNVTKWNAVICSGT
YAQYVVQTWNTPNLSMIITRDEYPSHPMVLRGINQRAISPQYQPVMLEKGYTIHWNGPAPRTTFLYLVN
FNKDDWIRVGLCYPANTSFQVTVGFLQRQNGSLSRIEDYEPARSMEELQKKPSEKRYFYDSGTGLLLFLYL
RAHSHRDGHSYSSQGCERVKIQAATDSKDISNCMAKAYPQYKPSAVKMPAMLTGLCQCGGTHQMVF
TSDPHKSYLPIRVFQSPGKAEIQRGDPSIISVNGTDFTFRSAGVLLLVDACSVFPRVKEKRMFLSADVSH
MEEYFKASIPRSIVLLSTRGEIKQLNISDSLALLGLAKPAHLYSKGSVFLGFSGNFAPSWTKLFTSPN
EQGLGVLEQFLPLQMEEYGCSRTGSVHRRDLDLLQQALKVL
```

TRPLE - GFP Tag - V

**Restriction Sites:** SgfI-NotI

**Cloning Scheme:**

Cloning sites used for ORF Shutting:



**ACCN:** BC019745

**ORF Size:** 2225 bp

**OTI Disclaimer:** The molecular sequence of this clone aligns with the gene accession number as a point of reference only. However, individual transcript sequences of the same gene can differ through naturally occurring variations (e.g. polymorphisms), each with its own valid existence. This clone is substantially in agreement with the reference, but a complete review of all prevailing variants is recommended prior to use. [More info](#)

**OTI Annotation:** This clone was engineered to express the complete ORF with an expression tag. Expression varies depending on the nature of the gene.

**Components:** The ORF clone is ion-exchange column purified and shipped in a 2D barcoded Matrix tube containing 10ug of transfection-ready, dried plasmid DNA (reconstitute with 100 ul of water).

**Reconstitution Method:**

1. Centrifuge at 5,000xg for 5min.
2. Carefully open the tube and add 100ul of sterile water to dissolve the DNA.
3. Close the tube and incubate for 10 minutes at room temperature.
4. Briefly vortex the tube and then do a quick spin (less than 5000xg) to concentrate the liquid at the bottom.
5. Store the suspended plasmid at -20°C. The DNA is stable for at least one year from date of shipping when stored at -20°C.

**RefSeq:** [BC019745](#), [AAH19745](#)

**RefSeq Size:** 2374 bp

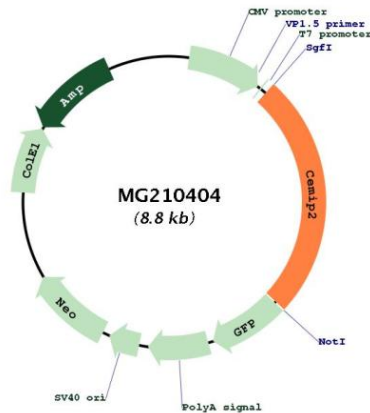
**RefSeq ORF:** 2225 bp

**Locus ID:** 83921

**Cytogenetics:** 19 B

**Gene Summary:** Cell surface hyaluronidase that mediates the initial cleavage of extracellular high-molecular-weight hyaluronan into intermediate-size hyaluronan of approximately 5 kDa fragments (By similarity). Acts as a regulator of angiogenesis and heart morphogenesis by mediating degradation of extracellular hyaluronan, thereby regulating VEGF signaling (By similarity). Is very specific to hyaluronan; not able to cleave chondroitin sulfate or dermatan sulfate (By similarity).[UniProtKB/Swiss-Prot Function]

**Product images:**



Circular map for MG210404