

Product datasheet for **MG210394**

Acap1 (NM_153788) Mouse Tagged ORF Clone

Product data:

Product Type:	Expression Plasmids
Product Name:	Acap1 (NM_153788) Mouse Tagged ORF Clone
Tag:	TurboGFP
Symbol:	Acap1
Synonyms:	Centb1
Mammalian Cell Selection:	Neomycin
Vector:	pCMV6-AC-GFP (PS100010)
E. coli Selection:	Ampicillin (100 ug/mL)



[View online »](#)

ORF Nucleotide Sequence:

>MG210394 representing NM_153788
 Red=Cloning site Blue=ORF Green=Tags(s)

TTTTGTAATACGACTCACTATAGGGCGGCCGGAATTCGTCGACTGGATCCGGTACCGAGGAGATCTGCC
 GCC**CGGATCGCC**

ATGACGGTCAAGCTAGATTTTGAAGAATGTCTCAAGGACTCACCCCGCTCCGAGCCTCGATTGAACTGG
 TGGAAACTGAAGTGTGAGAATTGGAGACCCGCCTGGAAAAGCTGCTAAAGCTGGGTTCTGCCTCCTGGA
 GAGCGGACAGCATTACCTTGCTGCCGGTCTGCTCCTTCGTTGTTGGCATCTGTGACCTGGCTCGCCTGGT
 CCACCAGAGCCATGATGGCGGAGTGTCTGAAAAAATTCACCGTGAGTCTGAACCACAACTGGACAGCC
 ATGCTGAGCTTCTTGATGCTACTCAACATACTGCAGCAGCAAATCCAGACTCTGGTCAAGGAAGTCT
 CCGGGGCTCCGAGAGGCTCGCAGGGATTTCTGGCGAGGGGCTGAGAACCTGGAGGCTGCTTTACCCAC
 AATGCAGAGGTCCCAGGCGCGTGTCCAAGAAGCAGAGGAGGCTGGAACCTGCTTTGAGGACCGCTCGAG
 CTGGGTACCGGAGTCGGGCATTAGATTATGCCCTGCAGGTCAATGTGATTGAGGATAAGAGGAAGTTCGA
 CATCATGGAATTCGTAATGCGCTTGGTTGAGGCCAGGCCACTATTTCCAGCAGGGCCATGAAGAGCTA
 AACAGGCTGGCTCAGTATCGGAAGGAATTGGGTACCCAGTTGCACAACCTGGTCTTGAACCTCAGCTCGAC
 AGAAGAGAGACATGGAACAGAGGCATGTGTTACTGAAGCAGAAGGAGCTGGTGGCGAGGAGCCAGAGCC
 AAGCCTAAAGGAGGGGCTAGTGGCTTGGTAATGGAAGGACATCTTTTCAAACGTGCCAGCAATGCATTT
 AAGACCTGGAGCAGACGCTGGTTCACCATTCAGAAACACAGCTGGTTTACCAGAAGAAATAAAGGACC
 CTGTAACCGTGGTGGTAGACGACCTTCGCTCTGTACAGTGAAGCTCTGTCCAGACTCAGAAAGGCGTTT
 CTGTTTCGAAGTAGTGTCCACCAGCAAGTCTGTTTCTCCAGGCTGACTCTGAGCGTCTCCTGCAGCTG
 TGGGTCACTGTGTCCAGAGCAGCATTGCCTCAGCCTTCAGCCAGGCTCACCTGGAGAACAGCCCTCGGG
 GGCCAGGCCAGGTCTCAGGATACCATGCCCGGGCTCTGCTGCAACTCTGGCCTGTGGCGGGCAGCCAG
 AGGAAGGGAGTCTGGAGGAGTTGGTCAGGTAGCGGCCAGGTACAAAGCGTGGATGGAAATGCGCAATGC
 TGCAGTGCAGGGAGCCAGCCCCAGAGTGGGCCAGCATCAACCTTGGCGTCACTCTCTGCATTCACTGTT
 CTGGCATCCACAGGAGCCTCGGAGTTCATTTCTCAAAGTCCGCTCTCTGACCCTTGACTCCTGGGAACC
 AGAACTGGTGAAGCTTATGTGCGAGCTGGGGAATGTCATCATCAACCAGATCTATGAGGCCCGGGTGGAG
 GCCATGGCGGTGAAGAAGCCAGGGCCAGCTGCTCCCGCAGGAAAAGGAAGCCTGGATTATGCCAAGT
 ATGTGGAGAAAAAGTTCCTGACCAAACCTCCTGAAATCCGTGGGCGAAGAGGTGGCAGGGGACCCCAAG
 AGGACATCCTCCTGTGCCCCAAAGCCTCCCATCAGGCCACACTCGGGCATTGTCAGATCCAAATCAGAG
 TGCCCGTCTGATGACATGGGAAGCTGCACCCCGGGCCCTGCTGTTTCAAGCTGCTGGACATCCCCAT
 CTCTTCTACCATGGCTGATGCCCTGGCCATGGAGCTGATGTCAACTGGGTCAATGTGGCCAGGGGAA
 TGCCACACCTCTGATCCGGGCCACAGCTGCTAACTCTTCTGGCCTGCGAGTTTCTCTCCAAAATGGG
 GCGAATGTGAACCAAGCAGACAGTGCAGGCCGGGCTCCTCTCCACCATGCCACCATTTCTGGTCACACAG
 GGCTCGCTTGCCTGTTCTGAAACGGGGTGTGATCTGGGGGCTCGAGACACAGAAGGCAGGGACCCCTCT
 GACTATCGCAATGGAAACCACTAATGCTGACATCGTAACCCTGCTACGATTGGCAAAGATGAGGGAGGCT
 GAAGCGGCCAGGGCCAGGCAGGAGACGAGACGTATCTCGACATATCCGAGACTTCTCCCTCATGGCGT
 CGGACGACCCAGAGAACTGAGCCGTGCGAGTCACGACCTCCATACTCTG

ACGCGTACGCGGCCGCTCGAG - GFP Tag - GTTTAA

Protein Sequence: >MG210394 representing NM_153788
 Red=Cloning site Green=Tags(s)

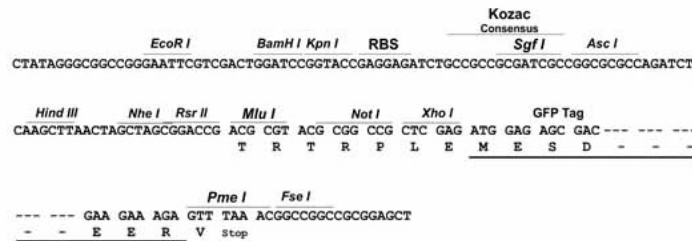
MTVKLDFEELKDSPPRFASIELVETEVSLETRLEKLLKLGSCLLLESGQHLYLAAGRAVVGICDLARLG
 PPEPMAECLKFTVSLNHKLDSHAELLDATQHTLQQIQTLVKEGLRGFREARRDFWRGAENLEALTH
 NAEVPRRRVQEAEEAGTALRTARAGYRSRALDYALQVNVIEDKRFKFDIMEFVLRLEVAQATYFQQGHEEL
 NRLAQYRKELGTQLHNLVLNSARQKRDMEQRHVLLKQKELGGEEPEPSLKEGPSGLVMEGHLFKRASNAF
 KTWSRRWFTIQNNQLVYQKYYKDPVTVVVDDLRLCTVKLCPDSERRFCFEVVSTSKSCFLQADSERLLQL
 WYSAVQSSIASAFSAHLENSPRPGQVSGYHAPGSAATLACGGAARGRESGGVGVQVAAQVQSVQDGNAC
 CDCREPAPEWASINLGVTLCIQCSGIHRS LGVHFSKVRSLTLDSEPELVKLMCELG NVIINQIYEARVE
 AMAVKKPGPSCSRQEKEAWIHAKYVEKKFLTKLPEIRGRRGGGPPRGHPVPPKPPIRPHSGIVRSKSE
 CPSDDMGSLHPGALLFQAAGHPPSLPTMADALAHGADVNVVNVGQGNATPLIRATAANSL LACEFLLQNG
 ANVNQADSAGRPLHATILGHTGLACFLKRGADLGARDTEGRDPLTIAMETT NADIVTLLRLAKMREA
 EAAQGGAGDETYLDIFRDFSLMASDDPEKLSRRSHDLHTL

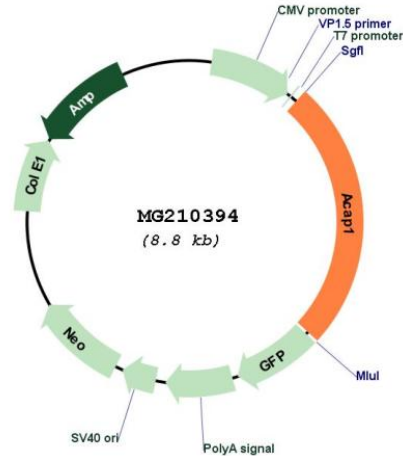
TRTRPLE - GFP Tag - V

Restriction Sites: SgfI-MluI

Cloning Scheme:

Cloning sites used for ORF Shutting:



Plasmid Map:


ACCN: NM_153788

ORF Size: 2220 bp

OTI Disclaimer: The molecular sequence of this clone aligns with the gene accession number as a point of reference only. However, individual transcript sequences of the same gene can differ through naturally occurring variations (e.g. polymorphisms), each with its own valid existence. This clone is substantially in agreement with the reference, but a complete review of all prevailing variants is recommended prior to use. [More info](#)

OTI Annotation: This clone was engineered to express the complete ORF with an expression tag. Expression varies depending on the nature of the gene.

Components: The ORF clone is ion-exchange column purified and shipped in a 2D barcoded Matrix tube containing 10ug of transfection-ready, dried plasmid DNA (reconstitute with 100 ul of water).

Reconstitution Method:

1. Centrifuge at 5,000xg for 5min.
2. Carefully open the tube and add 100ul of sterile water to dissolve the DNA.
3. Close the tube and incubate for 10 minutes at room temperature.
4. Briefly vortex the tube and then do a quick spin (less than 5000xg) to concentrate the liquid at the bottom.
5. Store the suspended plasmid at -20°C. The DNA is stable for at least one year from date of shipping when stored at -20°C.

RefSeq: [NM_153788.2](#)

RefSeq Size: 2482 bp

RefSeq ORF: 2223 bp

Locus ID: 216859

UniProt ID: [Q8K2H4](#)

Cytogenetics: 11 B3

Gene Summary: GTPase-activating protein (GAP) for ADP ribosylation factor 6 (ARF6) required for clathrin-dependent export of proteins from recycling endosomes to trans-Golgi network and cell surface. Required for regulated export of ITGB1 from recycling endosomes to the cell surface and ITGB1-dependent cell migration (By similarity).[UniProtKB/Swiss-Prot Function]