

Product datasheet for **MG210381**

Gys1 (NM_030678) Mouse Tagged ORF Clone

Product data:

Product Type:	Expression Plasmids
Product Name:	Gys1 (NM_030678) Mouse Tagged ORF Clone
Tag:	TurboGFP
Symbol:	Gys1
Synonyms:	Gys3; MGS
Mammalian Cell Selection:	Neomycin
Vector:	pCMV6-AC-GFP (PS100010)
E. coli Selection:	Ampicillin (100 ug/mL)



[View online »](#)

ORF Nucleotide
Sequence:

>MG210381 representing NM_030678
Red=Cloning site Blue=ORF Green=Tags(s)

TTTTGTAATACGACTCACTATAGGGCGGCCGGAATTCGTCGACTGGATCCGGTACCGAGGAGATCTGCC
GCCGCGATCGCC

ATGCCTCTCAGCCGAGTCTCTCTGTGTCTCGTTCAGGATTGGAAGACTGGGAGGATGAATTCGACC
CCGAGAACGACAGTGTCTTTTCGAGGTGGCTGGGAGGTGGCCAACAAGGTGGGTGGCATCTACACTGTGCT
GCAGACGAAGGCCAAGGTGACAGGGGATGAATGGGGTGACAACACTACTATCTGGTGGGACCATACACGGAG
CAGGGTGTGAGGACGCAGGTAGAGCTCCTGGAGCCCCAACTCCGGAACCTGAAGAGGACTTTGGATTCCA
TGAACAGCAAGGGTTGTAAGGTGATTTTGGGCGTTGGCTGATCGAGGGGGACCCTAGTGGTCTCT
GGATGTAGGAGCCTCAGCCTGGGCCCTGGAGCGCTGGAAGGGTGAGCTTTGGGACACCTGCAACATCGGG
GTACCCTGGTACGACCGGAGGCCAATGACGCTGTCTGTTCCGGTTCCTCACCACCTGGTTCCTGGGTG
AGTTCCTGGCCCAGAACGAAGAGAAGCCGTATGTGGTTGCCACTCCACGAATGGTTGGCTGGCGTTGG
TCTGTGTCTGTGCCGTGCCCGGCGCTTGGCGGTGGCAACCATCTCACCACCTCACGCCACGCTGCTGGGG
CGCTACCTGTGTGCTGGCGCTGTGGACTTCTACAACAACCTGGAGAATTTCAATGTAGACAAGGAAGCAG
GAGAGAGGCAGATCTATACCGGTACTGCATGGAGCGTGACGAGCTCACTGTGCCCATGTCTTCACTAC
CGTATCCCAGATCACCGAATCGAGGCTCAACACCTCCTTAAGAGAAAACCAGATATTGTGACCCCCAAC
GGGCTGAATGTGAAGAAGTTCTCTGCTATGCACGAATTCAGAACCTTCATGCTCAGAGCAAAGCACGAA
TCCAGGAATTTGTGCGTGGCCATTTTTATGGGCACCTGGACTTCAACCTAGACAAGACTTTGATTTCTT
TATCGCTGGCCGCTATGAGTTTTCCAACAAGGGAGCTGATGTGTTCTGGAGGCATTGGCCCCGCTCAAC
TATCTGCTCAGAGTGAATGGCAGTGAGCAAACAGTTGTCGATTCTTCATCATGCCGGCCCGGACCAATA
ATTTCAACGTGGAAACCCTGAAGGGCCAAGCCGTGCGCAAACAACATATGGGACACAGCCAATACAGTCAA
GGAGAAAATTTGGGAGGAAGCTCTATGAATCCCTTTTGTAGGGGAGCCCTCCCGGACATGAACAAGATGCTG
GACAAGGAGGACTTCACTATGATGAAGAGGCCATCTTTGCCACTCAGCGGCAGTCTTCCACCAGTGT
GCACCCACAACATGCTGGACGACTCCTCAGACCCCATCTTGACCACCATCCGCCGAATTGGCCTTTTCAA
CAGCAGTGCCGACCGTGTGAAGGTGATTTTTACCCAGAAATTCCTTTCTCCACAAGCCCTCTCCTCCCC
GTGGATTATGAGGAATTTGTCCGCGCTGTACCTTGGGGTCTCCCTCCTACTATGAGCCCTGGGGCT
ACACACCAGCGGAGTGCACTGTCATGGGCATCCCAGCATCTCCACCAACCTCTCCGGCTTTGGCTGCTT
TATGGAGGAACACATCGCAGATCCCTCAGCTTACGGCATTACATTCTGGATCGGAGTTCCGCAGCCTG
GATGATTCATGCTCACAGCTCACCTCCTCCTGTACAGCTTCTGCCAGCAGAGCCGGCGACAGCGCATCA
TCCAGCGGAACCCACAGAACGGTTGTCCGACTTGCTAGATTGGAAGTACCTGGGCCGGTACTACATGTC
TGCCGCGCCACATGGCTCTGGCCAAGGCCTTTCCAGACCACTTACCTATGAACCCATGAGGTAGATGCG
ACCCAGGGGTACCGGTACCCACGACCAGCCTCCGTCCCAGCGTCCGCTCACTGTCTCGACACTCCAGCC
CACACCAGAGTGAGGATGAGGAAGAGCCACGGGATGGACCCCTGGGGGAAGACAGTGAGCGTTATGATGA
GGAAGAGGAGGCTGCCAAGGACCGCCGAACATCCGGGCACCTGAGTGGCCACGCAGGGCCCTCCTGTTCC
TCCTCCACAGGTGGCAGCAAGAGAAGCAACTCGGTGGACACTGGGCCCTCCAGCTCACTCAGCACACCCA
CTGAGCCCCTGATCCTACCAGTTCCTGGGTGAGGAGCGCAAC

ACGCGTACGCGGCCGCTCGAG - GFP Tag - GTTTAA

Protein Sequence: >MG210381 representing NM_030678
 Red=Cloning site Green=Tags(s)

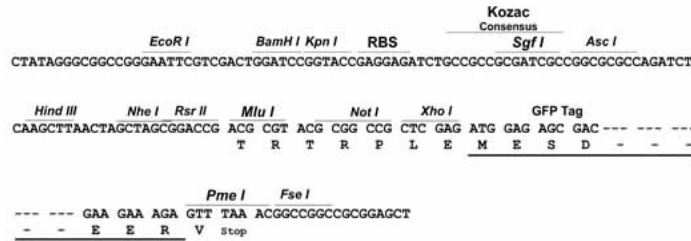
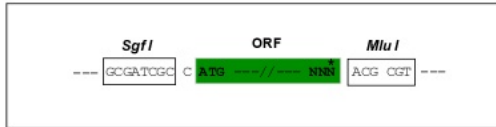
MPLSRSLSVSSLPGLEDWEDEFDPENAVLFEVAWEVANKVGGIYTVLQTKAKVTGDEWGDNYLVGPYTE
 QGVRTQVELLEPPTPELKRITLDSMNSKGCKVYFGRWLEGGPLVLLDVGASAWALERWKGELWDCNIG
 VPWYDREANDAVLFGFLTTFWLGFLAQNEEKPYVVAHFHEWLAGVGLCLCRARRLPVATIFTTHTALLG
 RYL CAGAVDFYNNLENFNVDKEAGERQIYHRYCMERAAAHCAHVFTTTSQITAIEAQHLLKRKPDIVTPN
 GLNVKKFSAMHEFQNLHAQSKARIQEFVRGHFYGHLDNFNDKTLYFFIAGRYEFSNKGADVFLAALARN
 YLLRVNGSEQTVVAFFIMPARTNNFNVELTKGQAVRKQLWDTANTVKEKFGKLYESLLVGLSPDMNKML
 DKEDFTMMKRAIFATQRQSFPPVCTHNMLDDSSDPILTTIRRIGLFNSSADRVKVIHFPEFLSSTSPLLP
 VDYEYFVRGCHLVGPSYEPWGYTPAECTVMGIPSTNLSGFGCFMEEHIADPSAYGIYILDRFRSL
 DDSCSQLTSFLYSFCQQSRRQRIIQNRTERLSDLLDWKYLGRYYMSARHMALAKAFPDPHFYEPHEVDA
 TQGYRYPASVPPSPSLSRHSSPHQSEDEEPRDGPLGEDSERYDEEEEAAKDRRNIRAPEWPRRASC
 SSTGGSKRSNSVDTGPSSSLSTPTEPLSPTSSLGEERN

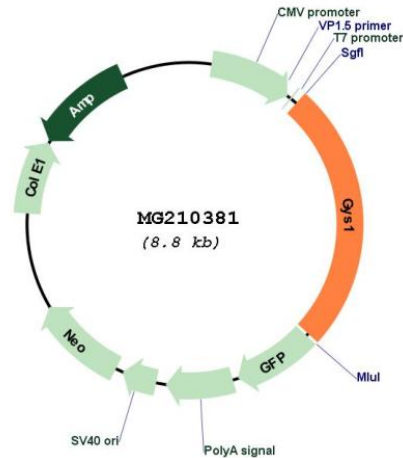
TRTRPLE - GFP Tag - V

Restriction Sites: SgfI-MluI

Cloning Scheme:

Cloning sites used for ORF Shutting:



Plasmid Map:


ACCN: NM_030678

ORF Size: 2214 bp

OTI Disclaimer: The molecular sequence of this clone aligns with the gene accession number as a point of reference only. However, individual transcript sequences of the same gene can differ through naturally occurring variations (e.g. polymorphisms), each with its own valid existence. This clone is substantially in agreement with the reference, but a complete review of all prevailing variants is recommended prior to use. [More info](#)

OTI Annotation: This clone was engineered to express the complete ORF with an expression tag. Expression varies depending on the nature of the gene.

Components: The ORF clone is ion-exchange column purified and shipped in a 2D barcoded Matrix tube containing 10ug of transfection-ready, dried plasmid DNA (reconstitute with 100 ul of water).

Reconstitution Method:

1. Centrifuge at 5,000xg for 5min.
2. Carefully open the tube and add 100ul of sterile water to dissolve the DNA.
3. Close the tube and incubate for 10 minutes at room temperature.
4. Briefly vortex the tube and then do a quick spin (less than 5000xg) to concentrate the liquid at the bottom.
5. Store the suspended plasmid at -20°C. The DNA is stable for at least one year from date of shipping when stored at -20°C.

RefSeq: [NM_030678.2](#)

RefSeq Size: 3681 bp

RefSeq ORF: 2217 bp

Locus ID: 14936

UniProt ID: [Q9Z1E4](#)

Cytogenetics: 7 29.31 cM

Gene Summary: Transfers the glycosyl residue from UDP-Glc to the non-reducing end of alpha-1,4-glucan.
[UniProtKB/Swiss-Prot Function]