

Product datasheet for **MG210372**

Zfp184 (NM_183014) Mouse Tagged ORF Clone

Product data:

Product Type:	Expression Plasmids
Product Name:	Zfp184 (NM_183014) Mouse Tagged ORF Clone
Tag:	TurboGFP
Symbol:	Zfp184
Synonyms:	4930500C15Rik
Mammalian Cell Selection:	Neomycin
Vector:	pCMV6-AC-GFP (PS100010)
E. coli Selection:	Ampicillin (100 ug/mL)



[View online »](#)

ORF Nucleotide
Sequence:

>MG210372 representing NM_183014
Red=Cloning site Blue=ORF Green=Tags(s)

TTTTGTAATACGACTCACTATAGGGCGGCCGGGAATTCGTCGACTGGATCCGGTACCGAGGAGATCTGCC
GCCGCGATCGCC

ATGGCAGGTCTGTCTTTGCAGACTCTGCCAGTCTCCACGAGGGACGTCCCCTACTCCTACCATCTAGTT
TTCGGGAATCAGTGACCTTCAAGGATGTGGTCGTGAACCTCACTCAGGAAGAATGGAAACACCTGGATCC
TATACAGAGAGATTTGTTTCAGAGATGTGACACTGGAAAATTATACACATCTGGTCTCTATAGGGCTCCAG
GTTTCCAAACCTGATATGATTTCCCAACTAGAGCAAGGGACAGAGCCATGGACTGAGGATTCGTGCATTC
CTGTGGTCCCTTGAAGACTGGAAGAAAAGAGCTGGAATAGTGTGTCATCCCTAGAACTTGACATTTT
TGAAGAGCATCTATTCTCAGAGACAGTAGTAACCAACAGCAAAGGGATGATGGGAGTTTAGAGAAGCTT
CAAGCAAACCAACAGATGCTGCCAAGGGAAGTCCAATAACGGAGAAAACAGCACCCTTGTGAGAGCA
ACCTCAGTGTGAGCTCAAGCTTCATAACACAAAACGGAAGTAGCTCTCGATCAGCCTTCCACTAAAACAAG
AGCCAAGCAGAATCCCACCCAGTTAAAAAGGAGAAGCTGTGTAAGTGAACGAATGTGGTAAAGCTTTT
ACTTACTGTTCTGCTCTCATTGCCACCAAGAACGCATCTGGAGAGAAAACCTATAAATGTAATGAAT
GTAACAAAGCTTTCAGCAGAAGTAAAAACCTTATAAACCATCAGAGAATCCATACGGGAGATAAACCGTA
CAAATGTGACCACTGTGGAAAGGTTTCATTGAGGGTCCATCTCTCACTCAACATCAAAGAATTCACACT
GGAGAAAAGCCCTATAAATGTGATGAATGTGGGAAAGCCCTTGTAGTGCAGAGACCCATCTTGTTCAGCATC
AGAGAATTCACACTGGTGAAGCCATATACTTGTACCGAGTGTGGGAAATCCTTCAGCCAGAGAGGTCA
CTTTATGGAGCACCAGAAAATTCATACAGGAGAAAAACCTTTCAAGTGTGAGGAGTGTGAGAAAACCTTC
ACCAGGAGCACACCTCACTCAACATCAGAAAATTCACACTGGGAGAAAACTTACAAGTGAATGAAT
GTGGGAAAGCCCTCAACGGCCCATCAACGTTTATCCGTCAACATATGATTCATACTGGAGAAAACCTTA
TGAGTGAATGAATGTGGCAAAGCCTTCAGCCAGCACTCAACCTGACTCAGCATCAGAAAACACACACT
GGGAGAAAACCTATGACTGTGAGAATGTGGGAAAGCCCTTGTAGTACTGGTTCATCCCTAGCTCAGCACC
TGAAAATTCATACAGGAGAGAAGCCCTACAAGTGTAGCGACTGCGGGAAGCCCTTCAGTACTGCTCCTC
CCTTACTCAGCATCGGAGGATTCACACCCGAGAGAAGCCCTTGTAGTGCAGTGTGGAAAGGCTTTC
AGCTATCTGTCAAACCTAATCAGCATCAGAAAATTCACACCCAGGAGAAAAGCCCTATGAATGTAAGGAAT
GTGGGAAAGCCCTTATTCGGAGTTCATCTCTTGTCAAGCATGAAAGAATTCATACTGGAGAGAAGCCTTA
TCAATGTCATGAATGTGGAAAAACCTTCAGCTATGGCTCATCTCTTATTCAGCATAAGAAAATCCATACT
GGTGAAAGACCTTACAAGTGAATGAATGTGGGCGAGCCTTCAACCAGAAAATACACCTTACACAACACA
AGAGAATTCATACAGGAGCAAAGCCGTATGCCTGCCCAAGTGGGGAAGACCTTTCGACTGTTTCATC
TCTTGCTCAACATCAAAAACTCACACAGAAGAAAACCTACCAGTGTAAACAAATGTGAAAAACCTTC
AGCCGAACTCCCGTCTGACTCAGCATCAGCGAATTCATACGGGAGAGAAGCCTTATAAGTGCAGTGAAT
GTGACAAATGCTTACCAGGAGCGTGCACCTGACTGAACATCGGAGTACTCACACTGGAGAGAAACCTTA
CAACTCTGAGTGCCACAGACTTTCAGCCAGAGCACATACCTCACTCAGCATCAGAAGATTCATTCAGGA
GAGAAGCTTTGGGGTGTGAGGACTGTGAAAAAGCCTTCCAGTGTCACTGTCTCTACCAAACACCAGA
GATTGCACCCTGCTGTGGCTGCTGTAGGAACATCATTAAACA

ACGCGTACGCGGCCGCTCGAG - GFP Tag - GTTTAA

Protein Sequence: >MG210372 representing NM_183014
 Red=Cloning site Green=Tags(s)

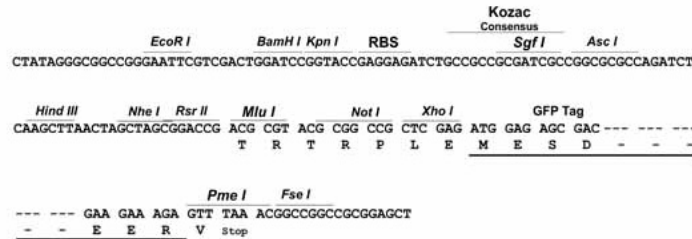
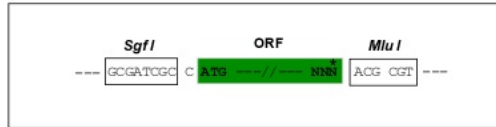
MAGLSFADSASLHEGRPLLLPSSFRESVTFKDVVVNFTQE EWKHLDP IQRDLFRDVTLENYTHLVSIGLQ
 VSKPDMISQLEQGTEPWTEDSCIPVGPLEDWKKRAGNSVSSLELDISEEHLFSETVVTNSKRDDGSLEKL
 QANQOQLPREVQITEKTAPTCSNL SVSSSFIQTQTEVALDQPSTKTRAKQNSHPVKKEKLCCKNECGKAF
 TYCSALIRHQRHTGKPYKCNENKAFSRSENLIHQRIHTGDKPYKCDQCGKGFIEGPSLTQHQRHT
 GEKPYKDECGKAFSQRTHLVQHQRHTGKPYCTECGKSFSQRGHFMEHQKIHTGKPFKCECEKTF
 TRSTHLTQHQRHTGKTYKCNENKAFNGPSTFIRHHMIHTGKPYECNECGKAFSQHSNLTQHQRHT
 GEKPYDCAECGKAFSYWSSLAQHLKIHTGKPYKSDCGKAFSYCSSLTQHRIHTREKPFECSECGKAF
 SYLSNLTQHQRHTGKAYECKEKGKAFIRSSSLAKHERIHTGKPYQCHECGKTF SYGSSLIQHKKIHT
 GERPYKCNENKAFNQIHLTQHKRIHTGAKPYACPKCGKTFRHCSSLAQHQRHTTEEKPYQCNKCEKTF
 SQNSRLTQHQRHTGKPYKCECDKCF TGSVHLTEHRSTHTGKPYNSECPQTF SQSTYLTQHQRHTHSG
 EKLLGCEDCEKAFQCHSALTKHQRHPVAVAVGTSLT

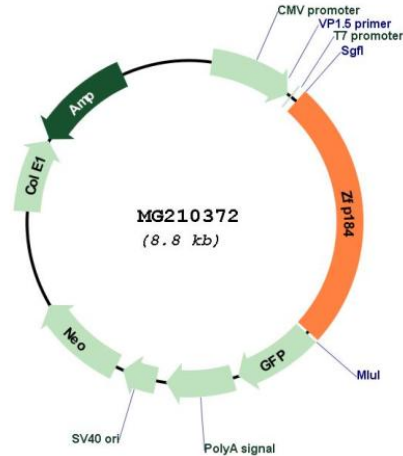
TRTRPLE - GFP Tag - V

Restriction Sites: SgfI-MluI

Cloning Scheme:

Cloning sites used for ORF Shutting:



Plasmid Map:


ACCN: NM_183014

ORF Size: 2211 bp

OTI Disclaimer: The molecular sequence of this clone aligns with the gene accession number as a point of reference only. However, individual transcript sequences of the same gene can differ through naturally occurring variations (e.g. polymorphisms), each with its own valid existence. This clone is substantially in agreement with the reference, but a complete review of all prevailing variants is recommended prior to use. [More info](#)

OTI Annotation: This clone was engineered to express the complete ORF with an expression tag. Expression varies depending on the nature of the gene.

Components: The ORF clone is ion-exchange column purified and shipped in a 2D barcoded Matrix tube containing 10ug of transfection-ready, dried plasmid DNA (reconstitute with 100 ul of water).

Reconstitution Method:

1. Centrifuge at 5,000xg for 5min.
2. Carefully open the tube and add 100ul of sterile water to dissolve the DNA.
3. Close the tube and incubate for 10 minutes at room temperature.
4. Briefly vortex the tube and then do a quick spin (less than 5000xg) to concentrate the liquid at the bottom.
5. Store the suspended plasmid at -20°C. The DNA is stable for at least one year from date of shipping when stored at -20°C.

RefSeq: [NM_183014.1](#), [NP_898835.1](#)

RefSeq Size: 2730 bp

RefSeq ORF: 2214 bp

Locus ID: 193452

UniProt ID: [Q7TSH9](#)

Cytogenetics: 13 A3.1

Gene Summary: May be involved in transcriptional regulation.[UniProtKB/Swiss-Prot Function]