

Product datasheet for **MG210367**

Apbb2 (BC076587) Mouse Tagged ORF Clone

Product data:

Product Type:	Expression Plasmids
Product Name:	Apbb2 (BC076587) Mouse Tagged ORF Clone
Tag:	TurboGFP
Symbol:	Apbb2
Synonyms:	2310007D03Rik; FE65L1; Rirl1; TR2L; Zfra
Mammalian Cell Selection:	Neomycin
Vector:	pCMV6-AC-GFP (PS100010)
E. coli Selection:	Ampicillin (100 ug/mL)



[View online »](#)

ORF Nucleotide Sequence:

>MG210367 representing BC076587
 Red=Cloning site Blue=ORF Green=Tags(s)

TTTTGTAATACGACTCACTATAGGGCGGCCGGAATTCGTCGACTGGATCCGGTACCGAGGAGATCTGCC
 GCC**CGCATCGCC**

ATGTCAGAAGTACTTCCAGCTGACTCAGGTGTTGGCACCTTGGCAGTGTATATGGCCAGCAGCGGATCCA
 CAGACATTGCAAACCGAACAGCCAGCCACACCACAAATACCTCAATCTCCGTTCTCCACAAATGA
 ACTATTAATGCAGAGATCAAACACTCAGATGCCAAGAACAGCACGCCCCCAAATGCAGGAAAAATAT
 GCACTGACTAATATTCAGGCGGCCATGGCCTCTCGGATCCAGCTGTACAGCCCTGCTGGGAAACGGCT
 CTGCCAACATCAAGCTGGTTAAAAATGGGGAGAACCAGCTCCGCAAGGCTGCAGAACAGGGGCAGCAGGA
 CCCCACAAGAACCTCAGCCCTGCAGCCGTCATCAACCTAACCTCCGAGAAGCTGGAGGTTAAAGATCCC
 CACCCACAGGAGTCTTCAGGCTGTGAGATTTTGCCTCCAGCCAGGAGAACTAAGAGCTTCTCAATT
 ACTATGCAGACCTGGAACCTCGGCTAGAGAGCTAGGGCAGAACCTGGGCCCTGCCAAGGGTTGGAGA
 GGAGAAAGCCAGCCTGGCCAGCCAGCCCCAGTAGTCATTGGGAATGGTACTTGTGCCACAGAAA
 CCAAACAACCCCAATCCAGCCAGAGGATGGCCAAGTAGCCACAGTATCGTCCAGCCAGAGACCAAGA
 AAGACCACCTAAAACAGGAGCCAAAACCGACTGTGCCCTCCATCGGATCCAGAACCTGGACCAAGTGA
 CGAGGAATCCAGCTGGACGACGCTGTCCAAGACAGTGCCTCCCCAGCTCCCCAGATGAAACAGATATC
 TGGAGTGATCACTCATTTAGACAGATCCCGATTTGCCGCGGGCTGGAAGAGAGTCAATGACATTGCCG
 GGACCTATTACTGGCACATCCCAACAGGGACGACTCAATGGGAACGGCCTGTCTCCATCCCAGCAGATCT
 CCACGGCTCTAGGAAAGGGTCACTTAGTTCTGTAAACGCCATCGCCACCCAGAGAATGAGGATTTGCAC
 GCAGCCACAGTTAACCCAGACCCAGTTTAAAAGAGTTTGAAGGAGCAACGCTACGCTATGCATCCTTGA
 AACTCAGAAACGCCCTCATGGTGATGACGATGATTCTTGTAGTATCAACAGTGACCCAGAAGCCAAGT
 TTTTGCTGTGCGTTCTCTGGGCTGGGTAGAGATGGCCGAGGAGGACCTTGCCCCCGGAAGAGCAGTGTC
 GCTGTCAACAACGATCCGACAGCTTTCTACTGCAAAAACGACATCCGGGACACAGTCCGCATCTGGG
 GAGAGGGCAAAGACATGTACCTGAGCCTGGAAAACGACATGCTCAGCCTGGTGGACCCCATGGACCGCTC
 CGTGTTACTACTCCAGCCATCGTGAACATCCGAGTGTGGGGCTGGGCCGAGACAACGGCCGGGACTTT
 GCTTACGTGGCGAGAGACAAGGACACAAGGATTCTGAAATGCCATGTGTTTCGATGTGACACACCAGCAA
 AAGCCATTGCCACAAGTCTCCACGAAATCTGCTCCAAGATTATGGCTGAACGGAAGAACGCCAAAGCACT
 GGCTGCAGCTCCTTACAGGAGAGGACCAATATGAGTCTCGATGTCCCTTGAAGTAGATTTTCCAACA
 CCAAAGACGGAGCTGGTGCAGAAGTTCCGCGTGCAGTACCTGGGCATGTTACCTGTAGACAGACCTGTCC
 GCATGGACACCCTGAACAGTGCCATAGAAAATCTCATGACGTATCCAGCAAGGAGGACTGGCCTTCGGT
 GAACATGAACGTGGCCGACGCCACTGTGACTGTATCAGTGAAAAGAATGAAGAGGAGGTCTTGGTGGAG
 TGTGAGTGTGCGTTCTGTCTTTCATGGGTGTCCGGAAGGATGTCCACACATTCCGCTTTCATGAGACA
 CTGGGAACAGCGCTTTGAGTGCCATGTGTTCTGGTGTGAGCCTAACGCAGCCAATGTGTGAGAAGCTGT
 CCAGGCTGCCTGCATGTTGCGGTATCAGAAGTGCTTGGTTGCCAGGCCACCTTCGCAGAAAGTCCGGCCC
 CCGCCCCGCCAGCAGATTCAGTGACCCGAAGAGTACGACCAATGTGAAACGAGGGGTCTTATCCCTCA
 TTGACACTTTGAAACAGAAGCGGCCGGTACAGAGACTCCC

ACGCGTACGCGGCCGCTCGAG - GFP Tag - GTTTAA

Protein Sequence: >MG210367 representing BC076587
 Red=Cloning site Green=Tags(s)

```
MSEVLPADSGVGT LAVFMASGSDIANRNSPATPPNTLNLRSSHNELLNAEIKHSDAKNSTPPKCRKKY
ALTNIIQAAMGLSDPAVQPLLGNLSANIKLVKNGENQLRKAEEQGQDPNKNLSPA VINLTSEKLEVKDP
HPQESSGCEILPSQPRRTKSFNLNYADLETSARELGQNLGPCQGVGEEKAQPGGQAPVVI GNGDLLPQK
PNKPQSSPEDGGVATVSSSPETKKDHPKTGAKTDCALHRIQNLAPSDEESSWTTLSQDSASPSSPDETDI
WSDHSFQTDPDLP PGWKR VNDIAGTY YWHIPTGTTQWERPVSI PADLHGSRKGSLSVTPSPPTPENEDLH
AATVNPDP SLKEFEGATLRYASLKL RNAPHGDDDDSCSINS DPEAKCFAVRSLGWVEMA EEDLAPGKSSV
AVNNCIRQLSYCKNDIRD TVGIWGEKDMYLSLENDMLSLVDPMDRSVLHSQPIVNI RVWVGVGRDNGRDF
AYVARDK DTRILKCHVFRCDTPAKAIATSLHEICSKIMAERKNAKALACSSLQERTNMSLDVPLQVDFPT
PKTEL VQKFRVQYL GMLPVDRPVGMDTLNSAIENLMTSSSKEDWPSVNMNVADATVTVISEKNEEVLVE
CRVRFLSFMGVGKDVHTFAFIMDTGNQRFECHVFWCEPNAANVSEAVQAACMLRYQKCLVARPPSQKVRP
PPPPADSVTRRVT TNV KRGVLSLIDTLKQKRPVTETP
```

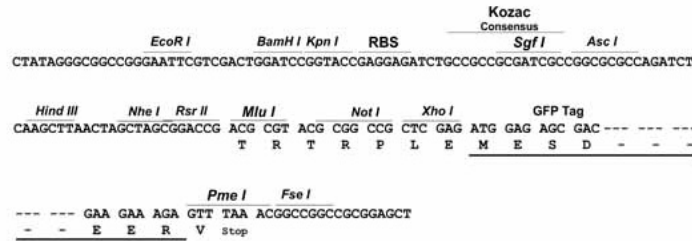
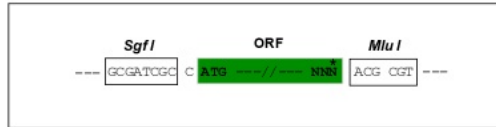
TRTRPLE - GFP Tag - V

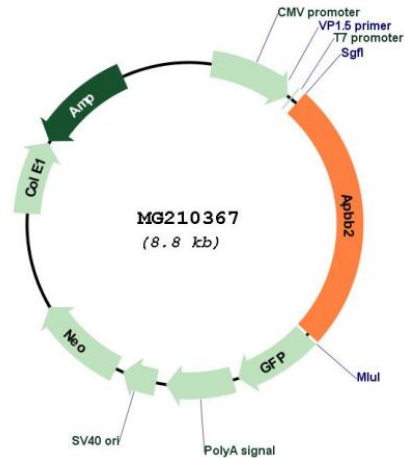
Restriction Sites:

SgfI-MluI

Cloning Scheme:

Cloning sites used for ORF Shuttling:



Plasmid Map:


ACCN: BC076587

ORF Size: 2213 bp

OTI Disclaimer: The molecular sequence of this clone aligns with the gene accession number as a point of reference only. However, individual transcript sequences of the same gene can differ through naturally occurring variations (e.g. polymorphisms), each with its own valid existence. This clone is substantially in agreement with the reference, but a complete review of all prevailing variants is recommended prior to use. [More info](#)

OTI Annotation: This clone was engineered to express the complete ORF with an expression tag. Expression varies depending on the nature of the gene.

Components: The ORF clone is ion-exchange column purified and shipped in a 2D barcoded Matrix tube containing 10ug of transfection-ready, dried plasmid DNA (reconstitute with 100 ul of water).

Reconstitution Method:

1. Centrifuge at 5,000xg for 5min.
2. Carefully open the tube and add 100ul of sterile water to dissolve the DNA.
3. Close the tube and incubate for 10 minutes at room temperature.
4. Briefly vortex the tube and then do a quick spin (less than 5000xg) to concentrate the liquid at the bottom.
5. Store the suspended plasmid at -20°C. The DNA is stable for at least one year from date of shipping when stored at -20°C.

RefSeq: [BC076587](#), [AAH76587](#)

RefSeq Size: 3303 bp

RefSeq ORF: 2213 bp

Locus ID: 11787

Cytogenetics: 5 C3.1

Gene Summary: May modulate the internalization of amyloid-beta precursor protein.[UniProtKB/Swiss-Prot Function]