

Product datasheet for **MG210366**

Ctcf (NM_007794) Mouse Tagged ORF Clone

Product data:

Product Type:	Expression Plasmids
Product Name:	Ctcf (NM_007794) Mouse Tagged ORF Clone
Tag:	TurboGFP
Symbol:	Ctcf
Synonyms:	AW108038
Mammalian Cell Selection:	Neomycin
Vector:	pCMV6-AC-GFP (PS100010)
E. coli Selection:	Ampicillin (100 ug/mL)



[View online »](#)

ORF Nucleotide
Sequence:

>MG210366 representing NM_007794
 Red=Cloning site Blue=ORF Green=Tags(s)

TTTTGTAATACGACTCACTATAGGGCGGCCGGGAATTCGTCGACTGGATCCGGTACCGAGGAGATCTGCC
 GCCCGCATCGCC

ATGGAAGGTGAGCGGTTGAAGCCATTGTGGAGGAGTCTGAAACTTTCATTAAAGGAAAAGAAAAGAAAGA
 CTTACCAGAGACGCCGGAAGGGGGCCAGGAAGAAGATGCTTGCCACCTGCCCCAGAACCAGACAGATGG
 GGTGAGGTGGTCCAGGATGTCAACAGCAGTGTACAGATGGTAATGATGGAACAGCTGGATCCTACCCTT
 CTCAGATGAAGACTGAAGTCATGGAGGTACAGTGGCTCCGGAAGCAGAGGCTGCACTGGACGATACCC
 AGATCATAACCTTGACAGTTGTAATAATGGAGGAACAGCCATTAACATAGGAGAGCTTCAGCTTGCCA
 AGTACCTGTTCTGTGACGGTACCTGTTGCTACTTCCAGTAGAAGAAGTTCAGGGGGCTTATGAGAAT
 GAAGTGTCTAAAGAGGGCCTTGACAGAAAGTGAACCGATGATATGCACACCTTACCTTTGCCTGAAGGAT
 TTCAGGTGGTAAAGTGGGGCCAATGGAGAAGTGGAGACACTAGAGCAGGGCGAGCTTCTCTCAGGA
 AGACTCTAGCTGGCAAAAAGACCAGACTATCAGCCACCAGCCAAAAAACAAGAAAACAAAAAGAGC
 AAACCTTCGTTACACAGAAGAGGGCAAGACGTGGATGTGTCTGTGTATGATTTTGGAGGAAGAACAGCAGG
 AAGGACTGCTGTCTGAGTTAATGCAGAGAAAAGTGTGGTAATATGAAGCCTCCGAAGCCAACAAAAAT
 TAAAAAAAAGGTGTAAGAAAAACATTCAGTGTGAGCTTTGAGTTACACATGTCCCGCGGTTCAAAAT
 TTGGATCGTCACATGAAAAGCCACACTGATGAGAGACCACACAAATGCCATCTGTGTGGCAGAGCATTCA
 GAACAGTGACCTCCTGAGGAATCATCTGAACACACACAGGTACTCGTCTCACAAAGTCCCAGACTG
 CGATATGGCCTTTGTGACCAGTGGAGAATTGGTGGGCATCGTCGTTATAAACACACTCATGAGAAAACA
 TTTAAGTGTCCATGTGTGATTATGCCAGTGTAGAAGTCAAGCAAAATTAACGACACATTCGCTCTCATA
 CTGGAGAGCGCCCGTTCAGTGCAGTTTGTGCAGTTATGCCAGCAGGGACACATACAAGTGAAGGCA
 TATGAGAACCCATTCAGGGGAAAAACCTTATGAATGTTATATTTGTCACGCTCGGTTTACCCAGAGTGGT
 ACCATGAAGATGCACATTTTACAGAAGCACAGAAAATGTGGCCAAATTCATTGTCCCCATTGTGACA
 CTGTATAGCCCGAAAAAGTGATTTGGGTGTCCACTTGCAGAAAGCAGCATTCTATATTGAACAGGGCAA
 AAAATGTCGCTACTGTGTGCTGTGTTTTCATGAGCGATATGCTCTCATCCAGCATCAAAAATCACACAAA
 AATGAGAAGCGCTTCAAGTGTGACCAGTGTGATTATGCTGTAGACAGGAGCGGCACATGATCATGCACA
 AGCGCACTCACACGGGGAGAAGCCTTATGCCTGCAGCCACTGCGACAAGACCTTCGCCAGAAACAGCT
 CCTCGACATGCATTTCAAGCGCTATCATGATCCCAACTTTGTCCCTGCTGCCTTTGTCTGTTCCAAGTGT
 GGGAAAACATTCACCCGCGGAACACAATGGCAAGACATGCAGATAACTGTGCTGGTCCAGATGGCGTAG
 AGGGGGAAAAATGGAGGGGAGACAAAGAAGAGCAACGAGGAAGAAAAAGAAAGATGCGATCTAAAAAGA
 AGACTCCTCTGACAGTGAAGAAAATGCTGAGCCGGATCTCGATGACAATGAGGAGGAGGAGGAGCCTGCT
 GTAGAAATTAACCTGAGCCAGAGCCTCAGCCCCAGCCTCCGCTCCACCTCAGCCTGTGGCCCCGGCCC
 CCCCACCTGCCAAGAAGAGAAGGGGGGACCTCCTGGAAGAACCAACCAGCCCAACAGAACAGCCAAC
 AGCCATCATTCAAGTCAAGATCAGAATACAGGTGCAATTGAGAACATTATAGTTGAAGTCAAAAAGGAG
 CCAGATGCCGAGCCTGCGGAGGGGAAGAAGAGGAGGCTCAGGCAGCCACCACAGACGCCCCCAACGGAG
 ACCTCACGCTGAGATGATCCTCAGCATGATGGACCG

ACGCGTACGCGGCCGCTCGAG - GFP Tag - GTTTAA

Protein Sequence: >MG210366 representing NM_007794
 Red=Cloning site Green=Tags(s)

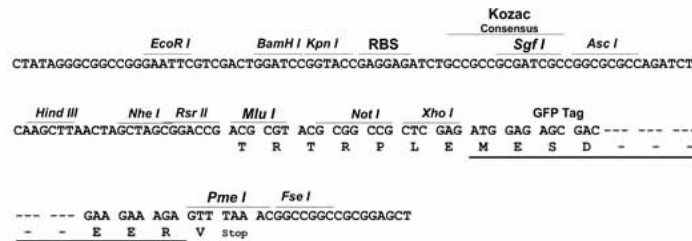
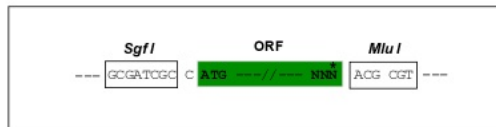
```
MEGEAVEAIVEESETFIK GKERKTYQRRREGGQEEDACHLPQNQTDGGEVVQDVNSSVQVMMEQLDPTL
LQMKTEVMEGTVAPEAAVDDTQIITLQVNMEEQPINIGELQLVQVPVPTVPVATTSVEELQGAYEN
EVSKEGLAESEPMICHTLPLPEGFQVVKVGANGEVETLEQGELEPPQEDSSWQKDPDYQPPAKKTKKTKKS
KLRYTEEGKDVDVSVYDFEEEEQQEGLLSEVNAEKVVGNMPPKPTKIKKKGVKKTFCCELCSYTCPRRSN
LDRHMKSHTERPHKCHLCGRAFRVTLLRNHLNTHGTTRPHKCPDCMAFVTSGELVRHRRYKHTHEKP
FKCSMCDYASVEVSKLKRHIRSHTGERPFQCSLCSYASRDYKLRHMRTHSGEKPYECYICHTARTQSG
TMKMHILQKHTENVAKFHCPHCDTVIARKSDLGVHLRKHQHSYIEQGGKCRYCDAVFHERYALIQHQKSHK
NEKRFKCDQCDYACRQERHMIMHKRTHTEKPYACSHCDKTFRQKQLDMHFKRYHDPNFVPAAFVCSKC
GKTFTRRNTMARHADNCAGPDGVEGENGGETKSKRGRKRMRKSKEDSSDSEENAEPDLDNNEEEEPAA
VEIEPEPEPQPQPPPPQPVPAPPPAKKRRRPPGRTNQPKNQPTAI IQVEDQNTGAIENIIVEVKKE
PDAEPAEGEEEAQAATTDAPNGDLTPMILSMMDR
```

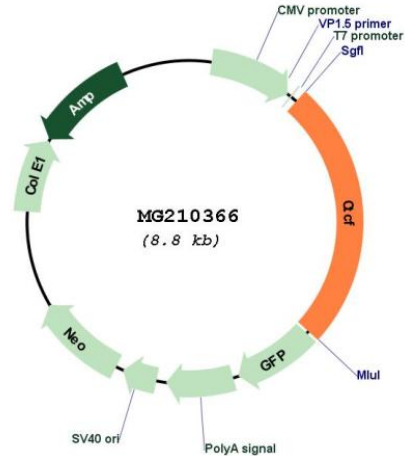
TRTRPLE - GFP Tag - V

Restriction Sites: SgfI-MluI

Cloning Scheme:

Cloning sites used for ORF Shutting:



Plasmid Map:


ACCN: NM_007794

ORF Size: 2210 bp

OTI Disclaimer: The molecular sequence of this clone aligns with the gene accession number as a point of reference only. However, individual transcript sequences of the same gene can differ through naturally occurring variations (e.g. polymorphisms), each with its own valid existence. This clone is substantially in agreement with the reference, but a complete review of all prevailing variants is recommended prior to use. [More info](#)

OTI Annotation: This clone was engineered to express the complete ORF with an expression tag. Expression varies depending on the nature of the gene.

Components: The ORF clone is ion-exchange column purified and shipped in a 2D barcoded Matrix tube containing 10ug of transfection-ready, dried plasmid DNA (reconstitute with 100 ul of water).

Reconstitution Method:

1. Centrifuge at 5,000xg for 5min.
2. Carefully open the tube and add 100ul of sterile water to dissolve the DNA.
3. Close the tube and incubate for 10 minutes at room temperature.
4. Briefly vortex the tube and then do a quick spin (less than 5000xg) to concentrate the liquid at the bottom.
5. Store the suspended plasmid at -20°C. The DNA is stable for at least one year from date of shipping when stored at -20°C.

RefSeq: [NM_007794.1](#)

RefSeq Size: 3840 bp

RefSeq ORF: 2210 bp

Locus ID: 13018

Cytogenetics: 8 D3

Gene Summary: Chromatin binding factor that binds to DNA sequence specific sites. Involved in transcriptional regulation by binding to chromatin insulators and preventing interaction between promoter and nearby enhancers and silencers. Acts as transcriptional repressor binding to promoters of vertebrate MYC gene and BAG1 gene. Also binds to the PLK and PIM1 promoters. Acts as a transcriptional activator of APP. Regulates APOA1/C3/A4/A5 gene cluster and controls MHC class II gene expression. Plays an essential role in oocyte and preimplantation embryo development by activating or repressing transcription. Seems to act as tumor suppressor. Plays a critical role in the epigenetic regulation. Participates in the allele-specific gene expression at the imprinted IGF2/H19 gene locus. On the maternal allele, binding within the H19 imprinting control region (ICR) mediates maternally inherited higher-order chromatin conformation to restrict enhancer access to IGF2. Plays a critical role in gene silencing over considerable distances in the genome. Preferentially interacts with unmethylated DNA, preventing spreading of CpG methylation and maintaining methylation-free zones. Inversely, binding to target sites is prevented by CpG methylation. Plays an important role in chromatin remodeling. Can dimerize when it is bound to different DNA sequences, mediating long-range chromatin looping (By similarity). Mediates interchromosomal association between IGF2/H19 and WSB1/NF1 and may direct distant DNA segments to a common transcription factory. Causes local loss of histone acetylation and gain of histone methylation in the beta-globin locus, without affecting transcription. When bound to chromatin, it provides an anchor point for nucleosomes positioning. Seems to be essential for homologous X-chromosome pairing. May participate with Tsix in establishing a regulatable epigenetic switch for X chromosome inactivation. May play a role in preventing the propagation of stable methylation at the escape genes from X-inactivation. Involved in sister chromatid cohesion. Associates with both centromeres and chromosomal arms during metaphase and required for cohesin localization to CTCF sites. Regulates asynchronous replication of IGF2/H19. Plays a role in the recruitment of CENPE to the pericentromeric/centromeric regions of the chromosome during mitosis (By similarity). [UniProtKB/Swiss-Prot Function]