

Product datasheet for **MG210353**

Mthfd1l (BC030437) Mouse Tagged ORF Clone

Product data:

Product Type:	Expression Plasmids
Product Name:	Mthfd1l (BC030437) Mouse Tagged ORF Clone
Tag:	TurboGFP
Symbol:	Mthfd1l
Synonyms:	2410004L15Rik; AI647056; Fthfsdc1
Mammalian Cell Selection:	Neomycin
Vector:	pCMV6-AC-GFP (PS100010)
E. coli Selection:	Ampicillin (100 ug/mL)



[View online »](#)

ORF Nucleotide
Sequence:

>MG210353 representing BC030437
Red=Cloning site Blue=ORF Green=Tags(s)

TTTTGTAATACGACTCACTATAGGGCGGCCGGAATTCGTCGACTGGATCCGGTACCGAGGAGATCTGCC
GCCGCGATCGCC

ATGACAATGAGCTGCCCTGGGCAACACCTCAGCTTCCAGACAAGCTTCGAGAGGCAGACATTGTGGTCT
TAGGCTCACCTAAGCCAGAAGAGATTCTGCTGGTGGATTCCATCAGGAACCACCATTCTCAATTGCTT
CCATGACTTCTTGTGAGGAAGCTGAGCGGAGGTTCTCCTGGGGTCCCGTGACAAACTCATTGCAGAA
GAGAGCGTGAGTCTCTTGTGCGGCTCTGCGCATTGAGAACATGGTGAGCAGCGGCAGGAGGTGGCTCA
GAGAGCAGCAACATCGAAGATGGCGACTGCACTGCTTAAAAGTGCAGCCTCTCTCACCTGTGCCAGTGA
TATTGAGATTTCTCGAGGACAGACTCCAAAAGCTGTGGATGTCTTGCCAAGGAGATAGGATTGCTTGA
GATGAAATTGAAATCTATGGCAAGAGCAAAGCCAAAGTCCAATTGTCCCTGCTGGAGAGGTTAAAGGATC
AAACAGATGGAATAACGTCTTGGTTGCTGGGATCACGCCACCCGCTCGGAGAAGGGAAGAGTACAGT
CACCATCGGACTAGTGCAGGCGCTGACCGCTCACCTGAAAAGTCAACTCCTTCGCCTGTCTGAGGCAGCCT
TCTCAGGGACCCACTTTTGGAGTGAAAAGGAGGAGCTGCAGGAGGTGGATATGCTCAGGTCATCCCCATGG
AGGAGTTCAACCTTACCTGACTGGGGACATCCATGCCATCACTGCCGCTAATAACTTGCTGGCCGAGC
CATCGACACGAGAATTTTACATGAGAGCACTCAAACAGACAAGGCTCTCTACAATCGACTGGTTCCTTA
GTGAATGGTGTGACAGAAATTTTACAGAAATCAACTTTCTCGGCTGAAGAAACTGGGGATACATAAGACTG
ATCCAAGCACACTGACCGAGGAGGAAGTGGGAAGTTCGCCCCTCAACATTGACCCCGCAACCATCAC
GTGGCAGAGAGTATTGGACACGAACGACCGATTCTGAGAAAAAATAACCATTGGACAGGGAAGTACAGAG
AAAGGATATCCCGCAGGCACAGTTTGACATTGCAGTGGCCAGCGAGATCATGGCCGTGCTGGCCTTGA
CTGATAGCCTCACAGACATGAAAGAGCGGCTAGGAAGAATGGTGGTGGCCAGTGACAAAGACGGCAGCC
TGTGACAGCTGAGGACTTGGGGTGACCGGCTCTGACAGTTTTGATGAAAGACGCCATCAAGCCAAAT
CTGATGCAGACCTTGAAGGAACACCTGTGTTGTGCATGCTGGTCCCTTGCCAACATCGCTCACGGCA
ACTCATCAGTATTAGCTGATAAAATCGCGCTGAAATTGGTGGGGAAGAGGTTTGTGGTACTGAAGC
TGGCTTTGGGCTGATATTGGGATGGAGAAATTTCAATATCAAATGCCGAGCTTCTGGCCTGGTGCCC
AACGTTGCTGCTGGTAGCCACCGTTCGAGCTCTGAAGATGCATGGAGGCGGGCCGAGTGAACCTGCTG
GGGTTCTCTCAAGAAAGAAATACAGAGGAGAACATTCAGCTGGTAGCTGATGGCTGCTGCAACCTACA
GAAGCAAATTCAGATCGCTCAGCTTTCGGGGTCCGGTGGTGGTGGCCACTGAATGTCTTCAAGACGGAC
ACCCGTGCAGAGATTGACTTGGTGTGTGAGCTCGCTAAACGGGCCGGTGCCTTTGATGCGGTCCCCTGCT
ATCACTGGTCCGCTGGAGGGAAGGATCTGTGGACTTGGCCCGGCTGTGAGAGAAGCTGCGAATAAAAG
AAGCCGCTTCAGTTCCTGTATGATGTTGAGCTTCCCATCGTGGAAAAGATAAGAGTCATTGCCAGACT
GTCTATGGAGCCAAGGACATTGAGCTGTCTCCTGAGGCGCAGTCCAAAATCGATCGCTATACGCAACAGG
GTTTTGAAATTTGCCATTTGCATGGCGAAGACCCACCTCTCTCTCTCATGAACCTGACAAAAGGG
AGTGCCGAGGGATTTCACTCTGCCATCAGTGTGTCCGGCCAGCATCGGGGCTGGGTTTCAATTTATCCT
TTGGTGGGAACGATGAGCACAATGCCAGGACTGCCACCCGACCTGCTTTTATGATATAGACCTTGACA
CAGAAACGGAGCAAGTTAAAGGCTTGTTT

ACGCGTACGCGGCCGCTCGAG - GFP Tag - GTTTAA

Protein Sequence: >MG210353 representing BC030437
 Red=Cloning site Green=Tags(s)

MTMSPWATPQLPDKLREADIVVLGSPKPEEIPAAWIPSGTTILNCFHDFLSGKLSGGSPGVPVDKLI
 ESVSLAAALRIQNMVSSGRRWLRQQHRRWRLHCLKLQPLSPVPSDIEISRGQTPKAVDVLAKEIGLLA
 DEIEIYGKSKAKVQLSLLERLKDQTDGKYVLVAGITPTPLGEGKSTVTIGLVQALTAHLKVN
 SFACLRQP SQGPTFGVKGAAGGGYAQVIPMEEFNLHLTGDIHAITAANLLAAAIDTRILHES
 TQTDKALYNRLVPL VNGVREFSEIQLSRLKKLGIHKTPSTLTEEEVRKFARLNIDPATITWQ
 RVLDTNDRFLRKITIGQGSTE KGYSRQAQFDIAVASEIMAVLALTDSL TDMKERLGRMVV
 ASDKDGQPVTAEDLGVGTGALTVLMKDAIKPN LMQTLEGPV FVHAGPFANIAHGNSSVL
 ADKIALKLVGEEGFVVEAGFGADIGMEKFFNIKCRASGLVP NVVVLVATVRALKMHGGP
 SVTAGVPLKKEYTEENIQLVADGCCNLQKQIQIAQLFGVPVVVALNVFKTD TRAEIDL
 VCELAKRAGAFDAVPCYHWSAGGKGSVDLARAVREAANKRSRFQFLYDVQLPIVEKIRVIA
 QT VYGAKDIELSPEAQSKIDRYTQQFGNLPICMAKTHLSLSHEPDKKGVPRDFTLPISD
 VRASIGAGFIYP LVGTMSTMPGLPTRPCFYDIDLDTETE QVKGLF

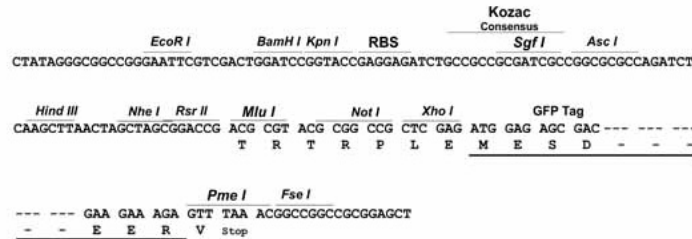
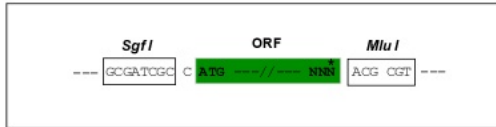
TRTRPLE - GFP Tag - V

Restriction Sites:

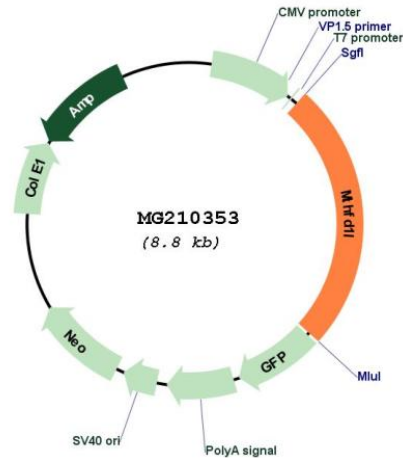
SgfI-MluI

Cloning Scheme:

Cloning sites used for ORF Shutting:



Plasmid Map:



ACCN: BC030437

ORF Size: 2201 bp

OTI Disclaimer: The molecular sequence of this clone aligns with the gene accession number as a point of reference only. However, individual transcript sequences of the same gene can differ through naturally occurring variations (e.g. polymorphisms), each with its own valid existence. This clone is substantially in agreement with the reference, but a complete review of all prevailing variants is recommended prior to use. [More info](#)

OTI Annotation: This clone was engineered to express the complete ORF with an expression tag. Expression varies depending on the nature of the gene.

Components: The ORF clone is ion-exchange column purified and shipped in a 2D barcoded Matrix tube containing 10ug of transfection-ready, dried plasmid DNA (reconstitute with 100 ul of water).

Reconstitution Method:

1. Centrifuge at 5,000xg for 5min.
2. Carefully open the tube and add 100ul of sterile water to dissolve the DNA.
3. Close the tube and incubate for 10 minutes at room temperature.
4. Briefly vortex the tube and then do a quick spin (less than 5000xg) to concentrate the liquid at the bottom.
5. Store the suspended plasmid at -20°C. The DNA is stable for at least one year from date of shipping when stored at -20°C.

RefSeq: [BC030437](#), [AAH30437](#)

RefSeq Size: 3061 bp

RefSeq ORF: 2201 bp

Locus ID: 270685

Cytogenetics: 10 A1

Gene Summary: May provide the missing metabolic reaction required to link the mitochondria and the cytoplasm in the mammalian model of one-carbon folate metabolism in embryonic an transformed cells complementing thus the enzymatic activities of MTHFD2.[UniProtKB/Swiss-Prot Function]