

## Product datasheet for **MG210329**

### Trim36 (BC058106) Mouse Tagged ORF Clone

#### Product data:

Product Type:	Expression Plasmids
Product Name:	Trim36 (BC058106) Mouse Tagged ORF Clone
Tag:	TurboGFP
Symbol:	Trim36
Synonyms:	D18Wsu100e; haprin
Mammalian Cell Selection:	Neomycin
Vector:	pCMV6-AC-GFP (PS100010)
E. coli Selection:	Ampicillin (100 ug/mL)



[View online »](#)

ORF Nucleotide  
Sequence:

>MG210329 representing BC058106  
Red=Cloning site Blue=ORF Green=Tags(s)

TTTTGTAATACGACTCACTATAGGGCGGCCGGAATTCGTCGACTGGATCCGGTACCGAGGAGATCTGCC  
GCCGCGATCGCC

ATGTCGGAATCAGAGGAGATAAGTGAATTTGGCTACATTATGGAATTGCTTGCCAAGGGCAAGGTGACTA  
TTAAGAATATCGAAAAGGAGCTTATTTGCCAGGCTGCAAGGAGCTGTTTACCCACCCGCTGATCCTTCC  
CTGCCAGCACAGCGTCTGTCAAGTGTGTGAAAGAACTTTACTGTCTCTTGATGACTCGTTCAATGAT  
GTGGCGTCAGACAGCTCAAATCAGAGCAGCCCTAGGCTCCGGCTCACCTCCCCTAGCATGGATAAAATCG  
ACAAGATTAACAGACCAGGCTGGAAGCGTAATTCAGTACCCCGAGACCAACCACGTTCCCTTGTCTGG  
CTGTGAACATGATGTGGATCTTGGAGAGCGAGGAGTCACTGGTCTGTTTCGAAATTTCACTTTGAAACG  
ATTGTCGAGAGATACCGGCAGGCCGCTAGGGCAGCCACAGCCATTATGTGTGACCTTTGTAACCTCCAC  
CCCAGGAATCTACAAAGAGCTGCATGGATTGTAGTGAAGCTACTGCAATGAATGCTTCAAATTTATCA  
TCCCTGGGGCAGTGTAAAAGCCAGCATGAGTATGTGGGCCCCACCACTAATTTTCAGACCAAGGTTCTA  
ATGTGCCCAGAACATGAGACAGAGAGAATAAATCATGTACTGTGAACTATGCAGAAGGCCAGTTTGCCACC  
TCTGTAAGTTGGGTGGGAATCATTCCAATCACCGGTAACCACCATGAGCAGTGCCTACAAAACCTTAA  
GGAGAACTTTCAAAGACATTGATTTCTTATTGGCAAGGAAAGCCAGGTGAAGAGTCAAATTTCTGAA  
CTAAACTTGCTAATGAAAGAGACAGAGTGAACGGAGAGAGGGCGAAGGAAGAAGCGCTGGCGCATTTTG  
AAAAGCTCTTTGAAATCCTGGAAGACAGGAAGTCGTCTGTTCTGAAAGCCATAGATGCCTCTAAGAACT  
AAGACTAGACAAGTTTCACTCAGATGGAAGAGTACCAAGGCCTTCTAGAGAATAACGGGCTCGTGGGG  
TATGCTCAGGAAGTCTGAAGGAGACGGATCAGTCTTGTCTTGTGCAGACGGCGAAGCAGCTCCATCTCA  
GAATACAGAAAAGCTACGGAGTCCCTGAAGAGCTTTAGACCTGCAGCCCAGGCTTCTTTGAAAGACTTGT  
TGTTAACATATCGAAACAACAGAGGTGCTTGGAGAGTTGTCCTTTTTTCTCCAGTGGCATAGACATTCT  
GAGATCAACGAGGAACAGAGTAAAGTGTATAATAACGCCTTGATAGACTGGCATCATCCAGAAAAGGACA  
AAGCCGACAGCTATGTTCTAGAATACCGCAAGATTAATAGAGACGAAGAAATGATATCATGGAATGAGAT  
AGAAGTTCACGGCACAAGTAAAGTTGTCTCCAACCTTGAAAGCAACAGTCCCTATGCGTTCGAGTGAGA  
GCTTACAGGGTTCTATCTGCAGTCCCTGCAGCAGAGAATTGATCCTGCATACTCCTCCAGCTCCAGTTT  
TCAGTTTCTGTTTCGATGAGAAGTGTGGCTACAACACTGAGCACCTTGTGCTGAACCTGAAGAGAGACCG  
GGTGGAGAGCAGAGCTGGATTTAACGTCTCCTGGCTGCGGAGCGCATCCAAGTGGGCCATTACACAAGC  
TTAGACTACATCATCGGGATGTGCGAGTACGAAAGGTAAACACTTCTGGGCCTGCCGCTGGAACCGT  
ATTCATACCTGGTGAAAGTGGGAGTTGCTTCCAGCGACAAACTGCAAGAGTGGCTGCGCTCTCCCGGAGA  
TGCAGCTAGTCCAAGATATGAGCAAGACAGTGGACATGACAGTGAAGCGAGGACGCCTGTTTTGATTCT  
TCACAGCCCTTACATTAGTTACTATAGGCATGAAGAAATTTTTATACCCAAGTCACTACTTCTCTCTA  
ATGAACCAGAAAACAGAGTTCTCCCAATGCCAACGAGTATAGGGATTTTCTTACTGTGATAAAGGCAA  
AGTGAGCTTCTATGATATGGACCACATGAAATGCCTGTATGAGCGCCAGGTGGACTGTTTCGCATACAATG  
TATCCGGCCTTTGCCTTGATGGGCAGCGGAGGAATTCAGCTTGAGGAAGCCATCACAGCAAAGTATCTGG  
AATATGAAGAGGATGTG

ACGCGTACGCGGCCGCTCGAG – GFP Tag – GTTTAA

**Protein Sequence:** >MG210329 representing BC058106  
 Red=Cloning site Green=Tags(s)

MSESEEISEFGYIMELLAKGKVTIKNIEKELICPACKELFTHPLILPCQHSVCHKCVKELLKSLDDSFND  
 VASDSSNQSSPRLRLTSPSMDKIDKINRPGWKRNLSLTPRPTTFPCPGCEHDVDLGERGVSGLFRNFLET  
 IVERYRQAARAATAIMCDLCKPPPQESTKSCMDCSASYCNECFKIYHPWGTVKAQHEYVGPFTNFRPKVL  
 MCPPEHETERINMYCELRRPVCHLCKLGGNHSNHRVTTMSSAYKTLKEKLSKDIDFLIGKESQVKSQISE  
 LNLLMKETECNGERAKEEALAHFEKLFELLEDKSSVLKADASKKLRLDKFHTQMEEYQGLLENGLVG  
 YAQEVLKETDQSCFVQTAKQLHLRIQKATESLKSFRPAAQASFEDYVVNI SKQTEVLGELSSFGIDIP  
 EINEEQSKVYNNALIDWHHPEKDKADSIVLEYRKINRDEEMISWNEIEVHGTSKVVSNLESNSPYAFRVR  
 AYRGSICSPSRELILHTPPAPVFSFLFDEKCGYNTEHLLNLKRDRVESRAGFNLLAAERIQVGHYTS  
 LDYIIGDVGVTGKHFACRVEPYSYLKVGVAASDKLQEWLRSRDAASPRYEQDSGHDSGSEDACFDS  
 SQPFTLVITGMKFFIPKSPSSNEPENRVLPMPTSIGIFLDCDKGKVSFYDMDHMKCLYERQVDCSHTM  
 YPAFALMGSGGIQLEEAITAKYLEYEEDV

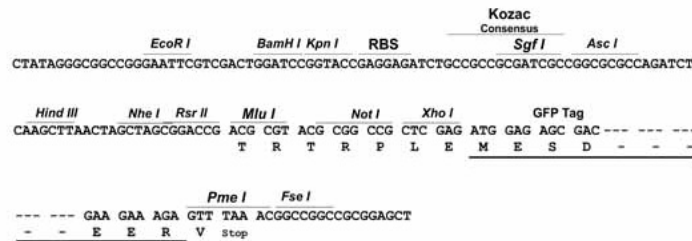
TRTRPLE - GFP Tag - V

**Restriction Sites:**

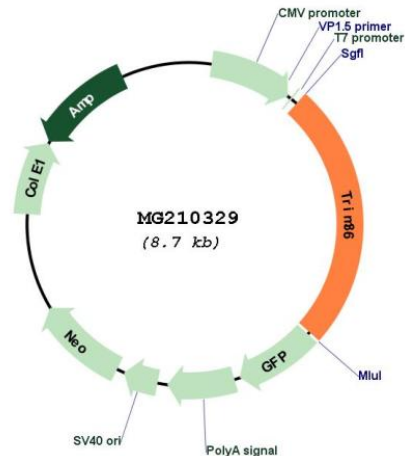
SgfI-MluI

**Cloning Scheme:**

Cloning sites used for ORF Shutting:



## Plasmid Map:



ACCN: BC058106

ORF Size: 2189 bp

OTI Disclaimer: The molecular sequence of this clone aligns with the gene accession number as a point of reference only. However, individual transcript sequences of the same gene can differ through naturally occurring variations (e.g. polymorphisms), each with its own valid existence. This clone is substantially in agreement with the reference, but a complete review of all prevailing variants is recommended prior to use. [More info](#)

OTI Annotation: This clone was engineered to express the complete ORF with an expression tag. Expression varies depending on the nature of the gene.

Components: The ORF clone is ion-exchange column purified and shipped in a 2D barcoded Matrix tube containing 10ug of transfection-ready, dried plasmid DNA (reconstitute with 100 ul of water).

Reconstitution Method:
 

1. Centrifuge at 5,000xg for 5min.
2. Carefully open the tube and add 100ul of sterile water to dissolve the DNA.
3. Close the tube and incubate for 10 minutes at room temperature.
4. Briefly vortex the tube and then do a quick spin (less than 5000xg) to concentrate the liquid at the bottom.
5. Store the suspended plasmid at -20°C. The DNA is stable for at least one year from date of shipping when stored at -20°C.

RefSeq: [BC058106](#), [AAH58106](#)

RefSeq Size: 3944 bp

RefSeq ORF: 2189 bp

Locus ID: 28105

**Cytogenetics:** 18 24.41 cM

**Gene Summary:** E3 ubiquitin-protein ligase which mediates ubiquitination and subsequent proteasomal degradation of target proteins (PubMed:19232519). Involved in chromosome segregation and cell cycle regulation (PubMed:19232519). May play a role in the acrosome reaction and fertilization (PubMed:12917430).[UniProtKB/Swiss-Prot Function]