

Product datasheet for **MG210324**

Plekhg3 (BC031136) Mouse Tagged ORF Clone

Product data:

Product Type:	Expression Plasmids
Product Name:	Plekhg3 (BC031136) Mouse Tagged ORF Clone
Tag:	TurboGFP
Symbol:	Plekhg3
Synonyms:	MGC40768
Mammalian Cell Selection:	Neomycin
Vector:	pCMV6-AC-GFP (PS100010)
E. coli Selection:	Ampicillin (100 ug/mL)



[View online »](#)

ORF Nucleotide Sequence:

>MG210324 representing BC031136
 Red=Cloning site Blue=ORF Green=Tags(s)

TTTTGTAATACGACTCACTATAGGGCGGCCGGGAATTCGTCGACTGGATCCGGTACCGAGGAGATCTGCC
 GCC**CGGATCGCC**

ATGAGCTTTGAGTCTGTTTCTTCCCTGCCAGAGTTGAGACAGATCCTGAGCCTGGGGCCGAGCAGGAGG
 CCTTTGCGGCCTTGAAGGTCCCAGCACAGAGGAGATGCCTTCAGACCCAGAATTTCCAGAAGCCCTGGA
 GACACAGCTTCATGCCCCCAAGGGGCTGCTAGGAGTGGACAACCCAGCTGCTGTGGTGGACTTTGTGGAG
 CCTGAGGGGTCTGAAGACCTTAAGCCCCTGAGTAGTGAGGAGGAAGAAGAAGAGGAAATGGAAGCCGCC
 AGGAGCCTGAGAGCCTCTGCCACCCTCTGTGCTGGACCAGGCCAGTGTCAATTGCTGAGAGATTCGCCAG
 TAGCTTCTCTCGGCGGAGCAGCCTGGCAATAGAGGATGGCAAATCCAGTGGTTTAGGGACACCACGGCTT
 ATCAGCCGGAGCAGCAGTGTGCTTAGCCTGGAGGGCAGTGATAAGGGCCTAGCCCGATGGAGCAGCATCG
 GGGACTCCCTCAGCAACCCACCCACCCAGAAGTGATCATTGGTGCAGACATGGTCACAGACAATGGCCC
 TTCTGTCAATGGGACAGAATCTCAAGTGCAGGCTCAGGCTGCCCCACGGAACAGGACAGATCTTCTGT
 AAGAAAAAAGAATCAGCGTTGTCTACCCGAGACCGTCAGCTGCTGGACAAAATTAAGAACTACTATGAAA
 ATGCAGAGCACCATGATGCTGGCTTCAGCATCCGTCGGCGGGAGAGCCTCTCCTATATCCCTAAAGGATT
 GGTGCGCAGCTCTGTGTCCAGATTCAACAGCCTTCCCAAGCCAGATTAGAGCCAGCAGCTCCAGTTGGG
 TACAAGAGGCCGGGAGTTCTCGTCCAGCCTCATGGACCTTGTGGTACCTTCCAGGTCCCAGGACAGACA
 AAGGGGACCCAGCTCCTATCACAGATGCTGAGTTCGTCATCTTCAGAAATGCAAAGATATGGGAAAG
 AATGGAGTCTTCAGAGAGAAGTCCACGGACAGGGTCTGGCCAGAGCCAGGCCAATGGCTTTGAGCTACAA
 GAGCCACTGTTTCATCTTGAGGAGCATGAACTGGGGCCATCACTGAGGAGTCTGCTGTGCGCTCTCCAG
 AAAGTCCCTCCCCACCCAGCAACCCAGCCAGCCACCTGGCCCGGGAGCTCAAAGAGCTGGTGAAGA
 GCTGAGCAGCAGTGTCCAGGGGAGCTGGTTACCCCACTGCACCCCGGATTGTGCAGCTCTCCCATGTG
 ATGGACAGCCATGTGAGTGAGCGGGTCAAAAACAAGGTCTACCAGTTGGCCCGCCAGTACAGCCTCCGAA
 TTAAGAACATCAAGGCAGCTAGGCCACCTCTACAGTGGGAAAAAGTCACTCCTGACCAAGAGGAGCAGGT
 CCCTTCCATTTCTGGCTGCCTGAGGAAGCTGGAGAGCTGTGAGGGGCAAGCCAGGAGGAAGCCTGTG
 CTATCCCTCCTCAGCTATGAGCAGCTGGTGGCTCAGGAGCATGGCACGTCCAAGTCTTCCGCTGCCGTGG
 AAACCTCTCCACGCCGTTTCTCCTTCAGCCCTTCTGCTGTAGCCCAAGAACCACCTCACCTGGGGCTCG
 GTCCTCTGCTCGGAGCCCTCAGCCCTTTGACACCGAGACCTCAATTGGCCTGATGTCCGGGAGCTC
 TGCTCAAATATACTTCCCACGACAAGACTGCTCAGGTCGAGAGCAGCTGGCCCCGTAGCCTGCTGGTCA
 ACAGGAGTCGCTCCCTGCCCGAGAACATCGTAGAACCTCCCATGTCTGGCAAGGCCGACCCGCTGCTGTGG
 CCTGAACACCCACAGGCGCTGGGAGATGGGGAAGCCTCCAGCCTCCACTTCTGAGTCTCTCCCCAA
 AGCCAGCTGAATGGAGGCGACGCCCTGTATGTACCCGAGACCTTACCCTGGAGAACAACCAGCGAGTGA
 TCATTATGGAGAAGGGGCCCATCTAGCTCCACCGTGGGGCTGGAGGAAGACAGTGGGAAGGAATCAAG
 TTCCCCAGTGGCTTTGAAGGGACAGGGCCAAGTTTCCAGGCGTCTGCAGAGTACCAGCCCAAAGAACAC
 GGTCCCAGGACTCAGCAGACACAAACAAACAGGGTAGAGTGAGAAACCTGAGGGAGAAGTTCAGGCCT
 TGAACTCTGTGGT

ACGCGTACGCGGCCGCTCGAG – GFP Tag – GTTTAA

Protein Sequence: >MG210324 representing BC031136
 Red=Cloning site Green=Tags(s)

```
MSFESVSSLPEVETDPEPGAEQEAFAALEGPSTEEMPSDPEFPEALETQLHAPKGLLGVDNPAAVVDFVE
PEGSEDLKPLSSEEEEEEMEAAQEPESLLPPSVLDQASVIAERFASSFRRSSLAIEDGKSSGLGTPRL
ISRSSSVLSLESDKGLARWSSIGDSLNPPTPEVIIGADMVTDNGPSVNGTESPSAGSGCPTQDRSSC
KKKESALSTRDRQLLDKIKNYENAEHHDAGFSIRRRESLSYIPKGLVRSSVSRFNSLPKPDSEPAAPVG
YKRPGSSRPASWTLFDLPGPRTDKGDPAITDAEFRPSSEIAKIWERMESSERSPRTGSGQSQANGFELQ
EPLFILEEHGELGAITEESAVASPESASPTQPSPAHLARELKELVKELSSSVQGELVTPHPRIVQLSHV
MDSHVSRVKNKYVQLARQYSLRIKNIKAARPLQWEKVTPDQEEQVPSISGLPEEAGELSGGKARRKPV
LSLLSYEQLVAQEHGTSKSSAAVETSPRRFSFSPSAVSPRTTSPGARSSARSPLSPFDTETFNWPDVREL
CSKYTSHDKTAQVESSWPRSLLVNRSRSLPENIVEPPMSGKADRCCLNTHRRLGDGEASQPPLPESPPQ
SQLNGGDALYVTADLTLENNQRVIIMEKGPHPSSTVGLEEDSGKESSPVALKGQGGFQASAEYQPKHE
GPRDSADTNKQGRVNRNLREKFQALNSVG
```

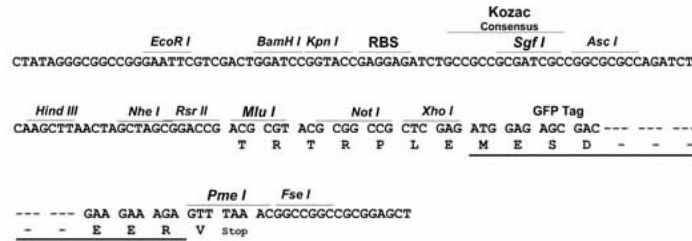
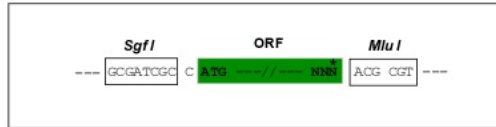
TRTRPLE - GFP Tag - V

Restriction Sites:

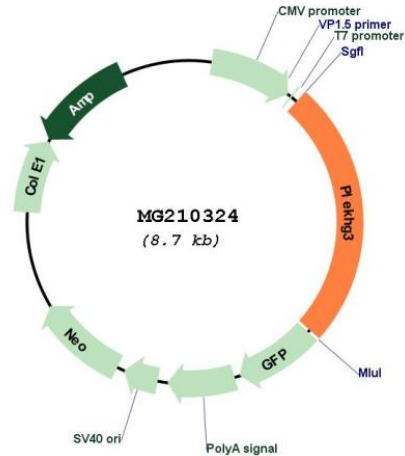
SgfI-MluI

Cloning Scheme:

Cloning sites used for ORF Shutting:



Plasmid Map:



ACCN: BC031136

ORF Size: 2187 bp

OTI Disclaimer: The molecular sequence of this clone aligns with the gene accession number as a point of reference only. However, individual transcript sequences of the same gene can differ through naturally occurring variations (e.g. polymorphisms), each with its own valid existence. This clone is substantially in agreement with the reference, but a complete review of all prevailing variants is recommended prior to use. [More info](#)

OTI Annotation: This clone was engineered to express the complete ORF with an expression tag. Expression varies depending on the nature of the gene.

Components: The ORF clone is ion-exchange column purified and shipped in a 2D barcoded Matrix tube containing 10ug of transfection-ready, dried plasmid DNA (reconstitute with 100 ul of water).

Reconstitution Method:

1. Centrifuge at 5,000xg for 5min.
2. Carefully open the tube and add 100ul of sterile water to dissolve the DNA.
3. Close the tube and incubate for 10 minutes at room temperature.
4. Briefly vortex the tube and then do a quick spin (less than 5000xg) to concentrate the liquid at the bottom.
5. Store the suspended plasmid at -20°C. The DNA is stable for at least one year from date of shipping when stored at -20°C.

RefSeq: [BC031136.1](#)

RefSeq Size: 3001 bp

RefSeq ORF: 2186 bp

Locus ID: 263406

Cytogenetics: 12 C3