

Product datasheet for **MG210315**

Trpv6 (NM_022413) Mouse Tagged ORF Clone

Product data:

Product Type:	Expression Plasmids
Product Name:	Trpv6 (NM_022413) Mouse Tagged ORF Clone
Tag:	TurboGFP
Symbol:	Trpv6
Synonyms:	Cac; CAT; CaT1; Ecac2; Otrpc3
Mammalian Cell Selection:	Neomycin
Vector:	pCMV6-AC-GFP (PS100010)
E. coli Selection:	Ampicillin (100 ug/mL)



[View online »](#)

Protein Sequence: >MG210315 representing NM_022413
 Red=Cloning site Green=Tags(s)

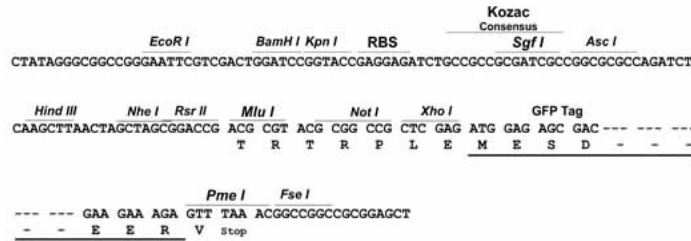
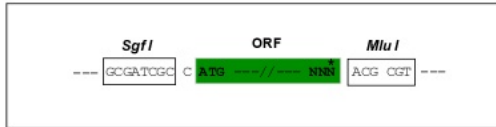
MGWSPKEKGLILCLWNKFCRWFHRQESWAQSRDEQNLLQQKRIWESPLLLAAKENDVQALSKLLKFEGC
 EVHQRGAMGETALHIAALYDNLEAAMVLEAAPELVFEPMTSEL YEGQTALHIAVINQNVNLRALLARG
 ASVSARATGSVFHYRPHNLIYYGEHPLSFAACVGSSEIVRLLIEHGADIRAQDSLGNLTVLHILILQPNKT
 FACQMYNLLLSDYGGDHLKSLLEVPNNQGLTPFKLAGVEGNIIVMFQHLMQKRKHQWYGLTSTLYDLT
 EIDSSGDDQSLELIVTTKKREARQILDQTPVKELVSLKWKRYGRPYFCVLGAIYVLYIICFTMCCVYRP
 LKPRITNRTNPRDNTLMQKLLQEAYVTPKDDLRLVSELVSIIVGAVIILLVEIPDIFRLGVTRFFGQTI
 LGGPFHVIITIAFMVLVTMVMRLTNVDGEVVPMSFALVLGWCNVMYFARGFQMLGPFTIMI QKMIFGDL
 MRFCLWMAVVILGFASAFYIIFQTEDPDELGHFYDYPMALFSTFELFTIIDGPANYDVLDPFMYSVTYAA
 FAIIATLLMLNLLIAMMGDTHWRVAHERDELWRAQVVATTVMLEKLRPLRCLWPRSGICGREYGLGDRWFL
 RVEDRQDLNRQIRRYAQAFQQQDGLYSEDLEKDSGEKLETARPF GAYLSFPTPSVSRSTSRSSTNWERL
 RQGALRKDLRGIINRGLEDGEWEYQI

TRTRPLE - GFP Tag - V

Restriction Sites: SgfI-MluI

Cloning Scheme:

Cloning sites used for ORF Shutting:

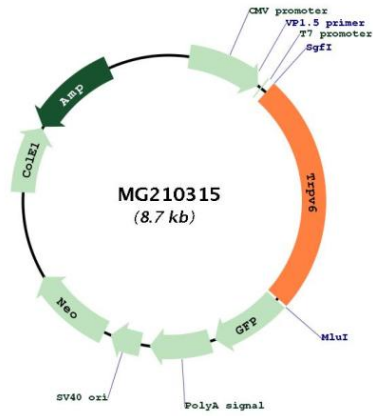


ACCN: NM_022413

ORF Size: 2181 bp

OTI Disclaimer:	<p>Due to the inherent nature of this plasmid, standard methods to replicate additional amounts of DNA in E. coli are highly likely to result in mutations and/or rearrangements. Therefore, OriGene does not guarantee the capability to replicate this plasmid DNA. Additional amounts of DNA can be purchased from OriGene with batch-specific, full-sequence verification at a reduced cost. Please contact our customer care team at custsupport@origene.com or by calling 301.340.3188 option 3 for pricing and delivery.</p> <p>The molecular sequence of this clone aligns with the gene accession number as a point of reference only. However, individual transcript sequences of the same gene can differ through naturally occurring variations (e.g. polymorphisms), each with its own valid existence. This clone is substantially in agreement with the reference, but a complete review of all prevailing variants is recommended prior to use. More info</p>
OTI Annotation:	<p>This clone was engineered to express the complete ORF with an expression tag. Expression varies depending on the nature of the gene.</p>
Components:	<p>The ORF clone is ion-exchange column purified and shipped in a 2D barcoded Matrix tube containing 10ug of transfection-ready, dried plasmid DNA (reconstitute with 100 ul of water).</p>
Reconstitution Method:	<ol style="list-style-type: none">1. Centrifuge at 5,000xg for 5min.2. Carefully open the tube and add 100ul of sterile water to dissolve the DNA.3. Close the tube and incubate for 10 minutes at room temperature.4. Briefly vortex the tube and then do a quick spin (less than 5000xg) to concentrate the liquid at the bottom.5. Store the suspended plasmid at -20°C. The DNA is stable for at least one year from date of shipping when stored at -20°C.
RefSeq:	NM_022413.3
RefSeq Size:	2946 bp
RefSeq ORF:	2304 bp
Locus ID:	64177
UniProt ID:	Q91WD2
Cytogenetics:	6 B2.1
Gene Summary:	<p>Calcium selective cation channel that mediates Ca(2+) uptake in various tissues, including the intestine (PubMed:12765696, PubMed:12601087, PubMed:12574114, PubMed:14736889, PubMed:15123711, PubMed:17129178). Important for normal Ca(2+) ion homeostasis in the body, including bone and skin (PubMed:17129178, PubMed:22878123). The channel is activated by low internal calcium level, probably including intracellular calcium store depletion, and the current exhibits an inward rectification. Inactivation includes both a rapid Ca(2+)-dependent and a slower Ca(2+)-calmodulin-dependent mechanism; the latter may be regulated by phosphorylation (PubMed:15123711). In vitro, is slowly inhibited by Mg(2+) in a voltage-independent manner (PubMed:12601087). Heteromeric assembly with TRPV5 seems to modify channel properties. TRPV5-TRPV6 heteromultimeric concatemers exhibit voltage-dependent gating (PubMed:12574114).[UniProtKB/Swiss-Prot Function]</p>

Product images:



Circular map for MG210315