

## Product datasheet for **MG210311**

### Anapc5 (NM\_001042491) Mouse Tagged ORF Clone

#### Product data:

Product Type:	Expression Plasmids
Product Name:	Anapc5 (NM_001042491) Mouse Tagged ORF Clone
Tag:	TurboGFP
Symbol:	Anapc5
Synonyms:	2510006G12Rik; AA408751; AA536819; AA986414; Anpc5; APC5
Mammalian Cell Selection:	Neomycin
Vector:	pCMV6-AC-GFP (PS100010)
E. coli Selection:	Ampicillin (100 ug/mL)



[View online »](#)

**ORF Nucleotide Sequence:**

>MG210311 representing NM\_001042491  
 Red=Cloning site Blue=ORF Green=Tags(s)

TTTTGTAATACGACTCACTATAGGGCGGCCGGAATTCGTCGACTGGATCCGGTACCGAGGAGATCTGCC  
 GCC**CGGATCGCC**

ATGATGACCAACGGGGTAGTGCACGCCAACTTGTGGTCAAGGACTGGGTGACGCCCTATAAGATCG  
 CCGTCCTGGTGTCTCAACGAGATGGGCCGACGGGCGAGGGCCCGTCAGCCTCGTGGAGCGCGGAA  
 GCTCAACCAGCTGCTCCTGCCCTGCTGCAGGGCCAGATATTACTGTCAAAGCTGTACAAGCTAATT  
 GAAGAATCGTGTCTCAGCTGGCAAATTCAGTGCAGATCAGAATCAAGCTCATGGCTGAAGGCGAACTGA  
 AGGATATGGAACAATTTTTGATGACCTTTAGATTCTTTTTCTGGAAGTGAACCAGAGGTTACAAAAAC  
 GAGTGTAGTAGGCTGTTCTGCGCCACATGATCTTGGCCTACAGTAAGCTTTCTTTAGTCAAGTGT  
 AAGCTGTACTGCTCCAGCAGTACTCCAGAACGGGAGAAAAAGACGGTGAAGATGCTGATATGG  
 ACCGAGAGGATGGAGAGAAACAGATGGAGAAGGAAGAGCTCGACGTGTCGGTGAAGAGGAAGTATC  
 TTGCAGTGGTCTGTCCAAAAACAAGCGGAATTTTTCTCTCTCAGCAGGCCGCTTTGTTGAAGAAT  
 GATGAGACTAAAGCCCTACCCAGCTTCTTGCAGAAGGAATTGAACAACCTGTTGAAGTTAATCCTG  
 ATTTTGTGAAGCTCATTACCTCAGTACTTAAACAACCTCCGTTTCAAGATGTTTTAGCTCAACACA  
 CAGCCTCCTGCATTATTTGACCGCTGATTCTACTGGAGCGGAGGGCAAAAGTAAATGGGGAAGAGGGT  
 TATGGCCGGAGCCTGAGATACGCTGCTCTCAACCTGGCTGCCCTGCACTGCCGCTTCGGTCACTAACA  
 AGGCAGAGCTCGCCCTGCAGGAGGCAATTAGGATTGCCAGGAGTCCAACGATCAGTGTGTCTGCAGCA  
 CTGTTTGAAGTGGCTTTATGTCTGGGGCAGAAGAGAGCCGATAGCTATGTTCTGCTGGAGCACTGTG  
 AAGAAAGCAGTACATTTGGGTTACCGAGAGCTTTTGTGGGAAGACGGCCAACAACTGATGGATGCC  
 TAAAGGACTCTGACCTCCTGCCTGCAACACAGCCTGTCAGAATTATCGATATCAGCATGCACAGAA  
 AACGGCCATCTGGAGGCTGTACGGCCGACACCATGGCACTGCAACAAGCCAGATGTTGCTGAGCATG  
 AACAGCCTGGAGTCGCTGAATGCGGGTGTACAGCAGAACAATACTGAGTCCTTTGCCGTCGCTCTGCC  
 ATCTTGCAGAGCTCCATGCAGAACAGGGCTGTTTTGCGGCTGCTGGTGAAGTATTAAGCACTTGAAGGA  
 CCGATTTCCACCAACAGTCAAGCAGCCAGTTATGGATGCTGTGTGATCAAAAAATACAGTTTACAGCA  
 GCAATGAATGATGGCAAATTCATTTGGCTGATCACTTGTACAGGAATCACAGCGCTTAAATGGCATAG  
 AAGGTGTATACAGGAAAGCAGTCGACTGCAGGCTCAGAACCAATGACAGAGGCACACAAGCTACTGCA  
 GAAGTTGCTGACGACTGTGAGAAGTTAAGAACACAGAATGGTCATCAGCGTCTCCTATCGGTGGCA  
 GAGCTGTACTGGGATCTTCGTCCCGACCATGGCATGCTGTGCTCCTGGAAGCTCTGGCCCTCTCCA  
 AAGAATACCGATTGCAGTACTTGGCCTCCGAACTGTGCTCAACTGGCTTATGCCAGCTCATCCTTGG  
 AATCCCAAGACAGGCCTAACCTTCTCCACATGGCTATCGAGCCATCCTAGCTGACGGGGCTATCCTG  
 GACAAAGGTGCTGCCATGTTCTTAGTGTCCAAGTGCCAAGTGGCTTCGGCAGCGTCTATGACCCAGTGA  
 AGAAAGCGGAAGCTCTGGAAGCGGCCGTTACAGAACCTCAGTGAAGCCAAGAACTACTTTGCAAGTCTGA  
 CTGCAGAGAGCGCATCAGGGATGTTGCTTACTTCCAGGCCAGGCTGTACCACGCTCTTGGCAAGACCCAG  
 GAGAGGAACCATGTGCCATGATCTTCCGGCAGCTGCACCAGGAGTTGCCCGCCATGGGGTGCCTTGA  
 TTAACCACTC

**ACGCGT**ACGCGGCCGCTCGAG - GFP Tag - GTTTAA

Protein Sequence: >MG210311 representing NM\_001042491  
 Red=Cloning site Green=Tags(s)

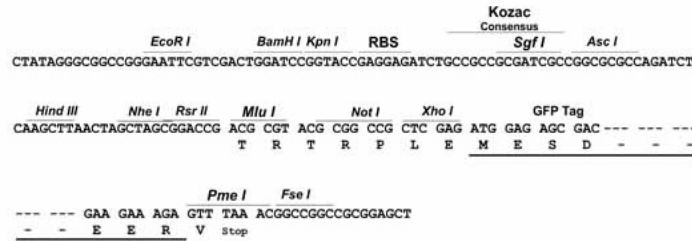
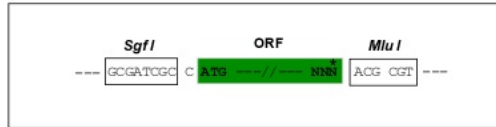
MMTNGVVHANLFGIKDWVTPYKIAVLVLLNEMGRTEGAVSLVERRKLNQLLLPLLQGPDITLSKLYKLI  
 EESCPQLANSVQIRIKLMAEGLKDMEQFFDDLSDSFSGTEPEVHKTSVVGFLFRHMILAYSKLSFSQVF  
 KLYTALQQYFQNGEKKTVEDADMREDGEKQMEKEELDVSVREEEVSCSGPLSQKQAEFFLSQQAALLKN  
 DETKALTPASLQKELNNLLKFNPDFAEAHYLSYLNLRVQDVFSSHSLHLYFDRLILTGAEGKSNGEEG  
 YGRSLRYAALNLAALHCRFGHYQQAELALQEAIRIAQESNDHVCLQHCLSWLYVLGQKRADSYVLEHSV  
 KKAVHFGLPRAFAGKTANKLMDALKDSDLLHWKHSLSLIDISIAQKTAIWRLYGRSTMALQQAQMLLSM  
 NSLESNAGVQQNNTESFAVALCHLAELHAEQGCFAAAGEVLKHLKDRFPNPSQHAQLWMLCDQKIQFDR  
 AMNDGKFHLADSLVTGITALNGIEGVYRKAVVLQAQNQMTEAHKLLQKLLTYCQKLNTEMVISVLLSVA  
 ELYWRSSPTIAMPVLLLEALALSKEYRLQYLASETVLNLAYAQLILGIPEQALTLHMAIEPILADGAIL  
 DKGRAMFLVSKCQVASAASYDPVKKAEALEAAVQNLSEAKNYFAQVDCRERIRDVAYFQARLYHALGKTQ  
 ERNHCAMIFRQLHQELPAHGVPILINHL

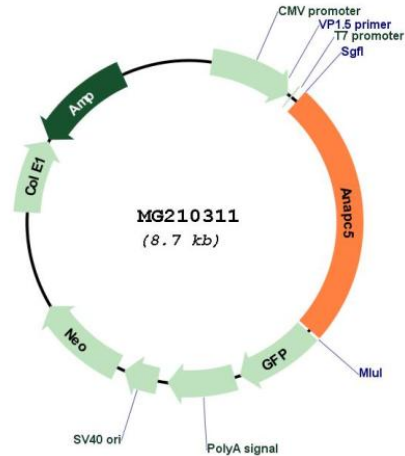
TRTRPLE - GFP Tag - V

Restriction Sites: SgfI-MluI

Cloning Scheme:

Cloning sites used for ORF Shutting:



**Plasmid Map:**


**ACCN:** NM\_001042491

**ORF Size:** 2181 bp

**OTI Disclaimer:** The molecular sequence of this clone aligns with the gene accession number as a point of reference only. However, individual transcript sequences of the same gene can differ through naturally occurring variations (e.g. polymorphisms), each with its own valid existence. This clone is substantially in agreement with the reference, but a complete review of all prevailing variants is recommended prior to use. [More info](#)

**OTI Annotation:** This clone was engineered to express the complete ORF with an expression tag. Expression varies depending on the nature of the gene.

**Components:** The ORF clone is ion-exchange column purified and shipped in a 2D barcoded Matrix tube containing 10ug of transfection-ready, dried plasmid DNA (reconstitute with 100 ul of water).

**Reconstitution Method:**

1. Centrifuge at 5,000xg for 5min.
2. Carefully open the tube and add 100ul of sterile water to dissolve the DNA.
3. Close the tube and incubate for 10 minutes at room temperature.
4. Briefly vortex the tube and then do a quick spin (less than 5000xg) to concentrate the liquid at the bottom.
5. Store the suspended plasmid at -20°C. The DNA is stable for at least one year from date of shipping when stored at -20°C.

**RefSeq:** [NM\\_001042491.1](#), [NP\\_001035956.1](#)

**RefSeq Size:** 2721 bp

**RefSeq ORF:** 2184 bp

**Locus ID:** 59008

UniProt ID: [Q8BTZ4](#)

Cytogenetics: 5 F

**Gene Summary:** Component of the anaphase promoting complex/cyclosome (APC/C), a cell cycle-regulated E3 ubiquitin ligase that controls progression through mitosis and the G1 phase of the cell cycle. The APC/C complex acts by mediating ubiquitination and subsequent degradation of target proteins: it mainly mediates the formation of 'Lys-11'-linked polyubiquitin chains and, to a lower extent, the formation of 'Lys-48'- and 'Lys-63'-linked polyubiquitin chains (By similarity). [UniProtKB/Swiss-Prot Function]