

Product datasheet for **MG210303**

Arhgap17 (BC003259) Mouse Tagged ORF Clone

Product data:

Product Type:	Expression Plasmids
Product Name:	Arhgap17 (BC003259) Mouse Tagged ORF Clone
Tag:	TurboGFP
Symbol:	Arhgap17
Synonyms:	Wbp15, Nadrin, Rich1
Mammalian Cell Selection:	Neomycin
Vector:	pCMV6-AC-GFP (PS100010)
E. coli Selection:	Ampicillin (100 ug/mL)



[View online »](#)

ORF Nucleotide
Sequence:

>MG210303 representing BC003259
Red=Cloning site Blue=ORF Green=Tags(s)

TTTTGTAATACGACTCACTATAGGGCGGCCGGGAATTCGTCGACTGGATCCGGTACCGAGGAGATCTGCC
GCCGCGATCGCC

ATGAAGAAGCAATTCAACCCGATGAAGCAGCTGGCCAATCAGACTGTCCGAGAGCTGAGAAGACCGAAG
TCCTCAGTGAAGATCTGCTACAGATTGAACGTCGCCTGGACACTGTGCGTTCAATGTGCCACCATTCA
TAAGCGTTTGATAGCCTGCTTCCAAGGTCAGCATGGCACTGATGCCGAGAGGAGACATAAAAAGTTCT
CTGACAGCTCTTGCCAGAACATGCAGGAGGCTTCAGCCCAGCTGGAAGAGTCTCTCTTGGGGAAGATGC
TGGAGACCTGTGGGGACGCTGAGAACAGCTGGCTCTTGAACCTCACAACATGAAGTCTTTGTGGAGAA
GGAGATCATGGACCCTCTACGGCATAGCAGAGGTGGAGATTCCAATATCCAGAAGCAAAGGAAGCAG
CTTGCTAGGTTGGTGTGGACTGGGATTAGTCAGAGCGAGATGGAACCAAGCACACAAGTCTTCAGGAA
CCAACCTTCAGGGGCTTCATCCAAAATAGATACCCTAAAGGAAGAGATGGATGAAGCTGGGAATAAAGT
TGAACAGTGCAAGGATCAACTTGCAGCAGACATGTACAACCTCATGGCCAAGAAGGGGAGTATGGCAAG
TTCTTCGTGACGTTATTAGAAGCCCAAGCAGATTACCATAGAAAAGCATTAGCAGTCTTAGAAAAGGCC
TTCCCGAAATGCGCGCCCATCAAGATAAGTGGGCAGAGAAGCCAGCCTTCGGCACACCTCTGGAGGAACA
CCTGAAGAGGAGTGGGCGTGAGATCGCCCTCCCTATTGAGGCCTGTGTCATGTTGTTGCTGGAGACTGGC
ATGAAAGAGGAGGGCCTTTTTCGGATTGGAGCTGGAGCCTCCAAGTTGAAGAAGCTGAAAGCTGCTCTCG
ACTGCTCCACATCGCATCTGGATGAATTCTATTCTGATCCCCATGCTGTGCGCAGGTGCTTTAAAGTCTTA
TCTGCGGGAGTTGCTGAGCCCTTAATGACTTTGACTCTTTATGAAGAATGGACACAAGTTGCAAGTGTG
CAGGATCAAGACAAAAAATCAATATTTATGGACAACATGTGAGAAGTTGCCGCCAAAAATTTTGTTA
ACTTTAGGTATTTAATCAAGTTCCTTGCAAAGCTTGCCAGACCAAGTAAATAAAATGACTCCTGAT
CAACATAGCCATTGTCTGGGCCCTAACCTCCTGTGGGCCAAACAAGAAGGAACGCTGGCTGAAATAGCA
GCTGCCACATCGGTCCACGTGGTTGCGGTGATTGAGCCATCATCCAGCATGCAGATTGGTTCTTCCTG
GAGAGGTAGAATTCAATGTATCAGAAGCATTGTGCCACTTGCTACCCGAATTCTAATCACTCATCCCA
TACTGAAATGACTCTGACTCGGGGACTCTGGAGAGGAAGCGACCTGCCAGCATGGCAGTGTGGAAGGG
GACTTGGTGAAGAAGGAGAGTCTCCAAAACCCAAAGACTCCGTGTGTCAGCTGTCCCTGCAGCAGGAA
GGAACAGCAACCAGATGACCACGGTCCCAAACCCAGGCTCAGACAGGTGGCAACTCCCATCAGCTCTCAGT
AAGCACACCTCACAGTGCAGCCGGTCCCAGCCGCACACTCTGCGTGGGCTGTGAAGAAACCTGCCCCC
GCACCCCCAAACCAGGAAACCTACCTCCTGGCCACCCTGGAGGACAGAGCTCTCCTGGCACAGGCACAT
CCCCAAAGCCAAGCGCCCGAAGCCCATACCGCCTCAGCAGCAGCAACAACAGCAGCAACAACAGCAGCA
GCAGCAGACCCAGGCATGCGCCGCTGCTCCAGCAGCCTGCCTCCCATCCAGGCACCCAGCCACCCACCA
CCACAGCCCCCACACAGCCTCGGTTGGGTGAACAGGGACCAGAGCCAGGCCACGCCACCTCAAACCC
CCACACCACCTAGCACCCACCCCTGGCCAAGCAGAATCCATCGCAAAGTGAACACACAGCTGCACGG
AACCTCCCAAGACCACGGCCAGTGCCCAAGCCCGCAACCGGCTAGCGTGCCACCACCCCCACATCCA
CCTGGCACCCACAGGTGGATGGTGGCCTTACATCCTCAGTGCCACAGCCTCCAGAATCGTCACTGATG
TA

ACGCGTACGCGGCCGCTCGAG - GFP Tag - GTTTAA

Protein Sequence: >MG210303 representing BC003259
 Red=Cloning site Green=Tags(s)

MKKQFNRMKQLANQTVGRAEKTEVLSDLLQIERRLDTVRSMCHSHKRLIACFQGQHGTDERRHKKLP
 LTALAQNMQEASAQLEESLLGKMLETCGDAENQLALELSQHEVFVEKEIMDPLYGIAEVEIPNIQQRKQ
 LARLVLDWDSVRARWNQAHKSSGTFNQGLPSKIDTLKEEMDEAGNKVEQCKDQLAADMYNFMAKEGEYK
 FFVTLLEAQADYHRKALAVLEKALPEMRAHQDKWAEKPAFGTPLEEHLKRSGREIALPIEACVMLLLETG
 MKEEGLFRIGAGASKLKKLKAALDCSTSHLDEFYSDPHAVAGALKSYLRELPEPLMTFSLYEEWTQVASV
 QDQDKKLQYLWTTCCQLPPQNFVNFRLIKFLAKLAQTSVNMKTPSNIATVLPNLLWAKQEGTLAEIA
 AATSVHVVAVIEPIIQHADWFFPGEVEFNVSEAFVPLATPNSNHSSTGNDSDSGTLERKRPASMAVMEG
 DLVKKESPPKPKDSVSAAVPAAGRNSNQMTTVPNQAQTGGNSHQLSVSTPHSAAGSPHTLRRVKKPAP
 APPKPGNLPFGHPGGQSSPGTGTSPKPSARSPSPQQQQQQQQQQQQTPGMRRCSSLPPIQAPSHPP
 PQPPTQRLGEQPEPGTPPTPTPPSTPPLAKQNPSSQSETTLHGTLPRPRPVKPRNRPSVPPPPHP
 PGTHTVDGGLTSSVPTASRIVTDV

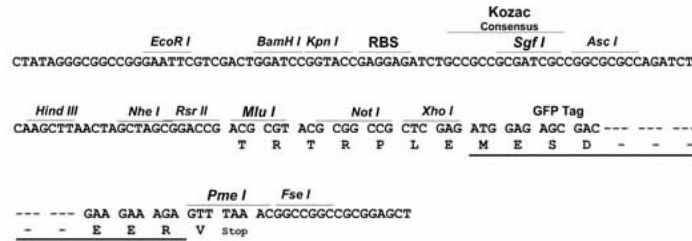
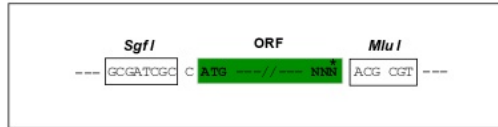
TRTRPLE - GFP Tag - V

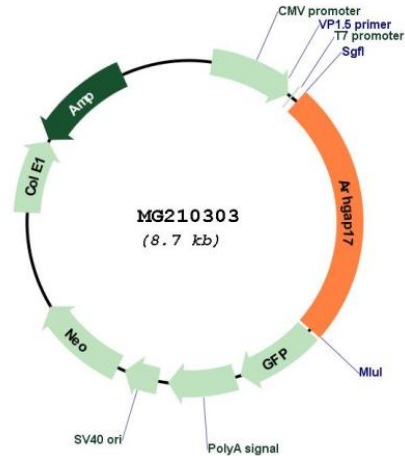
Restriction Sites:

SgfI-MluI

Cloning Scheme:

Cloning sites used for ORF Shuttling:



Plasmid Map:


ACCN: BC003259

ORF Size: 2174 bp

OTI Disclaimer: The molecular sequence of this clone aligns with the gene accession number as a point of reference only. However, individual transcript sequences of the same gene can differ through naturally occurring variations (e.g. polymorphisms), each with its own valid existence. This clone is substantially in agreement with the reference, but a complete review of all prevailing variants is recommended prior to use. [More info](#)

OTI Annotation: This clone was engineered to express the complete ORF with an expression tag. Expression varies depending on the nature of the gene.

Components: The ORF clone is ion-exchange column purified and shipped in a 2D barcoded Matrix tube containing 10ug of transfection-ready, dried plasmid DNA (reconstitute with 100 ul of water).

Reconstitution Method:

1. Centrifuge at 5,000xg for 5min.
2. Carefully open the tube and add 100ul of sterile water to dissolve the DNA.
3. Close the tube and incubate for 10 minutes at room temperature.
4. Briefly vortex the tube and then do a quick spin (less than 5000xg) to concentrate the liquid at the bottom.
5. Store the suspended plasmid at -20°C. The DNA is stable for at least one year from date of shipping when stored at -20°C.

RefSeq: [BC003259](#), [AAH03259](#)

RefSeq Size: 3146 bp

RefSeq ORF: 2174 bp

Locus ID: 70497

Cytogenetics: 7 F3

Gene Summary: Rho GTPase-activating protein involved in the maintenance of tight junction by regulating the activity of CDC42, thereby playing a central role in apical polarity of epithelial cells. Specifically acts as a GTPase activator for the CDC42 GTPase by converting it to an inactive GDP-bound state. The complex formed with AMOT acts by regulating the uptake of polarity proteins at tight junctions, possibly by deciding whether tight junction transmembrane proteins are recycled back to the plasma membrane or sent elsewhere. Participates in the Ca(2+)-dependent regulation of exocytosis, possibly by catalyzing GTPase activity of Rho family proteins and by inducing the reorganization of the cortical actin filaments. Acts as a GTPase activator in vitro for RAC1 (By similarity).[UniProtKB/Swiss-Prot Function]