

Product datasheet for **MG210297**

Hsp90ab1 (NM_008302) Mouse Tagged ORF Clone

Product data:

Product Type:	Expression Plasmids
Product Name:	Hsp90ab1 (NM_008302) Mouse Tagged ORF Clone
Tag:	TurboGFP
Symbol:	Hsp90ab1
Synonyms:	90kDa; AL022974; C81438; Hsp84; Hsp84-1; Hsp90; Hspcb
Mammalian Cell Selection:	Neomycin
Vector:	pCMV6-AC-GFP (PS100010)
E. coli Selection:	Ampicillin (100 ug/mL)



[View online »](#)

ORF Nucleotide Sequence:

>MG210297 representing NM_008302
 Red=Cloning site Blue=ORF Green=Tags(s)

TTTTGTAATACGACTCACTATAGGGCGGCCGGAATTCGTCGACTGGATCCGGTACCGAGGAGATCTGCC
 GCC**CGGATCGCC**

ATGCCTGAGGAAGTGCACCATGGAGAGGAGGAGGTGGAGACCTTTGCCTTCAGGCAGAAATGCCAGC
 TCATGTCCCTCATCATCAACACTTTCTATTCAAACAAGGAGATTTTCTCCGCGAGTTGATCTCTAATGC
 TTCAGATGCCCTGGACAAGATTCGATATGAGAGCCTGACGGACCTTCTAAGTTGGACAGTGGGAAAGAG
 CTGAAAATTGACATCATCCCAACCTCAGGAGCGCACGCTGACTTTGGTGGACACAGGCATTGGCATGA
 CCAAGGCTGACCTCATTAAACCTGGGAACCTTGTAACTGGCACGAAGGCGTTTATGGAGGCTCT
 CCAGGCTGGTGCAGACATCTCCATGATCGGGCAGTTTGGTGTGGATTCTACTCGGCTATCTAGTTGCA
 GAGAAAGTGGTTGTGATCACGAAGCACAATGATGATGAGCAGTATGCCTGGGAGTCGTCTCGGGTGGCT
 CCTTACCCTCCGGCAGACCATGGTGAAGCCATTGGCCGGGTACCAAAGTGATCCTTACCTCAAAGA
 AGACCAGACAGAGTACTTGGAGGAGAGGGTCAAGGAAGTGGTGAAGAAACATTTCGAGTTTATAGGC
 TATCCCATCACCTCTATTTGGAGAAGGAACGGGAGAAGGAGATCAGTGTGATGAGGCAGAGGAAGAGA
 AAGGTGAGAAAGAGGAGGAAGATAAGGAGGATGAGGAGAAGCCTAAGATTGAAGATGTGGATCCGATGA
 GGAAGATGACAGCGGCAAGACAAGAAAAAGAAAAAGAAAGATCAAAGAGAAGTACATTGACCAGGAG
 GAGCTGAACAAGACAAAGCCTATCTGGACCAGAAACCCGGATGACATCACGCAGGAGGAGTATGGCGAAT
 TCTATAAGAGCCTACCAATGACTGGGAGGACCTTGGCAGTCAAGCACTTCTCTGTAGAAGGTGAGTT
 GGAATTCAGGGCATTGCTCTTATTCCCGCGGGCTCCCTTCGACCTTTTGGAGAACAAGAAGAAGAAAG
 AACAACTCAAATTTGATGTCCGCCGTGTGTTTCATCATGGACAGCTGTGACGAGCTGATACCTGAGTACC
 TCAACTTTATCCCGGGTGTGGTTGACTCCGAGGACCTGCCCTGAACATCTCCCGGGAGATGCTCCAGCA
 GAGCAAGATCCTGAAGGTCACTCCGAAGAACATCGTCAAGAAAGTGCCTGGAGCTCTTCTCCGAGCTGGCT
 GAGGACAAGGAGAACTACAAGAAGTTCTATGAGGCCTTCTCAAAAAATTTAAAGCTTGAATTCATGAAG
 ATTCCACTAACCGACGCCGCTCTCTGAGCTCCTTCGCTATCACACCTCTCAGTCTGGAGATGAGATGAC
 CTCCTTGTGAGATATGTGTCTCGCATGAAGGAGACCCAGAAGTCCATCTACTATCACTGGTGGAGAGC
 AAAGAGCAAGTGGCCAACCTGCTTTTGTGGAGCGAGTGCAGGAGCGGGCTTCGAGGTGGTGTATATGA
 CTGAGCCTATTGACGAGTACTGCGTGCAGCAGCTCAAGGAGTTTGTGGGAGAGCCTGGTCTCAGTGAC
 TAAGGAGGGCCTGGAGCTACCAGAGGACGAGGAAGAGAAGAAGAAATGGAGGAGAGCAAGGCAAAGTTT
 GAGAATCTCTGCAAGCTCATGAAGGAGATCTTGGACAAGAAGGTTGAAAAGGTGACAATCTCCAATAGGC
 TTGTGTCTTACCCTGCTGCATTGTGACAAGCACCTATGGCTGGACAGCCAACATGGAACGGATCATGAA
 GGCCAGGCACTGCGAGACAACCTACAATGGGCTACATGATGGCCAAAAAACACCTGGAGATCAACCTT
 GACCACCCATCGTGGAGACCCTGCGGCAGAAGGCTGAGGCAGACAAAAACGACAAAGCTGTCAAGGACC
 TGGTGGTGTGCTGCTTTGAAACTGCTCTGCTCTCCTCTGGTTTCTCACTTGGAGTCCCCAAACCCACTC
 CAACCGCATCTACCGCATGATTAAGTAACTAGGCTGGGCATCGATGAAGATGAGGTCACTGCAGAGGAGCCC
 AGTGCTGCTGTTCTGATGAGATCCCCCTCTGGAAGGCGATGAGGATGCCTCGCGCATGGAAGAGGTGG
 AT

ACGCGTACGCGGCCGCTCGAG - GFP Tag - GTTTAA

Protein Sequence: >MG210297 representing NM_008302
 Red=Cloning site Green=Tags(s)

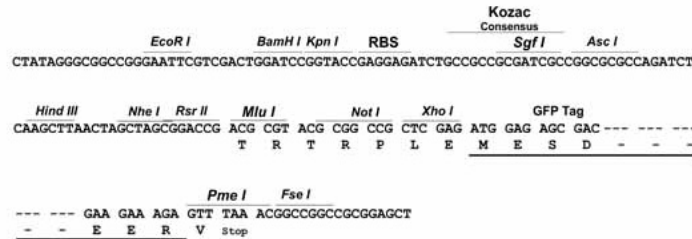
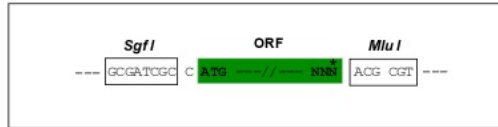
MPEEVHHGEEEVETFAFQAEIAQLMSLIINTFYNSKEIFLRELISNASDALDKIRYESLTDPSKLDGSGKE
 LKIDIIPNPQERTLTLVDTGIGMTKADLINNLTIAKSGTKAFMEALQAGADISMGQFVGVFYSAYLVA
 EKVVVITKHNDDEQYAWESSAGGSFTVRADHGEPVGRGTVILHLKEDQTEYLEERRVKEVVKHSQFIG
 YPITLYLEKEREKEISDDEAEKEEKEEEDKEDEEKPKIEDVGSDEEDDSGKDKKKKTKKIKEKYIDQE
 ELNKTPIWTRNPDDITQEEYGEFYKSLTNDWEDHLAVKHFVSEGQLEFRALLFIPRRAPFDLFENKTKK
 NNKLYVRRVFIIMDSCDELIPEYLNFRGVVDSDELPLNISREMLQQSKILKVKIRKNIIVKCCLELFS
 EDKENYKFFYAFSKNLKLGIEDSTNRRRLSELLRYHTSQSGDEMTSLSEYVSRMKETQKSIYYITGES
 KEQVANSAFVERVRKRGFEVVMTEPIDEYCVQQLKEFDGKSLVSVTKEGLELPEDEEEKKKMEESKAKF
 ENLCKLMKEILDKKVEKVTISNRLVSSPCCIVTSTYGTWANTMERIMKAQALRDNSTMGYMAKKHLEINP
 DHPIVETLRQKAEADKNDKAVKDLVLLFETALLSSGFSLEDPTHSNRIYRMIKLGLGIDEDEVTAEEP
 SAAVPDEIPPLEGDEEDASRMEEVD

TRTRPLE - GFP Tag - V

Restriction Sites: SgfI-MluI

Cloning Scheme:

Cloning sites used for ORF Shutting:



ACCN: NM_008302

ORF Size: 2172 bp

OTI Disclaimer: Due to the inherent nature of this plasmid, standard methods to replicate additional amounts of DNA in E. coli are highly likely to result in mutations and/or rearrangements. Therefore, OriGene does not guarantee the capability to replicate this plasmid DNA. Additional amounts of DNA can be purchased from OriGene with batch-specific, full-sequence verification at a reduced cost. Please contact our customer care team at custsupport@origene.com or by calling 301.340.3188 option 3 for pricing and delivery.

The molecular sequence of this clone aligns with the gene accession number as a point of reference only. However, individual transcript sequences of the same gene can differ through naturally occurring variations (e.g. polymorphisms), each with its own valid existence. This clone is substantially in agreement with the reference, but a complete review of all prevailing variants is recommended prior to use. [More info](#)

OTI Annotation: This clone was engineered to express the complete ORF with an expression tag. Expression varies depending on the nature of the gene.

Components: The ORF clone is ion-exchange column purified and shipped in a 2D barcoded Matrix tube containing 10ug of transfection-ready, dried plasmid DNA (reconstitute with 100 ul of water).

Reconstitution Method:

1. Centrifuge at 5,000xg for 5min.
2. Carefully open the tube and add 100ul of sterile water to dissolve the DNA.
3. Close the tube and incubate for 10 minutes at room temperature.
4. Briefly vortex the tube and then do a quick spin (less than 5000xg) to concentrate the liquid at the bottom.
5. Store the suspended plasmid at -20°C. The DNA is stable for at least one year from date of shipping when stored at -20°C.

RefSeq: [NM_008302.3](#), [NP_032328.2](#)

RefSeq Size: 2507 bp

RefSeq ORF: 2175 bp

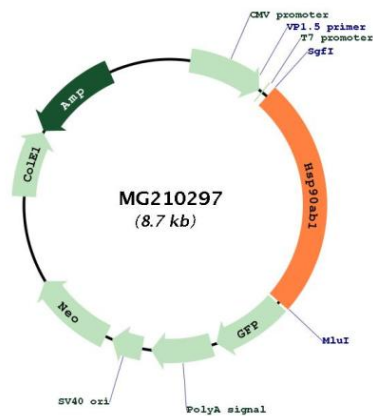
Locus ID: 15516

UniProt ID: [P11499](#)

Cytogenetics: 17 22.59 cM

Gene Summary:

Molecular chaperone that promotes the maturation, structural maintenance and proper regulation of specific target proteins involved for instance in cell cycle control and signal transduction. Undergoes a functional cycle that is linked to its ATPase activity. This cycle probably induces conformational changes in the client proteins, thereby causing their activation. Interacts dynamically with various co-chaperones that modulate its substrate recognition, ATPase cycle and chaperone function. Engages with a range of client protein classes via its interaction with various co-chaperone proteins or complexes, that act as adapters, simultaneously able to interact with the specific client and the central chaperone itself. Recruitment of ATP and co-chaperone followed by client protein forms a functional chaperone. After the completion of the chaperoning process, properly folded client protein and co-chaperone leave HSP90 in an ADP-bound partially open conformation and finally, ADP is released from HSP90 which acquires an open conformation for the next cycle. Apart from its chaperone activity, it also plays a role in the regulation of the transcription machinery. HSP90 and its co-chaperones modulate transcription at least at three different levels. In the first place, they alter the steady-state levels of certain transcription factors in response to various physiological cues. Second, they modulate the activity of certain epigenetic modifiers, such as histone deacetylases or DNA methyl transferases, and thereby respond to the change in the environment. Third, they participate in the eviction of histones from the promoter region of certain genes and thereby turn on gene expression. Antagonizes STUB1-mediated inhibition of TGF-beta signaling via inhibition of STUB1-mediated SMAD3 ubiquitination and degradation. Promotes cell differentiation by chaperoning BIRC2 and thereby protecting from auto-ubiquitination and degradation by the proteasomal machinery. Main chaperone that is involved in the phosphorylation/activation of the STAT1 by chaperoning both JAK2 and PRKCE under heat shock and in turn, activates its own transcription.[UniProtKB/Swiss-Prot Function]

Product images:


Circular map for MG210297