

Product datasheet for **MG210292**

Ncaph (NM_144818) Mouse Tagged ORF Clone

Product data:

| | |
|---------------------------|--|
| Product Type: | Expression Plasmids |
| Product Name: | Ncaph (NM_144818) Mouse Tagged ORF Clone |
| Tag: | TurboGFP |
| Symbol: | Ncaph |
| Synonyms: | A730011O11Rik; Brnn1; HCAP-H; mKIAA0074 |
| Mammalian Cell Selection: | Neomycin |
| Vector: | pCMV6-AC-GFP (PS100010) |
| E. coli Selection: | Ampicillin (100 ug/mL) |



[View online »](#)

ORF Nucleotide
Sequence:

>MG210292 representing NM_144818
Red=Cloning site Blue=ORF Green=Tags(s)

TTTTGTAATACGACTCACTATAGGGCGGCCGGGAATTCGTCGACTGGATCCGGTACCGAGGAGATCTGCC
GCCGCGATCGCC

ATGAATAGCTCTTTTCTGAAGGCCCGAGGACAACAGGATGTTCTTCTCACCTTTGGAACGGGTGCCCC
CAGCATCCCGGCCCGGAAGGCTCCACTTGGCACTCCTAAAACCCAGTCTCGAAGACTTTCCTCAGAA
TGACGATGAAAAGGAGCGGATGCAGCGGAGACGCTCCAGGGTCTTTGACCTGCAGTTCAGTACAGATTCCG
ATTCATCTGGCCTCCCCTAACAGGAATATTGATGTTTCACTACCATATCTAAGTTTACAAAACACACAGA
TTACAGAACATTACTCTACCTGTATCAAGCTTTCTTCTGAAAAATAAAATCACTACTAAGAATGCTTTCGG
CTTGCAATTTGATTGATTCATGTCAGAGATTCTGAAGCAGAAAGATGCAGAACCAACCAACTTTAAAGTG
GCTGCTGGCACCTTGGATGCCAGCACCAAGATCTATGCTGTCCGTGTGGATGCCGTCCATGCTGATGAT
ACAGAGTCTTGGGGGGCTGGGCAAAGACACACCCTCAAGGAGAGGAGAGCCACAGTGGAGATGGAAG
TACCCTTGAAACAGAAAGGACTAAAAACCTGCAAAGCCAAAGAAGAAGCAGTCTGCAAACCAATTGAA
CAGAATCTCAGCAATATCAATGTCTCGGAAGCCGATGGGAAGTGTGCGGTGGATCCTATGTTTCAGAAGA
CAGCAGCCTCCTTTGATGAATGCAGCAGCACTGGGGTATTTCTCTCCACGCTGCACTGCCAGGACTACAG
AAGCGAGCTGCTTTTCCCTTCCGACATGCAGACCTCTCCTCAGGAGAGCCCTCGAGCTGCCGGATCTG
GGTTTCGTAGACATGACAGATTTAGAAGCTTCTTGCAGCAGTGTGTGGAAGACCGCCCGCTCTGCCCAT
CCCTGGCCGGGTTCCAGTTTACTAAATGGGACAGCGAAACACATAATGAGTCTGTGTGCGCCCTGGTGGA
CAAGTTTAAGAAGAATGATCAAGTATTTGACATCAATGCTGAGGCTGAAGACGATGAAGAGGATGTCCT
GATGGGCCCTGGTGGAGGATTTTGTGACAATGATGAGCCAGACCTTTCTGCAGCTGGGACCATGAAG
AGTTCGGAGCTGGAAGGAGCTCTGTCAGTCCAGAGCAACCAGGAAGAAGTTATTTCCCTCGAGGACAG
AGACATCCAAGTCATGTGCTCCTTTTTATCCATGAAACCTGGGGAATATTCCTATTTTCAGTCCCCGGACC
ATGAAGATGTGGCTGGCCAGATCACTGGCGCTTCAGGCCTCGACCCAAGCAAGATGCTACCTCCTGCA
CAGAGCACAAAAAGAAGAGTGCAAAGAAAGACTTTGAAATTAATTTTGTGATGATATTGATTTTGTGATGC
ATATTTTCAGAAAACAAAGGCTGCTACCATTCTGACCAAGTCCACTTTGGAGAACCAGAATTGAAAAGCC
ACCACTCTCCACAGATTTCCACTATGAAACTGATAATCTGATCCAGCTTCACCTCAAACCAGGCAAAA
GGTCACCTAAGATGGACCAGGACCAGAAGGCTAAGACTGAGCACTATGAGGAAATGAAGACTATGATTA
CAACAACCCTAACGACACCTCCAATATTGCTGGACTTCAGGCTGCTGACAGTGATTATGAAGAGGCA
GACGATTTATTTGCGGATCCAGTCGGGACCTTGACCTTGAGTCTGATCCAAAGACAACACAAGAGAATG
GTCACATTTCTCCTGAAAACCAAGGAGTAGATATCACAACCTACCAAGAGTTGAACCTGGTGGCTGAGCC
TCAAAAGGTGAATAAAATAGAAATTCATTACGCCAAGACTGCCAAAAAGATGGACATGAAGAAGCTGAAG
CAGAGTATGTGGAGTCTGCTGACGAAGTTTTCTAGGAAGGAGGCTGACACAGAGGCAAACCACTGAAA
GTGGACAGGAAGGTGCCCCGAGGAAGTGGCTGATGAGAAGAACTCAGTGGGCTCACAAGGACCTGCA
GACAAGGCTGCCCCGCTCATGGCTCAGAACCTCTCCATACCCCTGGCTTTTGCCTGTCTTCTGCACTTA
GCAAATGAAAAGAATCTGAAGCTAGAAGGCACAGAGGATCTTTCTGATGTTCTGGTATGCAAGGGGAC

ACGCGTACGCGGCCGCTCGAG - GFP Tag - GTTTAA

Protein Sequence: >MG210292 representing NM_144818
 Red=Cloning site Green=Tags(s)

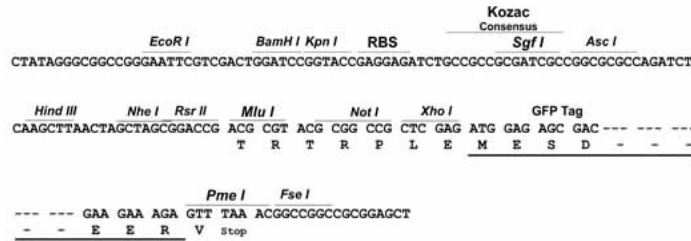
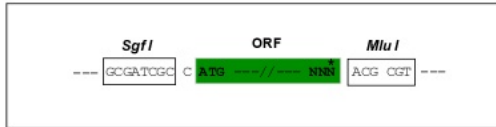
MNSSFLKARGQQDVLSSPLERVPPASRPGKAPLGPVLEDFPQNDDEKERMQRRRSRVFDLQFSTDS
 IHLASPNRNIDVSTTISKFTNTQITEHYSTCIKLSSSENKITTNAFLHLIDFMSEILKQKDAEPTNFKV
 AAGTLDASTKIYAVRVDVAHVADVYRVLGGLGKDTPPQGEESHSGDGLTETERTKKPAKPKKKQCKTIE
 QNL SNINVSEADGKCAVDPMFQKTAASFDECS TTGVFLSTLHCQDYRSELLFPSDMQTLSSGEPLLPDL
 GFVDMTDLEASLQQCVEDRPLCPSLAGFQFTKW DSETHNESVSALVDFKFKNDQVFDINAEADDEEDVP
 DGPLVEDFVDNDEPDL SAAGDHEEFRSWKELCQVQSNQEEVISLEDRDIQVMCSFSLSMKPGEYSYFSPRT
 MKMWAGPDHWRFRPRPKQDATSCTEHKKKSAKKDFEINFDDIDFDAYFQKTKAATILTKSTLENQNWKA
 TTLPTDFHYETDNL IQLHLKPGKRSLKMDQDQAKTEHYEEIEDYDNNPNDTSNYCPGLQAADSDYEEA
 DDLFADPVGTLDESDPKTTQENGHISPENQGV DITTYQELNLVAEPQKVNKIEIHYAKTAKKMDMKLLK
 QSMWSLLTKFSRKEADTEANHTESGQEGAPEEVADEKKLSGLTKDLQTRLPLMAQNLSIPLAFACLLHL
 ANEKNLKEGTEDLSDVLMQGD

TRTRPLE - GFP Tag - V

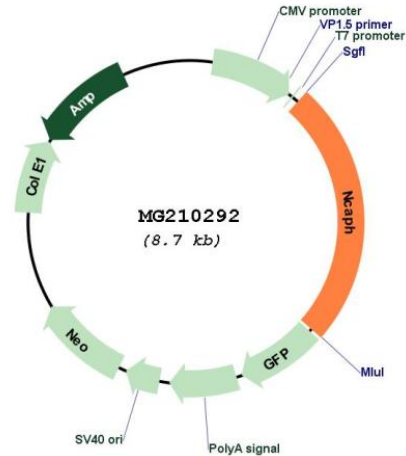
Restriction Sites: SgfI-MluI

Cloning Scheme:

Cloning sites used for ORF Shutting:



Plasmid Map:



ACCN: NM_144818

ORF Size: 2169 bp

OTI Disclaimer: The molecular sequence of this clone aligns with the gene accession number as a point of reference only. However, individual transcript sequences of the same gene can differ through naturally occurring variations (e.g. polymorphisms), each with its own valid existence. This clone is substantially in agreement with the reference, but a complete review of all prevailing variants is recommended prior to use. [More info](#)

OTI Annotation: This clone was engineered to express the complete ORF with an expression tag. Expression varies depending on the nature of the gene.

Components: The ORF clone is ion-exchange column purified and shipped in a 2D barcoded Matrix tube containing 10ug of transfection-ready, dried plasmid DNA (reconstitute with 100 ul of water).

Reconstitution Method:

1. Centrifuge at 5,000xg for 5min.
2. Carefully open the tube and add 100ul of sterile water to dissolve the DNA.
3. Close the tube and incubate for 10 minutes at room temperature.
4. Briefly vortex the tube and then do a quick spin (less than 5000xg) to concentrate the liquid at the bottom.
5. Store the suspended plasmid at -20°C. The DNA is stable for at least one year from date of shipping when stored at -20°C.

RefSeq: [NM_144818.2](#)

RefSeq Size: 2663 bp

RefSeq ORF: 2196 bp

Locus ID: 215387

UniProt ID: [Q8C156](#)

Cytogenetics: 2 F1

Gene Summary: Regulatory subunit of the condensin complex, a complex required for conversion of interphase chromatin into mitotic-like condense chromosomes. The condensin complex probably introduces positive supercoils into relaxed DNA in the presence of type I topoisomerases and converts nicked DNA into positive knotted forms in the presence of type II topoisomerases. Early in neurogenesis, may play an essential role to ensure accurate mitotic chromosome condensation in neuron stem cells, ultimately affecting neuron pool and cortex size.[UniProtKB/Swiss-Prot Function]