

Product datasheet for **MG210285**

HIcs (NM_139145) Mouse Tagged ORF Clone

Product data:

Product Type:	Expression Plasmids
Product Name:	HIcs (NM_139145) Mouse Tagged ORF Clone
Tag:	TurboGFP
Symbol:	HIcs
Synonyms:	410I21.SP6; D16Jhu34
Mammalian Cell Selection:	Neomycin
Vector:	pCMV6-AC-GFP (PS100010)
E. coli Selection:	Ampicillin (100 ug/mL)



[View online »](#)

ORF Nucleotide Sequence:

>MG210285 representing NM_139145
Red=Cloning site Blue=ORF Green=Tags(s)

TTTTGTAATACGACTCACTATAGGGCGGCCGGAATTCGTCGACTGGATCCGGTACCGAGGAGATCTGCC
GCC**CGATCGC**

ATGGAGGACAGGCTCCAGATGGACAACGGCCTGATAGCCAGAAGATCGTTTCAGTCCACTTAAAGGACC
CTGCTCTGAAGGAACTCGGCAAAGCCTCCGACAAGCAAGTGCAGGGCCGCCCGGGGCCAGAAAGCTTC
CCCCGAGGCCAGCCTGCACAAGGTGTCATGGAGCATGCTGGCCAAGGTATTGCAAGGCCGCGGTGAA
GGCCCTTCCCCACGGAGGAGGGGCTGTGCCCTGAAAGTGAGCCTGCTGCAGATGGGACCCAGGGCTGA
GCTCCCGGAGCTCTGTGAGCTCCACCTGTCCATCTGTACAGAGTGTCTGGAGCTCGAGAACAGTACCAT
TGACTCGGTGAGGTCTGCGTCTGCGGAGAACATTCCAGACCTTCCTGTGATCACAGCGCGTGGAGGGT
GCTGCGGGCGAACTCTGCCCCGAACGGAAGGGAAGAGAGTCAACATTTCCGGAAAGGCCCAATATCT
TGCTGTATGTGGCTCTGGTCCGAGGAAGCCCTGGGCGGCTCCAGCAGGTGCGATCTGTCTGACTGA
CTGTGTGGACACGACAGCTACACTCTCTACCACCTGCTGGAAGACAGCGCTCTGAGGGACCCGTGGTCT
GACAACTGCCTCCTGCTAGTTATTGCCAGCAGGGACCCCATCCCCAAAGACATACAGCACAGTTTATGG
CCTATCTTTCTCAGGGAGGGAAGGTGCTGGGCCTGTCTCCCCCTTACGTTGGGTGGCTTTCGGGTGAC
CAGGAGAGATGTGCTACGGAACACAGTCCAGAACTTGGTTTTCTAAGGCTGATGGGACTGAGGTACGG
CTCAGTGTCTGAGCAGCGGCTACGTTTATGAAGAAGGCCGAGCTTGGGAGGCTCCAGGGCCACCTGG
AGAATGAGGACAAGGATAAAATGATTGTGACGTGCCTTTTGAACCCCTCGGAGGGGAAGCCGTTCTCTG
CCAGGTGCACCTGGAGCTCCGCCCCGGCGCCTCCCTGGTGCACTGCAGACGACTTTAACGTGCTCAAA
TCCAGCAATGTGAGAAGACAGAGGTCTTAAGGAGATCCTGACTGCCCTCGGTCTGAGCTGTGACGCAC
CACAGTTCTGCTTAACGCCCTGTACTTACTGCTGGCCGCTGAGGAAACCCAGGATCCGTTTCATGCA
GTGGCTCGGGAGGCACACAGATCCTGAAGGAATCATAAAATCCAGCAAGCTCTCCCTTCAGTTTGTTC
TCTACACATCTGAAGCGGAGATCACCCGTCTTCCATGCCTGTGGTCACTGACCCAGAAGCCTTTTCAT
CAGAGCACTTCAGCCTAGAGACCTATCGACAGAATCTGCAGACCACGCGCCTTGGGAAAGTGATTCTGTT
TGCAGAAGTGACCTCCACCACCATGAGTCTCCTGGATGGGTTGATGTTTGAGATGCCGAGGAAATGGGC
TTAATTGCCATTGCAGTTCGGCAGACCCAGGGCAAAGGAAGGGGCCGAATGCCTGGCTGAGCCCCGTGG
GATGTGCTCTTCCACTCTGCTGGTCTTCATCCCCCTGAGGTCACAACTGGGACAGAGGATTCCATTTGT
CCAGCATTTGATGTCCTTGGCTGTGGTGGAGGCAGTGGGTCTATCCAGGTATGAGGATATCACTTG
CGAGTGAAGTGGCCCAACGATATTTATTACAGCGATCTCATGAAGATCGGTGGGTTCTGGTTAATTCAA
CACTTATGGGAGAAACATTTTATATCCTCATCGGCTGTGGATTCAATGTGACGAACAGTAATCCTACCAT
TTGTATCAACGACCTCATCGAAGAACACAATAAGCAGCACGGGGCGGGCCTGAAGCCCCTGCGAGCGGAC
TGTCTCATAGCCAGAGCCGTGACCGTGTGGAGAACTGATCGACAGTTTCAGGACCAAGGGCCCGACG
GCGTTCTTCCCCTCTATTATAAATACTGGGTGCACGGTGGTCAGCAAGTCCGCCTGGGCAGCACGGAGGG
GCCACAGGCATCTATTGTGGCCTTGATGACTCCGGGTTCTGCAGGTCCACCAAGAGGATGGTGGGGTT
GTGACGGTGCATCCAGATGGCAACTCCTTCGACATGCTGAGAAACCTCATCGTGCCCAAGCGACAG

ACGCGTACGCGGCCGCTCGAG – GFP Tag – GTTTAA

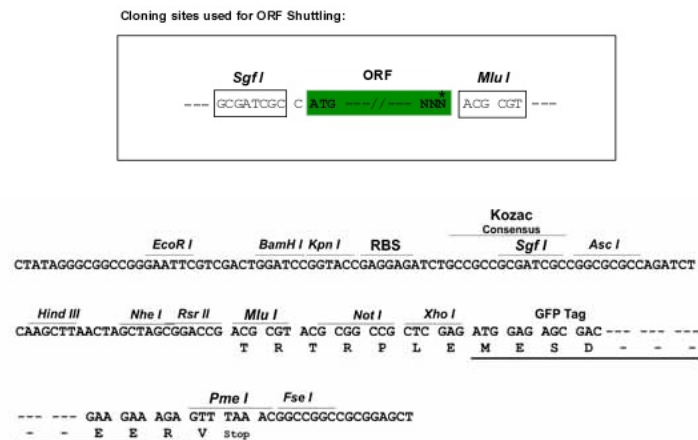
Protein Sequence: >MG210285 representing NM_139145
Red=Cloning site Green=Tags(s)

MEDRLQMDNGLIAQKIVSVHLKDPALKELGKASDKQVQGPPEASPEAQAQGVMEHAGQGDCKAAGE
GPSRRRGCAPESEPAADGDPGLSSPELCQLHLSCHECLELENSTIDSVRSASAENIPDLPCDHSGVEG
AAGELCPERKGRVNIISGKAPNILLYVSGSSEALGRLQQVRSVLTDCVDTDSYTLYHLLSDSALRDPWS
DNCLLLVIASRDPIPKDIOHKFMAYLSQGGKVLGLSSPFTLGGFRVTRRDVLRNTVQNLVFSKADGTEVR
LSVLSSGYVYEEGPSLGRQLQGHLENEKDCKMIVHVPFGLGGEAVLCQVHLELPPGASLVQTADDFNVLK
SSNVRREVLKEILTALGLSCDAPQVPALTPLYLLAAEETQDPFMQWLGRHTDPEGIIKSSKLSLQFVS
SYTSEAEITPSSMPVVDPEAFSSEHFSLETYRQNLQTTRLGKVLFAEVTSTTMSLLDGLMFEMPQEMG
LIAIAVRQTQKGGRGNLSPVGCALSTLLVFIPRLSQLGQRIPFVQHLMSLAVVEAVRSIPGYEDINL
RVKWPNDIYYSDLMKIGGVLVNSTLMGETFYILIGCGFNVTSNPTICINDLIEEHNKQHAGLKLPRAD
CLIAVAVTVLEKLIDRFQDQGPDGVLPLYKYVWHGGQVRLGSTEGPQASIVGLDDSGFLQVHQEDGGV
VTVHPDGNFDMRLNLIVPKRQ

TRTRPLE – GFP Tag – V

Restriction Sites: SgfI-MluI

Cloning Scheme:



ACCN: NM_139145

ORF Size: 2169 bp

OTI Disclaimer: The molecular sequence of this clone aligns with the gene accession number as a point of reference only. However, individual transcript sequences of the same gene can differ through naturally occurring variations (e.g. polymorphisms), each with its own valid existence. This clone is substantially in agreement with the reference, but a complete review of all prevailing variants is recommended prior to use. [More info](#)

OTI Annotation: This clone was engineered to express the complete ORF with an expression tag. Expression varies depending on the nature of the gene.

Components: The ORF clone is ion-exchange column purified and shipped in a 2D barcoded Matrix tube containing 10ug of transfection-ready, dried plasmid DNA (reconstitute with 100 ul of water).

Reconstitution Method:

1. Centrifuge at 5,000xg for 5min.
2. Carefully open the tube and add 100ul of sterile water to dissolve the DNA.
3. Close the tube and incubate for 10 minutes at room temperature.
4. Briefly vortex the tube and then do a quick spin (less than 5000xg) to concentrate the liquid at the bottom.
5. Store the suspended plasmid at -20°C. The DNA is stable for at least one year from date of shipping when stored at -20°C.

RefSeq: [NM_139145.5](#)

RefSeq Size: 4833 bp

RefSeq ORF: 2169 bp

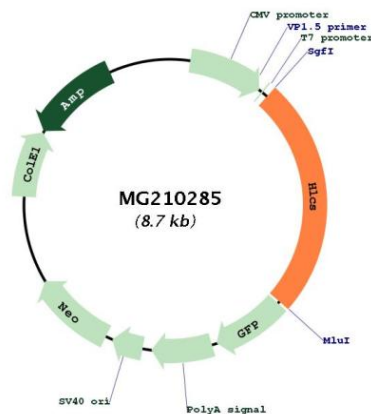
Locus ID: 110948

UniProt ID: [Q920N2](#)

Cytogenetics: 16 55.12 cM

Gene Summary: Post-translational modification of specific protein by attachment of biotin. Acts on various carboxylases such as acetyl-CoA-carboxylase, pyruvate carboxylase, propionyl CoA carboxylase, and 3-methylcrotonyl CoA carboxylase (By similarity).[UniProtKB/Swiss-Prot Function]

Product images:



Circular map for MG210285