

Product datasheet for **MG210281**

Gne (NM_015828) Mouse Tagged ORF Clone

Product data:

Product Type:	Expression Plasmids
Product Name:	Gne (NM_015828) Mouse Tagged ORF Clone
Tag:	TurboGFP
Symbol:	Gne
Synonyms:	2310066H07Rik; DMRV; GLCNE; IBM2; NM; Uae1
Mammalian Cell Selection:	Neomycin
Vector:	pCMV6-AC-GFP (PS100010)
E. coli Selection:	Ampicillin (100 ug/mL)



[View online »](#)

**ORF Nucleotide
Sequence:**

>MG210281 representing NM_015828
 Red=Cloning site Blue=ORF Green=Tags(s)

TTTTGTAATACGACTCACTATAGGGCGGCCGGGAATTCGTCGACTGGATCCGGTACCGAGGAGATCTGCC
 GCC**CGGATCGCC**

ATGGAGAAGAACGGGAACAACCGAAAGCTCCGGTTTGCCTTGCACCTGCAACCGAGCTGACTACTCCA
 AACTGGCCCCGATCATGTTTCGGCATCAAGACAGAGCCCGGTTCTTTGAGTTGGACGTGGTGGTCTCGG
 CTTCCACCTGATTGACGACTATGAAAACACATACCGCATGATTGAGCAAGATGACTTTGACATTAACACC
 AGGCTCCACACGATTGTTAGAGGGGAAGATGAAGCGGCCATGGTAGAGTCGGTAGGCCTAGCGCTCGTGA
 AGCTACCGGACGTCCTCAATCGCCTGAAGCCGACATCATGATTGTTACCGGAGACCGATTTGACGCCCT
 TGCTCTGGCTACGCTCTGCTGCCTTGATGAACATCCGCATCCTTACATTGAAGGAGGCGAGGTGACGCGG
 ACCATTGATGACTCTATCAGACACGCCATAACAAAAGTGGCTCACTACCATGTGTGCTGCACTAGAAGTG
 CAGAGCAGCACCTGATCTCTATGTGCGAGGACCACGACCGCATCCTGTTGGCAGGCTGCCCTTCTATGA
 CAAACTGCTCTCCGCAAGAACAAGACTATATGAGCATCATTCCGGATGTGGCTAGGCGATGATGAAAA
 TGTAAGGATTACATCGTTGCCCTGCAGCATCCCGTGACCACTGACATTAAGCATTCCATAAAGATGTTTG
 AGCTAACACTGGATGCCCTGATCTCGTTTAAACAAGAGGACCCTAGTTCTGTTTCCAAATATCGATGCAGG
 CAGCAAGGAGATGGTTCGAGTGATGCGGAAGAAGGGCATCGAGCATCACCCCAATTTCCGTGCAGTCAAG
 CACGTCCCGTTTGACCAGTTCATACAGCTGGTCCGCCACGCTGGCTGCATGATTGGGAATAGCAGCTGCG
 GCGTGCGAGAGGTTGGCGCTTTCGGAACACCCGTGATCAACCTGGGCACAAGGCAGATAGGAAGAGAAAAC
 CGGGGAGAATGTTCTTATGTGAGGGATGCTGACACCAAGATAAAAATTTGCAAGCACTACACCTCCAG
 TTCGGCAAACAGTACCCTTGCTCAAAGATATATGGGGATGGGAATGCTGTTCCAAGGATTTTAAAGTTTC
 TCAAATCCATTGACCTTCAAGAGCCACTACAGAAGAAATTCGTCTCCCCCTGTAAAGGAGAACATCTC
 TCAAGACATTGACCACATCCTGGAAACTCTGAGTGCCTTGGCTGTTGATCTTGGCGGACAAACCTGAGG
 GTGGCAATAGTTAGCATGAAGGGTGAATCGTTAAGAAGTACACTCAGTTCAACCCTAAAACCTATGAAG
 AAAGGATTAGTTAATCCTGCAGATGTGTGGAAGCTGCCGCGGAAGCTGTGAAACTCAATTGCAGAAT
 TCTGGGAGTAGGCATCTCCACAGGTGGCCGCGTGAATCCCAGGAAGGAGTTGTGCTGCATTCAACCAAG
 CTGATCCAGGAATGAACTCCGTGGACCTCAGGACACCCCTCTCCGACACCCTGCATCTCCCCGTGTGGG
 TGGACAATGACGGCAACTGTGCCCCATGGCAGAGAGGAAGTTCGGCCAAGGAAAAGGACAGGAGAACTT
 CGTGACGCTCATACGGGACAGGGATCGGTGGGGGATCATCCACCAGCAGAACTGATCCACGGCAGC
 TCCTTCTGCGCGCGGAGCTCGGCCATCTCGTGGTGTCCCTGGACGGTCTGACTGCTCCTGTGGAAGCC
 ATGGGTGCATCGAAGCGTACGCCTCTGGAATGGCCTTGCAGAGGGAAGCAAGAAACTCCATGATGAGGA
 CCTGCTCTTGGTGAAGGGATGTCAGTACCAAAAAGACGAAGCTGTGGGTGCCCTCCATCTCATCCAGGCT
 GCCAAGCTGGGCAACGTGAAGGCCAGAGCATCTTACGAACAGCTGGAAGTCTTTGGGACTTGGGGTTG
 TGAACATCCTCCACACTATGAATCCTTCCCTGGTATCCTGTCTGGAGTCTGGCCAGTCACTACATCCA
 CATCGTGAAGGACGTATCCGCCAGCAAGCCTTGTCTCCGTGCAGGATGTGGACGTGGTGGTCTCAGAC
 TTGGTGGACCCGGCCCTGCTTGGCGCAGCCAGCATGGTTCTGGACTACACAACCGCGCAGGATCCAC

ACGCGTACGCGGCCGCTCGAG – GFP Tag – GTTTAA

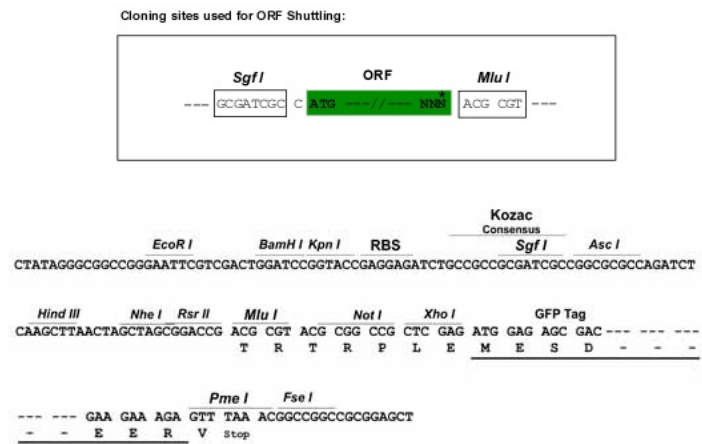
Protein Sequence: >MG210281 representing NM_015828
 Red=Cloning site Green=Tags(s)

```
MEKNGNNRKL RVCVATCN RADYSKLAPIMFGIKTEPAFFELDVVVLGSHLIDDYGNTYRMIEQDDFDINT
RLHTIVRGEDEAAMVESVGLALVKLPDVLNRLKPDIMIVHGDRFDALALATSAALMNIRILHIEGGEVSG
TIDDSIRHAITKLAHYHVCCTRSAEQHLISMCEHDHRIILAGCPSYDKLLSAKNKDYMSIIRMWLGDDVK
CKDYIVALQHPVTTDIKHSIKMFELTDALISFNKRTLVLFPNIDAGSKEMVRVMRKKGIEHHPNFRAVK
HVPFDQFIQLVAHAGCMIGNSSCGVREVGAFGTPVINLGRQIGRETGENVLHVRDADTQDKILQALHLQ
FGKQYPCSKIYGDGNAVPRILKFLKSIDLQEPLQKFCFPVKENISQDIDHILETLSALAVDLGGTNLR
VAIVSMKGEIVKKYTQFNPKTYEERISLILQMCVEAAAEAVKLNCRILGVGISTGGRVNPQEGVVLHSTK
LIQEWNSVDLRTPLSDTLHLPVWVDNDGNCAAMAERKFGQGKQENFVTLITGTGIGGGIIHQHELIHGS
SFCAAELGHLVVSLDGPDCSCGSHGCIEAYASGMALQREAKKLHDEDLLLVEGMSVPKDEAVGALHLIQA
AKLGNVKAQSILRTAGTALGLGVNINLHTMNPSLVILSGVLASHYIHIVKDVIHQALSSVDVDDVVSD
LVDPALLGAASMVLDTYTRRIH
```

TRTRPLE - GFP Tag - V

Restriction Sites: SgfI-MluI

Cloning Scheme:



ACCN: NM_015828

ORF Size: 2166 bp

OTI Disclaimer: The molecular sequence of this clone aligns with the gene accession number as a point of reference only. However, individual transcript sequences of the same gene can differ through naturally occurring variations (e.g. polymorphisms), each with its own valid existence. This clone is substantially in agreement with the reference, but a complete review of all prevailing variants is recommended prior to use. [More info](#)

OTI Annotation: This clone was engineered to express the complete ORF with an expression tag. Expression varies depending on the nature of the gene.

Components: The ORF clone is ion-exchange column purified and shipped in a 2D barcoded Matrix tube containing 10ug of transfection-ready, dried plasmid DNA (reconstitute with 100 ul of water).

Reconstitution Method:

1. Centrifuge at 5,000xg for 5min.
2. Carefully open the tube and add 100ul of sterile water to dissolve the DNA.
3. Close the tube and incubate for 10 minutes at room temperature.
4. Briefly vortex the tube and then do a quick spin (less than 5000xg) to concentrate the liquid at the bottom.
5. Store the suspended plasmid at -20°C. The DNA is stable for at least one year from date of shipping when stored at -20°C.

RefSeq: [NM_015828.2](#), [NP_056643.2](#)

RefSeq Size: 2654 bp

RefSeq ORF: 2262 bp

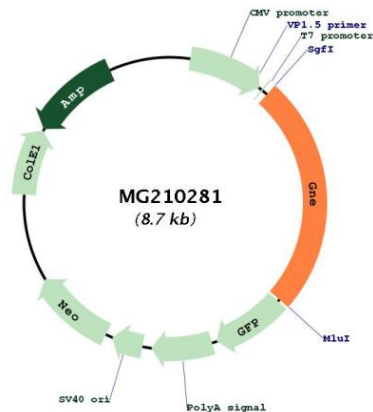
Locus ID: 50798

UniProt ID: [Q91WG8](#)

Cytogenetics: 4 B1

Gene Summary: Regulates and initiates biosynthesis of N-acetylneuraminic acid (NeuAc), a precursor of sialic acids. Required for normal sialylation in hematopoietic cells (By similarity). Sialylation is implicated in cell adhesion, signal transduction, tumorigenicity and metastatic behavior of malignant cells. Plays an essential role in early development.[UniProtKB/Swiss-Prot Function]

Product images:



Circular map for MG210281