

Product datasheet for **MG210274**

Rps6ka6 (BC054113) Mouse Tagged ORF Clone

Product data:

Product Type:	Expression Plasmids
Product Name:	Rps6ka6 (BC054113) Mouse Tagged ORF Clone
Tag:	TurboGFP
Symbol:	Rps6ka6
Synonyms:	2610524K04Rik; RSK4; S6K-alpha-6
Mammalian Cell Selection:	Neomycin
Vector:	pCMV6-AC-GFP (PS100010)
E. coli Selection:	Ampicillin (100 ug/mL)



[View online »](#)

ORF Nucleotide Sequence:

>MG210274 representing BC054113
 Red=Cloning site Blue=ORF Green=Tags(s)

TTTTGTAATACGACTCACTATAGGGCGGCCGGGAATTCGTCGACTGGATCCGGTACCGAGGAGATCTGCC
 GCC**CGGATCGCC**

ATGCTACCGTTCCGCCCTGTGGAGGATCCCTGGGACCAAGAAGACATGGAGGTGTTCCGCAGCACGAGCA
 GTAGCGAGCCACAGGTTGTGTTTACCATGAAGAACGCAGCAACGGTTATGCGGGAGCATGAACGCAAAGA
 GGTAAATGATCTGAAAATGGTTGATGAGCCAATGGAAGAGGGAGAGCCAGTTTCTTGCCGCGCGGAAGAA
 TTGGTTAAGGAGGTACCTATTACACAGCATGTTAAAGAAGGATACGAGAAAGCAGATCCCGCACAGTTTG
 ACTTGCTCAAGGTTCTTGGTCAGGGATCTTTGGAAAAGTTTTTCTTGTTAGAAAAGAACTGGTCTCGA
 TGCTGGGCAGCTCTATGCAATGAAGGTGTTAAGAAAAGCTTCTTTGAAAGTTCGAGACCGAGTTCGCACA
 AAGATGGAGAGGGATATCTTGGTGAAGTAAATCATCCCTTTATCGTCAAAGTGCATGCTTTTCAGA
 CTGAAGGGAAGCTGTACTTAATATTGGATTTCTCAGGGGAGGAGATGTCTTCACAAGATTATCCAAGA
 GGTCTTTTTACAGAGGAAGATGTGAAATCTACCTTGGGAATTGGCCCTGGCTTTGGATCATCTACAT
 CGATTAGGAATTTTATAGAGACCTGAAACCAGAAAACATCTTACTTGATGAAATAGGACATATCAAGT
 TAACAGATTTTGGGCTTAGCAAAGAGTCACTGGATCAAGAAAAGAAAGGCCTACTCATTTTGTGGTACTGT
 AGAATATATGGCCCTGAAGTAGTAAACAGACGAGCCATTCTCAGAGTCTGATTGGTGGTCATATGGT
 GTACTTATGTTTGAATGCTTACTGGCACTTTGCCATTTCAAGGGAAAGACAGAAATGAGACCATGAATA
 TGATACTGAAAGCAAACCTTGAATGCCCAATTCCTTAGTGCTGAAGCACAAGTCTATTAAGGATGTT
 ATTCAAAAGGAATCCAGCAAATAGATTGGGGTCAGAAGGAGTTGAAGAAGTCAAAGACATGCCTTTTTT
 GCTTCCATTGACTGGAATAAACTATATAAAGAGAAGTCCAGCCCTCTTTTCAGACCTGCTTCTGAAAAAC
 CGGATGATACCTTCTGTTTTGATCTGAAATTTACTGCCAAAACACCTAAAGATTCTCTGGTTTTGCCAGC
 CAGTGCAAACGCTCATCAACTCTCAAAGGATTCAGTTTTGTTGCGACTTCTATTGCCGAAGAATATAAA
 ATCACTCTGTTACAAGTCAAATGTATTACCAATCGTTCAGATAAATGGAAATGCTGCTCAATTTAGTG
 AAGCTTATGAATTGAAAGAGGATATTGGTATTGGTTCTTATTCTGTTTGAAGCGATGCATACACTCAGC
 TTCCAATGTGGAATTTGCAGTCAAGATCATTGATAAAAAAAGAGAGACCCCTCAGAAGAAATTGAAATT
 TTGATGCGCTATGGACAACATCCAACATTATCTTTAAAGGAGGTCTTTGATGATGGGAAATATGTTT
 ACCTTGTACGGACTTGATGAAAGGAGGAGAATCTGGATCGGATTCTCAAAAAGAAATGTTTCTCAGA
 GCAGGAAGCTAGTAATGTGCTGTATGTAATAACCAAGACAGTTGAATGCCTTCATTCTCAAGGAGTCGTT
 CATCGTGATCTTAAGCCAGTAATTTTTATATATGGATGAGTCAGCCCATCCAGATTCAATCAAGATCT
 GTGATTTTGGGTTTGAAAACAGCTTCGTGGAGAAAATGGACTTCTGTTAACTCCGTGCTACACCGCAAA
 CTTTGTAGCACCTGAGGTTCTCACTCAACAGGGATATGATGCTGCCTGTGATATTTGGAGCTTAGGAGTC
 CTTTTGTACAAATGTTGGCCGGCTACACTCCATTTTCCAACGGCCCAATGATACTCCTGAGGAAATAC
 TGCTGCGCATAGGCAACGGGAGGTTCTCTTTGAGTGGTGAATCTGGGACAATATTTACGTTGGAGCAAA
 GGAAGCAGTGGCAGCACCATATCTGTCTTGGCTCGGAACCCAAACAGGCATCATCCAATCCTGGAGCCT
 GTTACTGCTTACGTTTAGCTCAGAGGCGGAACATGAAAAGCGAACATCAACTGGCTTG

ACGCGTACGCGGCCGCTCGAG – GFP Tag – GTTTAA

Protein Sequence: >MG210274 representing BC054113
 Red=Cloning site Green=Tags(s)

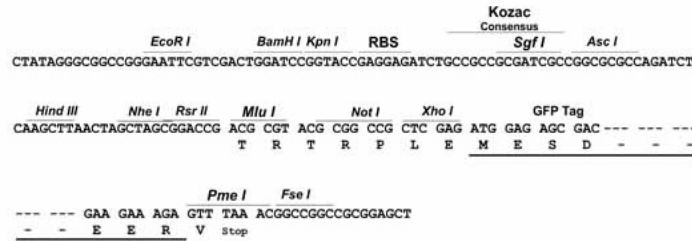
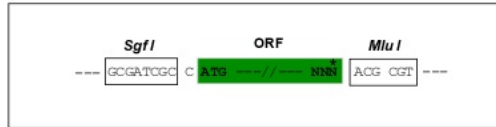
MLPFAPVEDPWDQEDMEVFGSTSSSEPQVVFTMKNAAATVMREHERKEVNDLKMVDEPMEEGEPVSCRREE
 LVKEVPIQHVKEGYEKADPAQFDLLKVLGQGSFGKVFLVRKKTGPDAGQLYAMKVLRKASLKVRDRVRT
 KMERDILVEVNHPFIVKLHYAFQTEGKLYLILDFLRGGDVFTRLSKEVLFTEEDVKFYLAELALALDHLH
 RLGIVYRDLKPENILLDEIGHIKLTDGFLSKESVDQEKAYSFCGTVEYMAPEVNVNRRRAHSQSADWWSYG
 VLMFEMLTGTLPFQGKDRNETMNMILKAKLGMPQFLSAEAQSLRLMLFKRNPANRLGSEGVEEVKRHAFF
 ASIDWNKLYKREVQPPFRPASGKPDFTFCDFPEFTAKTPKDSPLPASANAHLFKGFSFVATSI AEEYK
 ITPVTSSNVLPIVQINGNAAQFSEAYELKEDIGIGSYSVCKRCIHSASNVEFAVKIIDKNKRDPSSEEIEI
 LMRYGQHPNIIISLKEVFDGKYVYVLTDLMKGGELLDRILKKKCFSEQEASNVLVYITKVECLHSQGVV
 HRDLKPSNILYMDESAHPDSIKICDFGFAKQLRGENGLLLTPCYTANFVAPEVL TQQGYDAACDIWSLGV
 LLYTMLAGYTPFSNGPNDTPEEILLRIGNGRFSLSGGIWDNISRGAKEAVAAPYSLARNPNRHHPILEP
 VTASRLAQRNMKKRTSTGL

TRTRPLE - GFP Tag - V

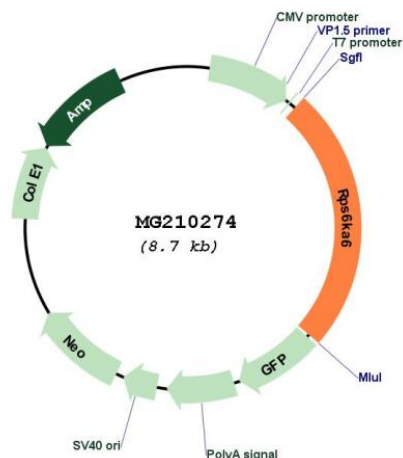
Restriction Sites: SgfI-MluI

Cloning Scheme:

Cloning sites used for ORF Shutting:



Plasmid Map:



ACCN: BC054113

ORF Size: 2160 bp

OTI Disclaimer: The molecular sequence of this clone aligns with the gene accession number as a point of reference only. However, individual transcript sequences of the same gene can differ through naturally occurring variations (e.g. polymorphisms), each with its own valid existence. This clone is substantially in agreement with the reference, but a complete review of all prevailing variants is recommended prior to use. [More info](#)

OTI Annotation: This clone was engineered to express the complete ORF with an expression tag. Expression varies depending on the nature of the gene.

Components: The ORF clone is ion-exchange column purified and shipped in a 2D barcoded Matrix tube containing 10ug of transfection-ready, dried plasmid DNA (reconstitute with 100 ul of water).

Reconstitution Method:

1. Centrifuge at 5,000xg for 5min.
2. Carefully open the tube and add 100ul of sterile water to dissolve the DNA.
3. Close the tube and incubate for 10 minutes at room temperature.
4. Briefly vortex the tube and then do a quick spin (less than 5000xg) to concentrate the liquid at the bottom.
5. Store the suspended plasmid at -20°C. The DNA is stable for at least one year from date of shipping when stored at -20°C.

RefSeq: [BC054113.1](#)

RefSeq Size: 3906 bp

RefSeq ORF: 2162 bp

Locus ID: 67071

Cytogenetics: X E1

Gene Summary: Constitutively active serine/threonine-protein kinase that exhibits growth-factor-independent kinase activity and that may participate in p53/TP53-dependent cell growth arrest signaling and play an inhibitory role during embryogenesis.[UniProtKB/Swiss-Prot Function]