

Product datasheet for **MG210244**

Lrrn1 (NM_008516) Mouse Tagged ORF Clone

Product data:

Product Type:	Expression Plasmids
Product Name:	Lrrn1 (NM_008516) Mouse Tagged ORF Clone
Tag:	TurboGFP
Symbol:	Lrrn1
Synonyms:	2810047E21Rik; NLRR-1
Mammalian Cell Selection:	Neomycin
Vector:	pCMV6-AC-GFP (PS100010)
E. coli Selection:	Ampicillin (100 ug/mL)



[View online »](#)

ORF Nucleotide Sequence:

>MG210244 representing NM_008516
 Red=Cloning site Blue=ORF Green=Tags(s)

TTTTGTAATACGACTCACTATAGGGCGGCCGGAATTCGTCGACTGGATCCGGTACCGAGGAGATCTGCC
 GCC**CGGATCGCC**

ATGGCCAGATTGAGCACTGGGAAAGCAGCTTGCCAGGTGGTGTGGGCTTGTGATAAATTCATTAAGT
 AATCTTCCATACTGACTAGTGAGTGTCCCCAGCTTTGTGTTTGTGAAATTCGTCCTTGGTTTACCCACA
 GTCACCTACAGAGAAGCCACCACCGTGGATTGTAATGACCTCCGCCAACCAGGATCCCTGGCAACCTC
 TCTAGTGACACACAAGTCTTCTTACAGAGCAATAACATCGCCAAGACCGTGGACGAGCTGCAGCAGC
 TCTTCACTTGACCGAGCTGGATTTCTCCAGAACAACTTACAAACATCAAAGAGGTAGGGCTGGCAAA
 CTTGACCCAGCTCACAACCCTGCATCTAGAGGAAAATCAGATTTAGAGATGACGGATTACTGTCTGCAA
 GACCTCAGCAACCTTCAAGAACTCTACATCAACCACAACCAGATCAGCACAATCTCTGCCAACGCCTTTT
 CTGGCTTGAAAAATCTCTTGAGGCTGCACCTGAATCCAATAAGTTGAAAGTGATCGATAGCCGCTGGTT
 TGATTCCACTCCCAACCTGGAAATCTCATGATTGGGGAAAACCTGTGATTGGAATCCTGGACATGAAC
 TTCAGACCTCTCTCAACCTGAGAAGCCTAGTGTTAGCAGGAATGTACCTCACTGATGTTCCCGGAAACG
 CCTTGGTAGGCTTGGATAGCCTCGAGAGCTGTCTTTCTATGACAACAAACTGATCAAAGTCCCTCAACT
 TGCCCTGCAAAAAGTTCCAAATTTGAAATTTTAGACCTCAATAAAAAATCCTATTCACAAAATCCAAGAA
 GGAGACTTTAAAAATATGCTTCGGTTAAAAGAAGTGGGAATCAACAACATGGGAGAGCTGGTTTCCGTGG
 ACCGCTATGCCCTGGATAAATTTGCCAGAATTGACAAAGCTCGAAGCAACCAATAACCCCAAACTGTCATA
 CATCCACCGTTTGGCTTCCGTAGTGTGCCGGCTCTAGAAAGCTTAATGTTGAACAACAATGCCTTGAAT
 GCCGTGTACAAAAAACAGTGAATCTCTTCCCAATCTGCGTGAGATCAGCATCCACAGCAACCCGCTGA
 GGTGTGACTGTGCATCCACTGGATCAACTCCAACAAAACCAACATTTCGTTTCATGGAGCCCTCTCCAT
 GTTCTGTGCCATGCCACCGGAATACAGGGGGCAGCAGGTGAAGGAGGTCCATAATCCAGGACTCAAGTGAG
 CAGTGCCTCCCGATGATATCGCACGATACATTCCTAATCATCTAAACATGGACATTGGTACAACACTTT
 TCCTAGACTGTCGGGCCATGGCTGAGCCAGAACCAGAGATTTACTGGGTCACTCCCATTTGAAAATAAGAT
 AACCGTGGAAACTCTTTCAGACAAATACAAGCTGAGTAGTGAGGGCACCTTGGAGATAGCAACATACAG
 ATTGAAGACTCAGGAAGGTACACCTGCGTTGCCAGAATGTCCAAGGAGCAGACTCGAGTGGCAACTA
 TCAAGGTTAATGGAACCTTCTAGATGGTGCACAGGTGCTGAAAATATATGTCAAACAGACAGAATCTCA
 TTCGATTTTAGTATCTTGAAAGTTAATCCAATGTCATGACATCGAACTGAAATGGTCACTCTGCCACT
 ATGAAGATCGACAACCCACATAACATACACAGCCAGGGTGCCAGTAGATGTTTCAATGAAATATAACCTAA
 CACATCTGCAGCCTTCTACGGATTATGAAGTGTGTCTCACGGTGTCCAACATCCATCAGCAGACTCAGAA
 GTCATGTGTCAATGTCACAACAAAACCGCTGCCTTCGCCCTGGACATCTCTGACCATGAAACCAGCACC
 GCCCTTGTGCGGTGATGGGGTCCATGTTTCCGCTCATCAGTCTAGCATCCATCGCTATTTACATCGCGA
 AAAGGTTTAAGAGGAAAAATTACCACCATTTCGCTGAAAAAGTATATGCAAAAACCTCGTCCATCCCACT
 GAACGAGCTGTACCCCACTCATTAACTCTGGGAAGCTGACAGTGACAAGGACAAGATGGCTCGGCA
 GACACCAAGCCAACCCAGGTTGACACATCCAGAAGCTATTACATGTGG

ACGCGTACGCGGCCGCTCGAG - GFP Tag - GTTTAA

Protein Sequence: >MG210244 representing NM_008516
 Red=Cloning site Green=Tags(s)

MARLSTGKAACQVVLGLLITSLTESSILTSECPQLCVCEIRPWFTPQSTYREATTVDCNDLRLTRIPGNL
 SSDTQVLLLQSNNAKTVDLQQLFNLTELDQSNNFTNIKEVGLANLTQLTTLHLEENQISEMTDYCLQ
 DLSNLQELYINHNQISTISANAFSGLKNLLRHLNSNKLKVIDSRWFDSTPNLEILMIGENPVIGILDMM
 FRPLSNLRSLVLAGMYLTDVPGNALVGLDSLESLSFYDNKLIKVPQLALQKVPNLKFLDLNKNPIHKIQE
 GDFKNMLRLKELGINNMGELVSVDRYALDNLPELTKLEATNPNKLSYIHRLAFRSVPALLESMLNANNALN
 AVYQKTVESLPNLRREISIHNSPLRCDCVIHWINSNKTNIRFMEPLSMFCAMPPEYRQQVKEVLIQDSSE
 QCLPMISHDTFPHNLMIDIGTTLFLDCRAMAEPEPEIYWVTPIGNKITVETLSDKYKLSSEGTLIANIQ
 IEDSGRYTCVAQNVQGADTRVATIKVNGTLLDGAQVLKIYVKQTESHSILVSWKVSNNVMTSNLKWSSAT
 MKIDNPHITYTARVPVDVHEYNLTHLQPSTDYEVCLTVSNIHQQTKSCVNVTTKTAALFDISDHETST
 ALAAMVMSMFAVISLASIAIYIAKRFRKKNYHSHLKKYMQKTSSIPLNELYPPLINLWEADSDKDKDGSA
 DTKPTQVDTSRSYMW

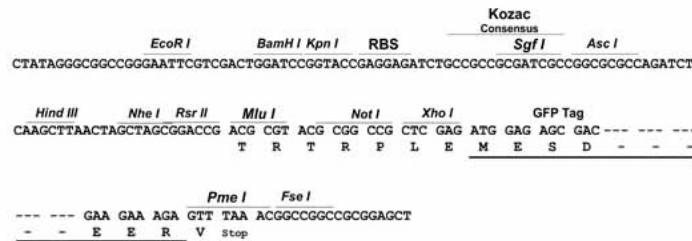
TRTRPLE - GFP Tag - V

Restriction Sites:

SgfI-MluI

Cloning Scheme:

Cloning sites used for ORF Shutting:



ACCN: NM_008516

ORF Size: 2148 bp

OTI Disclaimer: Due to the inherent nature of this plasmid, standard methods to replicate additional amounts of DNA in E. coli are highly likely to result in mutations and/or rearrangements. Therefore, OriGene does not guarantee the capability to replicate this plasmid DNA. Additional amounts of DNA can be purchased from OriGene with batch-specific, full-sequence verification at a reduced cost. Please contact our customer care team at custsupport@origene.com or by calling 301.340.3188 option 3 for pricing and delivery.

The molecular sequence of this clone aligns with the gene accession number as a point of reference only. However, individual transcript sequences of the same gene can differ through naturally occurring variations (e.g. polymorphisms), each with its own valid existence. This clone is substantially in agreement with the reference, but a complete review of all prevailing variants is recommended prior to use. [More info](#)

OTI Annotation: This clone was engineered to express the complete ORF with an expression tag. Expression varies depending on the nature of the gene.

Components: The ORF clone is ion-exchange column purified and shipped in a 2D barcoded Matrix tube containing 10ug of transfection-ready, dried plasmid DNA (reconstitute with 100 ul of water).

Reconstitution Method:

1. Centrifuge at 5,000xg for 5min.
2. Carefully open the tube and add 100ul of sterile water to dissolve the DNA.
3. Close the tube and incubate for 10 minutes at room temperature.
4. Briefly vortex the tube and then do a quick spin (less than 5000xg) to concentrate the liquid at the bottom.
5. Store the suspended plasmid at -20°C. The DNA is stable for at least one year from date of shipping when stored at -20°C.

RefSeq: [NM_008516.4](#), [NP_032542.1](#)

RefSeq Size: 3756 bp

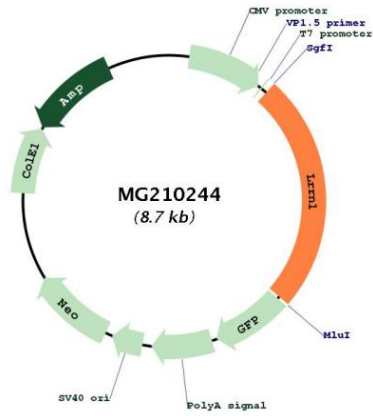
RefSeq ORF: 2151 bp

Locus ID: 16979

UniProt ID: [Q61809](#)

Cytogenetics: 6 E1

Product images:



Circular map for MG210244