

Product datasheet for **MG210237**

Ilf3 (BC047272) Mouse Tagged ORF Clone

Product data:

Product Type:	Expression Plasmids
Product Name:	Ilf3 (BC047272) Mouse Tagged ORF Clone
Tag:	TurboGFP
Symbol:	Ilf3
Synonyms:	MPHOSPH4, NF90
Mammalian Cell Selection:	Neomycin
Vector:	pCMV6-AC-GFP (PS100010)
E. coli Selection:	Ampicillin (100 ug/mL)



[View online »](#)

ORF Nucleotide Sequence:

>MG210237 representing BC047272
 Red=Cloning site Blue=ORF Green=Tags(s)

TTTTGTAATACGACTCACTATAGGGCGGCCGGAATTCGTCGACTGGATCCGGTACCGAGGAGATCTGCC
 GCC**CGCATCGCC**

ATGGCATTGTATCATCATCACTTTCATCACAAGAAGAAGAAGGCGTCCCATGAGAATTTTTGTGAATGACG
 ATCGCCACGTGATGGCAAAGCATTCTTCAGTGTACCCAACACAAGAGGAGCTGGAGGCTGTACAGAACAT
 GGTGTCCATACTGAGCGGGCCCTGAAGGCTGTCTCTGACTGGATTGATGAGCAGGAGAAAAGGCAACAGC
 GAGCTCTCTGAGGCAGAAAATATGGACACACCCCAAGACGATGAGAGCAAAGAAGGGGCTGGGGAACAGA
 AGGCGGAACACATGACTAGGACCCTGAGGGCGTGATGCGGGTCGGCCTGGTAGCCAAGGGTCTTCTGCT
 CAAGGGGGACTTGGATCTGGAGCTGGTTCTGCTCTGTAAGGAGAAGCCACAACCCGCTTCTGGACAAG
 GTGGCTGACAACCTGGCCATCCAGCTCACTACTGTAACAGAAGACAAGTATGAAATACTCCAGTCTGTGG
 ATGATGCTGCGATTGTGATAAAAAACACAAAAGAGCCCCCTTGTCTTGACCATCCATCTGACCTCCCC
 TGTTGTACAGAGAAGAAATGGAGAAAGTATTAGCTGGAGAAACGCTATCAGTCAACGATCCCCCGACGTT
 CTGGACAGGCAGAAATGCCTTGCTGCCTTGGCGTCCCTCCGACACGCCAAGTGGTTCCAGGCCAGAGCCA
 ATGGACTGAAGTCATGTGTCAATTGTCTATCCGTGTCTTAAGGGACTTGTGTACCCGAGTGCCACCTGGGG
 TCCCTCAGAGGATGGCCTCTGGAGCTGCTGTGTGAGAAGTCCATCGGCACTGCCAATAGGCCAATGGGT
 GCTGGTGAAGCCCTGCGGAGAGTGTGGAGTGCCTGGCATCCGGCATCGTAATGCCAGATGGTTCTGGCA
 TTTATGACCCCTTGTGAAAAAGAAGCCACTGATGCTATTGGGCATCTAGACAGACAGCAACGGGAAGATAT
 CACACAGAGTGGCAGCATGCTCTGCGGCTTGTGCCTTGGTCACTCCATAAAGTACTGGGAATGGAC
 CCCCTGCCTTCCAAAATGCCAAGAAACCAAGAACGAGAACCCGGTGGACTACACTGTTCAAATTCCTC
 CCAGCACCACTATGCTATCACACCCATGAAACGCCCTATGGAAGAGGATGGGGAGGAGAAGTCTCCAG
 CAAGAAGAAAAAGAAGATCCAGAAGAAAGAGGAGAAGGCTGATCCTCCTCAAGCTATGAATGCCCTGATG
 AGGTTAAATCAGCTGAAGCCAGGCTGCAGTACAAGCTGATCTCCAGACAGGCCCTGTTTCATGCTCCCA
 TCTTACCATGTCTGTGGAGGTAGATGGCAGTAACTTCGAGGCCTCGGGGCCATCTAAAAAGACTGCCAA
 GCTTCATGTAGCTGTGAAGGTGTTACAGGACATGGGCTTGCCAACAGGCGCTGAAGGCAGAGACTCCAGC
 AAGGGGAAGACTCCGCTGAGGAGTCAAGTGGGAAGCCAGCAATAGTGGCCCCACCCCTGTGGTGGAAAG
 CTGTCTCAACCCAGTCTGTCTTCCCTCAGATGCCACTACTGAGCAGGGACCGATTTTGACTAAGCA
 TGGCAAGAACCCTGTTATGGAGCTTAATGAGAAGAGACGTGGCCTCAAATATGAGCTCATTCTGAGACG
 GGGGGCAGCCACGACAAAAGTTTGTATGGAGGTTGAGGTGGACGGACAGAAGTTTCAAGGTGCTGGTT
 CAAACAAAAGGTGGCAAAGGCTTATGCTGCACCTTGCCGATTAGAAAACTTTTCCCTGATACCCCTCT
 TGCTCTTGAAGCCAACAAAAGAAAAGGACCCAGTACCTGTCCGAGGTGGACCCAAATTTGCTGCCAAG
 CCACACAACCCTGGTTTTGGCATGGGAGGACCCATGCATAATGAAGTGGCCACCTCCTAACATCCGAG
 GTCGGGGCGGAGGAGTAAACATCCGAGGGCGAGGACGGGGCGGAGGATTTGGTGGCGCAACCATGGAGG
 AGGCTACATGAATGCTGGTGTGGATATGGAAGCTATGGGTACAGCAGCAATTCGGCCACAGCAGGCTAC
 AGTGACTTTTTACAGACTGCTACGGCTATCATGATTTTGGGGCTTCC

ACGCGTACGCGGCCGCTCGAG – GFP Tag – GTTTAA

Protein Sequence: >MG210237 representing BC047272
 Red=Cloning site Green=Tags(s)

MALYHHHFITRRRRRPMRIFVNDDRHVMKHSVYPTQEELAVQNMVSHTERALKAVSDWIDEQEKGNS
 ELSEAENMDTPPDESKEGAGEQKAEHMTRTLRGVMRVGLVAKGLLLKGDLDLELVLLCKEKPTTALLDK
 VADNLAIQLTTVTEDKYEILQSVDDAAIVIKNTKEPPLSLTIHLTSPVVREEMEKVLAGE TLSVNDPPDV
 LDRQKCLAAALASLRHAKWFQARANGLKSCVIVIRVLRDLCTRVPWTWGPLRGWPLELLCEKSIGTANRPMG
 AGEALRRVLECLASGI VMPDGSIGIYDPCEKEATDAIGHLD RQQREDITQSAQHALLAAFGQLHKVLGMD
 PLPSKMPKPKNENPVDTYVQIIPPSTTYAITPMKRPMEEDGEEKSPSKKKKIQKKEEKADPPQAMNLM
 RLNQLKPLQYKLISQTGPVHAPIFTMSVEVDGSNF EASGPSKKTAKLHVAVKVLQDMGLPTGAEGRDSS
 KGEDSAEESDGKPAIVAPPPVVEAVSNPSSVFPSDATTEQGPILTKHGKNPVMELNEKRRGLKYELISET
 GGS HDKRFVMEVEVDGQKFQGAGSNKKVAKAYAALAALEKLPDTPLEANKKKRTPVPVVRGGPKFAAK
 PHNPGFGMGGPMHNEVPPPPNIRGRGRGNIRGRGRGRGGANHG GGYMNAGAGYGSYGYSSNSATAGY
 S DFF TDCYGYHDFGAS

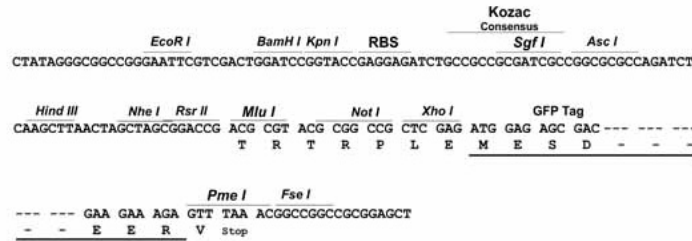
TRTRPLE - GFP Tag - V

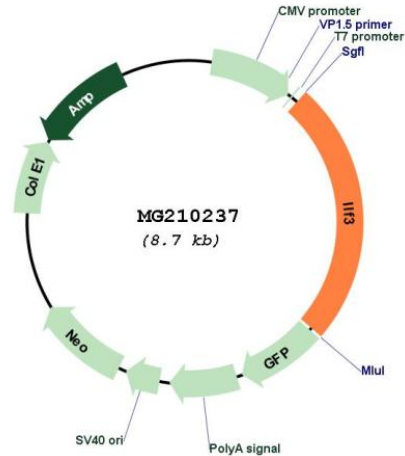
Restriction Sites:

SgfI-MluI

Cloning Scheme:

Cloning sites used for ORF Shuttling:



Plasmid Map:


ACCN: BC047272

ORF Size: 2150 bp

OTI Disclaimer: The molecular sequence of this clone aligns with the gene accession number as a point of reference only. However, individual transcript sequences of the same gene can differ through naturally occurring variations (e.g. polymorphisms), each with its own valid existence. This clone is substantially in agreement with the reference, but a complete review of all prevailing variants is recommended prior to use. [More info](#)

OTI Annotation: This clone was engineered to express the complete ORF with an expression tag. Expression varies depending on the nature of the gene.

Components: The ORF clone is ion-exchange column purified and shipped in a 2D barcoded Matrix tube containing 10ug of transfection-ready, dried plasmid DNA (reconstitute with 100 ul of water).

Reconstitution Method:

1. Centrifuge at 5,000xg for 5min.
2. Carefully open the tube and add 100ul of sterile water to dissolve the DNA.
3. Close the tube and incubate for 10 minutes at room temperature.
4. Briefly vortex the tube and then do a quick spin (less than 5000xg) to concentrate the liquid at the bottom.
5. Store the suspended plasmid at -20°C. The DNA is stable for at least one year from date of shipping when stored at -20°C.

RefSeq: [BC047272](#), [AAH47272](#)

RefSeq Size: 3705 bp

RefSeq ORF: 2150 bp

Locus ID:	16201
Cytogenetics:	9 7.78 cM
Gene Summary:	<p>The protein encoded by this gene contains two double-stranded RNA binding domains and functions in the post-transcriptional regulation of gene expression. It is a component of an RNA-protein complex that may be involved in mediating the export of messenger RNAs. Alternative splicing results in multiple transcript variants encoding distinct isoforms. These isoforms are grouped into two categories, NFAR-1 or NFAR-2, based on variation at the C-terminus. [provided by RefSeq, Mar 2013]</p>