

Product datasheet for **MG210235**

G2e3 (NM_001015099) Mouse Tagged ORF Clone

Product data:

Product Type:	Expression Plasmids
Product Name:	G2e3 (NM_001015099) Mouse Tagged ORF Clone
Tag:	TurboGFP
Symbol:	G2e3
Synonyms:	6030408C04Rik; 9030416F18; AW046379; D930034K21Rik; mKIAA1333
Mammalian Cell Selection:	Neomycin
Vector:	pCMV6-AC-GFP (PS100010)
E. coli Selection:	Ampicillin (100 ug/mL)



[View online »](#)

ORF Nucleotide
Sequence:

>MG210235 representing NM_001015099
Red=Cloning site Blue=ORF Green=Tags(s)

TTTTGTAATACGACTCACTATAGGGCGGCCGGAATTCGTCGACTGGATCCGGTACCGAGGAGATCTGCC
GCCCGCATCGCC

ATGAATGAAAATAAACCTGATAATTCACAAAGTCTTGCTTGTGTTTTCTGCCGAAAAATGATGACTGTC
CCAATAAATACGGAGAAAAGAAAACATATGAAAAATGGAATTTTGTGTCCTACTACTGCTTGTAAAT
GTCAAGTGGAAATTTGGCAGAGAGGTAAGAAGAAGAAGGAGTTTATGGCTTCTAATAGAAGACATCAGG
AAGGAAGTCCAGAGAGCCTCAAACCTGAAGTGTACAGTTTGAAGAAGAATGGTGCCTCAATTGGATGTG
TGGTACCCACGTGTAACGAAGTATCACTTGCCTTGTGGACTTCAGAAAAGAAATGATTTTCCAGTTCAC
TGACAATTTTGCCTCATTTTGTGGAACATCGACCCGTTCAAGCAATTACATCTAATAAATATAGTAGT
TCTTTACCATGTACTATCTGTTTGAATTTGTCGAGCCTATTCTACTTATAACATACTACAAAAGTCCCT
GTTGTAAGAATGCTTGGTTTCATAGAGACTGTTTACAGGTCCAAGCAATAAATGCAGGAGTGTTCCTT
TAGATGTACACTATGCAATAATACAGACATCTTTCAGAAGGAGATGTTGAGAATGGGAATTCATATTCCT
GAAAAAGATGCATCCTGGGAATTAAGAAGAAAACGCGTATCAAGAGCTGCTGCAGAGCCACGACCGCTGTG
ATATTCGAAGATGTCCTGCAAAAAAGGCCGAGACTACAACGAACCTAACAGCAATGGGAAGTAAAGCG
GTGTCAGAGTTGTGGTTCTAGTGGAACACACTTAGCCTGTTTCTCACTACAGTCTTGGGAACAAAATTGG
GAGTGTGGACTGTAGAAGAAATACCTACACTTCAGATTTCCAAAAGGCCCCCAACCCATTAGCCA
ACTCTACTAATGTGACAGTTACTGACTGCTTGTGGAAGAGTCATCATCTAAGCTCCCCAGACAGTCAAC
TGAGCCCAGCATAAAGAAGTACTGAGGCAAGGCAGCAAAATTTAGGAGAGACATTTCAACAATATTGATA
GAGTTAGGATTTCAAATTAAGAAAGAACTAAGACATTATACATCAACAAAGCCAATGTGTGGAGGAGTG
CCTTAGAGCAGTCCAGAGCCAGAAGTTAACCCTTCATGCTCCATTGACGTAGTGTATGTTAATGGCAA
TGAGGTTGGAAGCCAGCATCTTGGATCAAAGCAGGAATTTCTGAGTCACCTAATGCACCATCTTGAGAAT
TCATCAGTGTGTTGAAGGTCCTTGGCAAAGAACTTGTCTCTAAATTTCTCAAGCTGTGAAAGAGAATCTTT
ACTATGAAGTTGGCAAAATGCTTGCCATTTCTTTAGTTTATGGTGGTCTTCGCCTGGTTTCTTTTCTGA
AACCTTGTAACTGCCTTGCTTATGGACCAGAAAATACTCTACCAACTTTGGATGATGTATCAGACATT
GATGTTGCACAGATTATAATCAAGATAGATTCTGCAACTGATTTAAACATTTTAAATTCAGTAATAAGCC
AACACTATACTACTTAGAGGTCAGTGGATGTTTAAAGACTTACGACATCATTAAAGTATAAATTCATGTT
GGTAAAAGACATCTTTTCTACCATGTAATTAATAGAGTCAAGGCACCTTTTGAAGTTTTAAACAGGGT
CTGAAAACGCTTGGTGTGTTTGAAGAAAATCAAACCTACCCAGAAGCATTATTAAGATCCTATGTCATA
AACCTGAGAATCTCTCTGCAAAAAACCTCAGTGACCTTTCACAATTCCTCGGTAGCGGACGTACAGAC
TTTGAGGTTTTGGAACAGTTACTTAAAGGCTATAGAGGATGGTAAATCTGCAACAACGATGGAAGATATT
CTTATTTTTGCAACTGGCTGTAGTTCTGTCCCACCAACTGGATTTAAACCCTCTCTGTCAGTTGAATGTC
TACATGTGGATTTTCTGTTGCAGACAAATATAGAAACCATTTAGTTCTACCAGCCCAACGCGTATGA
AGAGTTCCAAGAAAAATAGGATTTACCATAAGAGACACTCTAAGATTAGAAAAGGAAGAAAGGTCTCAC
ATACTACCTCGGACATTAATGTTTCTTCTAATGAAGAAATGCTTATT

AGCGGACCGACGCGTACGCGGCCGCTCGAG - GFP Tag - GTTTAA

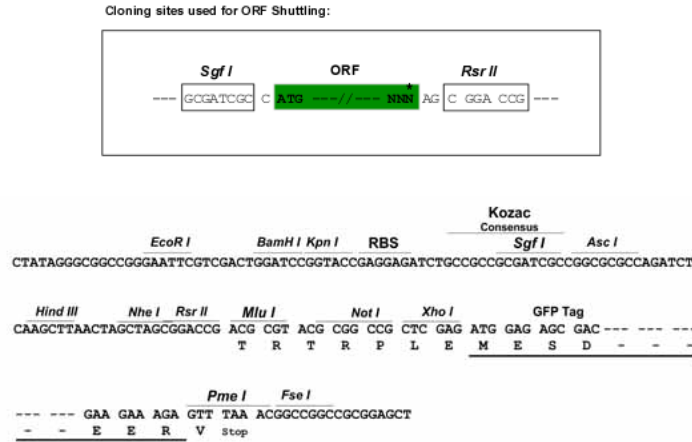
Protein Sequence: >MG210235 representing NM_001015099
 Red=Cloning site Green=Tags(s)

MNENKPDNSQSLACVFCRKNDPCPNKYGEKKTIEKWNFSVHYILLMSSGIWQRGKEEGVYGFLLIEDIR
 KEVQRASKLKCTVCKKNGASIGCVVPTCKRSYHLPCGLQKECIFQFTDNFASFCKWHRPVQAITSNKYSS
 SLPCTICLEFVEPIPTYNILQSPCKNAWFHRDCLQVQAINAGVFFRCTLNNTDIFQKEMLRMGIHIP
 EKDASWELEENAYQELLQSHDRCDIRRHCKKGRDYNPNKWEVKRCQSCGSSGTHLACSSLQSWEQNW
 ECLDCRRITYTSDFKAPKHPPLANSTNVTVDCLLEESSKLPQSTVAQHKELLRQGSKFRRDISTILI
 ELGFQIKKTKTLYINKANVWRSALQFQSQKFNPNCSIDVYVYVNGNEVGSQHLGSKQFELSHLMHLEN
 SSVFEGSLAKNLSLNSQAVKENLYEYVGMKLAISLVHGGPSPGFFSETLNFCLAYGPENTLPTLDDVSDI
 DVAQIIKIDSATDLNILNSVISQHYNYLEVSGCLRLTSLSDKFMLVKDILFYHVINRVKAPFESFKQG
 LKTLGVLEKIQTPEAFYKILCHKPENLSAKNLSDLFTIHSVADVQTLRFWNSYLKAIEDGKSATTMEDI
 LIFATGCCSVPPTGFKPSLSVECLHVDVFPVADKYRNHLVLPATNAYEEFQENMDFTIRDTLRLEKEERSH
 ILPRTLNVSSNEEMI

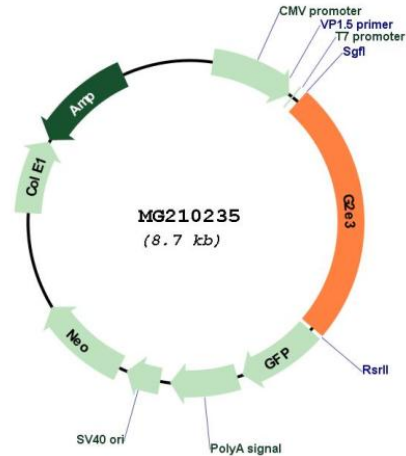
SGPTRRRLE - GFP Tag - V

Restriction Sites: SgfI-RsrII

Cloning Scheme:



Plasmid Map:



ACCN: NM_001015099

ORF Size: 2148 bp

OTI Disclaimer: The molecular sequence of this clone aligns with the gene accession number as a point of reference only. However, individual transcript sequences of the same gene can differ through naturally occurring variations (e.g. polymorphisms), each with its own valid existence. This clone is substantially in agreement with the reference, but a complete review of all prevailing variants is recommended prior to use. [More info](#)

OTI Annotation: This clone was engineered to express the complete ORF with an expression tag. Expression varies depending on the nature of the gene.

Components: The ORF clone is ion-exchange column purified and shipped in a 2D barcoded Matrix tube containing 10ug of transfection-ready, dried plasmid DNA (reconstitute with 100 ul of water).

Reconstitution Method:

1. Centrifuge at 5,000xg for 5min.
2. Carefully open the tube and add 100ul of sterile water to dissolve the DNA.
3. Close the tube and incubate for 10 minutes at room temperature.
4. Briefly vortex the tube and then do a quick spin (less than 5000xg) to concentrate the liquid at the bottom.
5. Store the suspended plasmid at -20°C. The DNA is stable for at least one year from date of shipping when stored at -20°C.

RefSeq: [NM_001015099.1](#), [NP_001015099.1](#)

RefSeq Size: 6634 bp

RefSeq ORF: 2151 bp

Locus ID: 217558

UniProt ID: [Q5R1Y2](#)

Cytogenetics: 12 B3

Gene Summary: E3 ubiquitin-protein ligase which accepts ubiquitin from an E2 ubiquitin-conjugating enzyme in the form of a thioester and then directly transfers the ubiquitin to targeted substrates (By similarity). Required for prevention of apoptotic death in early embryogenesis.
[UniProtKB/Swiss-Prot Function]