

Product datasheet for **MG210217**

Tagap (NM_145968) Mouse Tagged ORF Clone

Product data:

Product Type:	Expression Plasmids
Product Name:	Tagap (NM_145968) Mouse Tagged ORF Clone
Tag:	TurboGFP
Symbol:	Tagap
Synonyms:	2610315E15Rik
Mammalian Cell Selection:	Neomycin
Vector:	pCMV6-AC-GFP (PS100010)
E. coli Selection:	Ampicillin (100 ug/mL)



[View online »](#)

ORF Nucleotide
Sequence:

>MG210217 representing NM_145968
 Red=Cloning site Blue=ORF Green=Tags(s)

TTTTGTAATACGACTCACTATAGGGCGGCCGGAATTCGTCGACTGGATCCGGTACCGAGGAGATCTGCC
 GCCGCGATCGCC

ATGAAGCTGATAAGCAGTCTCGATGGTTCAAAAACACTTAATGCTAACACATGGAGACATTAATTGAAT
 GTCAGTCAGAGGGTGATATCAAAGTGCCTCCCCTGCTGACATCATGTGAGAGTGAAGACAGCATTTGCCA
 GCTAACTGAAATTAAGAAGAGAAAAGAAAGTGTCTGCTGGCCATCTCTCATGAGAAAGCTCTCTCCTTCA
 TCCGACTTCTCTGGGTCAATTGGAACAGAGCTGAAAGTGTGCTGTTTGACCAACCCCTTGTGATCATCT
 GTGGGGAGAACGACACACTTCCCAGACCCATCCAGGACATCCTCACCATCCTCTGCCTTAAAGGTCTTTC
 AACGGAAGGGATATTGAGAAAGCTGCCAGCGAGAAAGCCGCAAGGAGCTGAAGGAGGGGCTTAACTGT
 GGGGTCTCCGTGAATCTGAAGCAGCTCCCTGTGCACCTCCTAGCTGTGGTCTTCAAGGACTTCTCCGAG
 GGATACCCCTGAAGCTACTCTCCTGTGATCTCTTTGAGGACTGGATGGGCGCCCTGGAGAAGCCACCGA
 GGAGGACAGAATCGAGGCCCTGAAGCAGTTGCTGGTGGCTCCCCGGCCCAACCTTCTCTGCTCAGG
 CACTTGCTCTACGTGCTCCACCTCATCAGCAAGAACGCTGAGGTCAACAAGATGGACTCCAGCAACCTCG
 CCATCTGCATCGGGCCTAACATGCTCACTCTGAAGAACGACCAGAGCCTGTCTTCCAGGCCAGAAAGGA
 CCTGAACAATAAGGTTAAGATCTTGGTGAATTCTCATCGACAACCTGCTTTGAGATATTTGGGGAGAAC
 ATTCGGACGCGTTCCCGCATCACTTCTGACGACTCCCTGGAACACACTGACAGTTGAGAGCTGTCAACTC
 TGCAGAATGACTCGGCCATGACAGCAATGACCCAGATGTGGAGCCCACAAGTGGCGCAGCCTCTCCCAA
 CAGGCAACTGGAGGGTCCCCTCCACAATGGCTGGTCTGGATACCCGGGGCCACCGGACACCTGTGAG
 TCAAGCTCAGAGTCCAGCGTTAGCATGGTAGTACGGCTGAAAAGCTCCATTGTCCAACAAGACAGGCGGT
 TCTCTGAACCCAAACATGTCACCCACAGAGAGTGCCTCGTGGGCCCAACATCCAAGCAAAAAGCTAGCAAG
 GAGTGAGGACAGCTTCACTCTGTCCCAGGACGCCCTCCTGTTCTGAAGGCGATGAAGCTGAAGATCCCTTT
 ACAGAGGAAGTCTTCCCAGCAGTGGACAGCAAACCCAAGAGACCTGTGGATTTGAAAATAAAGAATTGGA
 CCCAAGGTTTAGCATCTCCACAGGGACACATAACCAAAGCTTTCTCCAGATCCTCCCCAGGCGAATCTTT
 GGGCAGCTCACCTGTGCCTTCTCCATCCTGCCCAAGAGAAACTTCTTACCAGACACCAGAGTTTACACA
 ACAAAGACAGACAAAACCAAACCCAGAGAGAAATTAGAAAGCACTCCATGTCGTTTTCTTTGCGTCTC
 ACAAGAAAGTGTGCCCCGAACCTCCAGCATTGGGTCTGAGAAATCCAAGACTTTTCTAGAGACCAACT
 CCAGAAGGACTTGAGGAAAGAGAGCCAACCTTCTGGCAGAATCGTCCAGGAAAATGAGTCAGAAATCCAA
 AGCCAAACATCTCTGGGCTTCTAGCTTGTCTGGCACCTGGGCCCTCTCAGTCGACAACACGTTCCAGTTAG
 TGGATATGAGGAAACCAGGAAGCCACCATCTTACGAAGAGGCCATTTATTACCAGACATCAGGACTCAC
 AGCCTACGGTGGCCAGACAGTTGGGAGTATGAGGTCAAGAATGTTCAAGCCAAGCACAGCAGTGCCCCCT
 GTGCCTTCTCACCATGGAGGTGACCTCAGTGAAGGGACACCTGGTGGACACAGATTGTCTTCTGTGACTG
 AGCACTGGACACACAGTCAGACTGTCCATGTCTCTATAGAAACTCAGGGGAGATCTGAGCTACACCAGTT
 GAGGACAGTGTCCGAGTCCATGCAGAAGGCTAAGCTGGACTGTCTTGGGCCACAACACAGCCACTTAGTC
 TTTGAGGCTGACCAACTGTCTGTGCTAGAGAATCCTACATT

AGCGGACCGACGCGTACGCGGCCGCTCGAG - GFP Tag - GTTTAA

Protein Sequence: >MG210217 representing NM_145968
 Red=Cloning site Green=Tags(s)

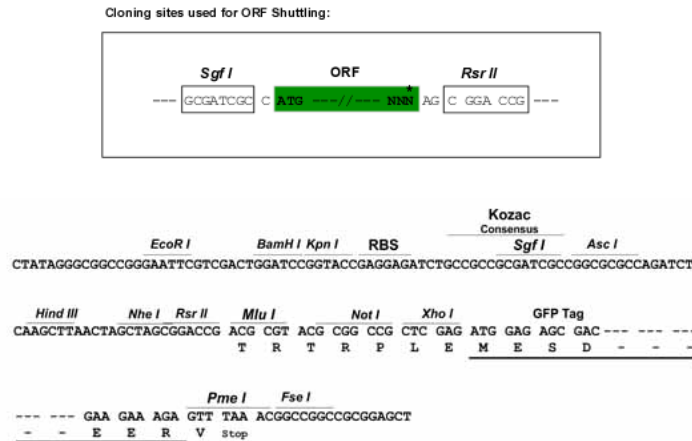
```

MKLISSLDGSKTLNANNMETLIECQSEGDIKVPPLLTSCSEDSICQLTEIKRKKVLSWPSPMRKLSPS
SDFSGSLEPELKVSLFDQPLSIIICGENDTLPRPIQDILTILCLKGPSTEGIFRKAASEKARKELKEGLNC
GVSYNLKQLPVHLLAVVFKDFLRGIPLKLLSCDLFEDWMGALEKPTTEEDRIEALKQVAGGLPRPNLLLLR
HLLYVLHLISKNAEVNKMDSNLAICIGPNMLTLKNDQSLSFQAQKDLNKNVKILVEFLIDNCFEIFGEN
IRTRSRI TSDDSLEHTDSSDVSTLQND SAYDSNDPDVEPTSGAASPNRQLEGPTPTMAGLDTRGQRTCE
SSSESSVSMVRLKSSIVQQRFFSEPNMSPSRECLVGPTSKQKLARSEDSTL SQDASCSEGDEAEDPF
TEEVFPAVDSKPKRPVDLKIKNWTQGLASPQGHITKAFSRSSPGESLSSPVSPSPCKRNFFTRHQST
TKTDKTKPQREIRKHSMSFSFASHKKVLPRTSSIGSEKSKDFSRDQLQKDLRKESQLSGRIVQENESEIQ
SQTSLGFSLSGTVALSVDNTFQLVDMRKPGSPSYEEAIYYQTSGLTAYGGQTVGSMRSMFKPSTAVPP
VPSHHGGDLSEGTPGGHRLSSVTEHWTHSQTVHVS IETQGRSELHQLRTVSESMQKAKLDCLGPQHSHLV
FEADQLCCARES YI
  
```

SGPTRRRLE - GFP Tag - V

Restriction Sites: SgfI-RsrII

Cloning Scheme:



ACCN: NM_145968

ORF Size: 2142 bp

OTI Disclaimer: The molecular sequence of this clone aligns with the gene accession number as a point of reference only. However, individual transcript sequences of the same gene can differ through naturally occurring variations (e.g. polymorphisms), each with its own valid existence. This clone is substantially in agreement with the reference, but a complete review of all prevailing variants is recommended prior to use. [More info](#)

OTI Annotation: This clone was engineered to express the complete ORF with an expression tag. Expression varies depending on the nature of the gene.

Components: The ORF clone is ion-exchange column purified and shipped in a 2D barcoded Matrix tube containing 10ug of transfection-ready, dried plasmid DNA (reconstitute with 100 ul of water).

Reconstitution Method:

1. Centrifuge at 5,000xg for 5min.
2. Carefully open the tube and add 100ul of sterile water to dissolve the DNA.
3. Close the tube and incubate for 10 minutes at room temperature.
4. Briefly vortex the tube and then do a quick spin (less than 5000xg) to concentrate the liquid at the bottom.
5. Store the suspended plasmid at -20°C. The DNA is stable for at least one year from date of shipping when stored at -20°C.

RefSeq: [NM_145968.2](#), [NP_666080.1](#)

RefSeq Size: 3076 bp

RefSeq ORF: 2145 bp

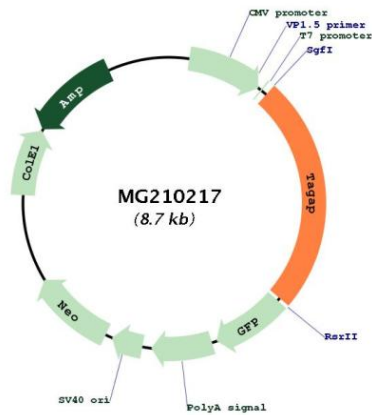
Locus ID: 72536

UniProt ID: [B2RWW0](#)

Cytogenetics: 17 A1

Gene Summary: May function as a GTPase-activating protein. May play a role in transmission ratio distortion (TRD) in mouse, in which heterozygous males for t-locus transmit their t-carrying chromosome to 95% or more of their offspring.[UniProtKB/Swiss-Prot Function]

Product images:



Circular map for MG210217